

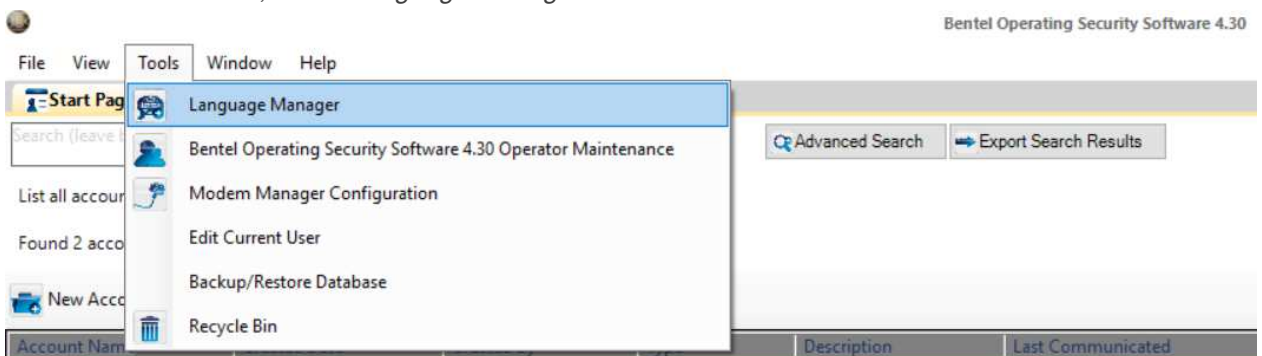
# BOSS

## DESCRIPTION

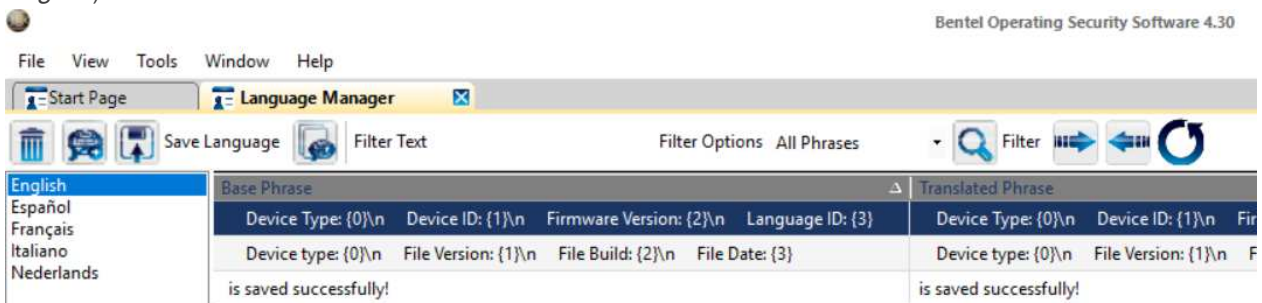
The language file provided with a new BOSS version adds or changes the strings related to that new software version.

## LANGUAGE FILE IMPORT

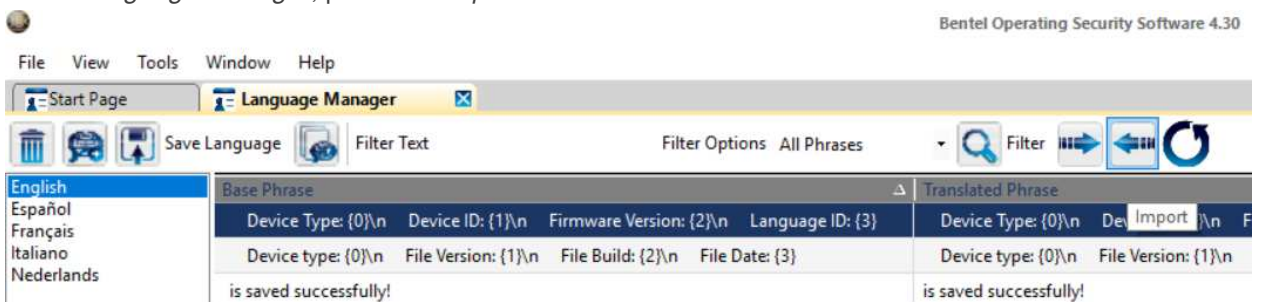
1. From the *Tools* Menu, select *Language Manager*



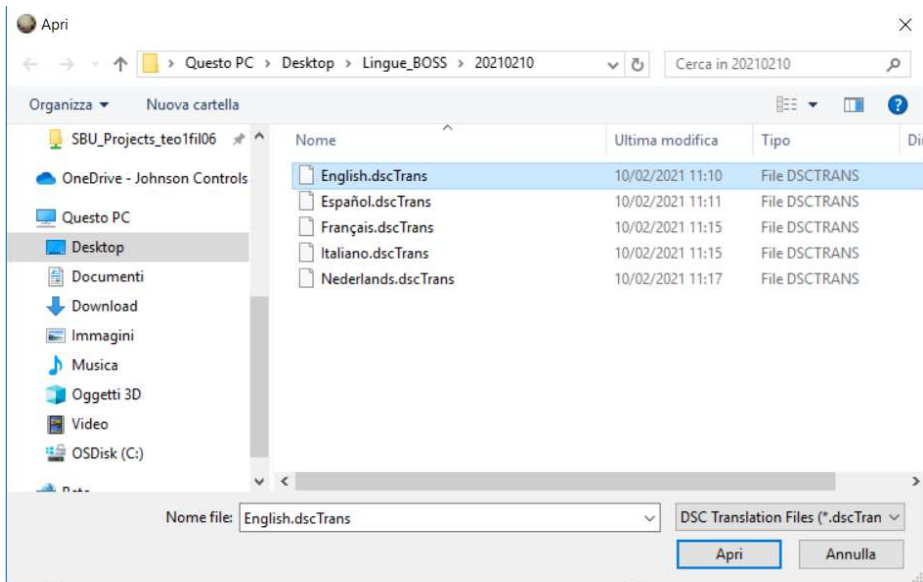
2. In the *Language Manager*, select the language of interest in the vertical bar on the left (for example *English*)



3. In the *Language Manager*, press the *Import* button



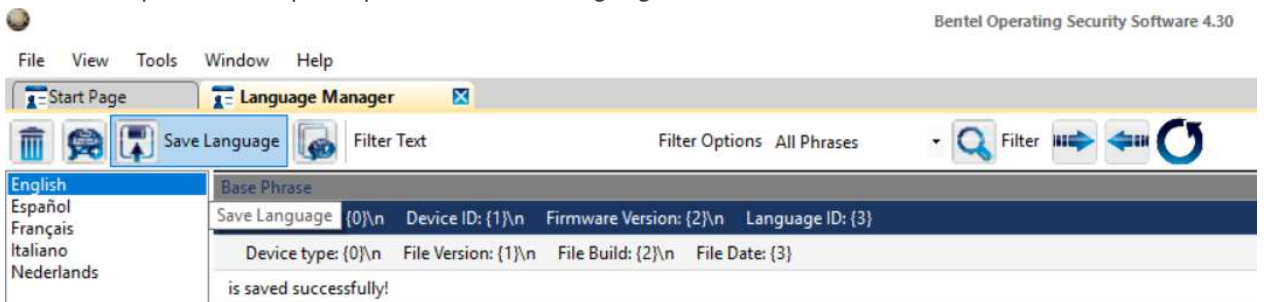
4. In the dialog box, select the file of interest (for example *English.dscTrans*) and press the *Apply/Open* button



5. Wait for the upload



6. When the upload is complete, press the *Save Language* button.



7. If necessary, continue with the other languages by carrying out steps 2. to 6.

8. When finished, proceed with restarting the BOSS.