

BOSS 4.40

VERSION HISTORY (> 3.0)

✓ 4.40 (2022-03-23)

New features:

- Multi Factor Authentication to access the following online services:
 - Help > Send Feedback
 - Help > Updates > Check for Updates

The selection of any online services on BOSS will prompt a window redirecting to the specific portal for first time registration. Then follow the shown indications.

If BOSS is only being used for uploading/downloading, then there is no change (the portal registration is not required). Local (PCLink) as well as Remote connections (Cellular and IP) are all possible without registration.

- Driver Pack integration for Absoluta Plus 4.10 and BGS-210 / BGS-220 / B3G-220 / BLE320 v3.0.

✓ 4.30 (2020-07-09)

New features:

- Support for panels ABSOLUTA PLUS 18-48-128.
- Support for BLE320 communicator.

Bugfixes and minor changes:

- Minor bugs fixing.

✓ 4.20 (2017-11-24)

New features:

- Support for BGS220 / B3G220 ver. 1.20 communicators, with new User Interface for CID/SIA Conversion programming.

Bugfixes and minor changes:

- Minor bugs fixing.

✓ 4.10 (2017-09-08)

New features:

- Support for BGS220 / B3G220 ver. 1.10 communicators.

- Support for Absoluta 104/42/16 G2/G3 ver. 3.60

Bugfixes and minor changes:

- Added panel Serial Number (UID) option in System Options – General – System page
- Minor bugs fixing.

✓ **4.01** (2016-06-22)

Bugfixes and minor changes:

- Minor bugs fixing.

✓ **4.00** (2016-04-06)

New features:

- Support for BGS220 / B3G220 communicators.

Bugfixes and minor changes:

- Minor bugs fixing.

✓ **3.50 Grade 3** (2014-06-19)

New features:

- Support for Absoluta 3.5 Grade 3 panels.

Bugfixes and minor changes:

- Minor bugs fixing.

✓ **3.50** (2014-03-24)

New features:

- Support for Absoluta 3.5 - *added the new pages for programming Smart SMS, E-Mail and mobile Push notifications, IP configuration;*
- Simplified Event/Action matrix - *rationalization of the Event/Action matrix grouping action and removing not used events;*
- Wizard for monitoring station programming - *new «Wizard» for an easy programming of all the parameters for a fast configuration of monitoring reporting.*
- Automatic Data Backup – *added to manual data backup, there is the possibility to schedule automatic backups.*

✓ **3.0.2** (2013-09-30)

Bugfixes and minor changes:

- Version 3.0.2 fixes a bug related to GPRS remote connection.

✓ **3.0.1** (2013-09-11)

New features:

- The BOSS software has been updated to the new 3.0.1 version in order to support the new ABSOLUTA 3.0 firmware.

PREREQUISITES

Before installing BOSS 4.40, make sure that following software is installed on your PC, otherwise download and install it following the order shown below.

All mandatory updates about these prerequisites must be installed by means of Windows Update.

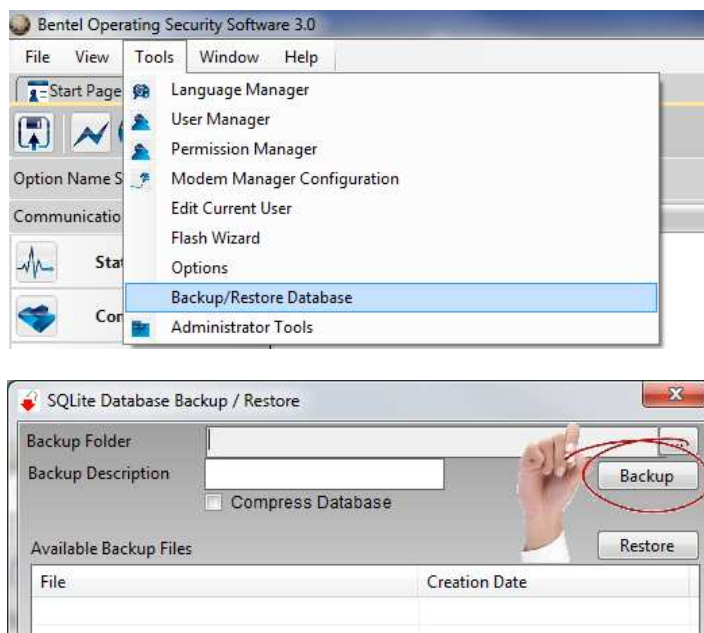
- 1) [Microsoft .NET Framework v4](#)
- 2) [Microsoft Visual C++ 2008 Runtime \(x86\)](#)

SETUP

1. Make sure that all prerequisites are met.
2. If you are doing an upgrade from a previous version of BOSS, you should make a backup of the users' database, to keep a copy of your data in case the upgrade does not end successfully and you need to reinstall a previous BOSS version.

Please note that the backup file is valid only for the same version which it was made from (i.e.: 3.0.2 backup for 3.0.2 BOSS), it is not valid as a way of exporting/importing data between different BOSS versions (i.e.: 3.0.2 backup is not valid for 4.30 BOSS).

You can make the backup by means of the provided tool:



3. Download **DLSIV-NSIS-BNTL.exe** from <http://www.bentelsecurity.com/index.php?n=library>
4. Proceed with setup following the shown steps.
5. When setup ends, BOSS will show the LOGIN form:



Default values:

Login = Admin
Password = 1234