

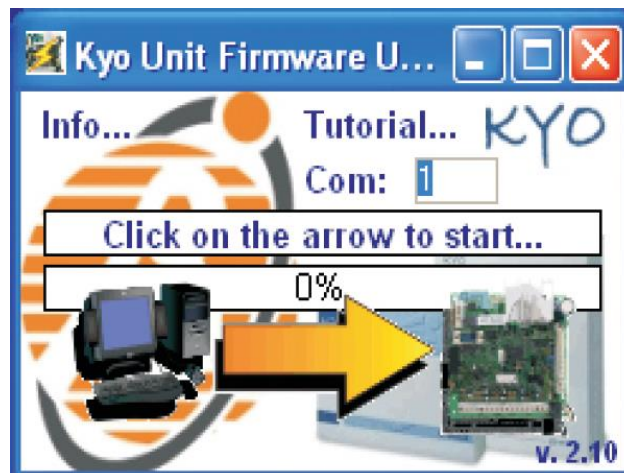
## KYO Unit Firmware Upgrade

Upgrading to Vers. 2.13 and 1.10 is necessary only for control panels with wireless management through the new VECTOR VRX32-433 and VRX32-868 wireless receivers.

To proceed with the upgrading you will need a special application software available from the password protected area of the Bentel Security website.

Please use the following steps to download and run the software:

- 1 - Go to [www.bentelsecurity.com](http://www.bentelsecurity.com)
- 2 - Click on "Technical Library" and then on "OTHER SOFTWARE"
- 3 - There you will find the link "**KYO Unit Firmware Upgrade**"
- 4 - Click to download and save the *KYOFirmware\_en.zip* file and extract the *RFH\_kyo32\_213\_Eng.exe* application on your PC
- 5 - Connect the serial port of your PC to the DB9 connector on the board that has to be upgraded
- 6 - Run the application and select the **Com** port you want to use to upgrade the panel, as shown below:



- 7 - The application is provided with a tutorial that will guide you through the upgrade step by step.

When updating panel firmware it is recommended to use a direct serial port communication. When used in conjunction with laptop computers, some models of USB to RS232 adapters increase the length of the serial timeouts. This can lead to a communication failure that corrupts the firmware upgrade. Corrupted panels cannot be restored and will need to be repaired.