



CAN'T SEE IT?  
CAN'T STEAL IT!



CAN'T SEE IT?  
CAN'T STEAL IT!

# CONTENTS

## THE COMPANY AND THE CONCEPT

About Security Smoke	4
About Concept Smoke Screen	5

## OUR PRODUCTS

The E-Series	6-7
The Rapid Install	8-9
The Rapid Deploy	10-11
Ancillary Products - Xenon Flash and The Sound Barrier	12

## CASE STUDIES

Boots - Large Retail Premises	13
Tesco Express - Small Retail Premises	14
Aurum Holdings - Window Protection	15
Expansys - Large Warehouse Environment	16
Aria Foods - Office and IT Environments	17

## AND FINALLY

Frequently Asked Questions	18
The Tech Spec	19

# THE CONCEPT

## Q. WHY USE SECURITY SMOKE PROTECTION?

### A1. IT ACTUALLY WORKS.....WHERE OTHER SOLUTIONS FAIL

Our security smoke systems are designed and installed to provide the ultimate tool in intruder deterrent and subsequent loss prevention. Consider the alternatives:

- Physical security such as shutters and grilles is unsightly and really only raises the level of violence employed to gain access to your premises. If the thieves want to get in, they will!
- CCTV is no longer a deterrent to professional burglars. They simply mask their features. Even monitored CCTV is ignored. The criminals plan to be gone before a response can be raised.
- Conventional alarm systems are simply ignored. The reason is the same as with CCTV. The intruders are gone in 3 minutes on average. That is a challenge for anyone to react to.

### A2. IT STILL ACTUALLY WORKS

Smoke Screen reacts and defends in seconds and moreover has been proven successful time and time again, preventing literally hundreds of millions of pounds of property from being stolen.

The introduction of Smoke Screen to an area is both violent and confrontational - exactly what a burglar does not want. In his mind, the time he has to complete his task is deteriorating rapidly, and more importantly, he can no longer see what he came to steal.

CAN'T SEE IT?  
CAN'T STEAL IT!

# ABOUT US

## SO WHO ARE WE? AND WHAT ARE WE ALL ABOUT?

### PEDIGREE AND INNOVATION

Concept Smoke Screen have a deserved reputation as the **best security smoke manufacturer** in the world. Our history can be traced back over 40 years when we designed, manufactured and installed the first ever Smoke Screen system. This was to protect gold bullion in specialised vaults.

Since then our techniques and processes have evolved to produce the best possible simulant machines available - ANYWHERE. On the way, we have garnered multiple international security awards and the most relevant accreditations on the marketplace.

### BEYOND PROTECTION

Aside from security, we get involved in some of the most technically demanding applications of simulant smoke. To find out about our work with the Fire Brigade, the Royal Air Force, the US Navy and an Atomic Weapons Establishment, to name a few, visit our manufacturing website: [www.conceptsmoke.com](http://www.conceptsmoke.com)

### PIONEERING NEW TECHNIQUES

Concept Smoke Screen have pioneered unique and unsurpassed techniques such as ducted smoke systems, OEM installations (for instance building smoke generators into cigarette gantries) and stand alone systems. Our products complement both the most advanced alarm system and security installations worldwide as well as less complex, entry level systems.

If you want the best, our engineering excellence is second to none.



### NO RESIDUE GUARANTEE

We are the **ONLY** company that provides an independently qualified no residue guarantee.

- Independently verified by Europe's most revered test houses.
- We have over 40 years of claim free history - not one case of contamination.
- Verified as safe by toxicology companies worldwide.
- The smoke is in the safest possible band for human breathing.
- The smoke disperses extremely slowly - 9mm/hour - **THE MOST PERSISTENT ON THE MARKET.**
- The smoke categorically will not leave contamination or damage your property.

# THE E-SERIES

THE WORLD'S LEADING SMOKE SCREEN SYSTEM



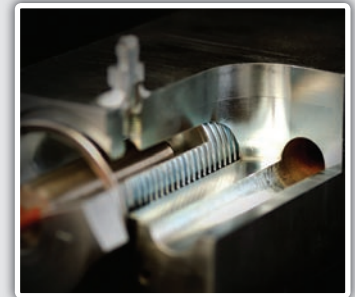
## DIGITAL INTERFACE

The E-Series is the most flexible range, offering control over all parameters. The generator can be tailored to exacting requirements.



## RUGGED DESIGN

Constructed to defence standards, the E-Series is built to last, and protect.



## PRECISION ENGINEERING

The safest, driest smoke on the market is achieved with our precision engineered heater block. Covered by a LIFETIME warranty.

# UNBEATABLE

**MORE SECURITY SMOKE OVER A LONGER PERIOD THAN ANY OTHER SYSTEM**

The EVOLUTION series of Smoke Screen generators is exactly what the name suggests – Darwin’s principles proven. This range of generators represents the pinnacle of our engineering excellence and experience.

Every aspect of what a Smoke Screen generator is intended to do has been thought out, and the current range is the end result of 40 years of continuous application development.

There is even a very good reason for the shape of the generators. The E-Series is exactly the right shape to be passed through a ceiling grid and mounted above a false ceiling. Our own installations have taught us that this is the optimal location for a Smoke Screen generator, both in terms of protecting the point of smoke production, and in terms of the best way of introducing the smoke itself – vertically down.

The range has advanced signalling capability, full fault awareness and the most flexible approach to installation options. The E-Series is in service, protecting property, with all manner of customers from home owners to large chains of retail stores.



## **NO RESIDUE GUARANTEE**

The E-Series produces the driest, safest smoke on the market and is guaranteed to leave no residue.



## **WANT THE TECH SPEC?**

We are not going to bore you with the tech spec here. Turn to the back page.

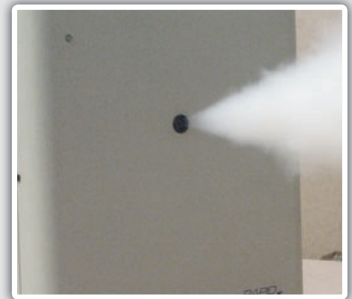
# RAPID SMOKE

OUR ENTRY LEVEL SYSTEMS



## OVERT OR COVERT

As with all Concept generators, the units are designed to be installed in almost any attitude.



## SIZE ISN'T EVERYTHING

Even the entry level model, pictured, is capable of impressive smoke production.



## WHEN POWER IS KEY

The Rapid HP fits the bill for larger environments and offers the optimal balance between performance and economy.

# COST EFFECTIVE SMOKE SCREEN PROTECTION

## IDEAL FOR THE SMALL RETAIL PREMISES

Traditionally, security smoke has been an expensive solution and this has limited its use to high value applications.

This has changed with the Rapid Install range.

Built to the same exacting standards as the E-Series generators, but employing different heater block technology, the Rapid Entry Level Model (ELM) and High Powered (HP), offer superb performance without breaking the budget.

Homes and smaller businesses can now easily benefit from the ultimate form of property protection.

Can't see it? Can't steal it!



### CASE STUDY - SMALL RETAIL

Check out Page 14 to see how the Rapid Install helped Tesco.



### WANT THE TECH SPEC?

We are not going to bore you with the tech spec here. Turn to the back page.

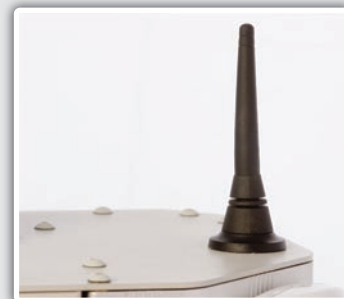
# RAPID DEPLOY

THE PORTABLE SECURITY GUARD



## KEY FOB ACTIVATED

Allows for simple arming and disarming of the unit. Range of up to 200m.



## GSM/SMS OPTION

Optional upgrade allows you the facility to receive text alerts to your mobile.



## STAND ALONE

Completely independent of any alarm system, the Deploy is easy to set up and ready to go straight out of the box.

# SECURITY DOESN'T HAVE TO BE STATIC

## THE RAPID DEPLOY CAN BE SET UP ALMOST ANYWHERE

Driven by demand from the Police for a portable security smoke solution, the Rapid Deploy is a patented design unique to Concept Smoke Screen. Set up and protection is a matter of minutes. **The Rapid Deploy is available for hire or purchase to protect the most immediate of risks.**

Each unit carries advanced Dual Tech detection and is capable of enrolling any number of radio key fobs for keyholders to arm and disarm.

A robust, wheeled flight case is available for ease of transport.

Capable of completely independent operation, the product also offers GSM/SMS signalling of all functions (including activation) to make the Rapid Deploy truly stand alone.



### CASE STUDY - BOOTS

The Deploy is used extensively by Boots the Chemist. Turn to page 13 for more.

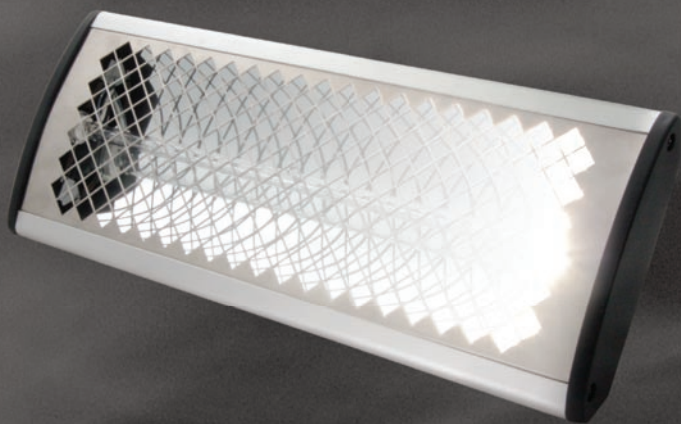


### WANT THE TECH SPEC?

We are not going to bore you with the tech spec here. Turn to the back page.

## XENON FLASH

### DISORIENTATION STROBE LIGHT



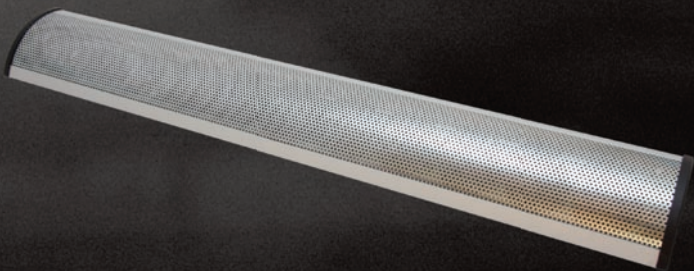
The XFP line of products further complement the Smoke Screen range. By producing an intense light effect, the screening properties of any security smoke is magnified immensely.

Imagine driving into thick fog and then turning your vehicle's full beam on and you will get a small idea of the effect.

The unit itself, is small, robust and designed with style in mind. Using this line of products means that lower volumes of smoke (and hence smaller, cheaper smoke generators) can be employed to incredible effect.

## SMOKE SCREEN SOUND BARRIER (S<sup>3</sup>B)

### UNBEARABLE FREQUENCIES, DESIGNED TO DETER



The Smoke Screen Sound Barrier range provides an incredible complement to the security smoke generators. Upon activation an intolerable wall of sound is created forcing any intruder to leave the area.

As with our entire range of security systems, the effect produced is perfectly safe. Additionally, the design of the S3B allows it to be unobtrusively installed in even the most contemporary of environments.



# CASE STUDY 1

## BOOTS CHEMISTS - THE LARGE RETAIL PREMISES

### PROBLEM

Boots is one of the best known names on British high streets. In recent years, there has been a move to retail parks situated on the edge of towns. As a result, thieves have targeted the stores seeking to steal well known brands of perfume and cosmetics.

### OPTIONS

Stores have been fitted with 'conventional' security: CCTV, monitored alarms and physical security such as shutters and grilles. These have failed to stop the increasing losses to burglary.

### SOLUTION

We immediately hired out our Rapid Deploy generators (see page 10) to instantly protect the premises until the final installation of a fully integrated E-Series solution.

This series of images graphically illustrates the effectiveness of Smoke Screen. The scene is not staged – these are real thieves and their reaction to the sudden appearance of smoke is genuine.



"The move to edge-of-town sites caused us problems. Break-ins increased by 10% and nothing we did seemed to have any significant effect. We tried Smoke Screen in a number of priority stores – those suffering repeated break-ins. The effect was dramatic.

We now have Smoke Screen in over 200 stores and we have seen burglary losses drop by 70%. Would I recommend Smoke Screen? Absolutely, it works!"

**Property Manager**  
**Mike Green**



# CASE STUDY 2

## TESCO EXPRESS - THE SMALL RETAIL PREMISES



“Our stores were fitted with monitored alarms, shutters and CCTV. We tried everything and nothing stopped the losses. Then we fitted Smoke Screen. The losses stopped!”

Tesco Security Director  
Mike Gough

### PROBLEM

Most break-ins are over in less than four minutes. A good Police response takes at least ten. Tesco's losses were substantial: fast acting thieves were stealing from petrol filling stations and Express stores with impunity.

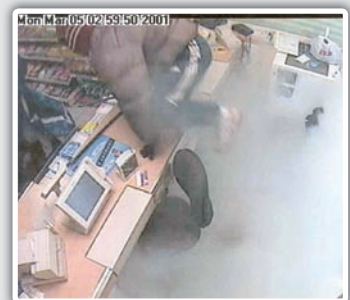
### OPTIONS

All conventional types of security had been tried. None were successful in stopping the losses. A monitored alarm, roller shutter door, CCTV – nothing prevents the thieves, intent on stealing cigarettes from behind the counter, from breaking and entering.

### SOLUTION

A single Smoke Screen installed where they needed protection the most: the cigarette counter. These images are taken from genuine CCTV footage captured in a Tesco petrol filling station in Manchester, England.

When the Smoke Screen is activated the burglary is finished (literally) in a few seconds. Little wonder that Tesco went on to install Smoke Screen into over 1,000 sites throughout the country.





# CASE STUDY 3

## AURUM HOLDINGS - WINDOW PROTECTION

### PROBLEM

Aurum is the largest luxury and prestige chain of jewellers in the UK which now includes the Watches of Switzerland, Mappin & Webb and Goldsmiths brands. They have experienced an increase in opening hours robberies leading to intolerable losses and interruption to trading across stores.

### OPTIONS

All other methods of security have failed to stop this – window grilles and roller shutters aren't designed for use during the day, disguise renders CCTV useless and manned guards aren't cost effective.

### SOLUTION

We installed a system triggered by existing panic buttons and wireless fobs. The introduction of a non-violent and confrontational Smoke Screen serves to startle the burglar, reduce the time to complete his task and quickly shroud the goods from sight. A cost-effective and proven solution to prevent daytime raids.

"After installing Smoke Screen in our branches we have had attempted raids and witnessed dramatic results. Concept Smoke Screen have revolutionised our approach to daytime raids and the results have been phenomenal."

**Ash Harvey**  
Property Development



**GOLDSMITHS**  
SINCE 1778





# CASE STUDY 4

## EXPANSYS – LARGE WAREHOUSE ENVIRONMENT



“The original fluid used was T00 persistent. The smoke lasted for over 4 hours.

A revised fluid brought the level of persistency down to an hour - in other words, the ideal.”

Expansys Security Manager

### PROBLEM

Expansys are Europe’s largest online retailer of PDAs and accessories. One of their warehouses became a target for persistent through the wall break-ins. Each break-in resulted in an approximate loss of stock in excess of £80,000. The ‘risk’ area is absolutely enormous and measures some 100m x 100m x 15m.

### OPTIONS

The site had tried upgrading to monitored CCTV with audio challenge, manned guarding and concrete barriers at likely points of entry. Things did not improve.

### SOLUTION

A point protection Smoke Screen system was offered where the highest risk stock would be covered as a cost-effective measure. This was declined and instructions were issued to “fill the entire warehouse within 1 minute”.

23 x E+ 900 Smoke Screen generators, complemented with 10 x S3B Sounders and 4 x 15kW XFP Strobes, were installed. The Smoke Screen generators were modified to provide the capacity to continue producing smoke for 30 minutes. This meant 6 hours of zero visibility in real terms.

**There has never been another break-in, attempted or otherwise.**



0:04

4 seconds into the activation and the initial area surrounding the risk is barricaded.



0:30

30 seconds and the ground level is already completely obscured, and the smoke is over 10 metres high.



0:45

15 seconds later and the whole warehouse is shrouded in smoke - total protection.



# CASE STUDY 5

## ARLA FOODS - THE OFFICE & IT ENVIRONMENT

### PROBLEM

A modern, two-storey office block located at the junction of two major motorways, crammed full of expensive computers and sensitive data.

### OPTIONS

Physical security to supplement the existing alarm system. Whilst this would have a deterrent effect, the appearance of the building would be affected, turning it into a virtual prison.

### SOLUTION

Instead of relying on a defence that, once penetrated, would leave the contents of the building completely vulnerable, the premise managers turned to Concept Smoke Screen.

Within instants of a confirmed break-in, 20 Smoke Screen generators lay down an impenetrable barrier of security smoke, completely masking the property and preventing loss.



ARLA FOODS

**Twenty Smoke Screen units have been installed, protecting offices, computers and server rooms.**

**Smoke Screen has been installed for over six years.**

**In that time, Arla Foods has not suffered a single loss at this site.**

# FAQs

## Q. WILL THE SMOKE DAMAGE MY PROPERTY?

A. If the Smoke Screen is installed and operated to the manufacturer's specifications then there is no possibility of damage or contamination - we guarantee this. Systems have been used to provide protection to a wide variety of sensitive property including high value clothing, consumer electronics and communication equipment.

## Q. WILL THE SMOKE DAMAGE COMPUTERS?

A. Smoke Screen units are used extensively to protect computer equipment. The dry nature of the smoke ensures that no deposition occurs on computer equipment. In addition, the liquid itself is non-conductive and non-corrosive. Tests have been conducted by ourselves and a major international electronics manufacturer, which show that LCD modules and PCBs with surface mounted ICs are unaffected even when the pure smoke fluid is literally poured over them.

## Q. WHAT DO THE INSURERS SAY?

A. Insurers throughout the UK now recommend and specify Smoke Screen. A number are also offering financial inducements to install. These include cash-back or premium reductions.

## Q. WHAT ABOUT THE POLICE AND FIRE BRIGADE?

A. In general the Police see the use of Smoke Screen as a positive move against intrusive criminals. Many Crime Prevention Officers throughout the country are happy to recommend the system. The new ACPO guidelines make provision for the use of a security smoke generating system. Fire Brigade personnel appreciate the need for such systems and have stated that, as long as systems are installed as per the code of practice, then they have no objection.



# E-SERIES



## FEATURES

- Competitive pricing
- Easy installation
- Simple integration into existing alarm systems
- Compact, rugged steel casing
- Guaranteed 'No Residue'
- Intelligent consumable monitoring
- Wall or ceiling mount
- British and European standard compliant
- £10 million product & public liability insurance
- Full range of models producing up to 1500m<sup>3</sup> smoke per minute

## OPERATION

- Inputs to accommodate 'Set', 'Trigger' & 'Hold-off'
- Simple smoke control

## CONSTRUCTION

- Unique machined steel heater block
- FIREROD® cartridge heaters

## DATA

- 30(H) x 27(D) x 32(W) cm
- Weight 14 - 20 kg
- 230-volt, 2.8 kW
- 0.2 MMD particle

# TECH SPECS

## RAPID INSTALL



### FEATURES

- Very competitive pricing
- Easy installation
- Simple integration into existing alarm systems
- Compact, rugged casing
- Wall or ceiling mount
- British and European standard compliant
- £10 million product & public liability insurance
- Two models producing 300m<sup>3</sup> & 700m<sup>3</sup> smoke per minute
- External UPS for off-mains operation

### OPERATION

- Inputs to accommodate 'Set', 'Trigger' & 'Hold-off'
- Outputs to provide 'Ready State' and 'Low Fluid' warnings
- Simple smoke control

### CONSTRUCTION

- Rugged & compact metal casing
- Wall & ceiling mounting

### DATA

Rapid HP:

- 36(H) x 22(D) x 39(W) cm
- Weight 20 kg

Rapid ELM:

- 34(H) x 14(D) x 33(W) cm
- Weight 12 kg

## RAPID DEPLOY



### FEATURES

- Very competitive pricing
- Easy installation
- Compact, rugged casing
- Floor mount
- British and European standard compliant
- £10 million product & public liability insurance
- Based on the High Powered Rapid Install producing 700m<sup>3</sup> smoke per minute
- External UPS for off-mains

### OPERATION

- On-board event log operation
- Radio key fob arm/disarm
- Push button programming
- Audio tones and LED display to indicate status
- Simple smoke control

### CONSTRUCTION

- Rugged & compact metal casing
- Available with flight case for transport

### DATA

Rapid HP:

- 36(H) x 22(D) x 39(W) cm
- Weight 20 kg

Radio key fob:

- Rolling code Keeloq® Encryption
- European Frequency 433.92MHz

## SOUND BARRIER & XENON FLASH

### FEATURES

- Competitive pricing
- Easy installation
- Simple integration into existing alarm systems
- Wall or ceiling mount
- £10 million product & public liability insurance

### OPERATION

- Simple 0 – 12-volt trigger

### CONSTRUCTION

- Rugged, compact aluminium & steel casing
- Silver colour



### SOUND BARRIER DATA

- 11/18-volt DC
- Current 55 mA standby; 1.2 Amps via internal battery
- 127dB at 1 metre
- Internal battery backup



### XENON FLASH DATA

- 1.5-15kW output power (model dependant)
- Dip switch programming
- 240V mains powered

# CONCEPT SMOKE SCREEN

**MAIN OFFICE:**  
1-2 NORTH END, SWINESHEAD, BOSTON, LINCS PE20 3LR

TEL: +44(0)1205 821111 | FAX: +44(0)1205 820316 | EMAIL: [INFO@SMOKE-SCREEN.CO.UK](mailto:INFO@SMOKE-SCREEN.CO.UK) | [WWW.SMOKE-SCREEN.CO.UK](http://WWW.SMOKE-SCREEN.CO.UK)