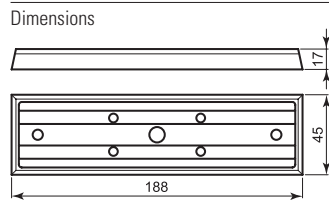


1.14

Accessories available for electromagnetic door holders

300-K-BASE • 500-K-BASE • 300-K-STL • 500-K-STL • 300-K-STU-E • 500-K-STU-E

1



300-K-BASE

Base for 300 Kg electromagnetic counter plate

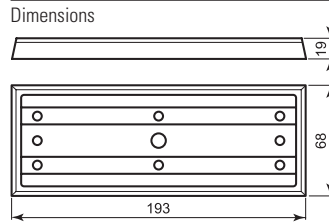
For mounting the counter plate on fire barrier doors

Material: die-cast aluminium

Provided with M8 screw with damping washer

Weight: 0.22 Kg

Applicability: 1388-A



500-K-BASE

Base for 500 Kg electromagnetic counter plate

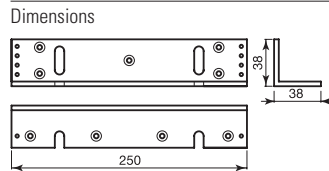
For mounting the counter plate on fire barrier doors

Material: die-cast aluminium

Provided with M8 screw with damping washer

Weight: 0.32 Kg

Applicability: 1392-A, 1395-A, 1396-A



300-K-STL

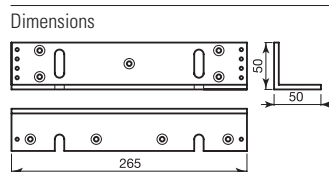
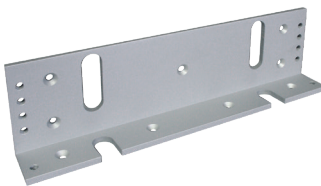
"L" shaped bracket to mount 300 Kg electromagnets

For mounting the electromagnet on vertical surfaces of the door frame

Material: anodized aluminium

Weight: 0.27 Kg

Applicability: 1388-A



500-K-STL

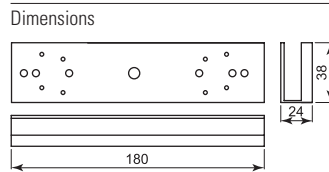
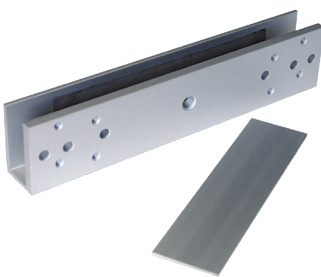
"L" shaped bracket to mount 500 Kg electromagnets

For mounting the electromagnet on vertical surfaces of the door frame

Material: anodized aluminium

Weight: 0.39 Kg

Applicability: 1392-A, 1395-A



300-K-STU-E

"U" shaped bracket for 300 Kg counter plate – anodized aluminium

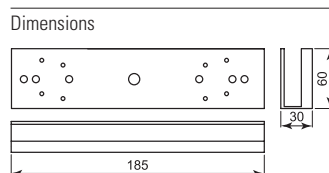
For mounting backplates to 10-14mm glass

Requires also L shaped bracket code 300 K STL for 300 Kg electromagnet door holder

Provided with: 3 mounting dowels, 5 M5 screws, galvanized steel protection plate, 2 rubber seals, socket head screw

Weight: 0.56 Kg

Applicability: 1388-A



500-K-STU-E

"U" shaped bracket for 500 Kg counter plate – anodized aluminium

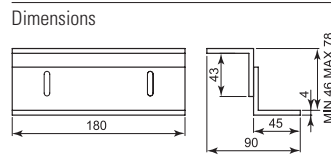
For mounting backplates to 10-14mm glass

Requires also L shaped bracket code 500 K STL for 500 Kg electromagnet door holder

Provided with: 3 mounting dowels, 5 M5 screws, galvanized steel protection plate, 2 rubber seals, socket head screw.

Weight: 0.70 Kg

Applicability: 1392-A, 1395-A, 1396-A



300-K-STZ

"Z" shaped bracket for 300 Kg electromagnet door holder complete with "L" shaped bracket – anodized aluminium

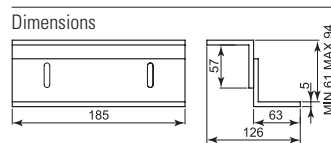
For mounting the plate with electromagnet placed outside the door opening (e.g. with "L" shaped bracket)

Consists of 2 "L" shaped brackets which are fitted to form a "Z"

Provided with: 6 M5 screws, M8 screw with damping washer.

Weight: 0.60 Kg

Applicability: 1388-A



500-K-STZ

"Z" shaped bracket for 500 Kg electromagnet door holder complete with "L" shaped bracket – anodized aluminium

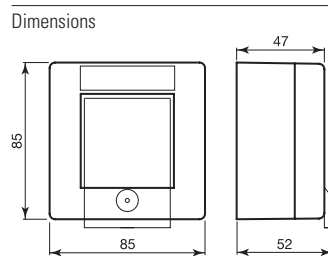
For mounting the plate with electromagnet placed outside the door opening (e.g. with "L" shaped bracket)

Consists of 2 "L" shaped brackets which are fitted to form a "Z"

Provided with: 6 M5 screws, M8 screw with damping washer.

Weight: 0.60 Kg

Applicability: 1392-A, 1395-A, 1396-A



2495-CSA

Universal glass break emergency button

Suitable to release electromagnet door holders

Double changeover contact

Material: thermoplastic, white

Protection rating IP54

Connection: clamping screws

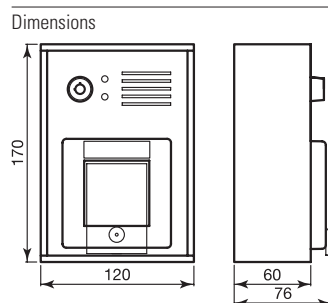
Provided with sealable transparent protection flap.

Available in green, code 2495-V.

Spare glass code 2472-U.

Weight: 0.18 Kg

Applicability: all electromagnetic door holders.



2498-R

Control board for emergency doors with timer

Settable timer card from 0.5 to 120s, with delayed relay upon release or activation through external command.

Power supply 12-24 V DC

Power consumption from 3 to 20 mA with live relay (@ 12 V DC)

Emergency button included, type 2495-CSA with dual changeover contact.

Spare lock code CSA07980.

Spare glass code 2472-U.

Weight: 0.78 Kg

Applicability: all electromagnetic door holders.