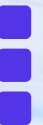


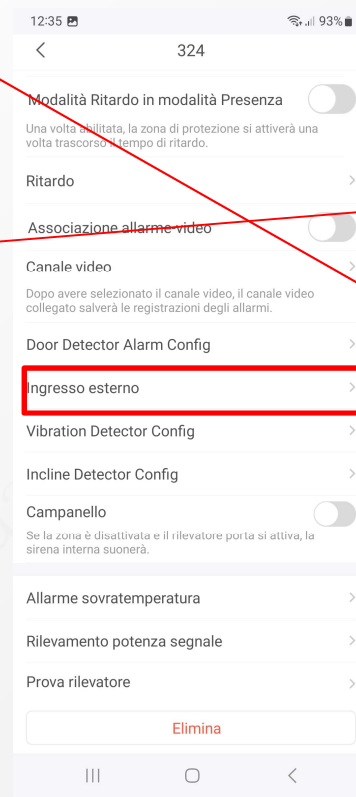
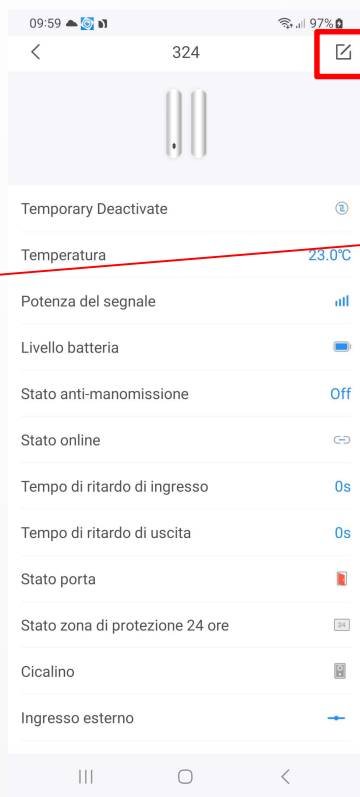
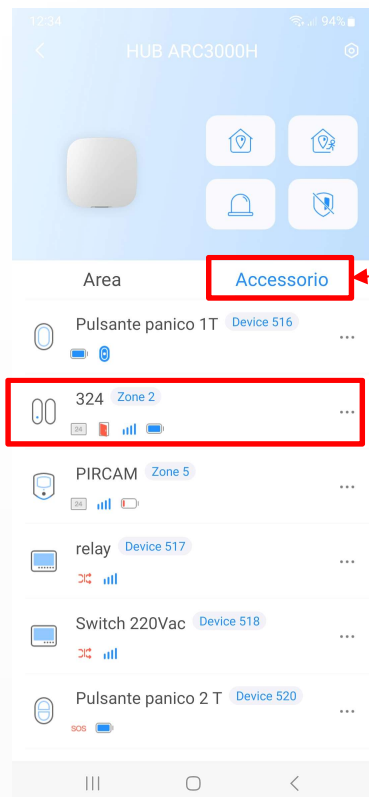


How to:

Come assegnare 2 aree differenti ad un contatto a 2 canali in Airshield



DMSS APP: assegnare 2 aree diverse ad un contatto a 2 canali

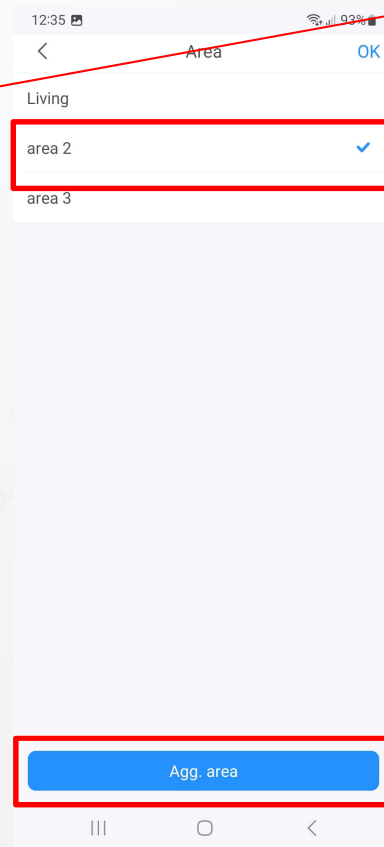
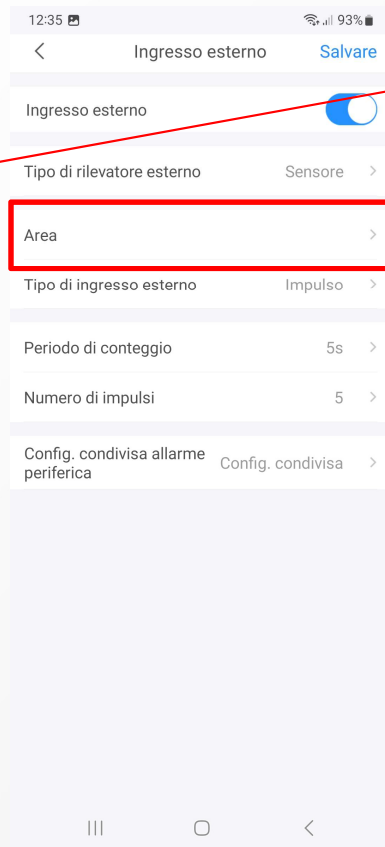


STEP 1- clic su accessorio e selezionare il contatto 324

STEP 2- selezionare impostazioni (fig2)

STEP 3- selezionare ingresso esterno

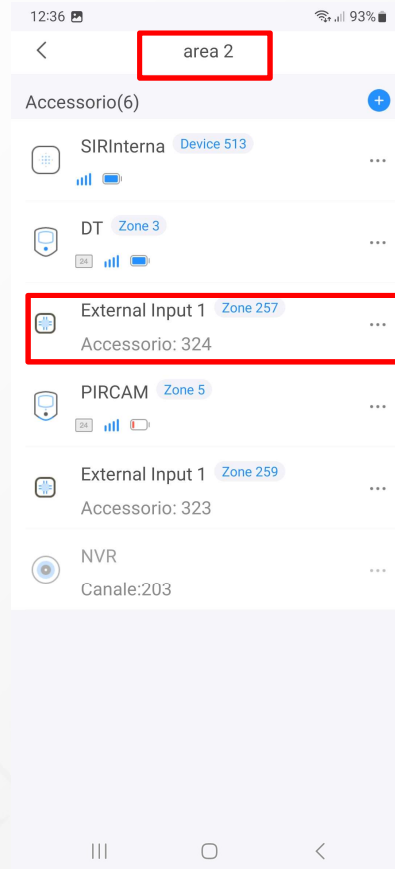
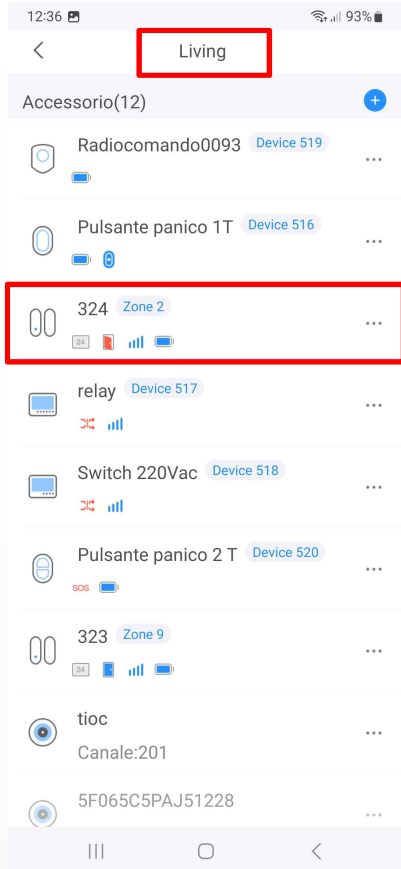
DMSS APP: assegnare 2 aree diverse ad un contatto a 2 canali



STEP 1- in "tipo rilevatore esterno" selezionare l'impostazione desiderata

STEP 2- Selezionare l'area desiderata, oppure crearne una nuova

DMSS APP: assegnare 2 aree diverse ad un contatto a 2 canali



è possibile visualizzare i 2 canali del contatto doppio sulle 2 aree a cui sono stati assegnati