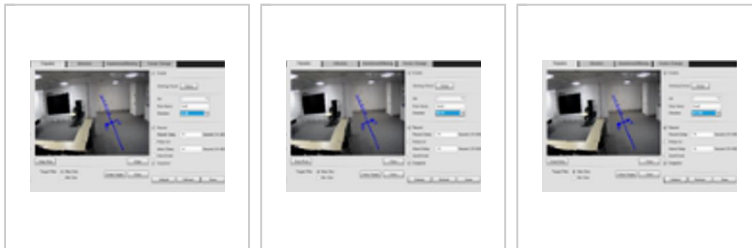


Description

Application Scene: it can only be applied to the scene where the targets are sparse and there is rarely any covering between targets, such as the perimeter without any guard.

It will trigger alarm when the target passes through the warning line according to the set movement direction. It takes some time from the target appears to the target is confirmed, so it needs to leave some space when setting warning line, do not set it near the covering.

Function Description: it is to detect if there is any object crossing the warning line, it can support different direction selection, such as A->B, B->A and bidirectional, and it can activate record , snapshot and alarm according to the judgment result.



A->B

B->A

Bidirectional

Prerequisites

- Intelligent Network Camera.
- A HDCVI Camera that is connected to a HDCVI DVR that has intelligent features.
- Updated firmware that supports intelligent features.
- Internet Explorer.

IVS Best Practices

To assess issues with IVS compatibility between the camera and NVR, please update both devices to the most current firmware and factory reset the NVR, and use the hard reset button to reset the camera.

Video Instructions

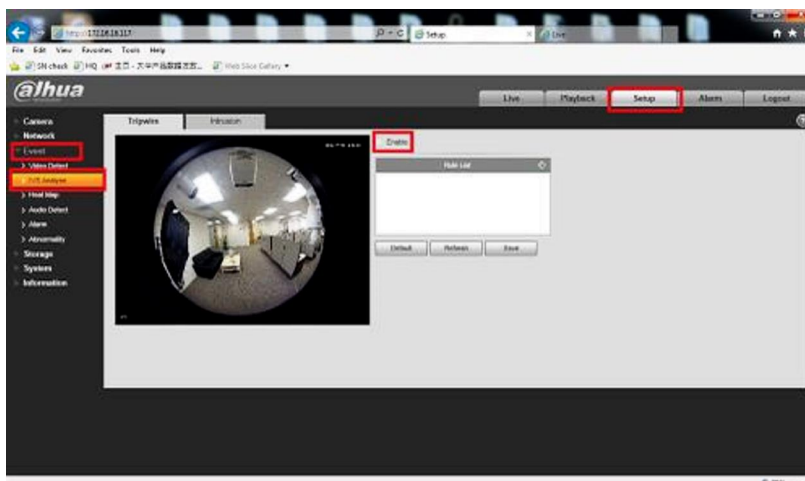
Contents

- 1 Tripwire
 - 1.1 Description
 - 1.2 Prerequisites
 - 1.3 IVS Best Practices
 - 1.4 Video Instructions
 - 1.5 Step by Step Instructions
 - 1.6 System Interface Setup
 - 1.6.1 Prerequisites
 - 1.7 Video Instructions
 - 1.7.1 Step by Step Instructions
 - 1.8 SmartPSS Setup
 - 1.8.1 Prerequisites
 - 1.8.2 Video Instructions
 - 1.8.3 Step by Step Instructions
 - 1.9 SmartPSS 2 Setup
 - 1.9.1 Prerequisites
 - 1.10 Video Instructions
 - 1.11 Step by Step Instructions

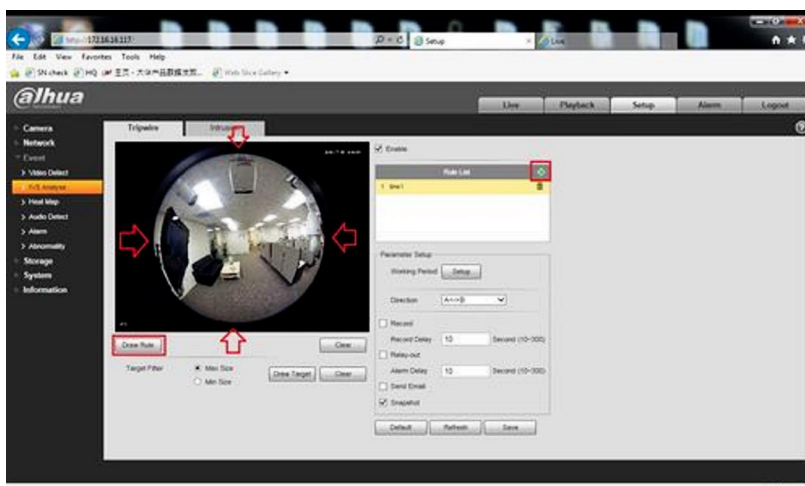


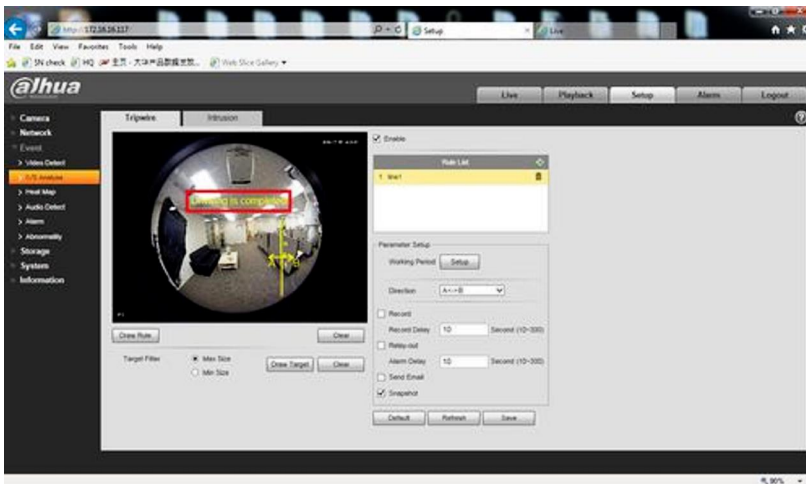
Step by Step Instructions

1. Navigate through Internet Explorer on the camera Setup-> Event -> IVS Analyse -> Click “Enable” button, the default rule name is line 1, line 2, line 3, line 4 when adding rule, it is ok to modify the rule name.

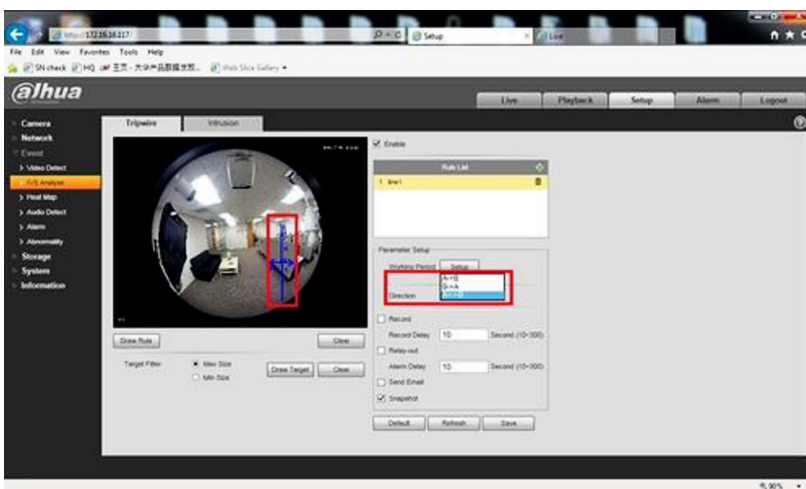


2. Click “Draw Rule” and draw a warning line in the image according to the actual needs, it will trigger alarm when the target is crossing the warning line according to the set movement direction.

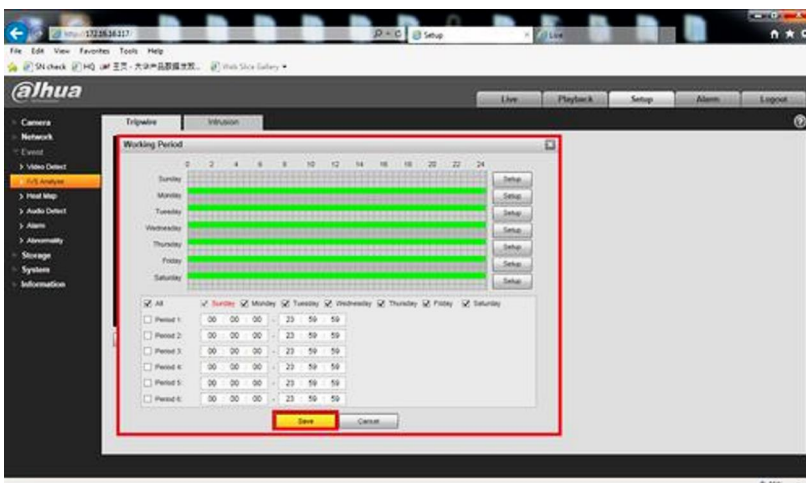




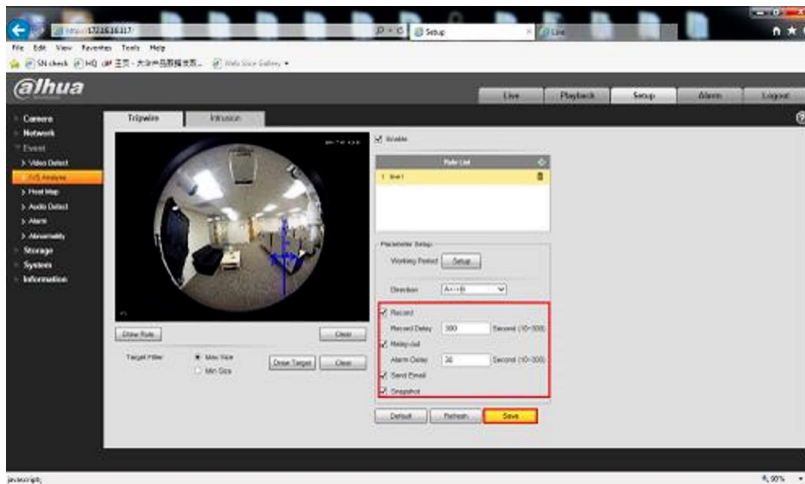
3. Select one of the following directions: A->B, A<-B, AB and it is to judge if it will trigger intelligent alarm when tripwire happens according to the selected direction.



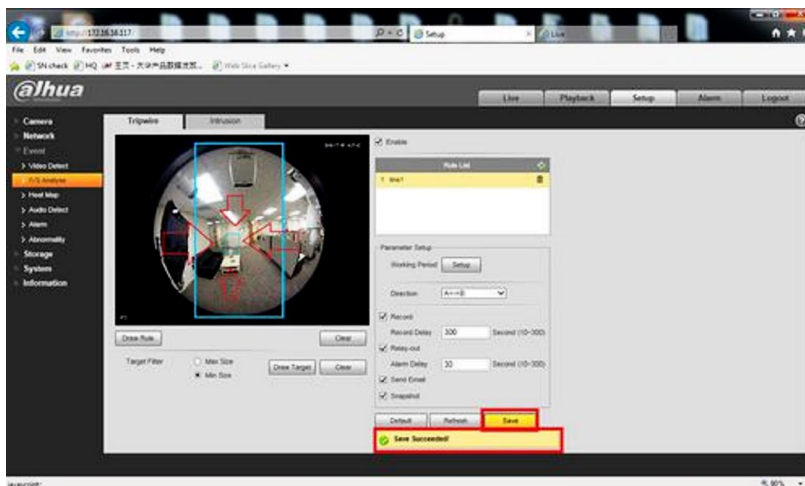
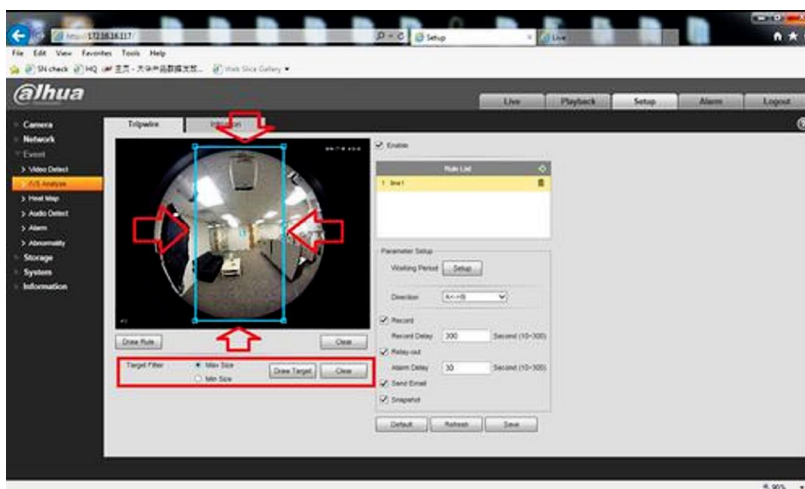
4. Working period setting, default it all day.



5. Support alarm activation setup: record, relay-out, send email and snapshot.



6. Target filter can set max size and min size; it means the max and min target it can detect.



System Interface Setup

Prerequisites

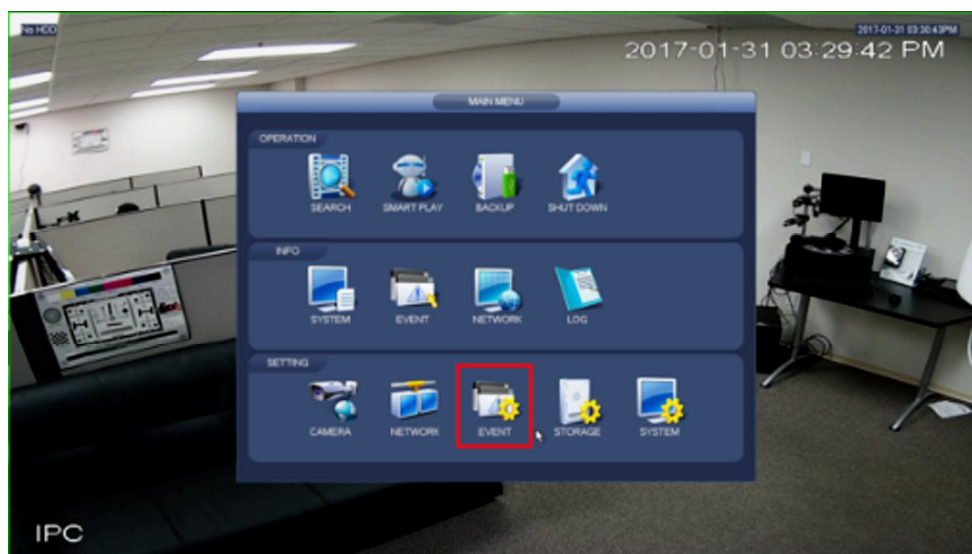
- NVR with IVS capable
- Camera with IVS capable

Video Instructions

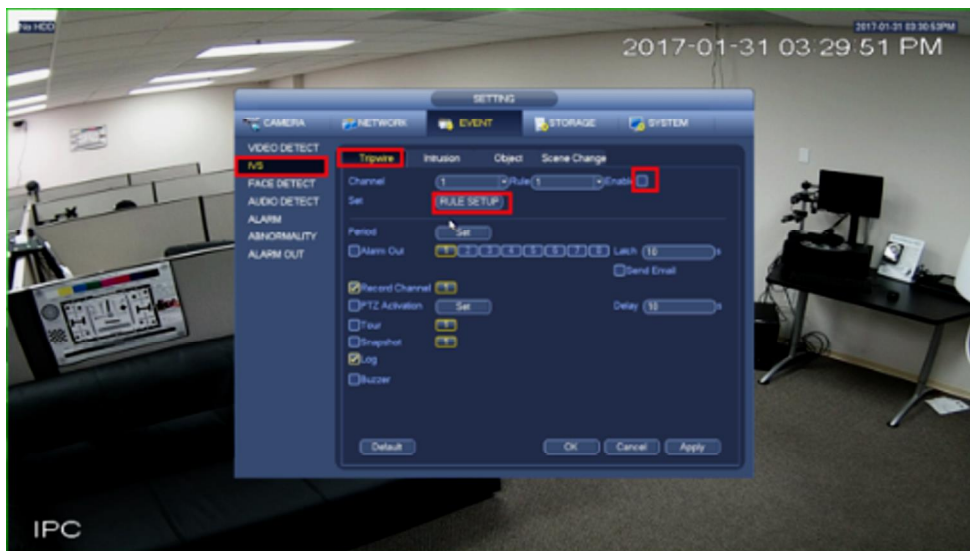


Step by Step Instructions

1. Go to Event.



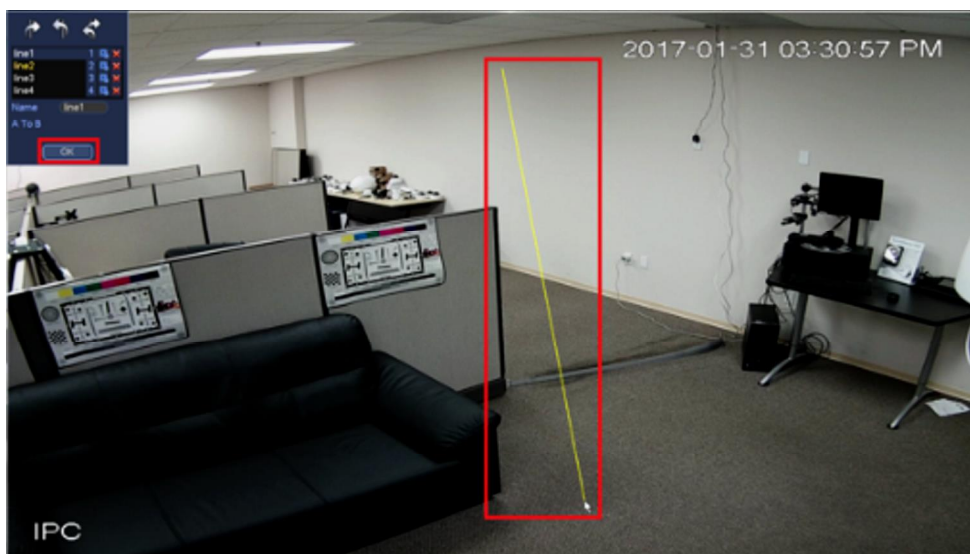
2. Enable tripwire under IVS and then click on rule setup.



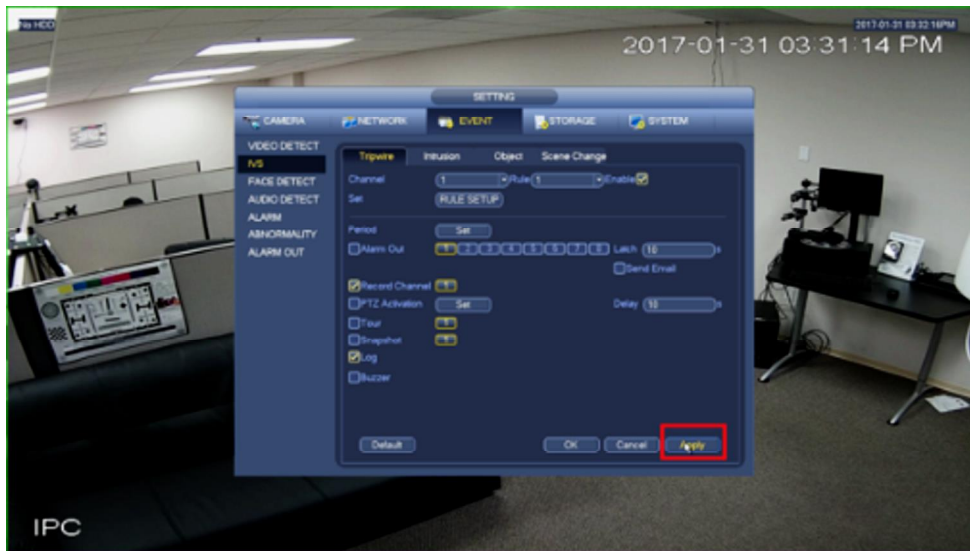
3. Select direction of the tripwire and click on which line to draw.



4. Draw the line and click ok.



5. Click apply.

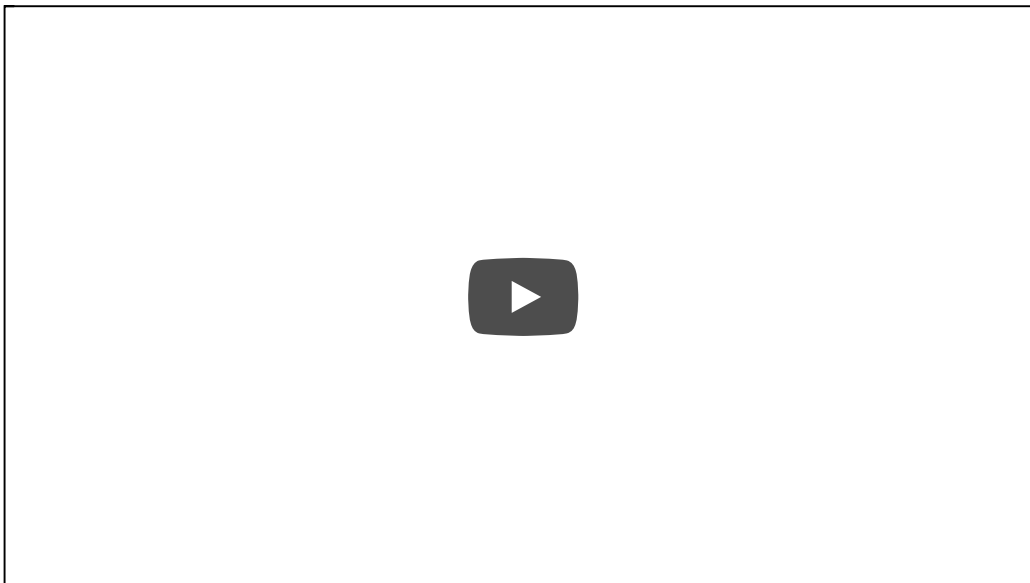


SmartPSS Setup

Prerequisites

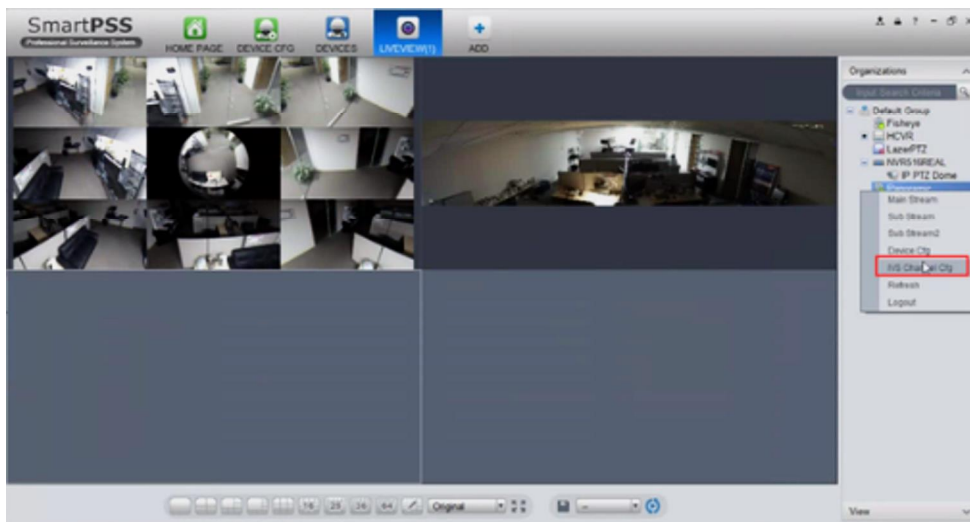
- SmartPSS
- IVS capable device with Face Detection
- Upgraded devices to latest firmware

Video Instructions

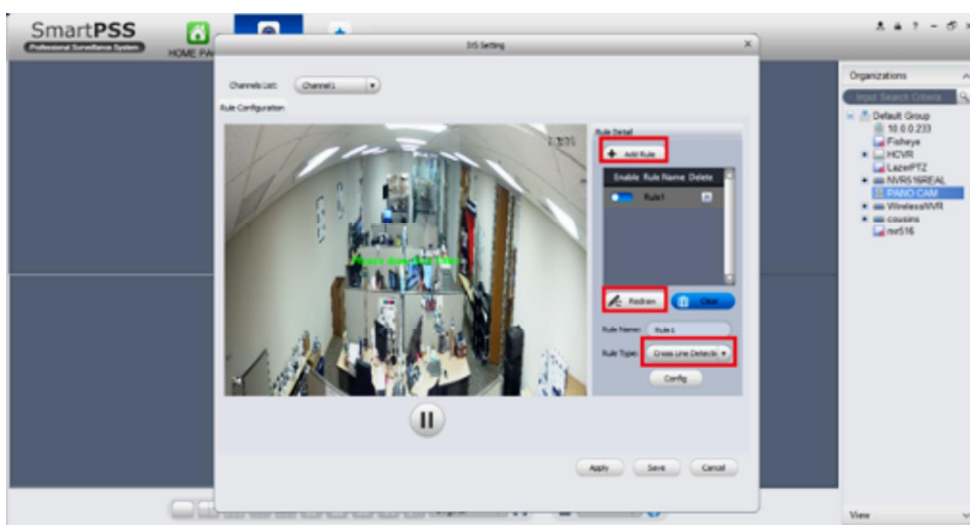


Step by Step Instructions

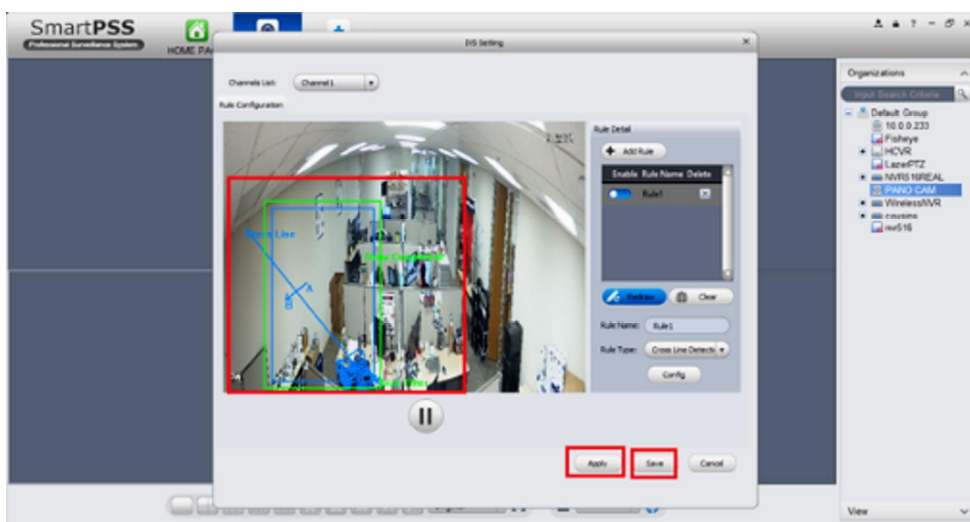
1. Right click and select IVS channel config.



2. Click Add Rule if rule doesn't exist, select cross line detection, click on draw/redraw.



3. Draw Rule -> select max and min size -> apply -> save.



SmartPSS 2 Setup

Prerequisites

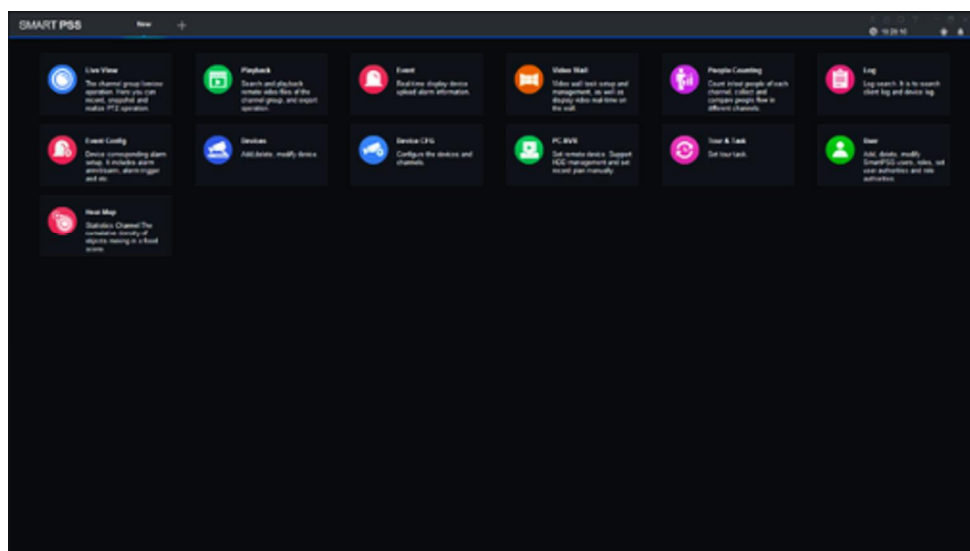
- SmartPSS 2.0
- IVS capable device with Face Detection
- Upgraded devices to latest firmware

Video Instructions

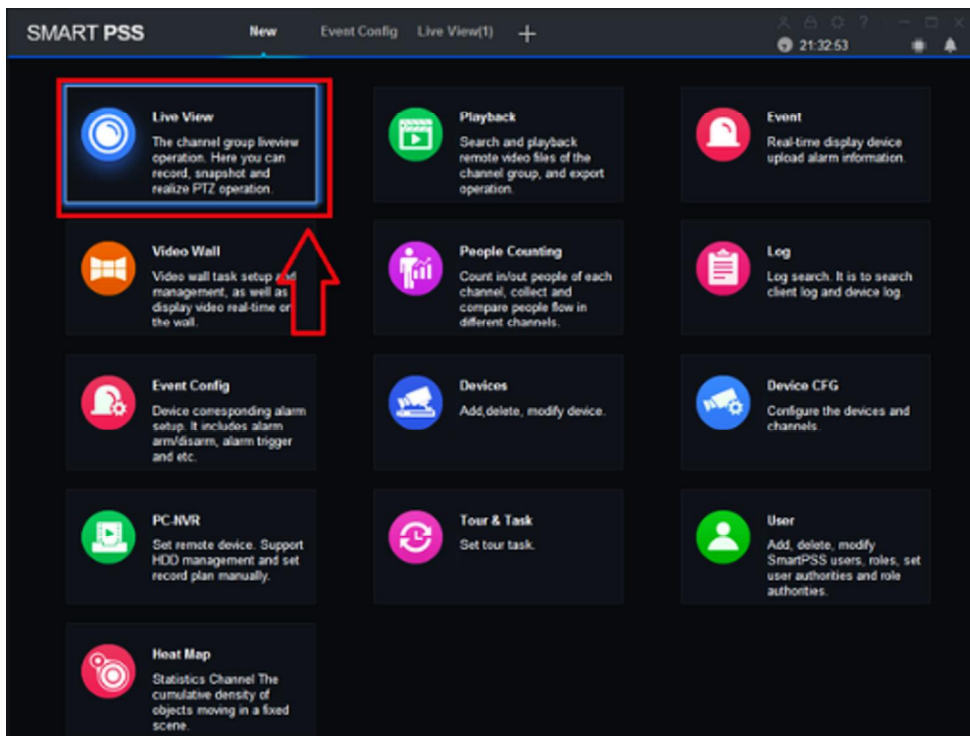


Step by Step Instructions

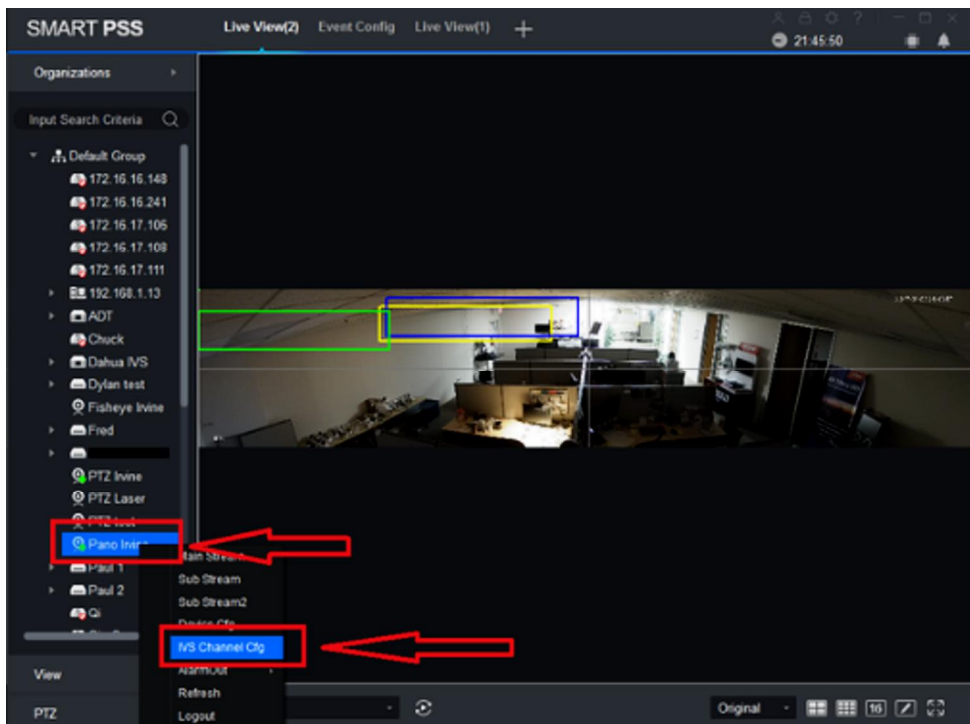
1. Launch and Log into Smart PSS



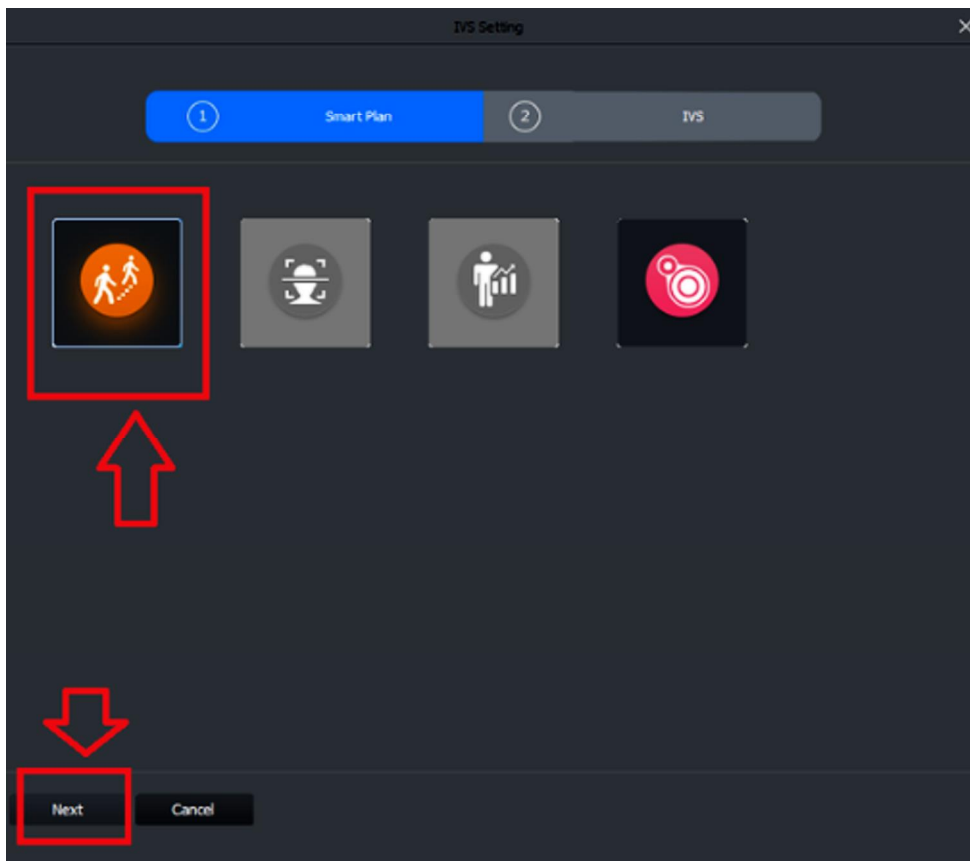
2. Select "Live".



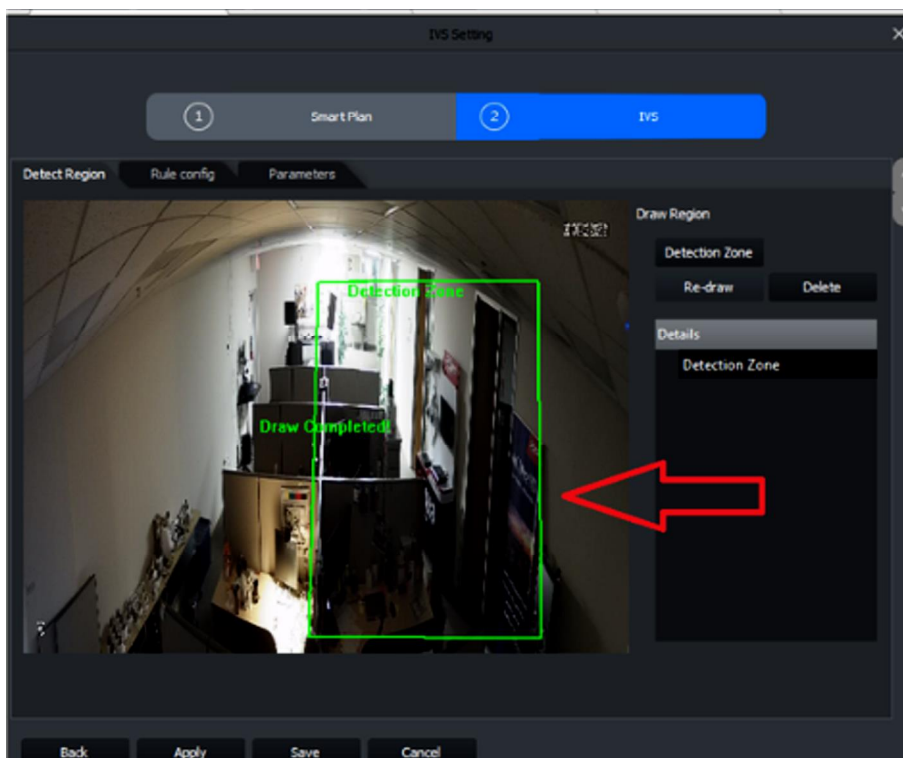
3. From Live View Select Device that is IVS capable -> right click on device and select IVS Config.



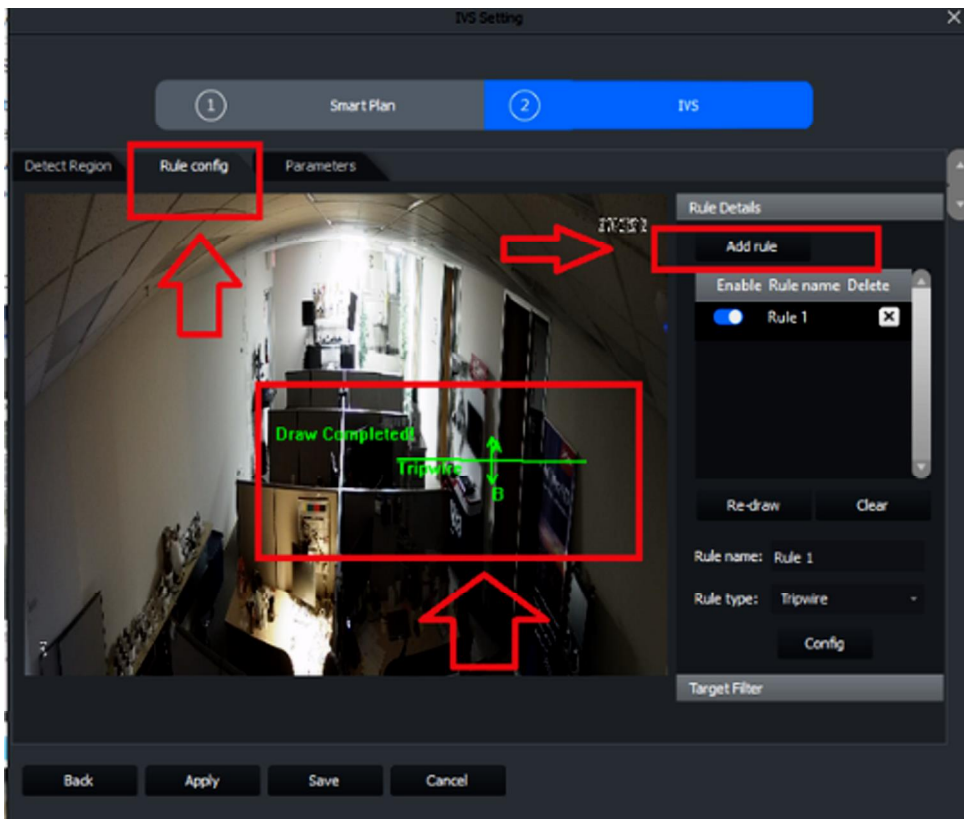
4. Select Trip Wire -> Select Next.



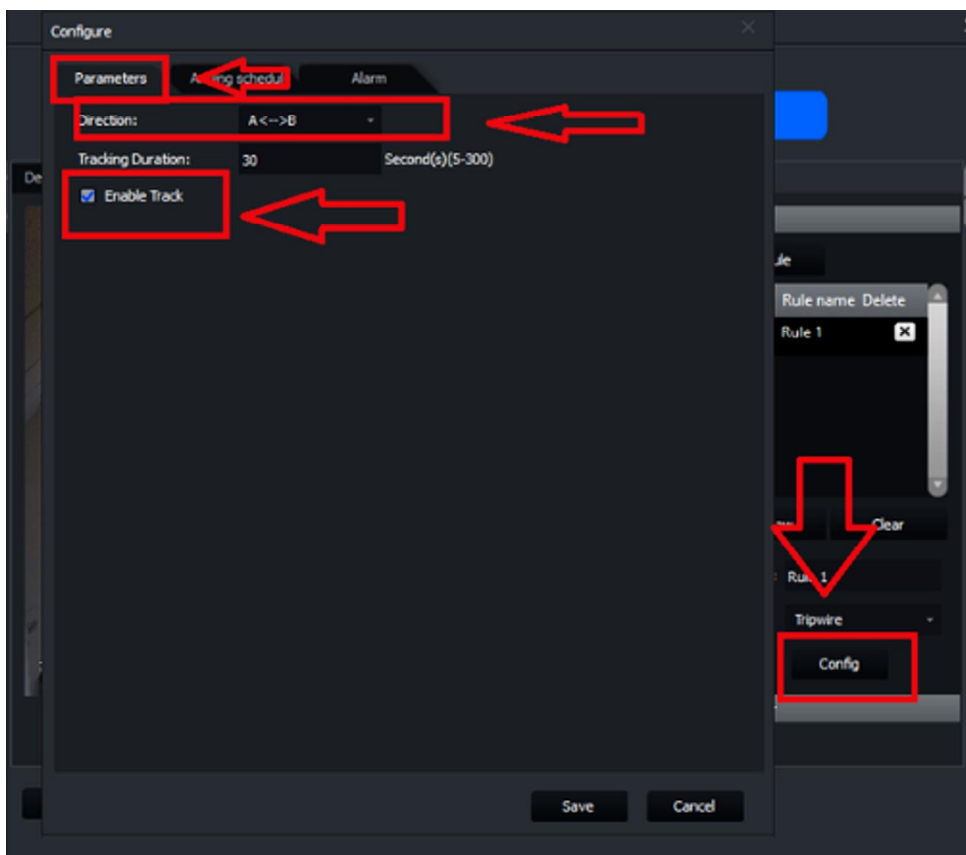
5. Draw a detection zone.



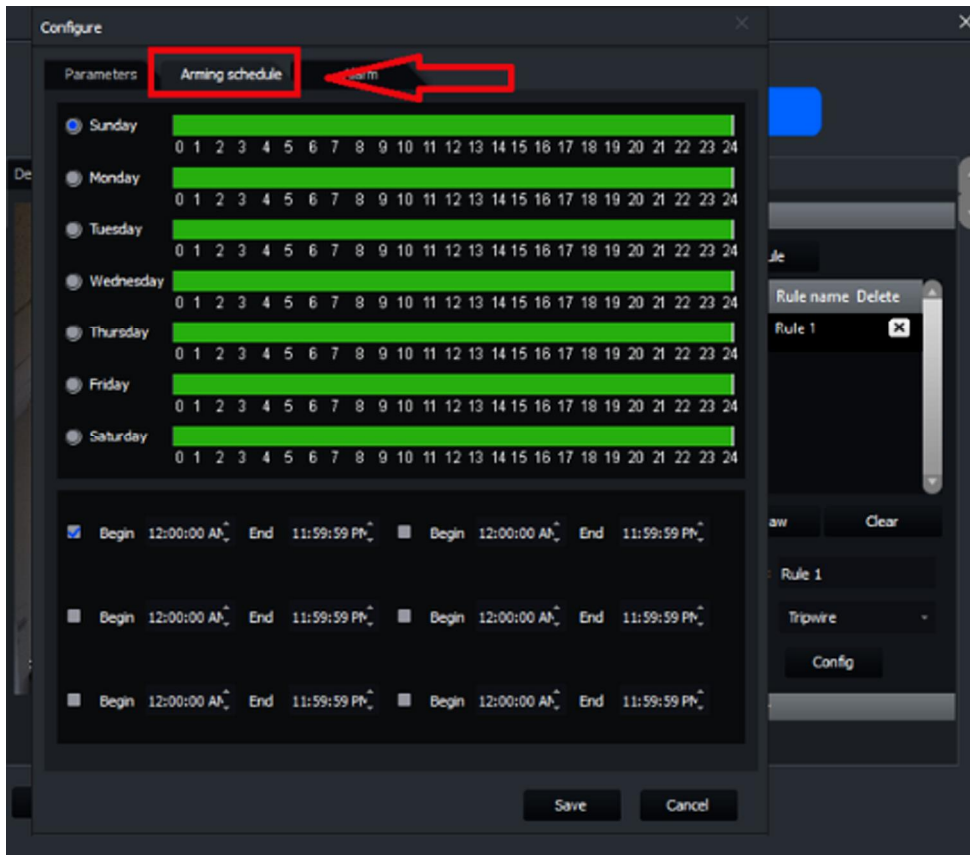
6. Select Rule Config -> Add Rule -> Draw Rule. More than one rule can be added and drawn.



6. Select Config -> Parameters -> choose direction (in this tutorial it is set to bi-directional) -> Track may be enable to track subject.



7. Set Arming Schedule -> Select Save



8. From Parameters you may select disturbance filter and Adjust sensitivity -> apply and save.

