



SAMSUNG TECHWIN





BEYOND *series* *Beyond Your Expectation*




1280H Analog Camera & DVR







BEYOND Camera Selection

	Box			Bullet
	SCB-5005	SCB-5003	SCB-5000	SCO-5083R
				
Imaging Device	1/3" 1.3M CMOS	1/3" 1.3M CMOS	1/3" 1.3M CMOS	1/3" 1.3M CMOS
Min. Illumination (50 IRE)	Color : 0.03Lux, B/W : 0.003Lux	Color : 0.03Lux, B/W : 0.003Lux	Color : 0.03Lux	Color : 0.05Lux, B/W : 0Lux (IR LED on)
Lens (Mount)	Optional (C / CS)	Optional (C / CS)	Optional (C / CS)	3.3x varifocal (3 ~ 10mm)
Horizontal Resolution	Color : 1000TV lines	Color : 1000TV lines	Color : 1000TV lines	Color : 1000TV lines
Simple Focus	Yes	N/A	N/A	N/A
P-Iris	Yes	N/A	N/A	N/A
Day & Night	Yes (ICR)	Yes (ICR)	Yes (Electrical)	Yes (ICR)
Wide Dynamic Range	Yes (120dB)	Yes (120dB)	N/A	Yes (120dB)
Alarm I/O	0 / 1	0 / 1	N/A	0 / 1
Motion Detection	Yes	Yes	Yes	Yes
Intelligent Video Analytics	Fence, (Dis)Appear, Counting (Off / On)	Fence, (Dis)Appear, Counting (Off / On)	N/A	Fence, (Dis)Appear, Counting (Off / On)
Digital Image Stabilization	Yes	Yes	Yes	Yes
Coax Control	Pelco-C	Pelco-C	Pelco-C	Pelco-C
RS-485 Control	Samsung-T/E, Pelco-D/P, Panasonic, Bosch, Honeywell, Vicon, AD, GE	Samsung-T/E, Pelco-D/P, Panasonic, Bosch, Honeywell, Vicon, AD, GE	N/A	N/A
IR Range	N/A	N/A	N/A	50m (164ft)
Environmental Protection	N/A	N/A	N/A	IP66, IK10
Operating Temperature	-10°C ~ +55°C (+14°F ~ +131°F)	-10°C ~ +55°C (+14°F ~ +131°F)	-10°C ~ +55°C (+14°F ~ +131°F)	-10°C ~ +55°C (+14°F ~ +131°F)
Power	Dual (24V AC & 12V DC)	Dual (24V AC & 12V DC)	Dual (24V AC & 12V DC), 12V DC	Dual (24V AC & 12V DC)

	Dome			
	SCD-5083	SCD-5080	SCD-5030	SCD-5020
				
Imaging Device	1/3" 1.3M CMOS	1/3" 1.3M CMOS	1/3" 1.3M CMOS	1/3" 1.3M CMOS
Min. Illumination (50 IRE)	Color : 0.03Lux, B/W : 0.003Lux	Color : 0.05Lux	Color : 0.09Lux	Color : 0.09Lux
Lens (Mount)	3.8x varifocal (2.8 ~ 10.5mm)	3.3x varifocal (3 ~ 10mm)	6mm fixed	3.6mm fixed
Horizontal Resolution	Color : 1000TV lines	Color : 1000TV lines	Color : 1000TV lines	Color : 1000TV lines
Day & Night	Yes (ICR)	Yes (Electrical)	Yes (Electrical)	Yes (Electrical)
Wide Dynamic Range	Yes (120dB)	N/A	N/A	N/A
Alarm I/O	0 / 1	N/A	N/A	N/A
Motion Detection	Yes	Yes	Yes	Yes
Intelligent Video Analytics	Fence, (Dis)Appear, Counting (Off / On)	N/A	N/A	N/A
Digital Image Stabilization	Yes	Yes	Yes	Yes
Coax Control	Pelco-C	Pelco-C	Pelco-C	Pelco-C
Installation Type	Surface	Surface	Surface	Surface
Operating Temperature	-10°C ~ +55°C (+14°F ~ +131°F)	-10°C ~ +55°C (+14°F ~ +131°F)	-10°C ~ +55°C (+14°F ~ +131°F)	-10°C ~ +55°C (+14°F ~ +131°F)
Power	Dual (24V AC & 12V DC)	Dual (24V AC & 12V DC)	Dual (24V AC & 12V DC)	Dual (24V AC & 12V DC)

	IR Dome	Vandal-Resistant	IR Vandal-Resistant
	SCD-5083R	SCV-5083	SCV-5083R
			
Imaging Device	1/3" 1.3M CMOS	1/3" 1.3M CMOS	1/3" 1.3M CMOS
Min. Illumination (50 IRE)	Color : 0.05Lux, B/W : 0Lux (IR LED on)	Color : 0.03Lux, B/W : 0.003Lux	Color : 0.05Lux, B/W : 0Lux (IR LED on)
Lens (Mount)	3.3x varifocal (3 ~ 10mm)	3.8x varifocal (2.8 ~ 10.5mm)	3.3x varifocal (3 ~ 10mm)
Horizontal Resolution	Color : 1000TV lines	Color : 1000TV lines	Color : 1000TV lines
Day & Night	Yes (ICR)	Yes (ICR)	Yes (ICR)
Wide Dynamic Range	Yes (120dB)	Yes (120dB)	Yes (120dB)
Alarm I/O	0 / 1	0 / 1	0 / 1
Motion Detection	Yes	Yes	Yes
Intelligent Video Analytics	Fence, (Dis)Appear, Counting (Off / On)	Fence, (Dis)Appear, Counting (Off / On)	Fence, (Dis)Appear, Counting (Off / On)
Digital Image Stabilization	Yes	Yes	Yes
Coax Control	Pelco-C	Pelco-C	Pelco-C
RS-485 Control	N/A	N/A	Samsung-T/E, Pelco-D/P, Panasonic, Bosch, Honeywell, Vicon, AD, GE
IR Range	30m (98ft)	N/A	30m (98ft)
Installation Type	Surface	Surface	Surface
Environmental Protection	N/A	IP66, IK10	IP66, IK10
Operating Temperature	-10°C ~ +55°C (+14°F ~ +131°F)	-10°C ~ +55°C (+14°F ~ +131°F)	-10°C ~ +55°C (+14°F ~ +131°F)
Power	Dual (24V AC & 12V DC)	Dual (24V AC & 12V DC)	Dual (24V AC & 12V DC)

BEYOND DVR Selection

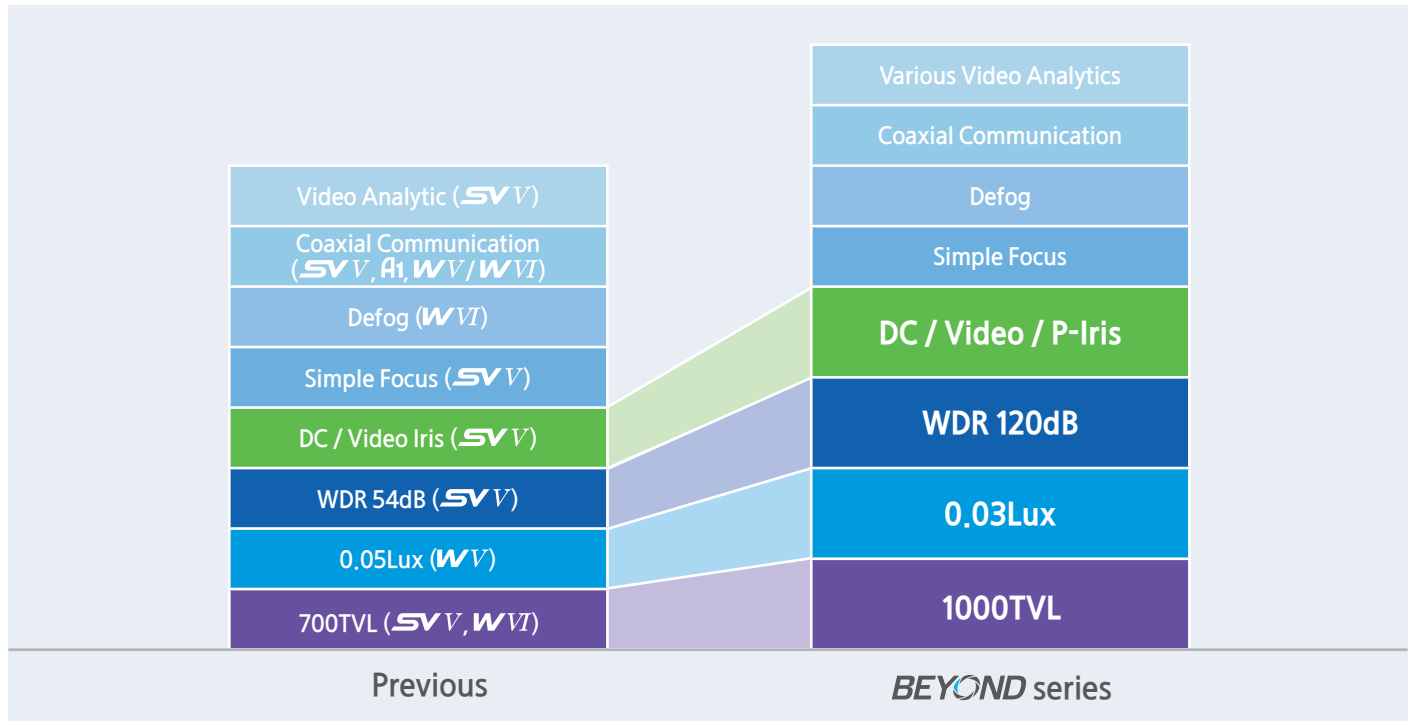
		16CH		8CH	4CH
		SRD-1676D	SRD-1656D	SRD-876D	SRD-476D
					
OS	Embedded	Linux	Linux	Linux	Linux
Live	Frame Rate (NTSC / PAL)	480fps / 400fps	480fps / 400fps	240fps / 200fps	120fps / 100fps
Recording	Max. Record Rate / NTSC	480fps@1280 x 480	120fps@1280 x 480	240fps@1280 x 480	120fps@1280 x 480 * P/B : 60fps@1280 x 480, 120fps@960 x 480
	Max. Record Rate / PAL	400fps@1280 x 576	100fps@1280 x 576	200fps@1280 x 576	100fps@1280 x 576 * P/B : 50fps@1280 x 576, 120fps@960 x 576
	Compression	H.264	H.264	H.264	H.264
Video	Inputs	16CH	16CH	8CH	4CH
	Loop Outputs	Yes	Yes	Yes	Yes
Audio	Inputs	16CH (Built-in 4CH)	16CH (Built-in 4CH)	8CH (Built-in 4CH)	4CH (Built-in 4CH)
Storage	Internal HDD	Up to 4 SATA HDDs	Up to 4 SATA HDDs	Up to 4 SATA HDDs	Up to 1 SATA HDD
	External HDD	Up to 2 expansion bays	Up to 2 expansion bays	Up to 2 expansion bays	N/A
Monitors	VGA	Yes	Yes	Yes	Yes
	HDMI	Yes	Yes	Yes	Yes
	Main Composite	N/A	N/A	N/A	N/A
	Spot Composite	2CH (Digital)	2CH (Digital)	2CH (Digital)	2CH (Digital / Analog)
Connections	USB	2 ports	2 ports	2 ports	2 ports
	e-SATA	2 External SATA ports	2 External SATA ports	2 External SATA ports	N/A
	DVD Writer (Back up)	Yes	Yes	Yes	Yes
	Mouse	Yes	Yes	Yes	Yes
Network	Remote Users	Search 3 / Live unicast 10 / Live multicast 20	Search 3 / Live unicast 10 / Live multicast 20	Search 3 / Live unicast 10 / Live multicast 20	Search 3 / Live unicast 10 / Live multicast 20
	Transmission	4CIF, 2CIF, CIF	4CIF, 2CIF, CIF	4CIF, 2CIF, CIF	4CIF, 2CIF, CIF
	Monitoring	SmartViewer, Webviewer, SSM	SmartViewer, Webviewer, SSM	SmartViewer, Webviewer, SSM	SmartViewer, Webviewer, SSM
PTZ Control	Coax Protocol	Samsung CCVC, Pelco-C	Samsung CCVC, Pelco-C	Samsung CCVC, Pelco-C	Samsung CCVC, Pelco-C
	RS-485 Protocol	Samsung-T/E, Pelco-D/P, Panasonic, Phillips, AD, DIAMOND, ERNA, KALATEL, VCL TP, VICON, ELMO, GE	Samsung-T/E, Pelco-D/P, Panasonic, Phillips, AD, DIAMOND, ERNA, KALATEL, VCL TP, VICON, ELMO, GE	Samsung-T/E, Pelco-D/P, Panasonic, Phillips, AD, DIAMOND, ERNA, KALATEL, VCL TP, VICON, ELMO, GE	Samsung-T/E, Pelco-D/P, Panasonic, Phillips, AD, DIAMOND, ERNA, KALATEL, VCL TP, VICON, ELMO, GE
VA		Motion Detection, Tampering	Motion Detection, Tampering	Motion Detection, Tampering	Motion Detection, Tampering

BEYOND series

Beyond Your Expectation

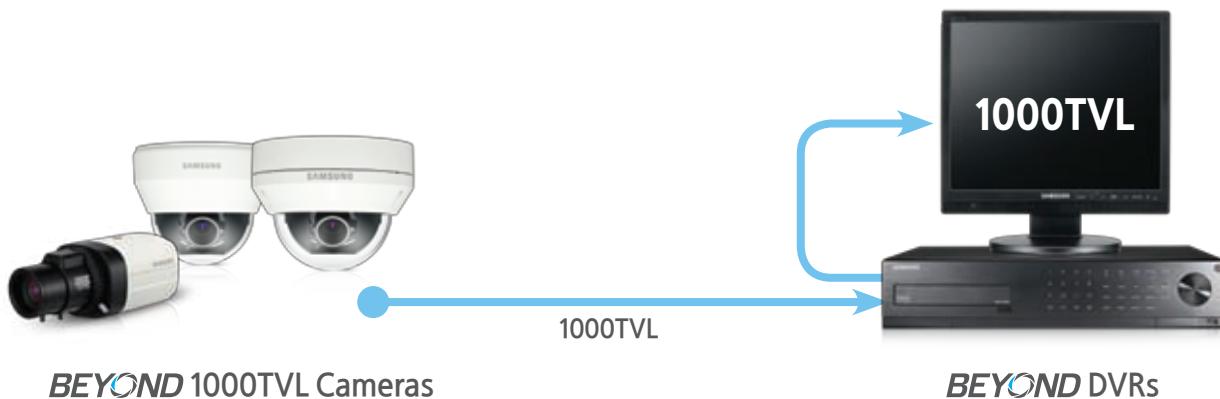


BEYOND is new line-up analog products from Samsung that provides the exceptional image quality through the best resolution, outstanding backlight compensation and multitude of user friendly functions. **BEYOND** offers the best analog system solutions that goes beyond your expectation.



Complete 1280H Solution

BEYOND series 1000TVL cameras used with our 1280H DVRs deliver a complete 1280H solution.



- 1000TVL resolution
- Superior low light and WDR compared to competitors
- Standard CCTV cameras (PAL/NTSC)

- 1280H real-time DVR
- Up to 480(NTSC)/400(PAL) fps recording rate (16CH DVRs)
- Enhanced Network Bandwidth up to 32Mbps

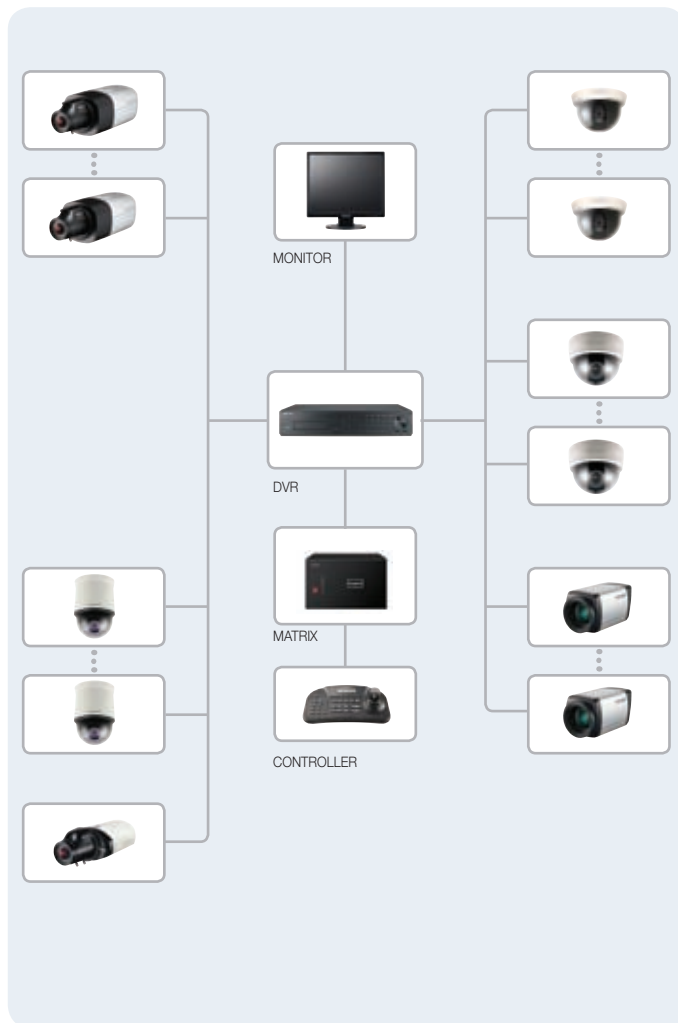
Why *BEYOND* Series?

Samsung Techwin is committed to lowering users' total cost of ownership. W7 chipset embedded in our *BEYOND* series cameras has enhanced features from the existing Analog system, maximizing image qualities (Resolution, Backlight, Low-light) and adding more features (Chromatic aberration, VA, 24 P-zones, Tampering, etc).

Different from HD CCTV systems that apply manufactures' own standards, *BEYOND* series cameras satisfy the standards of NTSC/PAL. This ensures that *BEYOND* series cameras are compatible with existing analog systems, infrastructure, and cabling without the need for replacement.

**BEYOND* camera + DVR is recommended to achieve maximum performance of 1280H.

Existing System



Add *BEYOND* Series



24h Clear View

There is no doubt the most important requirement of video surveillance cameras is the flexibility to create the best images 24/7 regardless of the weather conditions. The Beyond series adopts Samsung's new Winner7 DSP that promises to enhance your level of security by providing 1000TV lines resolution and technologies that will deliver you a return on your investment.



Current Challenges...

"During the day, some areas of the scene are blurred and not clear."

"At night, scenes look noisy or too dark to see clearly."

"When your image comprises of indoor and outdoor scenes, one area is either too dark or too bright."

"When it is foggy the scene is obscured."

1000TV lines (1280H) High Resolution

Using advanced 1000TV lines (1280H) resolution gives the user % greater image quality to see much clearer images than 700TV lines (960H) cameras. With this powerful tool, users can identify detail in the picture where previously this was not possible.



Conventional Camera



1000TV lines (1280H)

SSNR IV

By adopting SSNR IV Samsung's new generation of noise reduction technology, much improved on the successful SSNR III as it adopts a new method of motion blur reduction. Users can view clean images without image blur or ghosting when it really matters low light nighttime conditions.



SSNR Off



SSNR On

Defog

Defog function helps to improve the images during poor weather conditions such as fog and yellow-dust. The visibility of the cameras can be enhanced in any weather condition and users can get much improved clarity regardless of weather conditions when using Samsung's Defog function.



Defog Off



Defog On

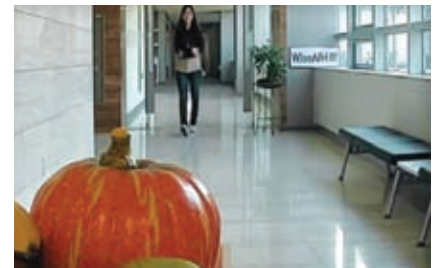
P-Iris

P-Iris optimizes the resolution at both the center and corner of the image, as well as the depth of field and shutter speed, provides increased image sharpness, especially when viewing long scenes such as corridors, station platforms or supermarket aisles.

※ SCB-5005 supports, available 3Q in 2014.



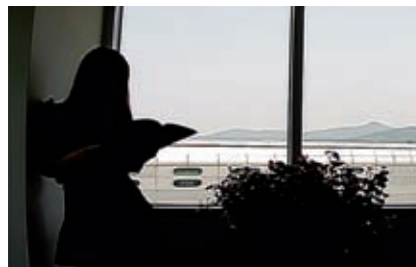
Conventional Camera



P-Iris

WDR 120dB

The WDR function provides clear images even under extreme contrasting light conditions ; such as shop fronts or hotel receptions, where the light entering through the windows differs greatly from within, causing either over bright or over dark images when standard cameras are used, Samsung's Beyond series works with a contrast ratio of more than 120dB WDR, that accurately reproduces the detail of the images giving users the sharp clear images of the scene they need.



WDR Off



WDR On

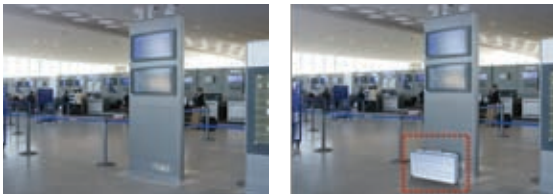
Not only just Monitoring, Also User Convenience

As markets mature, the roles for video surveillance system expand beyond the role of just monitoring. Samsung have listened to the market and extended the functionalities of their cameras and DVRs by offering various video analytics as well as user oriented functions to help customers analyze their business and make their life easier. Samsung provides easiest GUI (Graphic User Interface) for those first-time users who are not familiar with systems. Additionally, customers can access the management system remotely via PC and on the go via Smartphones.

Various Video Analytics

Fixed/Moved : The Fixed, senses when objects have appeared and remained in a scene for longer than a pre-determined period and the Moved, detects when objects are removed from a scene.

Fixed (Appear, Left Behind)



Moved (Disappear, Taken Away)



Tampering : When a camera's field of view is changed (camera moved or covered), the camera will detect and create an automatically alert.



Fence : Two modes can be set on the Fence function. Area mode provides a virtual electronic area, while the Line mode provides a virtual directional line on the scene that generates an alarm in the event of a breach of that area or a crossing of the directional line.



Tracking : Tracks an object through the scene and generates an alarm in the event of abnormal directional changes.



Motion : Any change occurring in predefined fields of view generates an alarm.

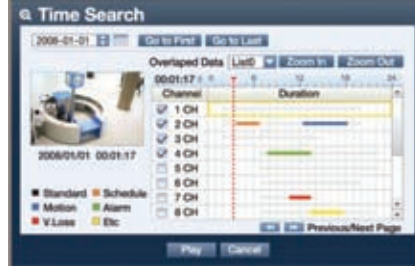


Not only just Monitoring, Also User Convenience

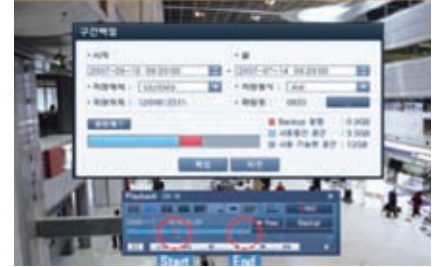
Easy GUI



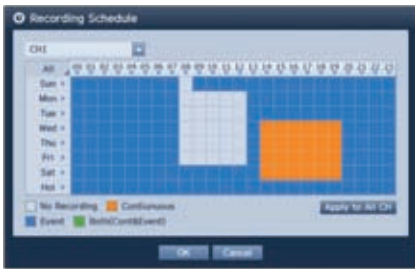
Easy User Interface



Easy Searching (Preview)



Easy Back up during Playback



Each Channel's Setting



Smart Searching



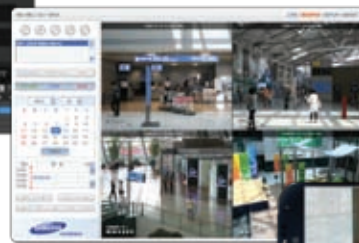
Privacy Masking

Remote Monitoring

Beyond DVR range, the SRD-1676D series supports remote monitoring through a choice of software platforms ; SSM, SmartViewer, Web viewer as well as on-the-go with iPolis Mobile for Smartphones. User can monitor and control Live, Event, Alarm and Playback images from the DVRs through these platforms. The built-in web viewer offers enhanced compatibility, via Chrome, Explorer and Safari, while the Smartphone monitoring supports both iOS and Android.



SSM



Webviewer



Smart Phone

SCB-5005

Preliminary Version

1000TVL (1280H) WDR Camera



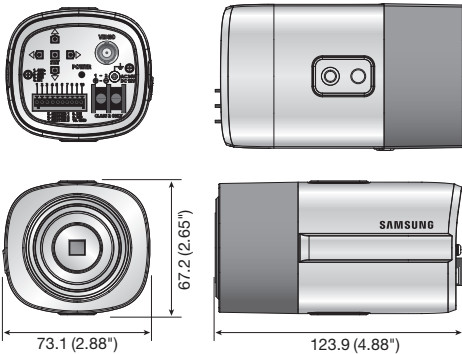
* Lens not included

Key Features

- High resolution of 1000TV lines (Color), 1000TV lines (B/W)
- 0.03Lux@F1.2, 50IRE (Color), 0.003Lux@F1.2 50IRE (B/W)
0.01Lux@F1.2, 30IRE (Color), 0.001Lux@F1.2 30IRE (B/W)
- 120dB WDR, Day & Night (ICR), Simple focus, P-Iris
- SSSR, SSSNRIV, Defog, Intelligent video analytics
- Coax : Pelco-C (Coaxitron), RS-485, Dual power

Dimensions

Unit : mm (inch)



Available Lenses / Accessories (Optional)



	SCB-5005N	SCB-5005P
VIDEO		
Imaging Device	1/3" 1.3M CMOS	
Total Pixels	1,312(H) x 1,069(V)	
Effective Pixels	1,305(H) x 1,049(V)	
Scanning System	Progressive scan	
Synchronization	Internal	
Frequency	H : 15.734KHz / V : 59.94Hz	H : 15.625KHz / V : 50Hz
Horizontal Resolution	Color : 1000TV lines, B/W : 1000TV lines	
Min. Illumination	Color : 0.03Lux (F1.2, 50IRE), 0.001Lux (1sec, F1.2, 50IRE), 0.01Lux (F1.2, 30IRE), 0.0003Lux (1sec, F1.2, 30IRE) B/W : 0.003Lux (F1.2, 50IRE), 0.0001Lux (1sec, F1.2, 50IRE), 0.001Lux (F1.2, 30IRE), 0.00003Lux (1sec, F1.2, 30IRE)	
S / N Ratio	52dB (AGC off, Weight on)	
Video Output	CVBS : 1.0Vpp / 75Ω composite	
LENS		
Focus Control	Simple focus / Manual, Button control (Manual, Simple focus, Day & Night)	
Lens Type	Manual / DC auto iris / P-iris / Video iris	
Mount Type	C / CS	
OPERATIONAL		
On Screen Display	English, Chinese, Korean, Japanese, German, Italian, French, Spanish, Russian, Czech, Polish, Romanian, Serbian, Swedish, Danish, Turkish, Portuguese	
Camera Title	Off / On (Displayed 15 characters)	
Day & Night	Auto (ICR) / External / Color / B/W	
Backlight Compensation	Off / User BLC / HLC / WDR	
Wide Dynamic Range	120dB	
Contrast Enhancement	SSDR (Off / On)	
Digital Noise Reduction	SSNRIV (Off / On)	
Defog	Off / Auto / Manual	
Purple Fringe Reduction	Off / Low / Middle / High	
Digital Image Stabilization	Off / On	
Tampering	Off / On	
Motion Detection	Off / On	
Intelligent Video Analytics	Fence, (Dis)Appear, Counting (Off / On)	
Privacy Masking	Off / On (24 programmable zones with 4 points polygonal masking)	
Gain Control	Off / Low / Middle / High	
White Balance	ATW / Outdoor / Indoor / Manual / AWC / Mercury (1,800K° ~ 10,500K°)	
Electronic Shutter Speed	1sec ~ 1/12,000sec	
Digital Zoom	Off / On (1x ~ 16x)	
Reverse	Off / H-Rev / V-Rev / HV-Rev	
Profile	Basic, Day & Night, Backlight, ITS, Indoor, User	
Alarm	1 Out	
Communication	Coaxial control (SPC-300 compatible), RS-485	
Protocol	Coax : Pelco-C (Coaxitron) RS-485 : Samsung-T/E, Pelco-D/P, Panasonic, Bosch, Honeywell, Vicon, AD, GE	
ENVIRONMENTAL		
Operating Temperature / Humidity	-10°C ~ +55°C (+14°F ~ +131°F) / Less than 90% RH	
ELECTRICAL		
Input Voltage / Current	Dual (24V AC & 12V DC ±10%)	
Power Consumption	Max. 6W	
MECHANICAL		
Color / Material	Black, Silver / Aluminum, Plastic	
Dimensions (WxHxD)	73.1 x 67.2 x 123.9mm (2.88" x 2.65" x 4.88")	
Weight	300g (0.66 lb)	

* The latest product information / specification can be found at www.samsungsecurity.com

SCB-5003

1000TVL (1280H) WDR Camera



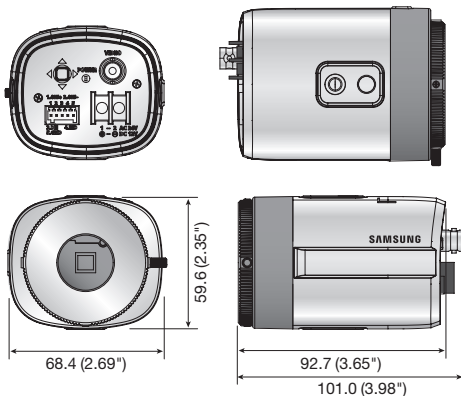
* Lens not included

Key Features

- High resolution of 1000TV lines (Color), 1000TV lines (B/W)
- 0.03Lux@F1.2, 50IRE (Color), 0.003Lux@F1.2 50IRE (B/W)
0.01Lux@F1.2, 30IRE (Color), 0.001Lux@F1.2 30IRE (B/W)
- 120dB WDR, Day & Night (ICR)
- SSSR, SSSNRIV, Defog, Intelligent video analytics
- Coax : Pelco-C (Coaxitron), RS-485, Dual power

Dimensions

Unit : mm (inch)



Available Lenses / Accessories (Optional)



	SCB-5003N	SCB-5003P
VIDEO		
Imaging Device	1/3" 1.3M CMOS	
Total Pixels	1,312(H) x 1,069(V)	
Effective Pixels	1,305(H) x 1,049(V)	
Scanning System	Progressive scan	
Synchronization	Internal	
Frequency	H : 15.734KHz / V : 59.94Hz	H : 15.625KHz / V : 50Hz
Horizontal Resolution	Color : 1000TV lines, B/W : 1000TV lines	
Min. Illumination	Color : 0.03Lux (F1.2, 50IRE), 0.001Lux (1sec, F1.2, 50IRE), 0.01Lux (F1.2, 30IRE), 0.0003Lux (1sec, F1.2, 30IRE) B/W : 0.003Lux (F1.2, 50IRE), 0.0001Lux (1sec, F1.2, 50IRE), 0.001Lux (F1.2, 30IRE), 0.00003Lux (1sec, F1.2, 30IRE)	
S / N Ratio	52dB (AGC off, Weight on)	
Video Output	CVBS : 1.0 Vpp / 75Ω composite	
LENS		
Focus Control	Manual	
Lens Type	Manual / DC auto iris / Video iris	
Mount Type	C / CS	
OPERATIONAL		
On Screen Display	English, Chinese, Korean, Japanese, German, Italian, French, Spanish, Russian, Czech, Polish, Romanian, Serbian, Swedish, Danish, Turkish, Portuguese	
Camera Title	Off / On (Displayed 15 characters)	
Day & Night	Auto (ICR) / External / Color / B/W	
Backlight Compensation	Off / User BLC / HLC / WDR	
Wide Dynamic Range	120dB	
Contrast Enhancement	SSDR (Off / On)	
Digital Noise Reduction	SSNRIV (Off / On)	
Defog	Off / Auto / Manual	
Purple Fringe Reduction	Off / Low / Middle / High	
Digital Image Stabilization	Off / On	
Tampering	Off / On	
Motion Detection	Off / On	
Intelligent Video Analytics	Fence, (Dis)Appear, Counting (Off / On)	
Privacy Masking	Off / On (24 programmable zones with 4 points polygonal masking)	
Gain Control	Off / Low / Middle / High	
White Balance	ATW / Outdoor / Indoor / Manual / AWC / Mercury (1,800K° ~ 10,500K°)	
Electronic Shutter Speed	1sec ~ 1/12,000sec	
Digital Zoom	Off / On (1x ~ 16x)	
Reverse	Off / H-Rev / V-Rev / HV-Rev	
Profile	Basic, Day & Night, Backlight, ITS, Indoor, User	
Alarm	1 Out	
Communication	Coaxial control (SPC-300 compatible), RS-485	
Protocol	Coax : Pelco-C (Coaxitron) RS-485 : Samsung-T/E, Pelco-D/P, Panasonic, Bosch, Honeywell, Vicon, AD, GE	
ENVIRONMENTAL		
Operating Temperature / Humidity	-10°C ~ +55°C (+14°F ~ +131°F) / Less than 90% RH	
ELECTRICAL		
Input Voltage / Current	Dual (24V AC & 12V DC ±10%)	
Power Consumption	Max. 6W	
MECHANICAL		
Color / Material	Black, Ivory / Aluminum, Plastic	
Dimensions (WxHxD)	68.4 x 59.6 x 92.7mm (2.69" x 2.35" x 3.65")	
Weight	210g (0.46 lb)	

* The latest product information / specification can be found at www.samsungsecurity.com

SCB-5000

1000TVL (1280H) Camera



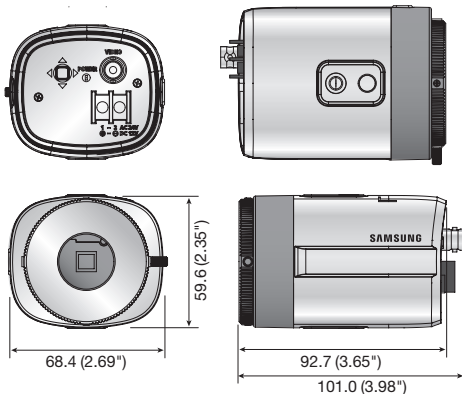
* Lens not included

Key Features

- High resolution of 1000TV lines (Color), 1000TV lines (B/W)
- Min. illumination 0.03Lux@F1.2, 50IRE, 0.01Lux@F1.2, 30IRE
- SDDR, SSNRIV, Defog
- Coax : Pelco-C (Coaxitron), Dual power, 12V DC

Dimensions

Unit : mm (inch)



Available Lenses / Accessories (Optional)



SLA-M2890DN SLA-M3180DN SLA-3580DN SLA-2812DN SLA-550DV SLA-12240 SLA-880



SHB-4300H/4300H1/4300H2 SHB-4200/4200H STB-400 use with STH-500 or STH-200 STB-4150V

	SCB-5000N	SCB-5000ND	SCB-5000P	SCB-5000PD
VIDEO				
Imaging Device	1/3" 1.3M CMOS			
Total Pixels	1,312(H) x 1,069(V)			
Effective Pixels	1,305(H) x 1,049(V)			
Scanning System	Progressive scan			
Synchronization	Internal			
Frequency	H : 15.734KHz / V : 59.94Hz		H : 15.625KHz / V : 50Hz	
Horizontal Resolution	Color : 1000TV lines, B/W : 1000TV lines			
Min. Illumination	0.03Lux (F1.2, 50IRE), 0.001Lux (1sec, F1.2, 50IRE) 0.01Lux (F1.2, 30IRE), 0.0003Lux (1sec, F1.2, 30IRE)			
S / N Ratio	52dB (AGC off, Weight on)			
Video Output	CVBS : 1.0Vpp / 75Ω composite			
LENS				
Focus Control	Manual			
Lens Type	Manual / DC auto iris			
Mount Type	C / CS			
OPERATIONAL				
On Screen Display	English, Chinese, Korean, Japanese, German, Italian, French, Spanish, Russian, Czech, Polish, Romanian, Serbian, Swedish, Danish, Turkish, Portuguese			
Camera Title	Off / On (Displayed 15 characters)			
Day & Night	Auto (Electrical) / Color / B/W			
Backlight Compensation	Off / User BLC / HLC			
Contrast Enhancement	SSDR (Off / On)			
Digital Noise Reduction	SSNRIV (Off / On)			
Defog	Off / Auto / Manual			
Purple Fringe Reduction	Off / Low / Middle / High			
Digital Image Stabilization	Off / On			
Tampering	Off / On			
Motion Detection	Off / On			
Privacy Masking	Off / On (24 programmable zones with 4 points polygonal masking)			
Gain Control	Off / Low / Middle / High			
White Balance	ATW / Outdoor / Indoor / Manual / AWC / Mercury (1,800K° ~ 10,500K°)			
Electronic Shutter Speed	1sec ~ 1/12,000sec			
Digital Zoom	Off / On (1x ~ 16x)			
Reverse	Off / H-Rev / V-Rev / HV-Rev			
Profile	Basic, Day & Night, Backlight, ITS, Indoor, User			
Communication	Coaxial control (SPC-300 compatible)			
Protocol	Coax : Pelco-C (Coaxitron)			
ENVIRONMENTAL				
Operating Temperature / Humidity	-10°C ~ +55°C (+14°F ~ +131°F) / Less than 90% RH			
ELECTRICAL				
Input Voltage / Current	Dual (24V AC & 12V DC ±10%)	12V DC	Dual (24V AC & 12V DC ±10%)	12V DC
Power Consumption	Max. 3.7W	Max. 2.7W	Max. 3.7W	Max. 2.7W
MECHANICAL				
Color / Material	Black, Ivory / Aluminum, Plastic			
Dimensions (WxHxD)	68.4 x 59.6 x 92.7mm (2.69" x 2.35" x 3.65")			
Weight	200g (0.44 lb)	175g (0.39 lb)	200g (0.44 lb)	200g (0.39 lb)

* The latest product information / specification can be found at www.samsungsecurity.com

1000TVL (1280H) Weatherproof IR Camera

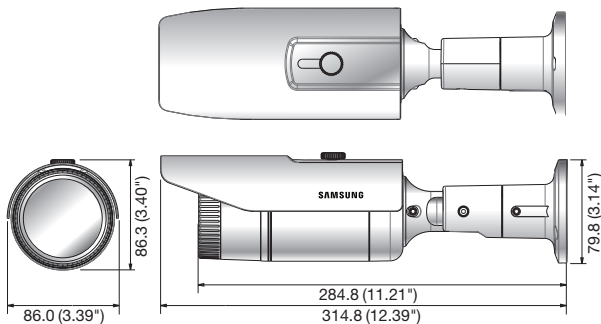


Key Features

- High resolution of 1000TV lines (Color), 1000TV lines (B/W)
- Min. Illumination 0Lux (IR LED on), IR distance 50m
- 3.3x varifocal lens (3 ~ 10mm)
- 120dB WDR, Day & Night (ICR)
- SSSDR, SSSNRIV, Defog, Intelligent video analytics
- IP66, IK10, Coax : Pelco-C (Coaxitron), RS-485, Dual power

Dimensions

Unit : mm (inch)



	SCO-5083RN	SCO-5083RP
VIDEO		
Imaging Device	1/3" 1.3M CMOS	
Total Pixels	1,312(H) x 1,069(V)	
Effective Pixels	1,305(H) x 1,049(V)	
Scanning System	Progressive scan	
Synchronization	Internal	
Frequency	H : 15.734KHz / V : 59.94Hz	H : 15.625KHz / V : 50Hz
Horizontal Resolution	Color : 1000TV lines, B/W : 1000TV lines	
Min. Illumination	Color : 0.05Lux (F1.4, 50IRE), 0.001Lux (1sec, F1.4, 50IRE), 0.02Lux (F1.4, 30IRE), 0.0006Lux (1sec, F1.4, 30IRE) B/W : 0Lux (IR LED on)	
S / N Ratio	52dB (AGC off, Weight on)	
Video Output	CVBS : 1.0 Vpp / 75Ω composite	
LENS		
Focal Length (Zoom Ratio)	3 ~ 10mm (3.3x) varifocal	
Max. Aperture Ratio	F1.4	
Angular Field of View	H : 82.0°(Wide) ~ 26.5°(Tele) / V : 59.7°(Wide) ~ 19.9°(Tele)	
Min. Object Distance	0.5m (1.64ft)	
Focus Control	Manual	
Lens Type	DC auto iris	
Mount Type	Board type	
OPERATIONAL		
On Screen Display	English, Chinese, Korean, Japanese, German, Italian, French, Spanish, Russian, Czech, Polish, Romanian, Serbian, Swedish, Danish, Turkish, Portuguese	
Camera Title	Off / On (Displayed 15 characters)	
Day & Night	Auto (ICR) / External / Color / B/W	
Backlight Compensation	Off / User BLC / HLC / WDR	
Wide Dynamic Range	120dB	
Contrast Enhancement	SSDR (Off / On)	
Digital Noise Reduction	SSNR IV (Off / On)	
Defog	Off / Auto / Manual	
Purple Fringe Reduction	Off / Low / Middle / High	
Digital Image Stabilization	Off / On	
Tampering	Off / On	
Motion Detection	Off / On	
Intelligent Video Analytics	Fence, (Dis)Appear, Counting (Off / On)	
Privacy Masking	Off / On (24 programmable zones with 4 points polygonal masking)	
Gain Control	Off / Low / Middle / High	
White Balance	ATW / Outdoor / Indoor / Manual / AWC / Mercury (1,800K° ~ 10,500K°)	
Electronic Shutter Speed	1sec ~ 1/12,000sec	
Digital Zoom	Off / On (1x ~ 16x)	
Reverse	Off / H-Rev / V-Rev / HV-Rev	
Profile	Basic, Day & Night, Backlight, ITS, Indoor, User	
Alarm	1 Out	
Communication	Coaxial control (SPC-300 compatible)	
Protocol	Coax : Pelco-C (Coaxitron) RS-485 : Samsung-T/E, Pelco-D/P, Panasonic, Bosch, Honeywell, Vicon, AD, GE	
IR Distance	50m (164.04ft) (IR LED 32ea)	
ENVIRONMENTAL		
Operating Temperature / Humidity	-10°C ~ +55°C (+14°F ~ +131°F) / Less than 90% RH	
Ingress Protection	IP66	
Vandal Resistance	IK10	
ELECTRICAL		
Input Voltage / Current	Dual (24V AC & 12V DC ±10%)	
Power Consumption	TBD	
MECHANICAL		
Color / Material	Dark gray / ALDC	
Dimensions (WxH)	86.0 x 86.3 x 314.8mm (3.39" x 3.40" x 12.39")	
Weight	TBD	

* The latest product information / specification can be found at www.samsungsecurity.com

SCD-5083

1000TVL (1280H) WDR Varifocal Dome Camera

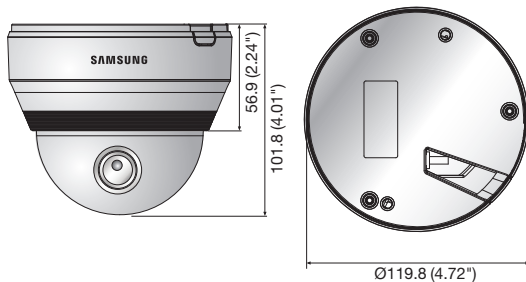


Key Features

- High resolution of 1000TV lines (Color), 1000TV lines (B/W)
- 0.03Lux@F1.2, 50IRE (Color), 0.003Lux@F1.2 50IRE (B/W)
0.01Lux@F1.2, 30IRE (Color), 0.001Lux@F1.2 30IRE (B/W)
- 3.8x varifocal lens (2.8 ~ 10.5mm)
- 120dB WDR, Day & Night (ICR)
- SSSDR, SSSNRIV, Defog, Intelligent video analytics
- Coax : Pelco-C (Coaxitron), Dual power

Dimensions

Unit : mm (inch)



Accessories (Optional)



SBP-301HM4 SBP-300LM SBP-300CM SBP-300WM1 SBP-300WM SBP-300B SBP-300PM SBP-300KM

	SCD-5083N	SCD-5083P
VIDEO		
Imaging Device	1/3" 1.3M CMOS	
Total Pixels	1,312(H) x 1,069(V)	
Effective Pixels	1,305(H) x 1,049(V)	
Scanning System	Progressive scan	
Synchronization	Internal	
Frequency	H : 15.734KHz / V : 59.94Hz	H : 15.625KHz / V : 50Hz
Horizontal Resolution	Color : 1000TV lines, B/W : 1000TV lines	
Min. Illumination	Color : 0.03Lux (F1.2, 50IRE), 0.001Lux (1sec, F1.2, 50IRE), 0.01Lux (F1.2, 30IRE), 0.0003Lux (1sec, F1.2, 30IRE) B/W : 0.003Lux (F1.2, 50IRE), 0.0001Lux (1sec, F1.2, 50IRE), 0.001Lux (F1.2, 30IRE), 0.00003Lux (1sec, F1.2, 30IRE)	
S / N Ratio	52dB (AGC off, Weight on)	
Video Output	CVBS : 1.0 Vpp / 75Ω composite	
LENS		
Focal Length (Zoom Ratio)	2.8 ~ 10.5mm (3.8x) varifocal	
Max. Aperture Ratio	F1.2	
Angular Field of View	H : 91.5°(Wide) ~ 27.7°(Tele) / V : 68.3°(Wide) ~ 20.8°(Tele)	
Min. Object Distance	0.5m (1.64ft)	
Focus Control	Manual	
Lens Type	DC auto iris	
Mount Type	Board type	
OPERATIONAL		
On Screen Display	English, Chinese, Korean, Japanese, German, Italian, French, Spanish, Russian, Czech, Polish, Romanian, Serbian, Swedish, Danish, Turkish, Portuguese	
Camera Title	Off / On (Displayed 15 characters)	
Day & Night	Auto (ICR) / External / Color / B/W	
Backlight Compensation	Off / User BLC / HLC / WDR	
Wide Dynamic Range	120dB	
Contrast Enhancement	SSDR (Off / On)	
Digital Noise Reduction	SSNR IV (Off / On)	
Defog	Off / Auto / Manual	
Purple Fringe Reduction	Off / Low / Middle / High	
Digital Image Stabilization	Off / On	
Tampering	Off / On	
Motion Detection	Off / On	
Intelligent Video Analytics	Fence, (Dis)Appear, Counting (Off / On)	
Privacy Masking	Off / On (24 programmable zones with 4 points polygonal masking)	
Gain Control	Off / Low / Middle / High	
White Balance	ATW / Outdoor / Indoor / Manual / AWC / Mercury (1,800K° ~ 10,500K°)	
Electronic Shutter Speed	1sec ~ 1/12,000sec	
Digital Zoom	Off / On (1x ~ 16x)	
Reverse	Off / H-Rev / V-Rev / HV-Rev	
Profile	Basic, Day & Night, Backlight, ITS, Indoor, User	
Alarm	1 Out	
Communication	Coaxial control (SPC-300 compatible)	
Protocol	Coax : Pelco-C (Coaxitron)	
ENVIRONMENTAL		
Operating Temperature / Humidity	-10°C ~ +55°C (+14°F ~ +131°F) / Less than 90% RH	
ELECTRICAL		
Input Voltage / Current	Dual (24V AC & 12V DC ±10%)	
Power Consumption	Max. 5.6W	
MECHANICAL		
Color / Material	Ivory / Aluminum, Plastic	
Dimensions (WxH)	Ø119.8 x 101.8mm (Ø4.72" x 4.01")	
Weight	535g (1.18 lb)	

* The latest product information / specification can be found at www.samsungsecurity.com

BEYOND SCD-5080

1000TVL (1280H) Varifocal Dome Camera

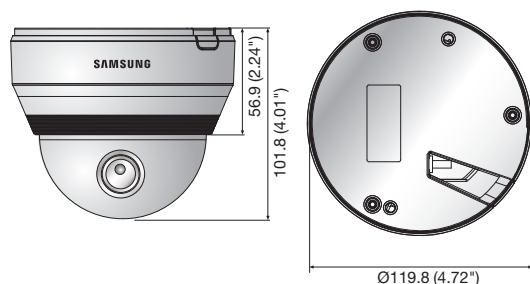


Key Features

- High resolution of 1000TV lines (Color), 1000TV lines (B/W)
- Min. illumination 0.05Lux@F1.4, 50IRE, 0.02Lux@F1.4, 30IRE
- 3.3x varifocal lens (3 ~ 10mm)
- SSSDR, SSSNRIV, Defog
- Coax : Pelco-C (Coaxitron), Dual power

Dimensions

Unit : mm (inch)



Accessories (Optional)



SBP-301HM4 SBP-300LM SBP-300CM SBP-300WM1 SBP-300WM SBP-300B SBP-300PM SBP-300KM

	SCD-5080N	SCD-5080P
VIDEO		
Imaging Device	1/3" 1.3M CMOS	
Total Pixels	1,312(H) x 1,069(V)	
Effective Pixels	1,305(H) x 1,049(V)	
Scanning System	Progressive scan	
Synchronization	Internal	
Frequency	H : 15.734KHz / V : 59.94Hz	H : 15.625KHz / V : 50Hz
Horizontal Resolution	Color : 1000TV lines, B/W : 1000TV lines	
Min. Illumination	0.05Lux (F1.4, 50IRE), 0.001Lux (1sec, F1.4, 50IRE) 0.02Lux (F1.4, 30IRE), 0.0006Lux (1sec, F1.4, 30IRE)	
S / N Ratio	52dB (AGC off, Weight on)	
Video Output	CVBS : 1.0Vpp / 75Ω composite	
LENS		
Focal Length (Zoom Ratio)	3 ~ 10mm (3.3x) varifocal	
Max. Aperture Ratio	F1.4	
Angular Field of View	H : 82.0°(Wide) ~ 26.5°(Tele) / V : 59.7°(Wide) ~ 19.9°(Tele)	
Min. Object Distance	0.5m (1.64ft)	
Focus Control	Manual	
Lens Type	DC auto iris	
Mount Type	Board type	
OPERATIONAL		
On Screen Display	English, Chinese, Korean, Japanese, German, Italian, French, Spanish, Russian, Czech, Polish, Romanian, Serbian, Swedish, Danish, Turkish, Portuguese	
Camera Title	Off / On (Displayed 15 characters)	
Day & Night	Auto (Electrical) / Color / B/W	
Backlight Compensation	Off / User BLC / HLC	
Contrast Enhancement	SSDR (Off / On)	
Digital Noise Reduction	SSNR IV (Off / On)	
Defog	Off / Auto / Manual	
Purple Fringe Reduction	Off / Low / Middle / High	
Digital Image Stabilization	Off / On	
Tampering	Off / On	
Motion Detection	Off / On	
Privacy Masking	Off / On (24 programmable zones with 4 points polygonal masking)	
Gain Control	Off / Low / Middle / High	
White Balance	ATW / Outdoor / Indoor / Manual / AWC / Mercury (1,800K° ~ 10,500K°)	
Electronic Shutter Speed	1sec ~ 1/12,000sec	
Digital Zoom	Off / On (1x ~ 16x)	
Reverse	Off / H-Rev / V-Rev / HV-Rev	
Profile	Basic, Day & Night, Backlight, ITS, Indoor, User	
Communication	Coaxial control (SPC-300 compatible)	
Protocol	Coax : Pelco-C (Coaxitron)	
ENVIRONMENTAL		
Operating Temperature / Humidity	-10°C ~ +55°C (+14°F ~ +131°F) / Less than 90% RH	
ELECTRICAL		
Input Voltage / Current	Dual (24V AC & 12V DC ±10%)	
Power Consumption	Max. 3.5W	
MECHANICAL		
Color / Material	Ivory / Aluminum, Plastic	
Dimensions (WxH)	Ø119.8 x 101.8mm (Ø4.72" x 4.01")	
Weight	520g (1.15 lb)	

* The latest product information / specification can be found at www.samsungsecurity.com

1000TVL (1280H) Small Dome Camera

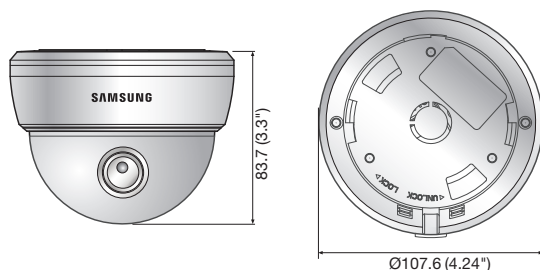


Key Features

- High resolution of 1000TV lines (Color), 1000TV lines (B/W)
- Min. illumination 0.09Lux@F1.8, 50IRE, 0.04Lux@F1.8, 30IRE
- Built-in fixed lens (6mm)
- SDDR, SSSNRIV, Defog
- Coax : Pelco-C (Coaxitron), 12V DC

Dimensions

Unit : mm (inch)



Accessories (Optional)



SBP-300WM0

	SCD-5030N	SCD-5030P
VIDEO		
Imaging Device	1/3" 1.3M CMOS	
Total Pixels	1,312(H) x 1,069(V)	
Effective Pixels	1,305(H) x 1,049(V)	
Scanning System	Progressive scan	
Synchronization	Internal	
Frequency	H : 15.734KHz / V : 59.94Hz	H : 15.625KHz / V : 50Hz
Horizontal Resolution	Color : 1000TV lines, B/W : 1000TV lines	
Min. Illumination	0.09Lux (F1.8, 50IRE), 0.002Lux (1sec, F1.8, 50IRE) 0.04Lux (F1.8, 30IRE), 0.001Lux (1sec, F1.8, 30IRE)	
S / N Ratio	52dB (AGC off, Weight on)	
Video Output	CVBS : 1.0Vpp / 75Ω composite	
LENS		
Focal Length (Zoom Ratio)	6mm (Fixed)	
Max. Aperture Ratio	F1.8	
Angular Field of View	H : 46.5° / V : 34.5° / D : 59.3°	
Min. Object Distance	0.2m (0.66ft)	
Lens Type	Fixed	
Mount Type	Board type	
PAN / TILT / ROTATE		
Pan Range	0° ~ 352°	
Tilt Range	0° ~ 75°	
Rotate Range	0° ~ 348°	
OPERATIONAL		
On Screen Display	English, Chinese, Korean, Japanese, German, Italian, French, Spanish, Russian, Czech, Polish, Romanian, Serbian, Swedish, Danish, Turkish, Portuguese	
Camera Title	Off / On (Displayed 15 characters)	
Day & Night	Auto (Electrical) / Color / B/W	
Backlight Compensation	Off / User BLC / HLC	
Contrast Enhancement	SSDR (Off / On)	
Digital Noise Reduction	SSNR IV (Off / On)	
Defog	Off / Auto / Manual	
Purple Fringe Reduction	Off / Low / Middle / High	
Digital Image Stabilization	Off / On	
Tampering	Off / On	
Motion Detection	Off / On	
Privacy Masking	Off / On (24 programmable zones with 4 points polygonal masking)	
Gain Control	Off / Low / Middle / High	
White Balance	ATW / Outdoor / Indoor / Manual / AWC / Mercury (1,800K° ~ 10,500K°)	
Electronic Shutter Speed	1sec ~ 1/12,000sec	
Digital Zoom	Off / On (1x ~ 16x)	
Reverse	Off / H-Rev / V-Rev / HV-Rev	
Profile	Basic, Day & Night, Backlight, ITS, Indoor, User	
Communication	Coaxial control (SPC-300 compatible)	
Protocol	Coax : Pelco-C (Coaxitron)	
ENVIRONMENTAL		
Operating Temperature / Humidity	-10°C ~ +55°C (+14°F ~ +131°F) / Less than 90% RH	
ELECTRICAL		
Input Voltage / Current	12V DC ±10%	
Power Consumption	TBD	
MECHANICAL		
Color / Material	Ivory / Plastic	
Dimensions (WxH)	Ø107.6 x 83.7mm (Ø4.24" x 3.3")	
Weight	TBD	

* The latest product information / specification can be found at www.samsungsecurity.com

1000TVL (1280H) Small Dome Camera

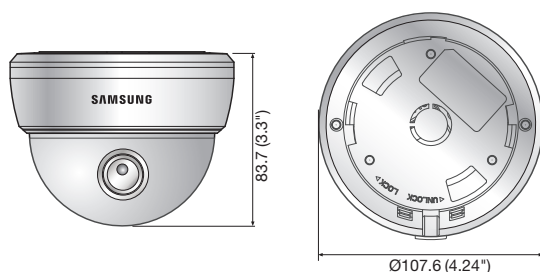


Key Features

- High resolution of 1000TV lines (Color), 1000TV lines (B/W)
- Min. illumination 0.09Lux@F1.8, 50IRE, 0.04Lux@F1.8, 30IRE
- Built-in fixed lens (3.6mm)
- SSSDR, SSSNRIV, Defog
- Coax : Pelco-C (Coaxitron), 12V DC

Dimensions

Unit : mm (inch)



Accessories (Optional)



SBP-300WM0

	SCD-5020N	SCD-5020P
VIDEO		
Imaging Device	1/3" 1.3M CMOS	
Total Pixels	1,312(H) x 1,069(V)	
Effective Pixels	1,305(H) x 1,049(V)	
Scanning System	Progressive scan	
Synchronization	Internal	
Frequency	H : 15.734KHz / V : 59.94Hz	H : 15.625KHz / V : 50Hz
Horizontal Resolution	Color : 1000TV lines, B/W : 1000TV lines	
Min. Illumination	0.09Lux (F1.8, 50IRE), 0.002Lux (1sec, F1.8, 50IRE) 0.04Lux (F1.8, 30IRE), 0.001Lux (1sec, F1.8, 30IRE)	
S / N Ratio	52dB (AGC off, Weight on)	
Video Output	CVBS : 1.0Vpp / 75Ω composite	
LENS		
Focal Length (Zoom Ratio)	3.6mm (Fixed)	
Max. Aperture Ratio	F1.8	
Angular Field of View	H : 78° / V : 62.5° / D : 100°	
Min. Object Distance	0.2m (0.66ft)	
Lens Type	Fixed	
Mount Type	Board type	
PAN / TILT / ROTATE		
Pan Range	0° ~ 352°	
Tilt Range	0° ~ 75°	
Rotate Range	0° ~ 348°	
OPERATIONAL		
On Screen Display	English, Chinese, Korean, Japanese, German, Italian, French, Spanish, Russian, Czech, Polish, Romanian, Serbian, Swedish, Danish, Turkish, Portuguese	
Camera Title	Off / On (Displayed 15 characters)	
Day & Night	Auto (Electrical) / Color / B/W	
Backlight Compensation	Off / User BLC / HLC	
Contrast Enhancement	SSDR (Off / On)	
Digital Noise Reduction	SSNR IV (Off / On)	
Defog	Off / Auto / Manual	
Purple Fringe Reduction	Off / Low / Middle / High	
Digital Image Stabilization	Off / On	
Tampering	Off / On	
Motion Detection	Off / On	
Privacy Masking	Off / On (24 programmable zones with 4 points polygonal masking)	
Gain Control	Off / Low / Middle / High	
White Balance	ATW / Outdoor / Indoor / Manual / AWC / Mercury (1,800K° ~ 10,500K°)	
Electronic Shutter Speed	1sec ~ 1/12,000sec	
Digital Zoom	Off / On (1x ~ 16x)	
Reverse	Off / H-Rev / V-Rev / HV-Rev	
Profile	Basic, Day & Night, Backlight, ITS, Indoor, User	
Communication	Coaxial control (SPC-300 compatible)	
Protocol	Coax : Pelco-C (Coaxitron)	
ENVIRONMENTAL		
Operating Temperature / Humidity	-10°C ~ +55°C (+14°F ~ +131°F) / Less than 90% RH	
ELECTRICAL		
Input Voltage / Current	12V DC ±10%	
Power Consumption	TBD	
MECHANICAL		
Color / Material	Ivory / Plastic	
Dimensions (WxH)	Ø107.6 x 83.7mm (Ø4.24" x 3.3")	
Weight	TBD	

* The latest product information / specification can be found at www.samsungsecurity.com

SCD-5083R

1000TVL (1280H) WDR Varifocal IR Dome Camera

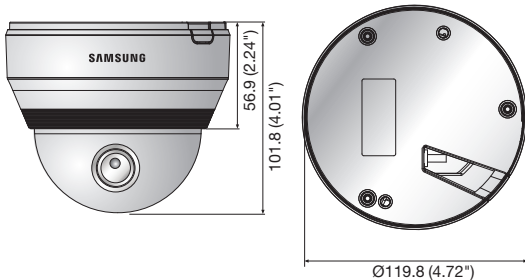


Key Features

- High resolution of 1000TV lines (Color), 1000TV lines (B/W)
- Min. illumination 0Lux (IR LED on), IR distance 30m
- 3.3x varifocal lens (3 ~ 10mm)
- 120dB WDR, Day & Night (ICR)
- SSSDR, SSSNRIV, Defog, Intelligent video analytics
- Coax : Pelco-C (Coaxitron), Dual power

Dimensions

Unit : mm (inch)



Accessories (Optional)



SBP-301HM4 SBP-300LM SBP-300CM SBP-300WM1 SBP-300WM SBP-300B SBP-300PM SBP-300KM

	SCD-5083RN	SCD-5083RP
VIDEO		
Imaging Device	1/3" 1.3M CMOS	
Total Pixels	1,312(H) x 1,069(V)	
Effective Pixels	1,305(H) x 1,049(V)	
Scanning System	Progressive scan	
Synchronization	Internal	
Frequency	H : 15.734KHz / V : 59.94Hz	H : 15.625KHz / V : 50Hz
Horizontal Resolution	Color : 1000TV lines, B/W : 1000TV lines	
Min. Illumination	Color : 0.05Lux (F1.4, 50IRE), 0.001Lux (1sec, F1.4, 50IRE), 0.02Lux (F1.4, 30IRE), 0.0006Lux (1sec, F1.4, 30IRE) B/W : 0Lux (IR LED on)	
S / N Ratio	52dB (AGC off, Weight on)	
Video Output	CVBS : 1.0 Vpp / 75Ω composite	
LENS		
Focal Length (Zoom Ratio)	3 ~ 10mm (3.3x) varifocal	
Max. Aperture Ratio	F1.4	
Angular Field of View	H : 82.0°(Wide) ~ 26.5°(Tele) / V : 59.7°(Wide) ~ 19.9°(Tele)	
Min. Object Distance	0.5m (1.64ft)	
Focus Control	Manual	
Lens Type	DC auto iris	
Mount Type	Board type	
OPERATIONAL		
On Screen Display	English, Chinese, Korean, Japanese, German, Italian, French, Spanish, Russian, Czech, Polish, Romanian, Serbian, Swedish, Danish, Turkish, Portuguese	
Camera Title	Off / On (Displayed 15 characters)	
Day & Night	Auto (ICR) / External / Color / B/W	
Anti IR Saturation	Top / Bottom / Left / Right	
Backlight Compensation	Off / User BLC / HLC / WDR	
Wide Dynamic Range	120dB	
Contrast Enhancement	SSDR (Off / On)	
Digital Noise Reduction	SSNR IV (Off / On)	
Defog	Off / Auto / Manual	
Purple Fringe Reduction	Off / Low / Middle / High	
Digital Image Stabilization	Off / On	
Tampering	Off / On	
Motion Detection	Off / On	
Intelligent Video Analytics	Fence, (Dis)Appear, Counting (Off / On)	
Privacy Masking	Off / On (24 programmable zones with 4 points polygonal masking)	
Gain Control	Off / Low / Middle / High	
White Balance	ATW / Outdoor / Indoor / Manual / AWC / Mercury (1,800K° ~ 10,500K°)	
Electronic Shutter Speed	1sec ~ 1/12,000sec	
Digital Zoom	Off / On (1x ~ 16x)	
Reverse	Off / H-Rev / V-Rev / HV-Rev	
Profile	Basic, Day & Night, Backlight, ITS, Indoor, User	
Alarm	1 Out	
Communication	Coaxial control (SPC-300 compatible)	
Protocol	Coax : Pelco-C (Coaxitron)	
IR Distance	30m (98.43ft) (IR LED 12ea)	
ENVIRONMENTAL		
Operating Temperature / Humidity	-10°C ~ +55°C (+14°F ~ +131°F) / Less than 90% RH	
ELECTRICAL		
Input Voltage / Current	Dual (24V AC & 12V DC ±10%)	
Power Consumption	Max. 6.0W	
MECHANICAL		
Color / Material	Ivory / Aluminum, Plastic	
Dimensions (WxH)	Ø119.8 x 101.8mm (Ø4.72" x 4.01")	
Weight	550g (1.21 lb)	

* The latest product information / specification can be found at www.samsungsecurity.com

SCV-5083

1000TVL (1280H) WDR Vandal-Resistant Dome Camera

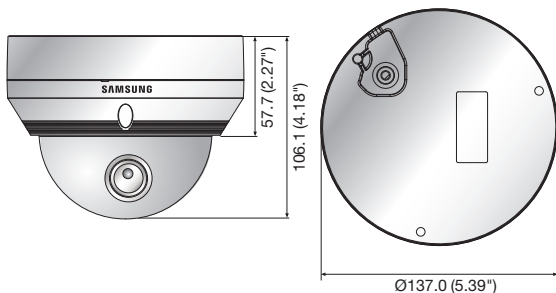


Key Features

- High resolution of 1000TV lines (Color), 1000TV lines (B/W)
- 0.03Lux@F1.2, 50IRE (Color), 0.003Lux@F1.2 50IRE (B/W)
0.01Lux@F1.2, 30IRE (Color), 0.001Lux@F1.2 30IRE (B/W)
- 3.8x varifocal lens (2.8 ~ 10.5mm)
- 120dB WDR, Day & Night (ICR)
- SSSDR, SSSNRIV, Defog, Intelligent video analytics
- IP66, IK10, Coax : Pelco-C (Coaxitron), Dual power

Dimensions

Unit : mm (inch)



Accessories (Optional)



SBP-301HM2 SBP-300LM SBP-300CM SBP-300WM1 SBP-300WM SBP-300B SBP-300PM SBP-300KM

	SCV-5083N	SCV-5083P
VIDEO		
Imaging Device	1/3" 1.3M CMOS	
Total Pixels	1,312(H) x 1,069(V)	
Effective Pixels	1,305(H) x 1,049(V)	
Scanning System	Progressive scan	
Synchronization	Internal	
Frequency	H : 15.734KHz / V : 59.94Hz	H : 15.625KHz / V : 50Hz
Horizontal Resolution	Color : 1000TV lines, B/W : 1000TV lines	
Min. Illumination	Color : 0.03Lux (F1.2, 50IRE), 0.001Lux (1sec, F1.2, 50IRE), 0.01Lux (F1.2, 30IRE), 0.0003Lux (1sec, F1.2, 30IRE) B/W : 0.003Lux (F1.2, 50IRE), 0.0001Lux (1sec, F1.2, 50IRE), 0.001Lux (F1.2, 30IRE), 0.00003Lux (1sec, F1.2, 30IRE)	
S / N Ratio	52dB (AGC off, Weight on)	
Video Output	CVBS : 1.0 Vpp / 75Ω composite	
LENS		
Focal Length (Zoom Ratio)	2.8 ~ 10.5mm (3.8x) varifocal	
Max. Aperture Ratio	F1.2	
Angular Field of View	H : 91.5°(Wide) ~ 27.7°(Tele) / V : 68.3°(Wide) ~ 20.8°(Tele)	
Min. Object Distance	0.5m (1.64ft)	
Focus Control	Manual	
Lens Type	DC auto iris	
Mount Type	Board type	
OPERATIONAL		
On Screen Display	English, Chinese, Korean, Japanese, German, Italian, French, Spanish, Russian, Czech, Polish, Romanian, Serbian, Swedish, Danish, Turkish, Portuguese	
Camera Title	Off / On (Displayed 15 characters)	
Day & Night	Auto (ICR) / External / Color / B/W	
Backlight Compensation	Off / User BLC / HLC / WDR	
Wide Dynamic Range	120dB	
Contrast Enhancement	SSDR (Off / On)	
Digital Noise Reduction	SSNR IV (Off / On)	
Defog	Off / Auto / Manual	
Purple Fringe Reduction	Off / Low / Middle / High	
Digital Image Stabilization	Off / On	
Tampering	Off / On	
Motion Detection	Off / On	
Intelligent Video Analytics	Fence, (Dis)Appear, Counting (Off / On)	
Privacy Masking	Off / On (24 programmable zones with 4 points polygonal masking)	
Gain Control	Off / Low / Middle / High	
White Balance	ATW / Outdoor / Indoor / Manual / AWC / Mercury (1,800K° ~ 10,500K°)	
Electronic Shutter Speed	1sec ~ 1/12,000sec	
Digital Zoom	Off / On (1x ~ 16x)	
Reverse	Off / H-Rev / V-Rev / HV-Rev	
Profile	Basic, Day & Night, Backlight, ITS, Indoor, User	
Alarm	1 Out	
Communication	Coaxial control (SPC-300 compatible)	
Protocol	Coax : Pelco-C (Coaxitron)	
ENVIRONMENTAL		
Operating Temperature / Humidity	-10°C ~ +55°C (+14°F ~ +131°F) / Less than 90% RH	
Ingress Protection	IP66	
Vandal Resistance	IK10	
ELECTRICAL		
Input Voltage / Current	Dual (24V AC & 12V DC ±10%)	
Power Consumption	Max. 5.6W	
MECHANICAL		
Color / Material	Ivory / ALDC	
Dimensions (WxH)	Ø137.0 x 106.1mm (Ø5.39" x 4.18")	
Weight	720g (1.59 lb)	

* The latest product information / specification can be found at www.samsungsecurity.com

SCV-5083R

1000TVL (1280H) WDR Vandal-Resistant IR Dome Camera

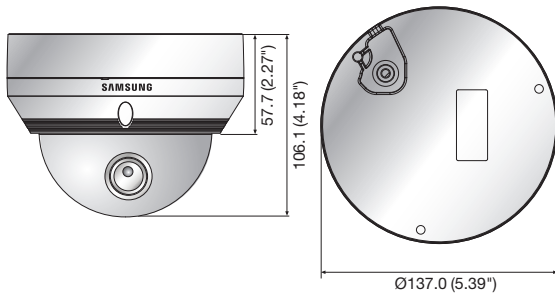


Key Features

- High resolution of 1000TV lines (Color), 1000TV lines (B/W)
- Min. Illumination 0Lux (IR LED on), IR distance 30m
- 3.3x varifocal lens (3 ~ 10mm)
- 120dB WDR, Day & Night (ICR)
- SSSDR, SSSNRIV, Defog, Intelligent video analytics
- IP66, IK10, Coax : Pelco-C (Coaxitron), RS-485, Dual power

Dimensions

Unit : mm (inch)



Accessories (Optional)



SBP-301HM2 SBP-300LM SBP-300CM SBP-300WM1 SBP-300WM SBP-300B SBP-300PM SBP-300KM

	SCV-5083RN	SCV-5083RP
VIDEO		
Imaging Device	1/3" 1.3M CMOS	
Total Pixels	1,312(H) x 1,069(V)	
Effective Pixels	1,305(H) x 1,049(V)	
Scanning System	Progressive scan	
Synchronization	Internal	
Frequency	H : 15.734KHz / V : 59.94Hz	H : 15.625KHz / V : 50Hz
Horizontal Resolution	Color : 1000TV lines, B/W : 1000TV lines	
Min. Illumination	Color : 0.05Lux (F1.4, 50IRE), 0.001Lux (1sec, F1.4, 50IRE), 0.02Lux (F1.4, 30IRE), 0.0006Lux (1sec, F1.4, 30IRE) B/W : 0Lux (IR LED on)	
S / N Ratio	52dB (AGC off, Weight on)	
Video Output	CVBS : 1.0 Vpp / 75Ω composite	
LENS		
Focal Length (Zoom Ratio)	3 ~ 10mm (3.3x) varifocal	
Max. Aperture Ratio	F1.4	
Angular Field of View	H : 82.0°(Wide) ~ 26.5°(Tele) / V : 59.7°(Wide) ~ 19.9°(Tele)	
Min. Object Distance	0.5m (1.64ft)	
Focus Control	Manual	
Lens Type	DC auto iris	
Mount Type	Board type	
OPERATIONAL		
On Screen Display	English, Chinese, Korean, Japanese, German, Italian, French, Spanish, Russian, Czech, Polish, Romanian, Serbian, Swedish, Danish, Turkish, Portuguese	
Camera Title	Off / On (Displayed 15 characters)	
Day & Night	Auto (ICR) / External / Color / B/W	
Anti IR Saturation	Top / Bottom / Left / Right	
Backlight Compensation	Off / User BLC / HLC / WDR	
Wide Dynamic Range	120dB	
Contrast Enhancement	SSDR (Off / On)	
Digital Noise Reduction	SSNR IV (Off / On)	
Defog	Off / Auto / Manual	
Purple Fringe Reduction	Off / Low / Middle / High	
Digital Image Stabilization	Off / On	
Tampering	Off / On	
Motion Detection	Off / On	
Intelligent Video Analytics	Fence, (Dis)Appear, Counting (Off / On)	
Privacy Masking	Off / On (24 programmable zones with 4 points polygonal masking)	
Gain Control	Off / Low / Middle / High	
White Balance	ATW / Outdoor / Indoor / Manual / AWC / Mercury (1,800K° ~ 10,500K°)	
Electronic Shutter Speed	1sec ~ 1/12,000sec	
Digital Zoom	Off / On (1x ~ 16x)	
Reverse	Off / H-Rev / V-Rev / HV-Rev	
Profile	Basic, Day & Night, Backlight, ITS, Indoor, User	
Alarm	1 Out	
Communication	Coaxial control (SPC-300 compatible), RS-485 Coax : Pelco-C (Coaxitron)	
Protocol	RS-485 : Samsung-T/E, Pelco-D/P, Panasonic, Bosch, Honeywell, Vicon, AD, GE	
IR Distance	30m (98.43ft) (IR LED 12ea)	
ENVIRONMENTAL		
Operating Temperature / Humidity	-10°C ~ +55°C (+14°F ~ +131°F) / Less than 90% RH	
Ingress Protection	IP66	
Vandal Resistance	IK10	
ELECTRICAL		
Input Voltage / Current	Dual (24V AC & 12V DC ±10%)	
Power Consumption	Max. 6.0W	
MECHANICAL		
Color / Material	Ivory / Aluminum	
Dimensions (WxH)	Ø137.0 x 106.1mm (Ø5.39" x 4.18")	
Weight	750g (1.65 lb)	

* The latest product information / specification can be found at www.samsungsecurity.com

SRD-1676D

16CH 1280H Real-time Coaxial DVR

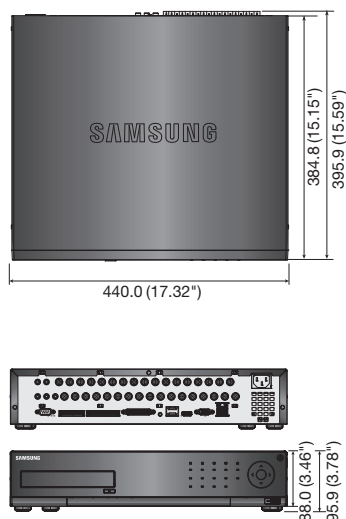


Key Features

- 16CH 1280H real-time DVR
- Up to 480(NTSC) / 400(PAL)fps recording rate
- HDMI / VGA video output
- 16CH audio inputs / 1CH audio output
- Max. 4 internal HDDs
- PTZ control via coaxial cable (Samsung CCVC, Pelco-C)
- DVD-RW, Smart phone support (Android / iOS)
- Accurate still image (De-Interlace support each channel)
- Enhanced Network Bandwidth up to 32Mbps

Dimensions

Unit : mm (inch)



		SRD-1676D
DISPLAY		
Video	Inputs	16 Composite video 0.5-1 Vpp, 75 ohm automatic termination
	Resolution	NTSC : 1280 x 480, 720 x 480 / PAL : 1280 x 576, 720 x 576
Live	Frame Rate	NTSC : 480fps / PAL : 400fps
	Resolution	NTSC : 1280 x 480, 720 x 480 / PAL : 1280 x 576, 720 x 576
	Multi Screen Display	1 / 4 / 7 / 9 / 13 / 16 / 16A / Sequence / PIP
PERFORMANCE		
Operating System	Embedded	Linux
	Compression	H.264
Recording	Record Rate	NTSC : Up to 480fps@1280 x 480 / PAL : Up to 400fps@1280 x 576 NTSC : Up to 480fps@704 x 480 / PAL : Up to 400fps@704 x 576 NTSC : Up to 480fps@704 x 240 / PAL : Up to 400fps@704 x 288 NTSC : Up to 480fps@352 x 240 / PAL : Up to 400fps@352 x 288
	Mode	NTSC : Manual, Schedule (Continuous / Event), Event (Pre / Post), Time lapse (1 ~ 30 fps) PAL : Manual, Schedule (Continuous / Event), Event (Pre / Post), Time lapse (1 ~ 25fps)
	Event	Video loss, Motion (Level 1 ~ 10), Alarm, Tampering (Level 1 ~ 3)
	Overwrite Modes	Selectable (Stop / Continuous)
	Pre-alarm	Up to 30sec (5, 10, 20, 30sec)
	Post-alarm	Up to 6hour (5, 10, 20, 30sec, 1, 3, 5, 10, 20min, 1, 2, 3, 4, 5, 6hour)
Search & Playback	Search Mode	Date/Time, Event, Back up, POS, Motion (*All search include preview function)
	Playback Function	Fast forward / backward (2x, 4x, 8x, 16x, 32x, 64x) *Backward play with i-frame only Slow forward / backward (1/2x, 1/4x, 1/8x) Step forward / backward *Backward play with i-frame only
Network (IPv4)	Transmission Speed	4CIF / 2CIF / CIF (NTSC : 120 / 240 / 480fps, PAL : 100 / 200 / 400fps)
	Bandwidth	Up to 32Mbps
	Bandwidth Control	Selectable
	Stream	H.264 (4CIF / 2CIF / CIF selectable)
	Max. Remote Users	Search 3 / Live unicast 10 / Live multicast 20
Smart Phone	Protocol Support	TCP/IP, DHCP, PPPoE, SMTP, NTP, HTTP, HTTPS, DDNS, RTP, RTSP, SNMP
	Monitoring	SmartViewer, Webviewer, SSM (CMS)
	Platform	Android, iOS
Storage	Internal HDD	RTP, RTSP, HTTP, CGI
	External (e-SATA Interface)	Live 2, Search 1
Security	DVD Writer (Back up)	Up to 4 SATA HDDs
	USB (Back up)	2 External SATA ports (*Expansion bay, Model : SVS-5R/5E)
	File Format (Back up)	Yes
	Password Protection	2 USB ports
INTERFACE	Data Authentication	BU (DVR player), EXE (Include player), AVI
	Watermark	1 Admin, 10 Group, 10 User per 1 group
Monitors	VGA	Data Authentication
	HDMI	Watermark
	Digital spot (2CH)	1 VGA (1280 x 720, 1280 x 1024, 1920 x 1080)
	Loop Outputs	1 HDMI (1280 x 720, 1280 x 1024, 1920 x 1080)
Audio	Inputs / Output	Digital spot (2CH) *Included OSD on screen, multi mode support (1CH)
	Compression	Loop Outputs
	Sampling Rate	16CH
Alarm	Inputs / Output	16CH line in (Built-in 4CH, option : audio extension cable) / 1CH line out
	Remote Notification	Compression
Connections	Ethernet	G.711
	Serial Interface	8KHz
	USB	Terminal 16 inputs (NO/NC) / Terminal 4 relay outputs (NO/NC), Rating : 30V DC / 2A, 250V AC / 0.25A
	eSATA	Notification via e-mail
	Coax Protocol	1 RJ-45 10/100/1000 Base-T
GENERAL	Input Voltage / Current	1 RS-232/RS-485 (Full duplex) for PTZ, Samsung system keyboard
	Power Consumption	USB 2.0, 2 ports
	Operating Temperature	eSATA 2 External SATA ports
Environmental	Operating Humidity	Application Support
	Dimensions (WxHxD)	Mouse, Remote controller
Mechanical	Weight (With hard disks)	RS-485 Protocol
	Rack Mountable	Samsung-T/E, Pelco-D/P, Panasonic, Phillips, AD, DIAMOND, ERNA, KALATEL, VCL TP, VICON, ELMO, GE
Language	English, French, German, Spanish, Italian, Russian, Polish, Czech, Turkish, Netherlands, Portuguese, Swedish, Danish, Rumania, Serbia, Croatia, Hungary, Greek, Finnish, Norwegian, Korean, Japanese, Chinese (Traditional), Thai, Taiwanese (25 Language)	Coax Protocol
		Samsung CCVC, Pelco-C
Electrical	Input Voltage / Current	100 ~ 240V AC ±10%, 50/60Hz, Auto ranging
Environmental	Power Consumption	Max. 60W (With 1x HDD)
	Operating Temperature	+0°C ~ +40°C (+32°F ~ +104°F)
Mechanical	Operating Humidity	20% ~ 85% RH
	Dimensions (WxHxD)	440.0 x 88.0 x 384.8mm (17.32" x 3.46" x 15.15")
Language	Weight (With hard disks)	Approx. 6.6Kg (14.61 lb)
	Rack Mountable	Yes
Language	English, French, German, Spanish, Italian, Russian, Polish, Czech, Turkish, Netherlands, Portuguese, Swedish, Danish, Rumania, Serbia, Croatia, Hungary, Greek, Finnish, Norwegian, Korean, Japanese, Chinese (Traditional), Thai, Taiwanese (25 Language)	

* The latest product information / specification can be found at www.samsungsecurity.com

SRD-1656D

16CH CIF (1280H available) Real-time DVR

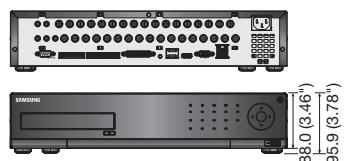
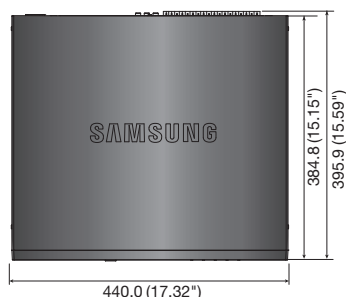


Key Features

- 16CH CIF real-time DVR
- Up to 480(NTSC) / 400(PAL)fps recording rate
- HDMI / VGA video output
- 16CH audio inputs / 1CH audio output
- Max. 4 internal HDDs
- PTZ control via coaxial cable (Samsung CCVC, Pelco-C)
- DVD-RW, Smart phone support (Android / iOS)
- Accurate still image (De-Interlace support each channel)
- Enhanced Network Bandwidth up to 32Mbps

Dimensions

Unit : mm (inch)



		SRD-1656D
DISPLAY		
Video	Inputs	16 Composite video 0.5-1 Vpp, 75 ohm automatic termination
	Resolution	NTSC : 1280 x 480, 720 x 480 / PAL : 1280 x 576, 720 x 576
Live	Frame Rate	NTSC : 480fps / PAL : 400fps
	Resolution	NTSC : 1280 x 480, 720 x 480 / PAL : 1280 x 576, 720 x 576
	Multi Screen Display	1 / 4 / 7 / 9 / 13 / 16 / 16A / Sequence / PIP
PERFORMANCE		
Operating System	Embedded	Linux
	Compression	H.264
Recording	Record Rate	NTSC : Up to 120fps@1280 x 480 / PAL : Up to 100fps@1280 x 576 NTSC : Up to 120fps@704 x 480 / PAL : Up to 100fps@704 x 576 NTSC : Up to 240fps@704 x 240 / PAL : Up to 200fps@704 x 288 NTSC : Up to 480fps@352 x 240 / PAL : Up to 400fps@352 x 288
	Mode	NTSC : Manual, Schedule (Continuous / Event), Event (Pre / Post), Time lapse (1 ~ 30 fps) PAL : Manual, Schedule (Continuous / Event), Event (Pre / Post), Time lapse (1 ~ 25fps)
	Event	Video loss, Motion (Level 1 ~ 10), Alarm, Tampering (Level 1 ~ 3)
	Overwrite Modes	Selectable (Stop / Continuous)
	Pre-alarm	Up to 30sec (5, 10, 20, 30sec)
	Post-alarm	Up to 6hour (5, 10, 20, 30sec, 1, 3, 5, 10, 20min, 1, 2, 3, 4, 5, 6hour)
Search & Playback	Search Mode	Date/Time, Event, Back up, POS, Motion (*All search include preview function)
	Playback Function	Fast forward / backward (2x, 4x, 8x, 16x, 32x, 64x) *Backward play with i-frame only Slow forward / backward (1/2x, 1/4x, 1/8x) Step forward / backward *Backward play with i-frame only
Network (IPv4)	Transmission Speed	4CIF / 2CIF / CIF (NTSC : 120 / 240 / 480fps, PAL : 100 / 200 / 400fps)
	Bandwidth	Up to 32Mbps
	Bandwidth Control	Selectable
	Stream	H.264 (4CIF / 2CIF / CIF selectable)
	Max. Remote Users	Search 3 / Live unicast 10 / Live multicast 20
Smart Phone	Protocol Support	TCP/IP, DHCP, PPPoE, SMTP, NTP, HTTP, HTTPS, DDNS, RTP, RTSP, SNMP
	Monitoring	SmartViewer, Webviewer, SSM (CMS)
	Platform	Android, iOS
Storage	Internal HDD	Up to 4 SATA HDDs
	External (e-SATA Interface)	2 External SATA ports (*Expansion bay, Model : SVS-5R/5E)
Security	DVD Writer (Back up)	Yes
	USB (Back up)	2 USB ports
	File Format (Back up)	BU (DVR player), EXE (Include player), AVI
INTERFACE	Password Protection	1 Admin, 10 Group, 10 User per 1 group
	Data Authentication	Watermark
Monitors	VGA	1 VGA (1280 x 720, 1280 x 1024, 1920 x 1080)
	HDMI	1 HDMI (1280 x 720, 1280 x 1024, 1920 x 1080)
	Digital Composite	1 Digital Composite (1280 x 720, 1280 x 1024, 1920 x 1080)
	Loop Outputs	Digital spot (2CH) *Included OSD on screen, multi mode support (1CH) 16CH
Audio	Inputs / Output	16CH line in (Built-in 4CH, option : audio extension cable) / 1CH line out
	Compression	G.711
	Sampling Rate	8KHz
Alarm	Inputs / Output	Terminal 16 inputs (NO/NC) / Terminal 4 relay outputs (NO/NC), Rating : 30V DC / 2A, 250V AC / 0.25A
	Remote Notification	Notification via e-mail
Connections	Ethernet	1 RJ-45 10/100/1000 Base-T
	Serial Interface	RS-232/RS-485 (Full duplex) for PTZ, Samsung system keyboard
	USB	USB 2.0, 2 ports
	eSATA	2 External SATA ports
	Application Support	Mouse, Remote controller
GENERAL	RS-485 Protocol	Samsung-T/E, Pelco-D/P, Panasonic, Phillips, AD, DIAMOND, ERNA, KALATEL, VCL TP, VICON, ELMO, GE
	Coax Protocol	Samsung CCVC, Pelco-C
	Electrical	Input Voltage / Current 100 ~ 240V AC ±10%, 50/60Hz, Auto ranging Power Consumption Max. 60W (With 1x HDD)
Environmental	Operating Temperature	+0°C ~ +40°C (+32°F ~ +104°F)
	Operating Humidity	20% ~ 85% RH
Mechanical	Dimensions (WxHxD)	440.0 x 88.0 x 384.8mm (17.32" x 3.46" x 15.15")
	Weight (With hard disks)	Approx. 6.6Kg (14.61 lb)
Language	Rack Mountable	Yes
	Language	English, French, German, Spanish, Italian, Russian, Polish, Czech, Turkish, Netherlands, Portuguese, Swedish, Danish, Rumania, Serbia, Croatia, Hungary, Greek, Finnish, Norwegian, Korean, Japanese, Chinese (Traditional), Thai, Taiwanese (25 Language)

* The latest product information / specification can be found at www.samsungsecurity.com

SRD-876D

8CH 1280H Real-time Coaxial DVR

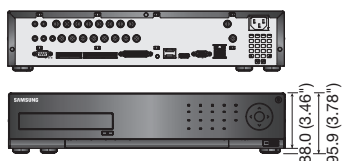
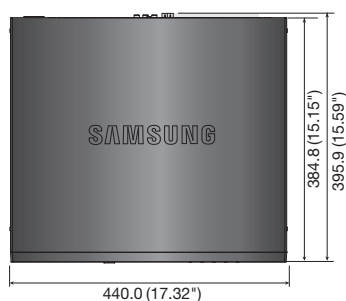


Key Features

- 8CH 1280H real-time DVR
- Up to 240(NTSC) / 200(PAL)fps recording rate
- HDMI / VGA video output
- 8CH audio inputs / 1 CH audio output
- Max. 4 internal HDDs
- PTZ control via coaxial cable (Samsung CCVC, Pelco-C)
- DVD-RW, Smart phone support (Android / iOS)
- Accurate still image (De-Interlace support each channel)
- Enhanced Network Bandwidth up to 32Mbps

Dimensions

Unit : mm (inch)



		SRD-876D
DISPLAY		
Video	Inputs	8 Composite video 0.5-1 Vpp, 75 ohm automatic termination
	Resolution	NTSC : 1280 x 480, 720 x 480 / PAL : 1280 x 576, 720 x 576
Live	Frame Rate	NTSC : 240fps / PAL : 200fps
	Resolution	NTSC : 1280 x 480, 720 x 480 / PAL : 1280 x 576, 720 x 576
	Multi Screen Display	1 / 4 / 6 / 8 / Sequence / PIP
PERFORMANCE		
Operating System	Embedded	Linux
	Compression	H.264
Recording	Record Rate	NTSC : Up to 240fps@1280 x 480 / PAL : Up to 200fps@1280 x 576 NTSC : Up to 240fps@704 x 480 / PAL : Up to 200fps@704 x 576 NTSC : Up to 240fps@704 x 240 / PAL : Up to 200fps@704 x 288 NTSC : Up to 240fps@352 x 240 / PAL : Up to 200fps@352 x 288
	Mode	NTSC : Manual, Schedule (Continuous / Event), Event (Pre / Post), Time lapse (1 ~ 30 fps) PAL : Manual, Schedule (Continuous / Event), Event (Pre / Post), Time lapse (1 ~ 25fps)
	Event	Video loss, Motion (Level 1 ~ 10), Alarm, Tampering (Level 1 ~ 3)
	Overwrite Modes	Selectable (Stop / Continuous)
	Pre-alarm	Up to 30sec (5, 10, 20, 30sec)
	Post-alarm	Up to 6hour (5, 10, 20, 30sec, 1, 3, 5, 10, 20min, 1, 2, 3, 4, 5, 6hour)
Search & Playback	Search Mode	Date/Time, Event, Back up, POS, Motion (*All search include preview function)
	Playback Function	Fast forward / backward (2x, 4x, 8x, 16x, 32x, 64x) *Backward play with i-frame only Slow forward / backward (1/2x, 1/4x, 1/8x) Step forward / backward *Backward play with i-frame only
Network (IPv4)	Transmission Speed	4CIF / 2CIF / CIF (NTSC : 120 / 240 / 480fps, PAL : 100 / 200 / 400fps)
	Bandwidth	Up to 32Mbps
	Bandwidth Control	Selectable
	Stream	H.264 (4CIF / 2CIF / CIF selectable)
	Max. Remote Users	Search 3 / Live unicast 10 / Live multicast 20
Smart Phone	Protocol Support	TCP/IP, DHCP, PPPoE, SMTP, NTP, HTTP, HTTPS, DDNS, RTP, RTSP, SNMP
	Monitoring	SmartViewer, Webviewer, SSM (CMS)
	Platform	Android, iOS
Storage	Internal HDD	Up to 4 SATA HDDs
	External (e-SATA Interface)	2 External SATA ports (*Expansion bay, Model : SVS-5R/5E)
Security	DVD Writer (Back up)	Yes
	USB (Back up)	2 USB ports
	File Format (Back up)	BU (DVR player), EXE (Include player), AVI
INTERFACE	Password Protection	1 Admin, 10 Group, 10 User per 1 group
	Data Authentication	Watermark
Monitors	VGA	1 VGA (1280 x 720, 1280 x 1024, 1920 x 1080)
	HDMI	1 HDMI (1280 x 720, 1280 x 1024, 1920 x 1080)
	Spot Composite	Digital spot (2CH) *Included OSD on screen, multi mode support (1CH)
	Loop Outputs	8CH
Audio	Inputs / Output	8CH line in (Built-in 4CH, option : audio extension cable) / 1CH line out
	Compression	G.711
	Sampling Rate	8KHz
Alarm	Inputs / Output	Terminal 8 inputs (NO/NC) / Terminal 4 relay outputs (NO/NC), Rating : 30V DC / 2A, 250V AC / 0.25A
	Remote Notification	Notification via e-mail
Connections	Ethernet	1 RJ-45 10/100/1000 Base-T
	Serial Interface	RS-232/RS-485 (Full duplex) for PTZ, Samsung system keyboard
	USB	USB 2.0, 2 ports
	eSATA	2 External SATA ports
	Application Support	Mouse, Remote controller
GENERAL	RS-485 Protocol	Samsung-T/E, Pelco-D/P, Panasonic, Phillips, AD, DIAMOND, ERNA, KALATEL, VCL TP, VICON, ELMO, GE
	Coax Protocol	Samsung CCVC, Pelco-C
	Electrical	Input Voltage / Current 100 ~ 240V AC ±10%, 50/60Hz, Auto ranging Power Consumption Max. 60W (With 1x HDD)
Environmental	Operating Temperature	+0°C ~ +40°C (+32°F ~ +104°F)
	Operating Humidity	20% ~ 85% RH
Mechanical	Dimensions (WxHxD)	440.0 x 88.0 x 384.8mm (17.32" x 3.46" x 15.15")
	Weight (With hard disks)	Approx. 6.5Kg (14.33 lb)
	Rack Mountable	Yes
Language		English, French, German, Spanish, Italian, Russian, Polish, Czech, Turkish, Netherlands, Portuguese, Swedish, Danish, Rumania, Serbia, Croatia, Hungary, Greek, Finnish, Norwegian, Korean, Japanese, Chinese (Traditional), Thai, Taiwanese (25 Language)

* The latest product information / specification can be found at www.samsungsecurity.com

SRD-476D

4CH 1280H Real-time Coaxial DVR

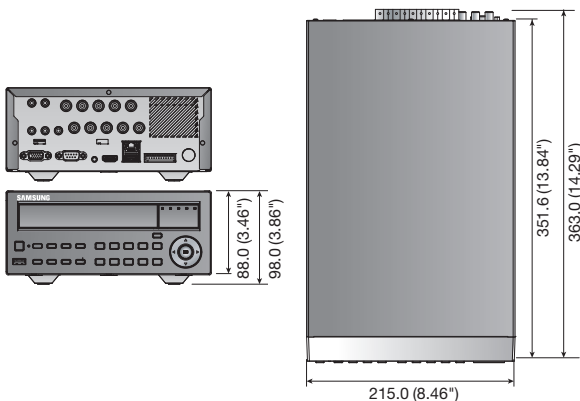


Key Features

- 4CH 1280H real-time DVR
- Up to 120(NTSC) / 100(PAL)fps recording rate
- HDMI / VGA video output
- 4CH audio inputs / 1CH audio output
- Max. 1 internal HDD
- PTZ control via coaxial cable (Samsung CCVC, Pelco-C)
- DVD-RW, Smart phone support (Android / iOS)
- Smart searching, Tampering support

Dimensions

Unit : mm (inch)



		SRD-476D
DISPLAY		
Video	Inputs	4 Composite video 0.5-1 Vpp, 75 ohm automatic termination
	Resolution	NTSC : 1280 x 480, 720 x 480 / PAL : 1280 x 576, 720 x 576
Live	Frame Rate	NTSC : 120fps / PAL : 100fps
	Resolution	NTSC : 1280 x 480, 720 x 480 / PAL : 1280 x 576, 720 x 576
	Multi Screen Display	1 / 4 / Sequence / PIP
PERFORMANCE		
Operating System	Embedded	Linux
	Compression	H.264
Recording	Record Rate	NTSC : Up to 120fps@1280 x 480 / PAL : Up to 100fps@1280 x 576 *Play back 60/50fps NTSC : Up to 120fps@704 x 480 / PAL : Up to 100fps@704 x 576 NTSC : Up to 120fps@704 x 240 / PAL : Up to 100fps@704 x 288 NTSC : Up to 120fps@352 x 240 / PAL : Up to 100fps@352 x 288
	Mode	NTSC : Manual, Schedule (Continuous / Event), Event (Pre / Post), Time lapse (1 ~ 30fps) PAL : Manual, Schedule (Continuous / Event), Event (Pre / Post), Time lapse (1 ~ 25fps)
	Event	Video loss, Motion (Level 1 ~ 10), Alarm, Tampering (Level 1 ~ 3)
	Overwrite Modes	Selectable (Stop / Continuous)
	Pre-alarm	Up to 30sec (5, 10, 20, 30sec)
	Post-alarm	Up to 6hour (5, 10, 20, 30sec, 1, 3, 5, 10, 20min, 1, 2, 3, 4, 5, 6hour)
Search & Playback	Search Mode	Date/Time, Event, Back up, POS, Motion (*All search include preview function)
	Playback Function	Fast forward / backward (2x, 4x, 8x, 16x, 32x, 64x) *Backward play with i-frame only Slow forward / backward (1/2x, 1/4x, 1/8x) Step forward / backward *Backward play with i-frame only
Network (IPv4)	Transmission Speed	4CIF / 2CIF / CIF (NTSC : 120fps, PAL : 100fps)
	Bandwidth	Up to 16Mbps
	Bandwidth Control	Selectable
	Stream	H.264 (4CIF / 2CIF / CIF selectable)
	Max. Remote Users	Search 3 / Live unicast 10 / Live multicast 20
	Protocol Support	TCP/IP, DHCP, PPPoE, SMTP, NTP, HTTP, HTTPS, DDNS, RTP, RTSP, SNMP
Smart Phone	Monitoring	SmartViewer, Webviewer, SSM (CMS)
	Platform	Android, iOS
	Protocol Support	RTP, RTSP, HTTP, CGI
	Max. Remote Users	Live 2, Search 1
Storage	Internal HDD	Up to 1 SATA HDD
	DVD Writer (Back up)	Yes
	USB (Back up)	2 USB ports
	File Format (Back up)	BU (DVR player), EXE (Include player), AVI
Security	Password Protection	1 Admin, 10 Group, 10 User per 1 group
	Data Authentication	Watermark
INTERFACE		
Monitors	VGA	1 VGA (1280 x 720, 1280 x 1024, 1920 x 1080)
	HDMI	1 HDMI (1280 x 720, 1280 x 1024, 1920 x 1080)
	Spot Composite	2CH (Digital spot 1CH / Analog spot 1CH) *Included OSD on screen, Multi mode support
	Loop Outputs	4CH
Audio	Inputs / Output	4CH line in / 1CH line out
	Compression	G.711
	Sampling Rate	8KHz
Alarm	Inputs / Output	Terminal 4 inputs (NO/NC) / Terminal 2 relay outputs (NO/NC), Rating : 30V DC / 2A, 250V AC / 0.25A
	Remote Notification	Notification via e-mail
Connections	Ethernet	1 RJ-45 10/100/1000 Base-T
	Serial Interface	RS-232/RS-485 (Half duplex) for PTZ, Samsung system keyboard
	USB	USB 2.0, 2 ports (Front / Rear)
	Application Support	Mouse, Remote controller
	RS-485 Protocol	Samsung T/E, Pelco-D/P, Panasonic, Phillips, AD, DIAMOND, ERNA, KALATEL, VCL TP, VICON, ELMO, GE
	Coax Protocol	Samsung CCVC, Pelco-C
GENERAL		
Electrical	Input Voltage / Current	12V DC adaptor, 4A, 100 ~ 240V AC, 50/60Hz, 48watt
	Power Consumption	Max. 25W (With 1x HDD)
Environmental	Operating Temperature	+0°C ~ +40°C (+32°F ~ +104°F)
	Operating Humidity	20% ~ 85% RH
Mechanical	Dimensions (WxHxD)	215.0 x 88.0 x 351.6mm (8.46" x 3.46" x 13.84")
	Weight (With hard disks)	Approx. 3.3Kg (7.32 lb)
Language	English, French, German, Spanish, Italian, Russian, Polish, Czech, Turkish, Netherlands, Portuguese, Swedish, Danish, Rumania, Serbia, Croatia, Hungary, Greek, Finnish, Norwegian, Korean, Japanese, Chinese (Traditional), Thai, Taiwanese (25 Language)	

* The latest product information / specification can be found at www.samsungsecurity.com

BEYOND *series*

Beyond Your Expectation



The Eco mark represents Samsung Techwin's will to create environment-friendly products, and indicates that the product satisfies the EU RoHS Directive.

Design and specifications are subject to change without notice.

■ DISTRIBUTED BY



SAMSUNG TECHWIN CO., LTD.

6, Pangyo-ro 319beon-gil, Bundang-gu, Seongnam-si, Gyeonggi-do, SEOUL 463-400 Rep. of KOREA
Tel : +82-70-7147-8741 ~ 8749, 8752 ~ 8760 Fax : +82-31-8018-3745 www.samsungsecurity.com www.samsungcctv.com
COPYRIGHT BY SAMSUNG TECHWIN. ALL RIGHT RESERVED

SAMSUNG TECHWIN AMERICA Inc.
100 Challenger Rd, Suite 700 Ridgefield Park, NJ 07660
Toll Free : +1-877-213-1222 Direct : +1-201-325-6920
Fax : +1-201-373-0124

SAMSUNG TECHWIN EUROPE LTD.
2nd Floor, No. 5 The Heights, Brooklands, Weybridge,
Surrey, KT13 0NY, UK
Tel : +44-1932-82-6700 Fax : +44-1932-82-6701

SHANGHAI SAMSUNG TECHWIN CO., LTD.
32F, Bk B, International Business Center,
No. 391 Guiping Rd., Shanghai, China, 200233
Tel : +86-21-5427-1155 Fax : +86-21-5423-5122



SAMSUNG TECHWIN