



## 4498 Post Installation Procedure

### Description

The 4498 Post for outdoor active infrared barriers is suitable for installing various transmitting and receiving optical units.

Its semi-cylindrical shape allows to aim the beams of the optical units over a whole 180° arch. The black, transparent to infrared rays, screen allows to hide the optical units.

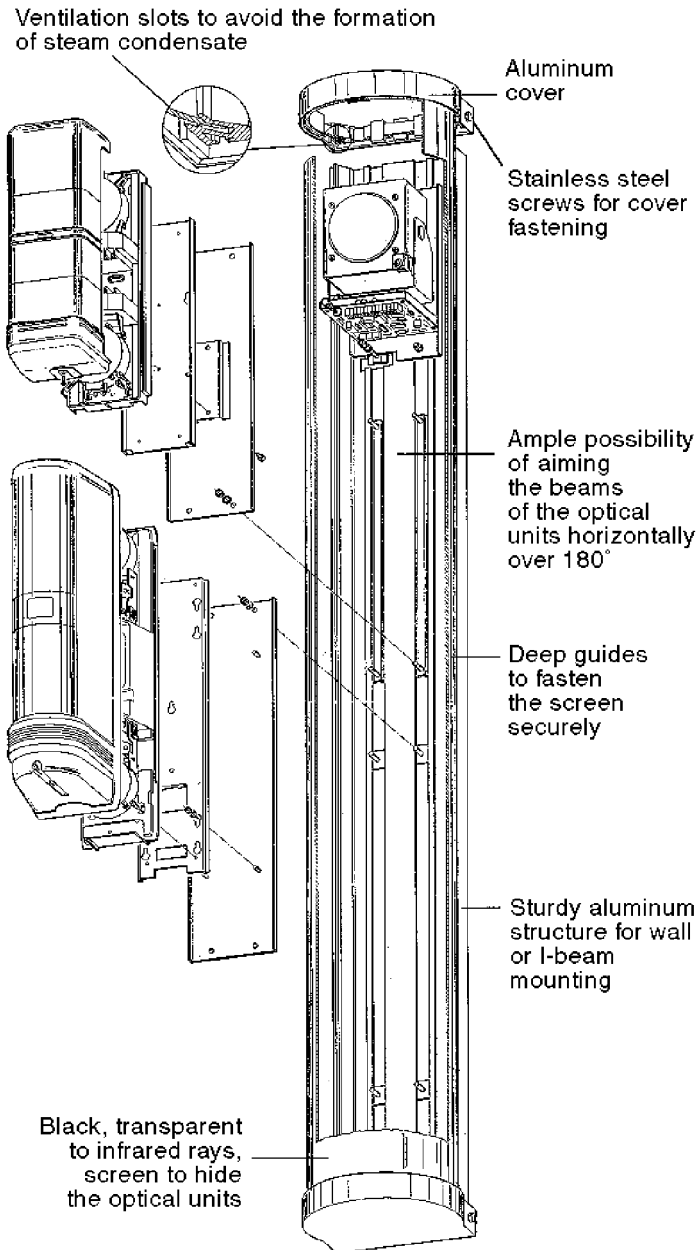
A sturdy aluminum profile allows the post to be mounted on walls or I-beams, as well as to be coupled with another Post for 360° protection.

The aluminum cover is provided with ventilation slots to avoid the formation of steam condensate. It has been designed to compensate the expansion of the black screen in high temperature conditions.



**HESA SpA**  
Via Triboniano, 25 - 20156 MILANO, Italy  
Tel. ++39 02 38036.1 - Fax ++39.02.38036.701  
Internet: www.hesa.com  
e-mail: hesa@hesa.com

**Filiale:**  
Via Val Grana, 14 - 00141 ROMA, Italy  
Tel. ++39 06.8861.415 - Fax ++39.06.8861.391  
e-mail: roma@hesa.com



**4498 Post**

## Installation Procedure

Please refer to the following step-by-step procedure to perform the installation of the 4498 Post.

Depending on the specific installation site, you should select the proper mounting procedure.

### Wall mounting.

The installation should be performed by using two or more SC-4400 plates mounted on the back of the Post, according to the procedure shown in Fig. 1. Please note that for Posts higher than 2 meters it is recommended to use three SC-4400 plates.

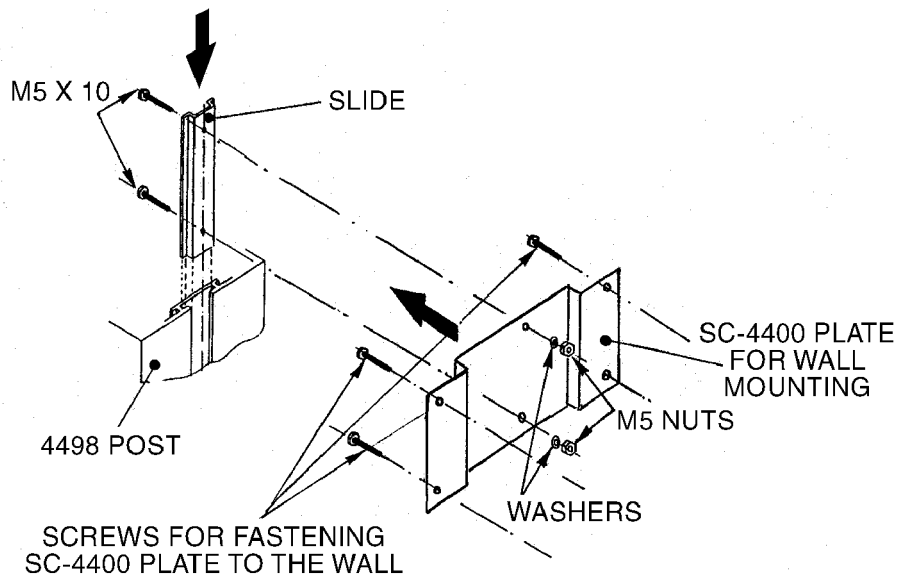


Fig. 1 - SC-4400 plate for wall mounting

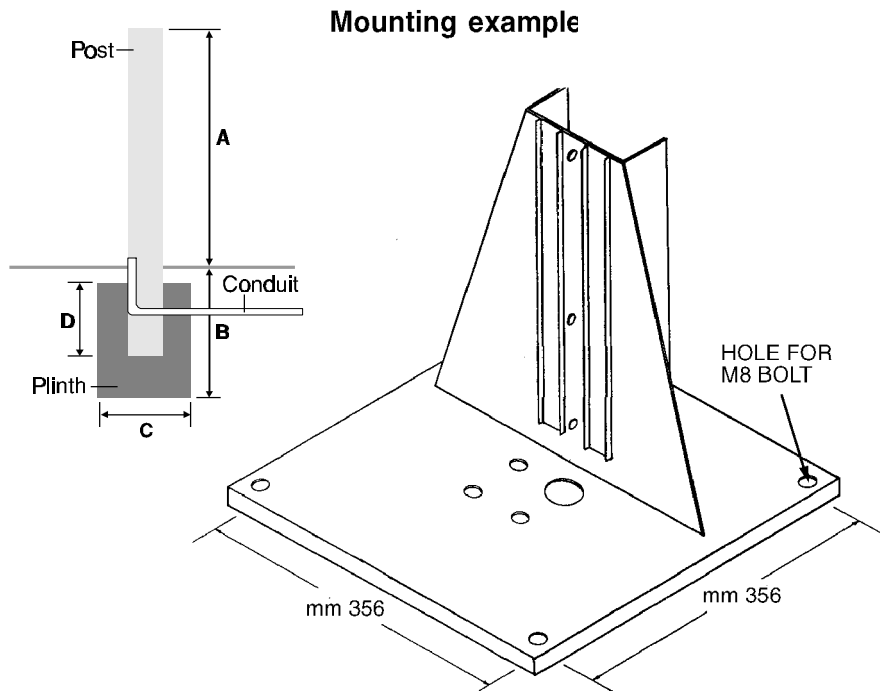
□ **Ground mounting.**

**Procedure 1:** The installation should be performed by building a plinth in concrete according to the dimensions shown in Table A, in which an I-beam should be placed by fastening the Post directly to it (installation procedure suggested in all critical environments).

**Procedure 2:** By inserting four M8 bolts into the plinth to fasten the BC-4498 Base (see Fig. 2). It is recommended to use the BC-4498 Base when the Post is less than 1.5 meters high or in environments where wind is not a critical factor.

If "A" is	"B" must be	"C" must be	"D" must be
1.150-1.900 mm	920-1.070 mm	610-760 mm	> of 450 mm
1.900-2.750 mm	1.070-1.220 mm	760-920 mm	> of 610 mm
over 2.750 mm	1.220 mm min.	920 mm min.	min. 920 mm

**Table A**



**Fig. 2 - BC-4498 Base**

**Step 1**

Mount the Post onto the selected support (wall, I-beam, BC-4498 Base) in such a way that the bottom cover (with the conduit hole) is at least 5 cm above the ground.

**Step 2**

Insert the Thermostatic Heating Driver 4498T Kit inside the Post (Fig. 3).

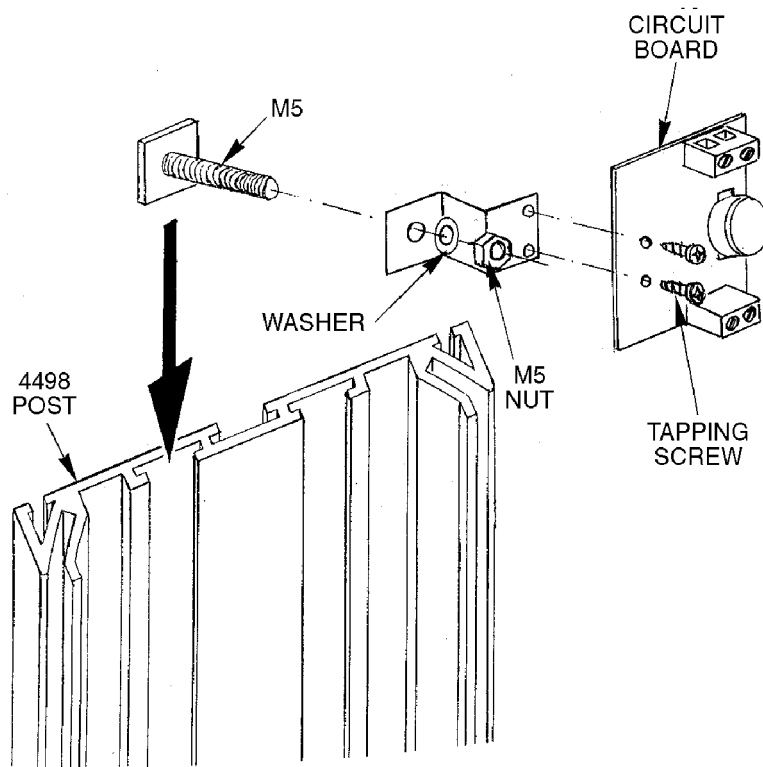
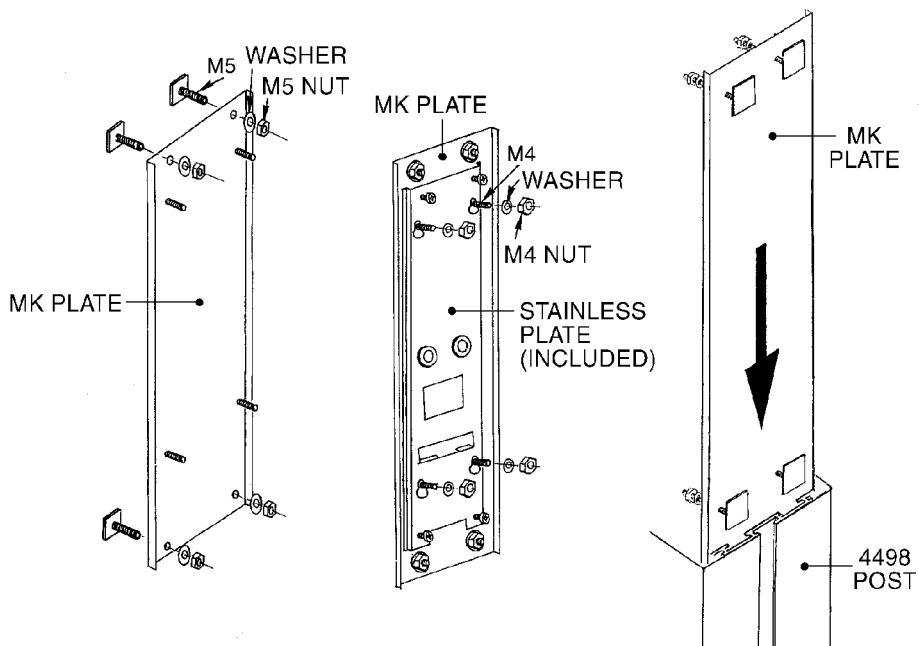


Fig. 3 - 4498T Kit

**Step 3**

Insert all the requested Transmitter and Receiver units, by using the proper fastening plate (see Fig. 4 for MK mounting).

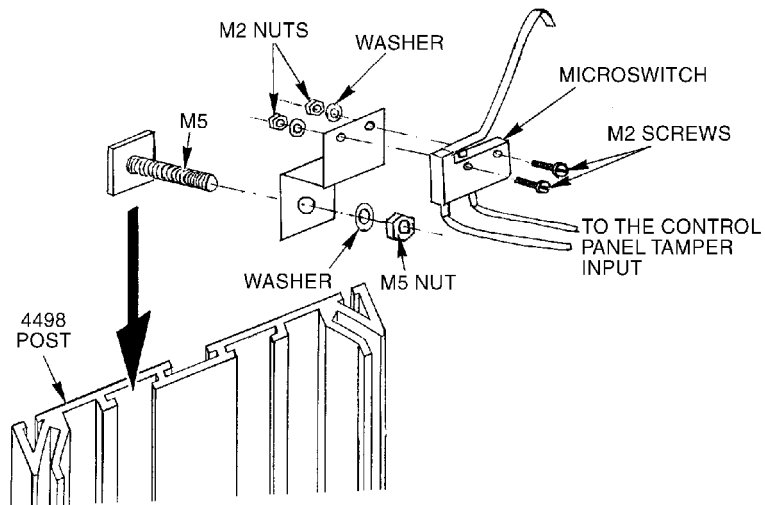
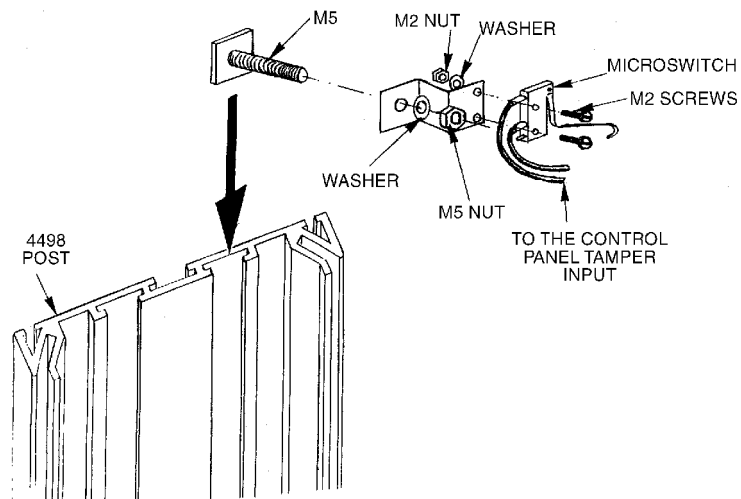
When the WONDEREX infrared beams (AX100ALPHA, AX200 ALPHA, AX-350MKII and AX-650MKII) are inserted in the 4498 post, it is suggested to remove the devices cover in order to avoid scattering or excessive attenuation of the infrared beams.



**Fig. 4 - MK Plate mounting instructions**

**Step 4**

Insert the 4498A Kit for anti-opening circuit (see Fig. 5) or/and for black screen removal (see Fig. 6).


**Fig. 5**

**Fig. 6**

**Step 5**

Connect the units by using the outgoing cables from the conduit. Align the optical units following the instructions in the Optical Units Installation Manuals.

**NOTE:** If a 4418 Transformer or other devices powered by 230 VAC are inserted into the Post, it is necessary to provide a proper grounding connection.

**Step 6**

Check the proper operation of all devices and insert the IR transparent black screen by sliding it into the two side guides from the top to the bottom of the Post until the bottom part is completely inserted into the bottom cover.

As an alternative, it is possible to insert the IR transparent screen by facing it to the Post and slightly enlarging its bottom ends in order to progressively fit the screen into the two side guides.

**Step 7**

Insert the top cover making sure that it activates the anti-opening contact (see Fig. 5) then fasten the cover to the Post with the two M4 stainless steel screws provided.

We recommend to keep the IR transparent acrylic black screen clean, in order to avoid that dust or other impurities may reduce the infrared transmission.



**HESA SpA**  
Via Triboniano, 25 - 20156 MILANO, Italy  
Tel. ++39 02 38036.1 - Fax ++39.02.38036.701  
Internet: www.hesa.com  
e-mail: hesa@hesa.com

**Filiale:**  
Via Val Grana, 14 - 00141 ROMA, Italy  
Tel. ++39 06.8861.415 - Fax ++39.06.8861.391  
e-mail: roma@hesa.com

DT00463-HE0199