

HIKVISION












Genetec

How to Use Genetec Omnicast

With Hikvision Devices

1. Supported Hikvision Devices

General Information

Product Category	Product Series	Pictures	Firmware Required	Recommended Firmware
IPC	Type B		Customized Firmware	build 110113
	Type C		Customized Firmware	build 110115
	Type D		Customized Firmware	build 101230
IP Speed dome	6 inch standard resolution		Customized Firmware	build 101203
	5 inch standard resolution		Customized Firmware	incoming
	5 inch megapixel resolution		Customized Firmware	incoming
DVS	6100 series		Customized Firmware	build110428
	6500 series		Customized Firmware	build 101223
DVR/NVR	9000/9100 Series		Customized Firmware	incoming
	9600 Series		Customized Firmware	incoming
	9500 Series		Customized Firmware	incoming

Model Details

IPC Type B

DS-2CD852MF-E ,
 DS-2CD862MF-E ,
 DS-2CD762MF-E,
 DS-2CD752MF-E
 DS-2CD762MF-FB
 DS-2CD752MF-FB
 DS-2CD762MF-IFB
 DS-2CD752MF-IFB

DS-2CD833F-E
 DS-2CD893PF-E
 DS-2CD893NF-E
 DS-2CD893PFWD-E
 DS-2CD893NFWD-E
 DS-2CD863PF-E
 DS-2CD863NF-E
 DS-2CD853F-E
 DS-2CD854F-E
 DS-2CD883F-E
 DS-2CD733F-E

DS-2CD733F-EI
 DS-2CD793PF-E
 DS-2CD793PF-EI
 DS-2CD793NF-E
 DS-2CD793NF-EI
 DS-2CD793PFWD-E
 DS-2CD793PFWD-EI
 DS-2CD793NFWD-E
 DS-2CD793NFWD-EI
 DS-2CD763PF-E
 DS-2CD763PF-EI

IPC Type C

DS-2CD763NF-E
 DS-2CD763NF-EI
 DS-2CD753F-E
 DS-2CD753F-EI
 DS-2CD754F-E
 DS-2CD754F-EI
 DS-2CD754FWD-E
 DS-2CD754FWD-EI
 DS-2CD783F-E
 DS-2CD7133-E
 DS-2CD7153-E
 DS-2CD8133F-E
 DS-2CD8153F-E
 DS-2CD8253F-EI
 DS-2CD8253F-E
 DS-2CD8254F-EI
 DS-2CD8254F-E

IPC Type D

DS-2CD886MF-E
 DS-2CD876MF
 DS-2CD886BF-E
 DS-2CD876BF

IP Speed Dome 6" standard resolution

DS-2DF1-601H
 DS-2DF1-602H
 DS-2DF1-603H
 DS-2DF1-604H
 DS-2DF1-605H
 DS-2DF1-606H
 DS-2DF1-607H
 DS-2DF1-608H
 DS-2DF1-611H
 DS-2DF1-612H
 DS-2DF1-613H
 DS-2DF1-614H
 DS-2DF1-615H
 DS-2DF1-616H
 DS-2DF1-617H
 DS-2DF1-618H
 DS-2DF1-631H
 DS-2DF1-632H

DS-2DF1-633H
 DS-2DF1-634H
 DS-2DF1-635H
 DS-2DF1-636H
 DS-2DF1-637H
 DS-2DF1-638H
 DS-2DM1-601H
 DS-2DM1-602H
 DS-2DM1-603H
 DS-2DM1-604H
 DS-2DM1-605H
 DS-2DM1-606H
 DS-2DM1-607H
 DS-2DM1-608H
 DS-2DM1-611H
 DS-2DM1-612H
 DS-2DM1-613H
 DS-2DM1-614H
 DS-2DM1-615H
 DS-2DM1-616H
 DS-2DM1-617H
 DS-2DM1-618H
 DS-2DM1-631H
 DS-2DM1-632H
 DS-2DM1-633H
 DS-2DM1-634H
 DS-2DM1-635H
 DS-2DM1-636H
 DS-2DM1-637H
 DS-2DM1-638H

IP Speed Dome 5" standard resolution

DS-2DF1-502
 DS-2DF1-503
 DS-2DF1-504
 DS-2DF1-505
 DS-2DF1-506
 DS-2DF1-507
 DS-2DF1-508
 DS-2DM1-501
 DS-2DM1-502
 DS-2DM1-503
 DS-2DM1-504

DS-2DM1-505
 DS-2DM1-506
 DS-2DM1-507
 DS-2DM1-508
 DS-2DF1-511
 DS-2DF1-512
 DS-2DF1-513
 DS-2DF1-514
 DS-2DF1-515
 DS-2DF1-516
 DS-2DF1-517
 DS-2DF1-518
 DS-2DM1-511
 DS-2DM1-512
 DS-2DM1-513
 DS-2DM1-514
 DS-2DM1-515
 DS-2DM1-516
 DS-2DM1-517
 DS-2DM1-518
 DS-2DF1-531
 DS-2DF1-532
 DS-2DF1-533
 DS-2DF1-534
 DS-2DF1-535
 DS-2DF1-536
 DS-2DF1-537
 DS-2DF1-538
 DS-2DM1-531
 DS-2DM1-532
 DS-2DM1-533
 DS-2DM1-534
 DS-2DM1-535
 DS-2DM1-536
 DS-2DM1-537
 DS-2DM1-538

IP Speed Dome: 5" Megapixel resolution

DS-2DF1-5702
 DS-2DF1-570A
 DS-2DF1-572
 DS-2DF1-57A
 DS-2DF1-5732

DS-2DF1-573A

DS-6104HCI-SATA

DS-6516HCI

DVS61xx series

DS-6104HCI

DS-6101HFI-SATA

DS-6101HFI-IP

DVS65xx series

DS-6508HCI

DS-6504HFI

DS-6508HFI

DS-6516HFI

2. Genetec Software Version

Omnicast v4.5, v4.6, v4.7 and SC5GA are supported. Omnicast 4.7 SR1 (Omnicast_v_4_7_b1880_44_Full) is used for the demo below.

3. How to Build a Simple Demo

3.1 Install the Software

Get a download link and license from Genetec.

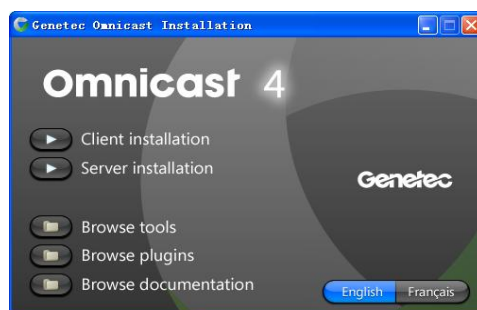
Install Omnicast Server and Client.
Activate the license.

Omnicast License Information

This document contains information required to successfully install your copy of Omnicast. Please refer to the document "Omnicast Installation Guide" to guide you through the Omnicast installation process.

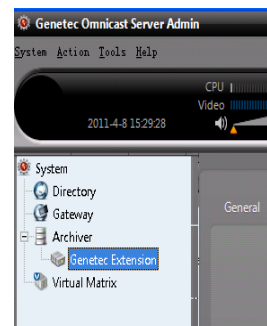
License Details

- Contact Name: Darren Wang
 - System ID: [Redacted]
 - Password: [Redacted]
 - License Web Site: <http://gap.genetec.com>
 - License Type: 16 cameras standard Demo, Not For Resale
 - Valid For: 180 days
- If not activated, license will expire on Sunday, September 25, 2011



3.2 Add Hikvision Devices

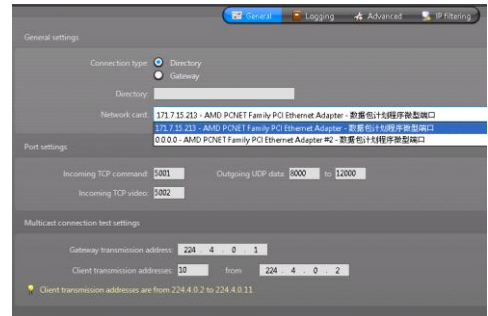
Run Server Admin. Right-click on the "Archiver" of the server Admin application, choose "Create", and then, select "Genetec Extension".



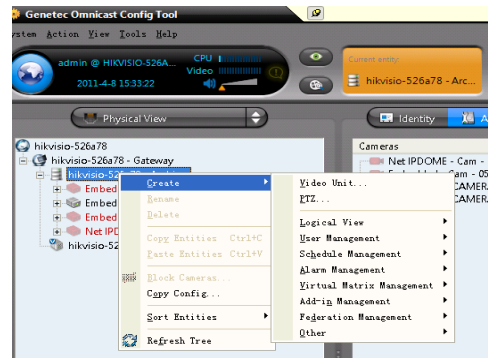
Start Omnicast Config Tool, and connect it to the Server. The “Gateway” is the IP address of the PC where the Omnicast server is running. If the server and the clients are running on the same PC, this box could be blank.



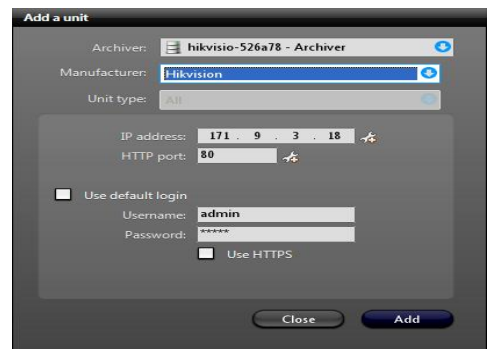
If the Omnicast Config Tool cannot connect to the Admin Server, please go to “Gateway”, “Archiver” and “Genetec Extension” settings of the Server Admin, and check whether the right Network card is in use.



In the Config Tool, Physical View, right click on the “Archiver”, select “Create”, and choose “Video Unit”.

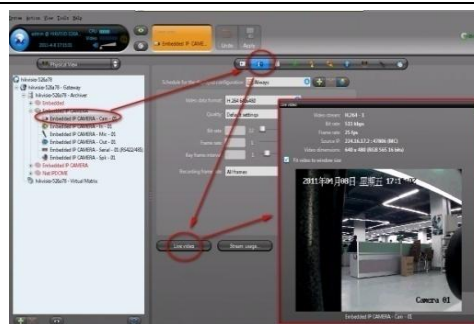


Add a Hikvision device by its IP address, user name and password. Please select “Hikvision” as the “Manufacturer”.

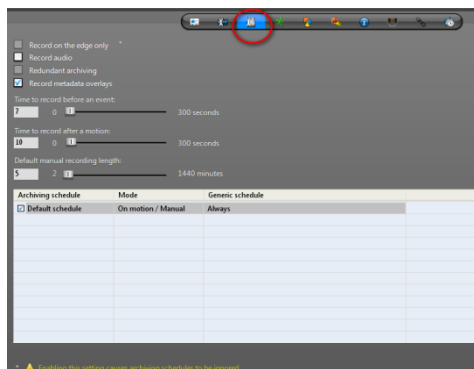


3.3 Configuration on Hikvision Devices

Once the device has been added to Admin Server, the video channels, microphone, speaker, alarm input, alarm output and serial ports of the device will be recognized. Click a camera icon; go to "Video Quality" page, and click "Live Video" to check whether the video comes successfully.



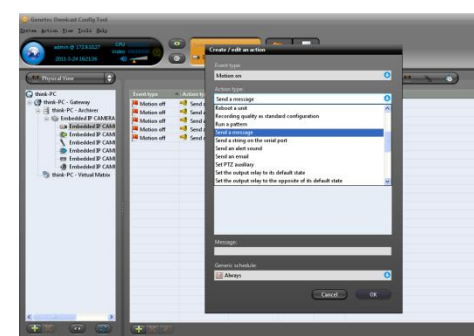
Go to "Recording" page, to make sure the recording schedule is enabled. It uses motion recording as default.



Go to "Motion detection" page, setup the motion detection parameters. Set it to trigger "Motion on" and "Motion off" events. Click "Apply" to save the changes.
Note: It is recommended to set "Sensitivity" to 50%.

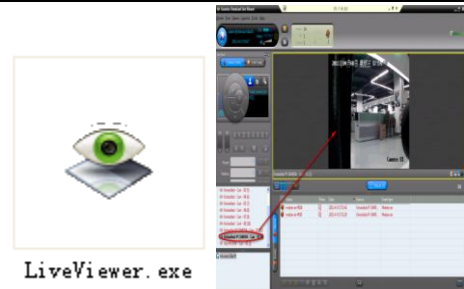


Go to "Actions" page, click the "Add" button at the bottom, choose "Event Type" as "Motion on", then, choose an action, click the "OK" button and "Apply" it. Here we select "Send a message" to all the groups.

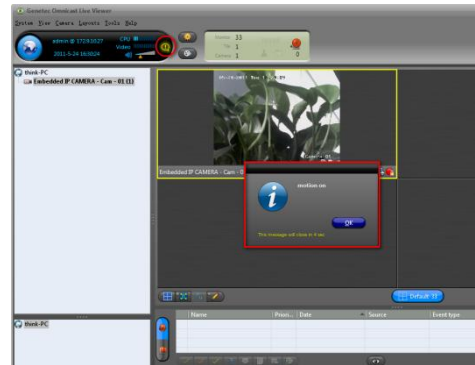


3.4. Operation on the Live Viewer

Run Live Viewer, and connect it with Admin Server. Archive Player will get the device list automatically. Click on a camera icon, drag it to a window and drop it, Live Viewer will display the video accordingly.

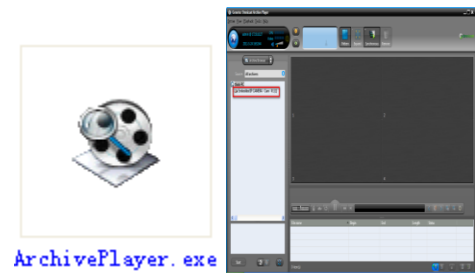


If any motion happens, the actions users have selected will be implemented automatically. In this example, a message box pops up.

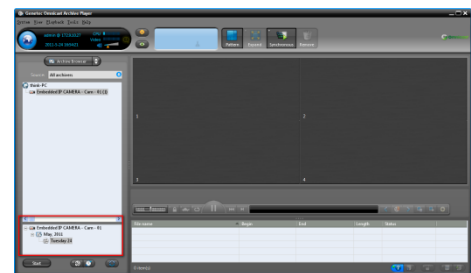


3.5 Operation on the Archive Player

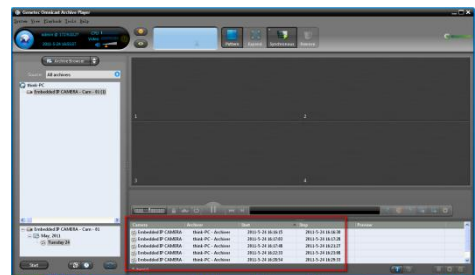
Run Archive Player, and connect it with Admin Server. Archive Player will get the device list automatically. Double click a camera icon to search the recording files.



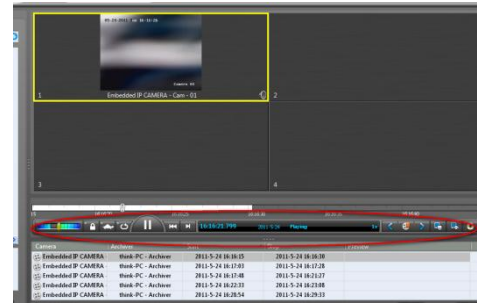
The dates with recording files will be shown at the left-bottom corner. Double click a date to show the recording files.



Double click on a recording file to play it.



The recording file will be played in a window. Users could use the control buttons to do playback control.



4. Known Issues

1. If there is a ghost image on Omnicast Client, users need to change the DWORD value for the OmnicastAVCodec_ErrorRecognition file to 0. To do this, open the registry editor and navigate to the following folder: HKEY_LOCAL_MACHINE\SOFTWARE\Genetec\Genetec Omnicast4.7. Double-click on the AVCodec_ErrorRecognition folder and in the Edit DWORD Value dialog box, change the Value data to 0.

If there is no such AVCodec_ErrorRecognition file, please add a H.264 device, and view it from the Omnicast Client. Then, the file will appear.

The path on different OS versions may be different.

2. 6500 series could only work with Omnicast V4.6. While 9000 and 9100 series DVR could only work with Omnicast V4.7.