

Panasonic

Digital Disk Recorders

Network Setup Instructions

Model Nos. **WJ-HD309**
WJ-HD316



Before attempting to connect or operate this product,
please read these instructions carefully and save this manual for future use.

CONTENTS

Preface	4
Features	4
Downloading/transmitting images	4
Event notification function	4
Host authentication	4
About these operating instructions	4
System requirements for a PC	5
Trademarks and registered trademarks	5
Abbreviations	5
About notations	5
Preparations	6
Connections	6
Performing network settings	7
About network security of this unit	10
Display the operation window	11
How to display the operation window	11
About the operation window	13
Setup	19
SETUP MENU chart	19
Basic operation with the [Setup] Tab	22
Settings for maintenance [Maintenance]	24
Functions for recording [Recording]	30
Functions for events [Event]	35
Settings for the recording/event schedule [Schedule]	42
Settings for switcher function [Switcher]	53
Settings for display [Display]	58
Settings for communication with other devices [Comm]	62
Perform the settings for the system [System]	81
Notification by e-mail	95
Alarm mail notification	95
Problem mail notification	97
About error mail	98
Troubleshooting	99

Preface

Features

It is possible to perform the settings or operate the unit using a PC when this unit is connected to a network.

The following functions are available when using a PC via a network as well as the functions operable on the buttons on the front panel of the unit.

Refer to the Network Operating Instructions (PDF) on the provided CD-ROM for further information about the available functions.

Downloading/transmitting images

It is possible to download (save) the currently displayed image in the web browser window onto the hard disk of a PC. By establishing an FTP server, it is possible to transmit images to the designated FTP server. When an event occurs, it is possible to transmit images from the camera installed in the place where the alarm occurred.

Event notification function

When an event occurs, it is possible to send e-mails to designated addresses to notify of the event occurrence. It is also possible to send an e-mail with an image recorded when the event occurred.

Host authentication

It is possible to restrict devices from operating this unit if their IP addresses are not registered.

About these operating instructions

There are 3 operating instructions for WJ-HD316/WJ-HD309 as follows.

- Operating Instructions (book)
- Network Operating Instructions (PDF)
- Network Setup Instructions (PDF, these Operating Instructions)

These "Network Setup Instructions" contain descriptions of how to perform the required settings to operate this unit using a PC via a network and descriptions for installers such as of how to connect the unit to other devices.

The settings of the unit will be different depending on the settings of a LAN or the Internet service provider to which the unit is to be connected.

Refer to an administrator of each network for further information about respective network.

Refer to the provided "Operating Instructions (book)" for descriptions of how to operate this unit using the buttons on the front panel of the unit, installation and system configurations.

Refer to the "Network Operating Instructions (PDF)" for descriptions of how to operate this unit using a PC.

Adobe® Reader is required to read these operating instructions (PDF) on the provided CD-ROM. When the Adobe® Reader is not installed on the PC, download the latest Adobe® Reader from the Adobe web site and install it.

System requirements for a PC

It is recommended to operate this unit using a PC that meets the following system requirements. If using a PC that does not meet the following system requirement, it may cause problems such as slow imaging or the browser becomes unable to operate.

OS	Microsoft® Windows® 2000 Professional SP4 Microsoft® Windows® XP Professional or Home Edition SP1
Computer	IBM PC/AT Compatible
CPU	Pentium IV 1.4GHz or faster
Memory	512 MB or more
Monitor	1024 x 768 pixels or more, 16-bit HIGH colour or better
Network Interface	10/100Mbps Network interface card must be installed
Web Browser	Microsoft® Internet Explorer 5.5SP2, 6.0 SP1 Other web browser are not compatible with this unit.

Important:

To operate this unit, the plug-in software is required to be installed. The plug-in software will be downloaded and installed automatically when accessing the unit using a browser. If the plug-in software has not been downloaded/installed correctly, install it from the provided CD-ROM. Refer to "readme.txt" on the provided CD-ROM for the descriptions of how to install it.

Trademarks and registered trademarks

- Adobe, Adobe logos, and Acrobat are registered trademarks of Adobe Systems Incorporated in the U.S. and/ or other countries.
- Microsoft, Windows and Windows XP are registered trademarks of Microsoft Corporation in the U.S. and/or other countries.
- Other names of companies and products contained in these operating instructions may be trademarks or registered trademarks of their respective owners.

Abbreviations

The following abbreviations are used in these operating instructions.

Microsoft® Windows® 2000 Professional Service Pack 4 is described as Windows 2000.

Microsoft® Windows® XP is described as Windows XP.

About notations

Important: Restrictions or cautions to operate respective functions.

Note: Tips to operate respective functions.

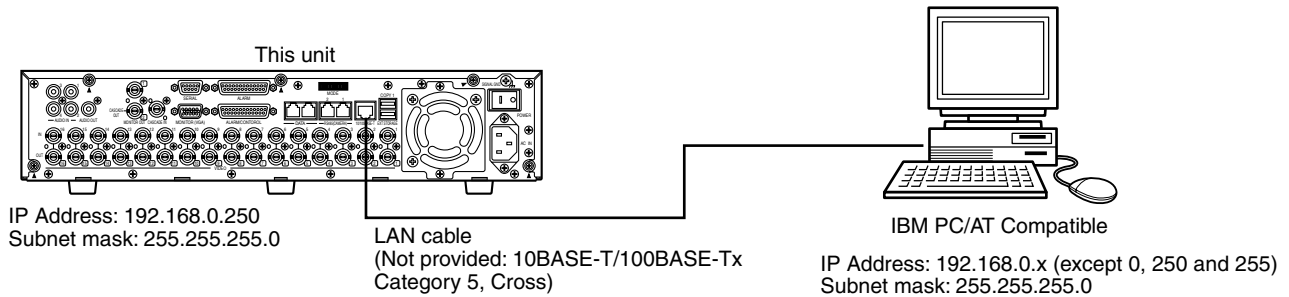
Preparations

Connections

When connecting this unit to a PC, the required hardware and cables are different depending on the system configuration. Prepare before starting connection.

Connecting this unit and a PC directly.

Connecting this unit to a PC directly using a LAN cable.

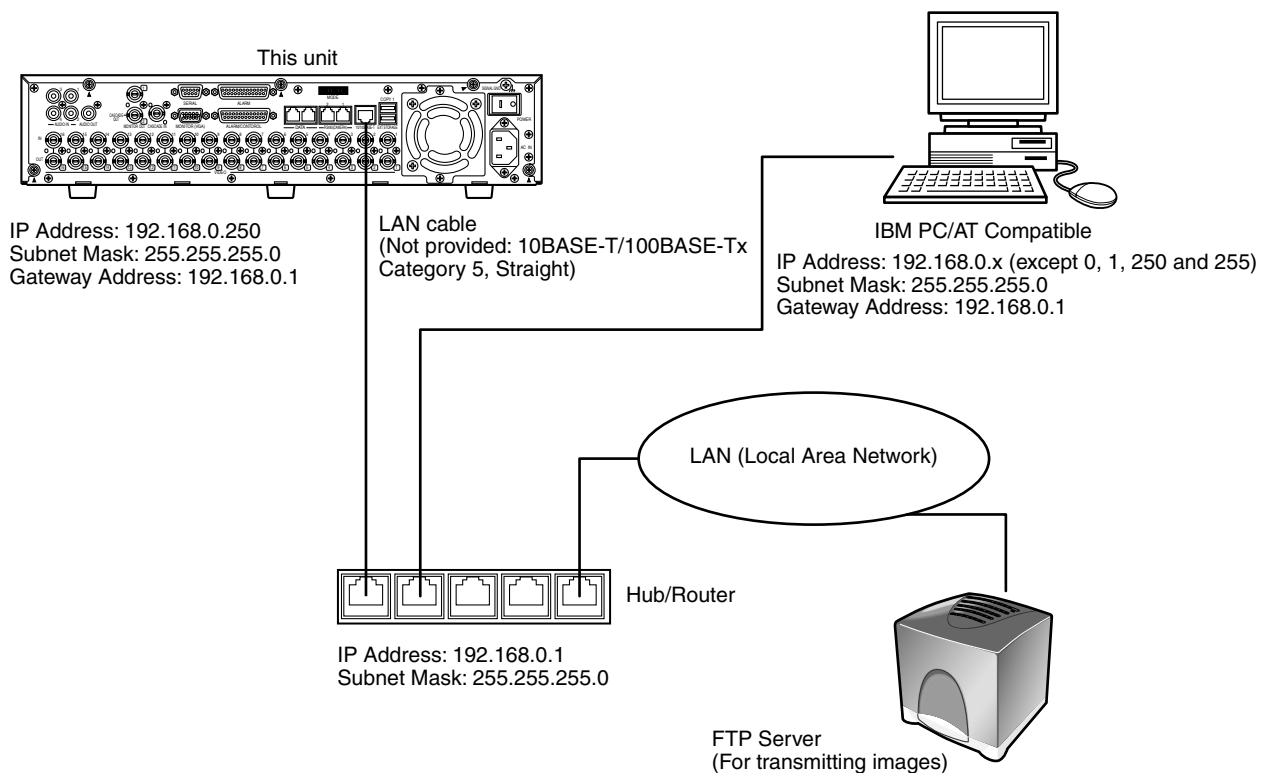


Important:

Use a cross cable when connecting this unit and a PC directly without using a hub or a router.

Add this unit to an existing network

Connecting this unit to a PC via a hub or a router. Connecting this unit to a hub using a LAN cable.



Performing network settings

In case of the following network environment, it is not necessary to perform network settings. It is possible to perform the settings or operate this unit using a web browser after completing the connection.

IP Address: 192.168.0.2 - 192.168.0.249, 192.168.0.251 - 192.168.0.254

Subnet Mask: 255.255.255.0

Gateway Address: 192.168.0.1

When the network settings are different from the settings above, perform the network settings of this unit and the PC.

Performing network settings of this unit

Use the buttons on the front panel of this unit to conform to the network settings to the network environment of the PC.

Refer to the Operating Instructions (book) for further information about network settings ([SETUP] - [Comm] Settings for communication with other devices – [NW Setup 2] Network connection settings).

Performing network settings of a PC

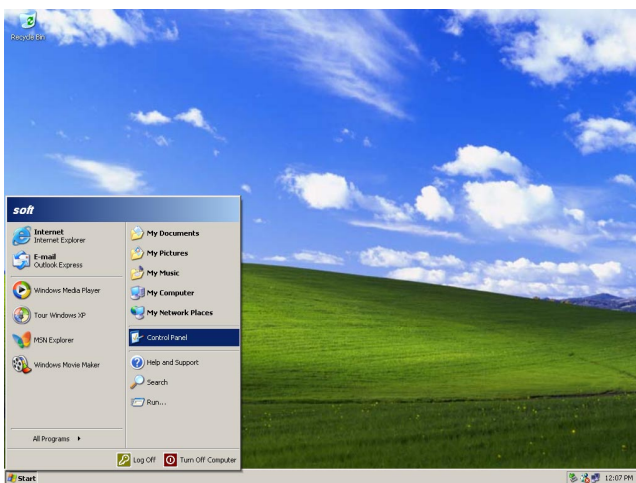
Change the TCP/IP setting of the PC to conform to the setting of this unit.

It is required to set the IP address of the PC to "192.168.0.XX (a number from 2 to 254 except 250)" to access this unit.

In these operating instructions, settings are performed on Windows XP as examples. Refer to the operating instructions of the respective OS for further information.

Screenshot 1

Start just after the PC is started up.



Step 1

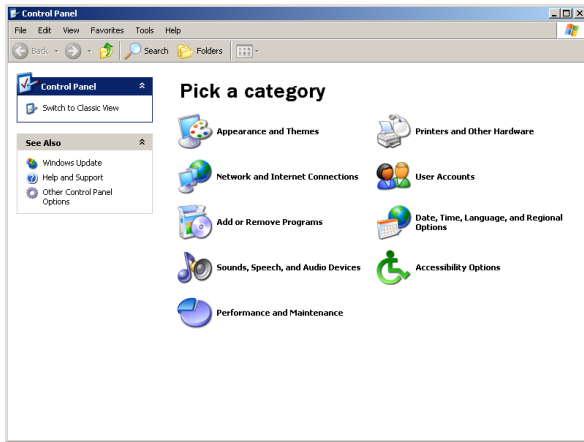
On the taskbar, click "Start", and then click the "Control Panel".

Important:

Log in to the PC as an administrator.

Screenshot 2

The control panel will be displayed.

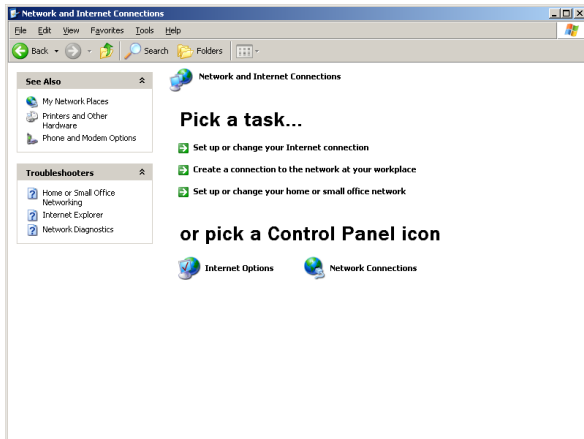


Step 2

Click the "Network and Internet Connections" icon.

Screenshot 3

The "Network and Internet Connections" window will be displayed.

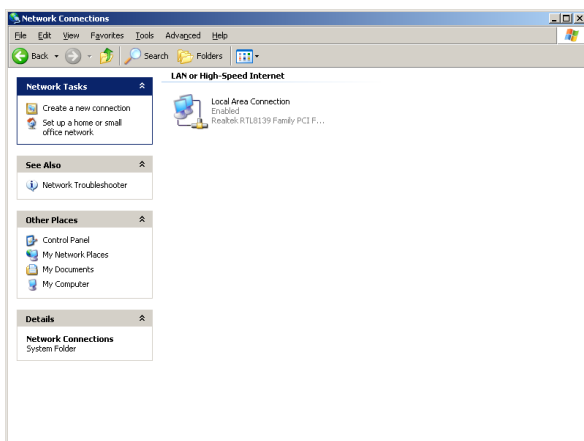


Step 3

Click "Network Connections".

Screenshot 4

The "Network Connections" window will be displayed.

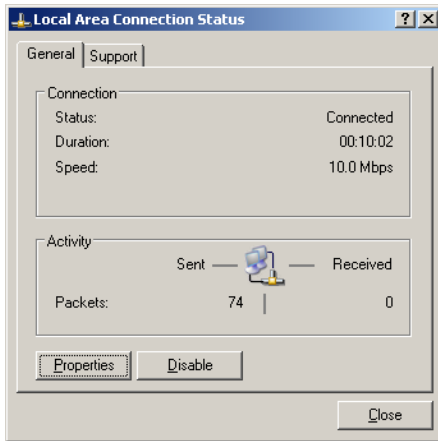


Step 4

Double click "Local Area Connection".

Screenshot 5

The "Properties" window of "Local Area Connection" will be displayed.

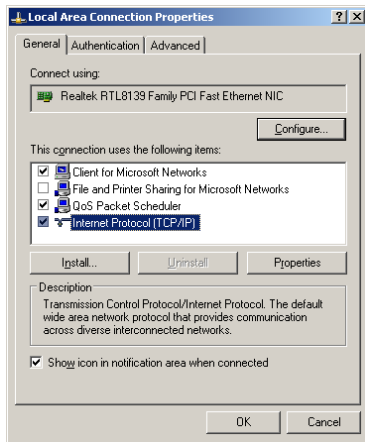


Step 5

Click "Properties".

Screenshot 6

The "Properties" window of "Local Area Connection" will be displayed.

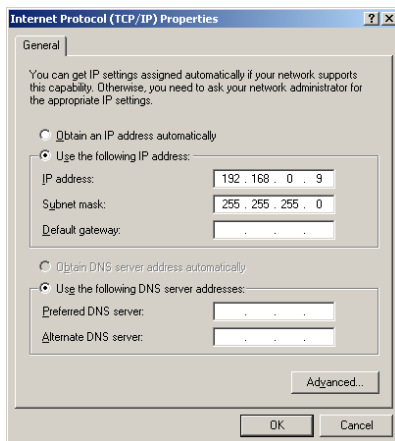


Step 6

Click "Internet Protocol (TCP/IP)", and then click "Properties".

Screenshot 7

The "Properties" window of "Internet Protocol (TCP/IP)" will be displayed.



Step 7

Click "Use the following IP address" and enter the IP address and the subnet mask as follows;

- IP Address: 192.168.0.9
- Subnet Mask: 255.255.255.0

Step 8

Click the "OK" button and close the window.

About network security of this unit

Equipped security functions

① Access restrictions by the host authentication and the user authentication

It is possible to restrict users from accessing this unit by setting the host authentication and/or the user authentication to on. (page 71)

② Access restrictions by changing the HTTP port

It is possible to prevent illegal access such as port scanning, etc. by changing the HTTP port number. (page 71)

For enhanced security

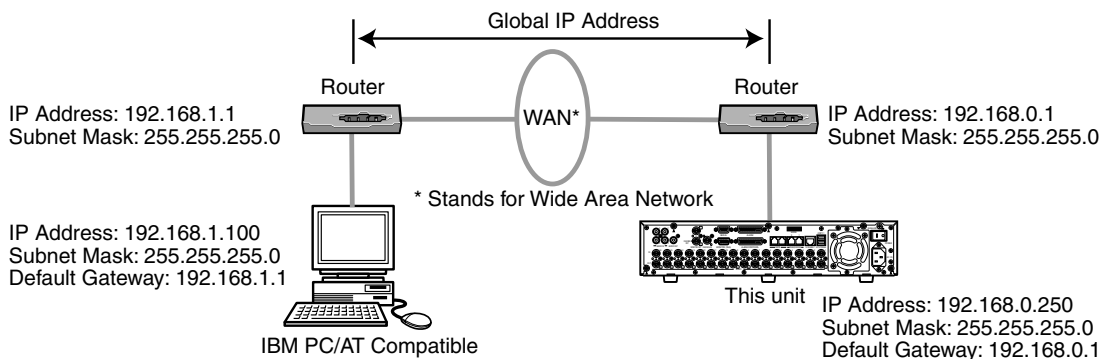
Divide the subnet using a router to enhance the network security by double authentications of IP addresses using this unit and a router. When required to connect this unit with a network that is not with enhanced security, connect the unit after the network security is enhanced, such as installing a VPN (Virtual Private Network) device, etc.

Important:

The settings of the unit will be different depending on the settings of a LAN or the Internet service provider to which the unit is to be connected.

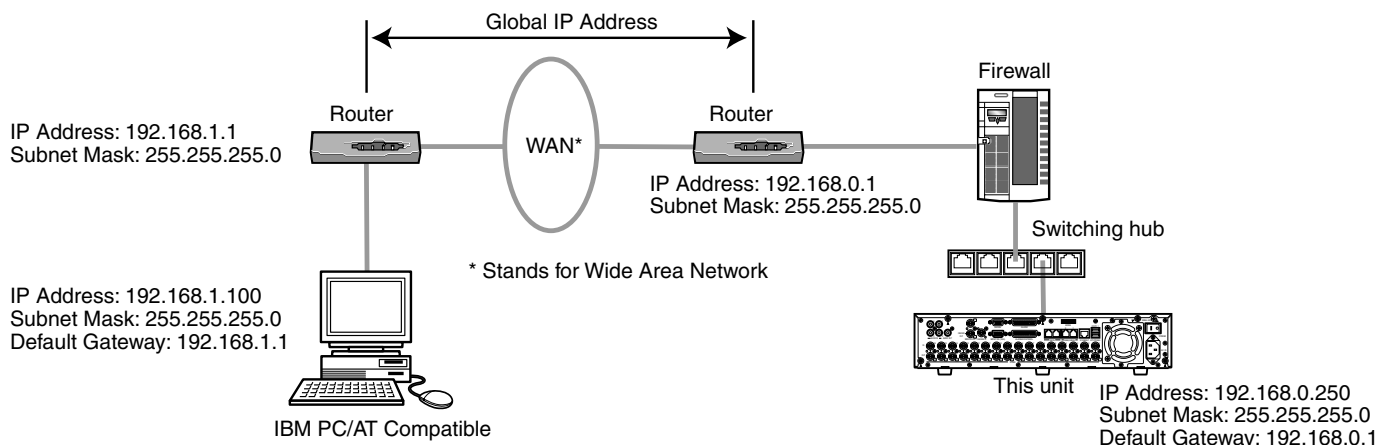
Refer to an administrator of each network for further information about respective network.

[Connection example]



Installing a firewall to use the packet filtering and the protocol filtering functions can better enhance the network security.

[Connection example]



Display the operation window

How to display the operation window

Start up the PC and operate this unit using the installed web browser.
The operation window will be displayed in the following procedure.

Screenshot 1

Start just after the PC is started up.



Step 1

Start up the web browser.

Screenshot 2

The web browser will start up and the set web site will be displayed.



Step 2

Enter the IP address set to this unit in the address box, and press the enter key.

Important:

- Refer to a system administrator for the set IP address of this unit.
- It is impossible to access this unit from a PC without a registered IP address when "ON" is selected for "Host Authentication" on the "System" menu. Refer to a system administrator for further information.
- Do not attach "0" before the numbers when entering IP address.

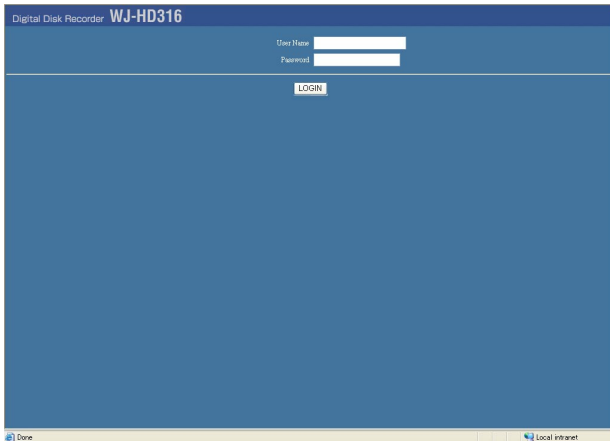
Example

Correct: 192.168.0.50

Wrong: 192.168.0.050

Screenshot 3

The user authentication window will be displayed. This window will not be displayed when "OFF" is selected for "User Authentication" on the "NW Setup 1" of "Comm" menu.



Step 3

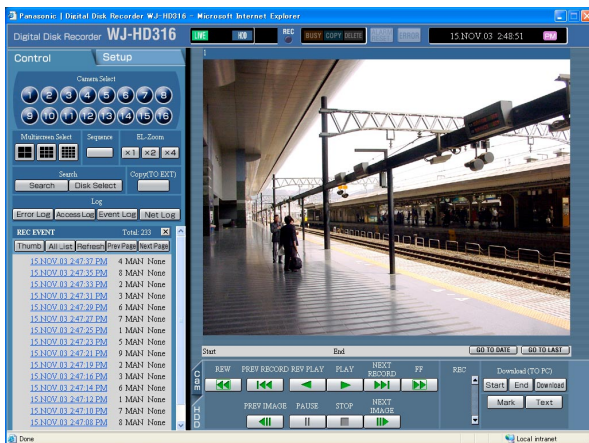
Enter the user name and password registered on this unit.

Important:

- Refer to a system administrator for the set user name and password.
Refer to page 86 for the descriptions of how to register users.
- The default user name and password are as follows.
User Name: ADMIN
Password: 12345
- To enhance the security, change the password for an administrator before start running the unit. Refer to page 82 for descriptions of how to change the password.

Screenshot 4

The top page will be displayed.

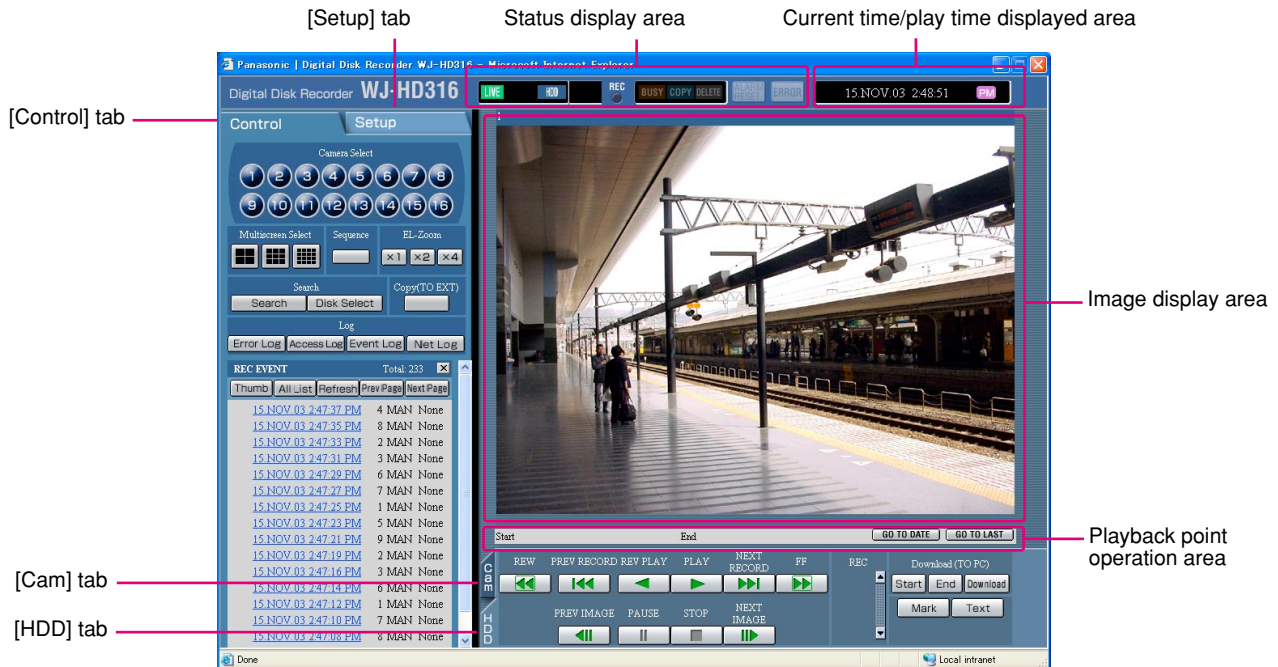


Step 4

Click the buttons or the tabs for operations.

About the operation window

Top page



[Control] tab (page 14)

The switcher functions such as switching camera channels or displaying sequentially, are operable on this page. Search results or log information will also be displayed on this page.

[Setup] tab (page 15)

Operations for setup of this unit can be performed on this page.

Status display area (page 16)

Current status such as playback status or recording status will be displayed.

Current time/play time displayed area

Current time and play time will be displayed during playback.

Image display area

Recorded images and live images will be displayed. The setup menu will be displayed while setting up.

Playback point operation area (page 17)

It is possible to mark playback points or skip to the latest recorded image.

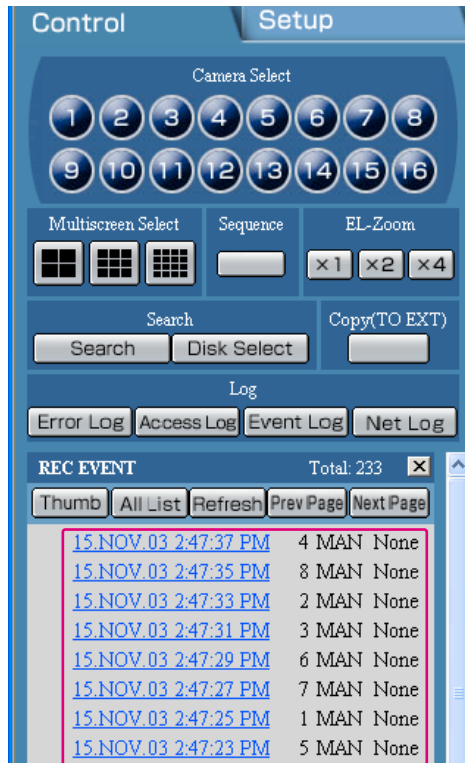
[HDD] tab (page 17)

Operation for recorded images such as playback or downloading (saving) recorded images can be performed on this page.

[Cam] tab (page 18)

Controlling cameras by zooming, focusing and auto panning can be performed on this page.

[Control] tab




Log display area


[Camera Select] buttons

Images from the selected camera channel will be displayed with a spot display on the image display area by clicking one of these buttons.


[Multiscreen Select] box

Up to 16 camera images can be displayed simultaneously on a multi-screen.

 **4-split screen button:** 4 camera images will be displayed on a 4-split screen in the following order each time this button is clicked;
for the WJ-HD316: 1 - 4 CH → 5 - 8 CH
→ 9 - 12 CH → 13 - 16 CH → 1 - 4 CH ...

 for the WJ-HD309: 1 - 4 CH → 5 - 8 CH → 9 CH
→ 1 - 4 CH ...

9-split screen button: 9 camera images will be displayed on a 9-split screen in the following order each time this button is clicked;
For the WJ-HD316: 1 - 9 CH → 10 - 16 CH
→ 1 - 9 CH...

 for the WJ-HD309: 1 - 9 CH
16-split screen (only for the WJ-HD316):
Images from 1 - 16 channels will be displayed on a 16-split screen.

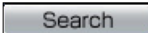
[Sequence] button

Camera images to be displayed will be switched by clicking this button. Camera images will be displayed sequentially according to the settings performed in advance.

[EL-Zoom] box

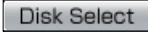
Camera images will be displayed in the portion of the clicked zoom ratio button.

[Search] box

 **[Search] button:** The "Search Select" pop-up window will be displayed.

Use this button to search the recorded images and play them. (Refer to the Network Operating Instructions (PDF).)

Search results will be displayed in list form in the log display area. (Refer to the Network Operating Instructions (PDF).)

 **[Disk Select] button:** The "Disk Select" pop-up window will be displayed. Use this button to select a disk to be played/searched. (Refer to the Network Operating Instructions (PDF).)

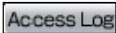
[Copy (TO EXT)] button

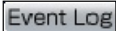
The copy window will be displayed by clicking this button. Use this when copying recorded images onto the copy area of the hard disk or external recording devices (DVD-RAM disk, DVD-R disk, CD-R disk) manually.

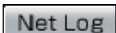
[Log] box

 **[Error Log] button:** The error logs of this unit will be displayed.

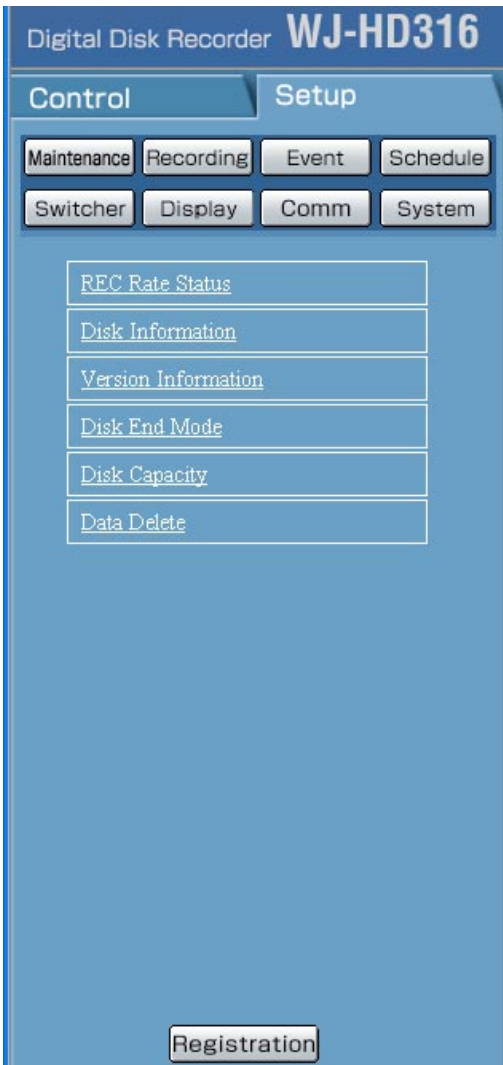
Logs will be displayed in list form in the log display area.

 **[Access Log] button:** The time when logged in/out for this unit, the user name, and the IP address will be displayed. Logs will be displayed in list form in the log display area.

 **[Event Log] button:** The event logs (event occurrence times and their details) will be displayed. Logs will be displayed in list form in the log display area.

 **[Net Log] button:** The network error logs will be displayed. Logs will be displayed in list in the log display area.

[Setup] tab



Important:

When the settings are applied, all users who have logged in to this unit will be forcibly logged out.

Maintenance [Maintenance] button

The menu for the settings of the hard disk will be displayed. Refer to page 24 for further information about this menu.

Recording [Recording] button

The menu for the recording settings will be displayed. Perform the basic recording settings and emergency recording with this menu. Refer to page 30 for further information about this menu.

Event [Event] button

The menu for the settings of actions at event occurrence for each event type (terminal alarm, motion detection alarm, video loss alarm and command alarm) will be displayed.

Refer to page 35 for further information about this menu.

Schedule [Schedule] button

The menu for the settings of the recording schedule (performs recording/event action by designating time and a day of the week) will be displayed.

Refer to page 42 for further information about this menu.

Switcher [Switcher] button

The menu for the image switching settings such as the sequential operation on monitors 1 and 2, or for displaying the login window will be displayed. Refer to page 53 for further information about this menu.

Display [Display] button

The menu for the display settings of the monitors 1 and 2 will be displayed. Refer to page 58 for further information about this menu.

Comm [Comm] button

The menu for the required settings to communicate with external devices will be displayed. Refer to page 62 for further information about this menu.

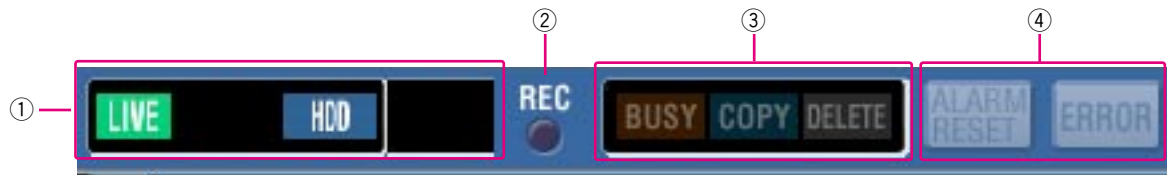
System [System] button

The menu for the required system settings to activate this unit will be displayed. Refer to page 81 for further information about this menu.

Registration [Registration] button

Applies the settings to this unit. Press this button to complete the setting after editing on the Setup menu.

Status display area



① The status of a live/playback image will be displayed.

LIVE [LIVE]:

Indicates that a live image is being displayed.

SEQ [SEQ]:

Indicates that a live image is being displayed in the sequential display mode.

▶ [Playback]:

Indicates that a playback image is being displayed.

◀ [Reverse playback]:

Indicates that a reverse playback image is being displayed.

▶▶ [Fast playback]:

Indicates that a fast playback image is being displayed.

◀◀ [Fast reverse playback]:

Indicates that a fast reverse playback image is being displayed.

|| [Pause]:

Indicates that a paused image is being displayed.

HDD [HDD]:

Indicates that playback of a recorded image stored in the normal recording area or the event recording area of the built-in hard disk of this unit is currently being selected.

HDD COPY [HDD COPY]:

Indicates that the HDD copy area is currently being selected.

FILTERING [FILTERING]:

Indicates that the recording event list/thumbnaill is filtered.

Refer to the Network Operating Instructions (PDF) for further information about filtering of recording event list.

Step 1 – Step 7 [STEP1] – [STEP7]:

Indicates the playback speed.

STEP1: Normal playback speed

STEP2: Approx. 4x playback speed

STEP3: Approx. 8x playback speed

STEP4: Approx. 16x playback speed

STEP5: Approx. 32x playback speed

STEP6: Approx. 48x playback speed

STEP7: Approx. 96x playback speed

DL [DL]:

Indicates that the playback images are currently being downloaded.

END [END]:

Indicates that download of the playback images are ended.

② REC indicator

The status of recording will be displayed.

When lit red:

Indicates that recording is being performed.

When not lit:

Indicates that recording is not being performed.

③ Indicates the following statuses:

BUSY [BUSY]:

Indicates that the camera is not operable because a user with higher priority is currently operating that camera.

COPY [COPY]:

Indicates that copying is being performed.

DELETE [DELETE]:

Indicates that deletion of a recorded image is being performed.

④ Indicates information about events and errors.

ALARM RESET [ALARM RESET]:

Indicates an event occurrence.

The alarm display action will be canceled by clicking this button. (Refer to the Network Operating Instructions (PDF).)

ERROR [ERROR]:

Indicates an error occurrence.

Refer to the provided Operating Instructions (book) for further information about error action.

Playback point operation area



- ① Indicates the start time and the end time of a download. (Refer to the Network Operating Instructions (PDF).)
- ② **[GO TO DATE] [GO TO DATE] button**
Indicates the time and date of a marked point. Use this button to designate a desired time and date of a recorded image to be played. (Refer to the Network Operating Instructions (PDF).)
- ③ **[GO TO LAST] [GO TO LAST] button**
Skips to the latest recorded time of a recorded image from the currently displayed camera channel and plays it.

[HDD] tab



[REW] button

Fast reverse playback will be performed. Playback speed for the fast reverse playback will be changed in the following order each time this button is clicked:
STEP2 (approx. 4x) → STEP3 (approx. 8x) →
STEP4 (approx. 16x) → STEP5 (approx. 32x) →
STEP6 (approx. 48x) → STEP7 (approx. 96x)

[PREV RECORD] button

Skips to the previous recorded image and plays it.

[REV PLAY] button

Reverse playback of a recorded image will be performed.

[PLAY] button

Playback of a recorded image will be performed.

[NEXT RECORD] button

Skips to the next recorded image and plays it.

[FF] button

Fast playback will be performed. Playback speed for the fast playback will be changed in the following order each time this button is clicked:
STEP2 (approx. 4x) → STEP3 (approx. 8x) →
STEP4 (approx. 16x) → STEP5 (approx. 32x) →
STEP6 (approx. 48x) → STEP7 (approx. 96x)

[PREV IMAGE] button

The previous frame will be displayed when this button is clicked during pausing.

[PAUSE] button

The playback will be stopped when this button is clicked during playback. The playback will be resumed when this button is clicked during pausing.


[STOP] button


Stops playback and displays a live image.

[NEXT IMAGE] button


The next frame will be displayed when this button is clicked during pausing.

[REC] box


The recording button and the recording stop button will be displayed when the  button is clicked.

Displaying the recording button and the recording stop button will be unavailable when the  button is clicked.

 **[Recording] button:** Starts manual recording.


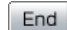
 **[Stop recording] button:** Stops manual recording.

Notes:

- It is possible to switch between all channels or the channel currently displayed in the web browser window to be selected for manual recording by performing the settings.
- To display the [Recording] button and the [Stop recording] button, press down the  button until they are displayed.


[Download (TO PC)] box

Downloads the currently played image to a PC.

Sets the time range of a desired image to be downloaded by clicking the  [Start] button and the  [End]

[End] button.

The start time and the end time for download will be displayed in the playback position display area.

The dialog window for saving an image to be downloaded onto a designated location will be displayed by clicking the  [Download] button.

 **[Viewer] button**

The viewer software can be downloaded by clicking this button. (Refer to the Network Operating Instructions (PDF).)

 **[Mark] button**

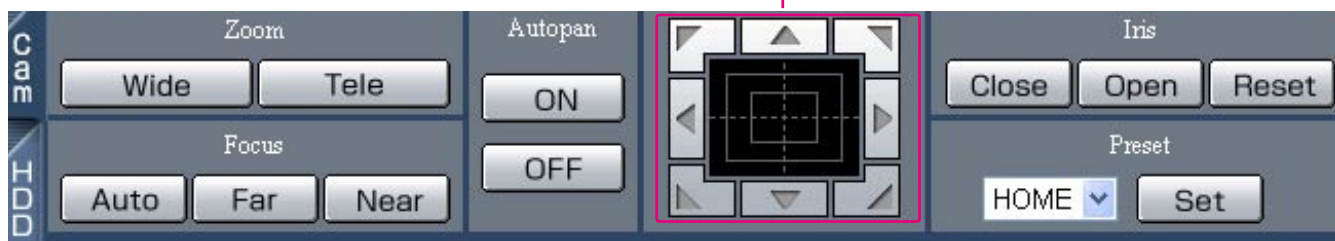
Mark by clicking this button during playback. When marked, playback after searching for the marked point is available. (Refer to the Network Operating Instructions (PDF).)

 **[Text] button**

The attached text information will be displayed when this button is clicked during pausing.

It is possible to edit the displayed text information.

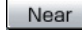
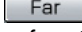
[Cam] tab



[Zoom] box


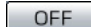
Zooming can be adjusted by clicking the  [Wide] button or the  [Tele] button.

[Focus] box

Focusing can be adjusted by clicking the  [Near] button or the  [Far] button.

The auto focus function can be performed by clicking the auto button.

[Autopan] box


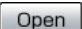
The auto function of the camera will start by clicking the  [ON] button. The auto function can be stopped by clicking the  [OFF] button.

Control pad

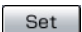

Clicking the buttons around the control pad can move (pan/tilt) a camera in the clicked direction.

Clicking inside the control pad also can adjust the vertical/horizontal position (pan/tilt) of the displayed image. Panning/tilting speed will be faster if a clicked point gets farther from the centre point of the control pad.

[Iris] box

Iris can be adjusted by clicking the  [Close] button or the  [Open] button.

[Preset] box

Moves a camera to the preset position registered in advance. Click the  [SET] button after selecting a preset number by clicking the  button.

Registering preset positions is required to perform the preset function.

Setup

Performing each setting item on the setup menu should be completed in advance to operate this unit. Each setting item on the setup menu can be performed on the setup page. Setting the following items are available on this page.

SETUP MENU chart

Setup menu	Description	Page
Maintenance		
REC Rate Status	Recording rate in each recording mode and image quality for each camera channel will be displayed in list form.	24
Disk Information	Hard disk information such as available capacity of the built-in hard disk or an extension unit will be displayed.	25
Version Information	Version information of the software and hardware, and MAC address will be displayed.	26
Disk End Mode	Perform the settings for action when running out of hard disk space.	27
Disk Capacity	If the available hard disk/external recording device capacity reaches a specified level, a warning will be displayed.	28
Data Delete	Data on the hard disk/external recording device will be deleted. The DVD-RAM disk connected to the copy port on the rear panel of this unit will be formatted (initialized).	29
Recording		
Recording Setup	Basic recording setup can be performed with this menu.	30
Emergency REC	Settings for emergency recording such as recording time and recording rate can be performed on this menu.	33
Event		
Event Setup	Settings for event action can be performed with this menu.	35
VMD Setup	The motion detection area, sensitivity and detection mode can be performed for each camera channel.	37
Alarm Setup	Settings for duration of alarm display and alarm mask can be performed with this menu.	40
Terminal Setup	The alarm terminal polarity can be set with this menu.	41
Schedule		
REC Program	Create recording programs on this menu. Up to 4 programs can be created. Settings for recording actions such as image quality or recording rate for each camera channels can be performed for each program with this menu.	42
Event Program	Create event programs. Up to 4 programs can be created. Settings for action mode and camera action can be performed for each event type.	46

Setup menu	Description	Page
Schedule		
Time Table	Make timetables of operation for each day of the week, and assign recording action programs and event action programs to each timetable.	49
Special Days	Assign timetables for special days apart from other days of the week.	52
Switcher		
Monitor 1	Settings for the image switching such as the sequential operation or for displaying the login window on monitor 1 can be performed.	53
Monitor 2	Settings for the image switching such as the sequential operation or for displaying the login window on monitor 2 can be performed.	55
Network	Settings for the image switching of the PC monitor connected to this unit via a network can be performed.	56
Display		
OSD Setup	Settings for displaying the display position of the camera title or time can be performed.	58
Monitor 1	Perform the display settings for the monitor 1 such as time display, camera title display and alarm display.	60
Monitor 2	Perform the display settings for the monitor 2 such as task bar style, time display position and camera title display.	61
Comm		
Camera Control	Communication method to control cameras for each camera channel can be performed.	62
PS.Data Setup	Settings for PS-Data can be performed. Set this item when connecting an external device such as a controller to the DATA port on the rear panel.	64
RS485 Setup	Settings for RS485 can be performed. Set this item when connecting a camera to the RS485 port on the rear panel.	66
RS232C Setup	Settings for SERIAL (RS232C) can be performed. Set this item when connecting a PC to the serial terminal on the rear panel.	68
Network Setup 1	Settings for a network can be performed. Set this item when operating this unit via a network such as LAN. User authentication and host authentication can be set with the network basic settings.	70
Network Setup 2	Settings for a network connection such as settings of the IP address and gateway address can be performed. Set this item when operating this unit via a network such as a LAN.	72

Setup menu	Description	Page
Network SNMP Setup	Settings for SNMP can be performed. Set this item to check the status of the server by connecting to the SNMP server.	74
Network NTP Setup	Set this item when adjustment of time is required to be set with the NTP server such as when setting the NTP server address or time zones.	75
Network FTP Setup	Settings for the FTP server can be performed. Settings for transmitting images from a camera connected to this unit to a designated FTP server periodically can be performed with the Network FTP Setup menu.	76
Network Mail Setup	Set this item to send e-mails to addresses registered in advance at an event occurrence.	79
System		
Basic Setup	Settings for basic operations of this unit can be performed.	81
Time & Date Setup	Settings for the current time and for displaying time & date can be performed.	84
User Registration	Set this item for user registration and user authentication. User name, password and operational level can be set.	86
User Edit/Delete	Correction or deletion of user information can be performed.	88
Host Registration	Set this item for the host authentication by registering PCs (hosts) allowed to access this unit via a network. Operational levels and IP addresses of PCs can be set.	89
Host Edit/Delete	Correction or deletion of host information can be performed.	91
User Level Setup	Functions operable in each user level can be set.	92
Save/Load	Contents of settings for this unit will be saved or loaded.	94

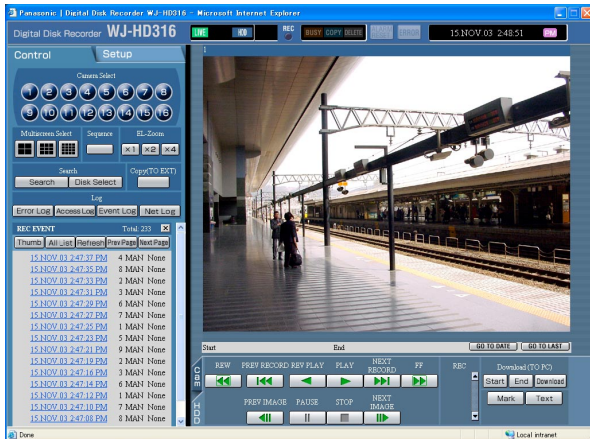
Basic operation with the [Setup] Tab

[Screenshot 1]

Start operation after the top menu is displayed.

[STEP 1]

Click the [Setup] tab.

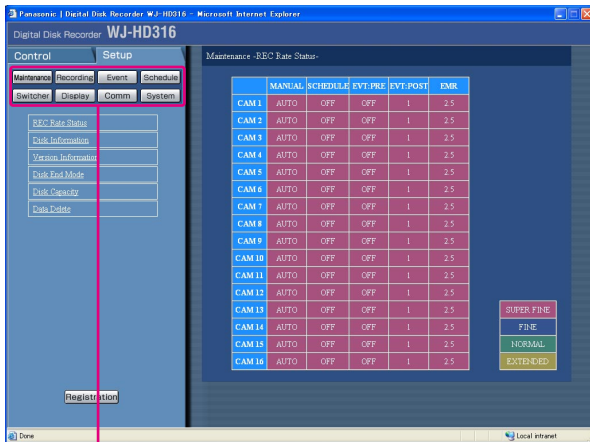


[Screenshot 2]

The [Setup] tab will be displayed.

[STEP 2]

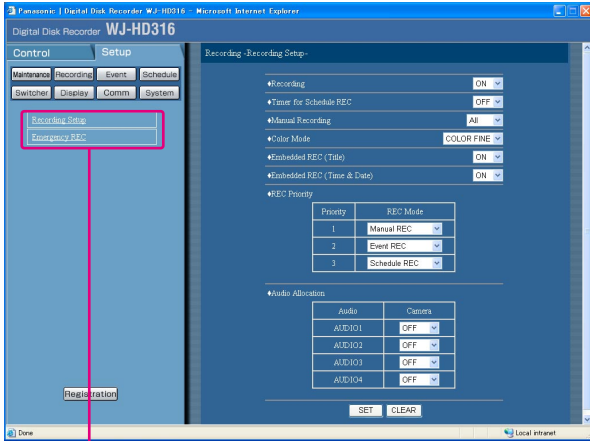
Click a button on the [Setup] tab.



Main menu

[Screenshot 3]

The submenus respective to the clicked button on the [Setup] tab will be displayed.



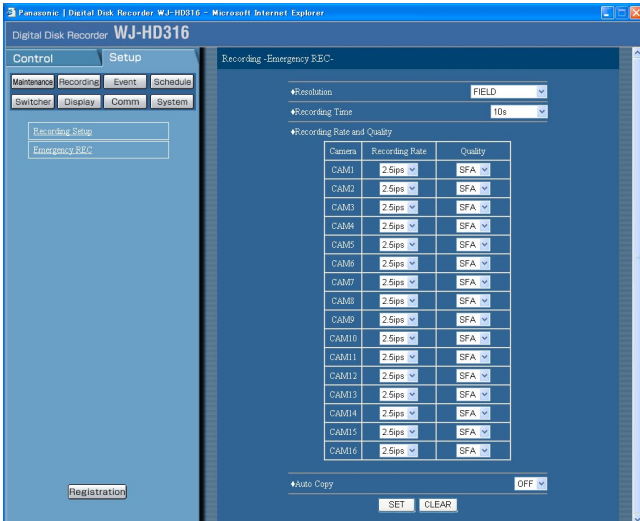
Submenu

[STEP 3]

Click the desired submenu on the [Setup] tab.

[Screenshot 4]

The setting page of the selected submenu will be displayed in the image display area.



[STEP 4]

Perform the settings for each item. Click the [SET] button after completing the settings. When the [CLEAR] button is clicked, the content of the setting will be cleared.

[STEP 5]

To complete the setting menu, click the [Registration] button.

The setting will be applied.

Important:

- If the settings are applied, all login users will be forcibly logged out.
- The setting will not be applied by clicking the [SET] button in step 4 yet. To apply the setting, click the [Registration] button on the [Setup] tab.

Settings for maintenance [Maintenance]

Settings for the hard disk can be performed. Checking the recording rate or image quality for each camera channel is available.

Confirmation of recording rate and image quality for each camera channel [REC Rate Status]

Recording rate in each recording mode for each camera channel will be displayed in list form.

Screenshot 1

Start operation after the submenu of the maintenance menu is displayed by clicking the [Maintenance] button in the [Setup] tab. (page 15)

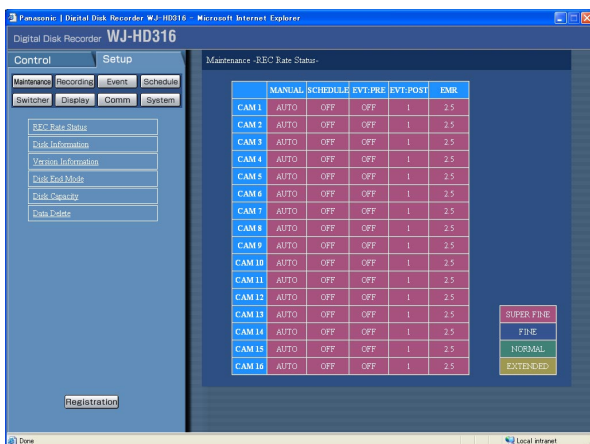
Step 1

Click "Recording rate list".



Screenshot 2

The "Emergency recording rate list" screen will be displayed.



Step 2

Recording rate in each recording mode (shown below) for each camera channel will be displayed in list form. Numbers on the table indicate the current recording rate (ips).

- MANU: Manual recording
- SCHE: Scheduled recording
- PRE EVT: Pre-event recording
- POST EVT: Post-event recording
- EMR: Emergency recording
- SUPER FINE: Top quality (SFA/SFB)
- FINE: High quality (FQA/FQB)
- NORMAL: Standard (NQA/NQB)
- EXTENDED: Low quality (EXA/EXB)

Confirmation of available hard disk space [Disk Information]

Available disk space for the following disks will be displayed: built-in hard disk (normal recording area, event recording area and copy area), extension unit (EXT1 - 7), DVD-RAM disk, CD-R disk or DVD-R disk drive connected to the copy port on the rear panel (COPY1 and COPY2). Refer to the Network Operating Instructions (PDF) for further information about the built-in hard disk of this unit.

Settings for hard disk warning time (hour meter) can be performed with this menu.

Screenshot 1

Start operation after the submenu of the maintenance menu is displayed by clicking the [Maintenance] button in the [Setup] tab. (page 15)

Step 1

Click "Disk Information".

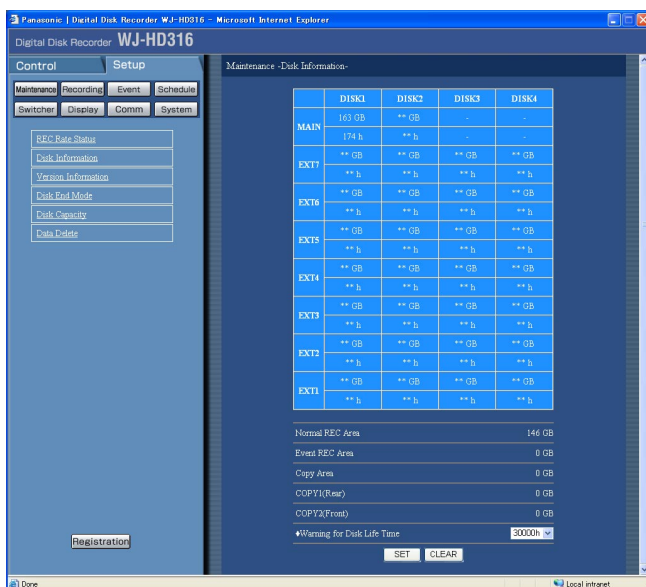


Screenshot 2

The "Disk Information" menu will be displayed.

Step 2

Available disk space for each hard disk will be displayed.



Note:

The displayed available disk space on this menu will not include the space required for data management. Therefore, the understated available disk space will be displayed.

The following settings are also available on this menu.

Warning for Disk Life Time

Select hard disk warning time from the following.
10 000 h/20 000 h/30 000 h

Step 3

Click the [SET] button after completing the settings.

Confirmation of version information [Version Information]

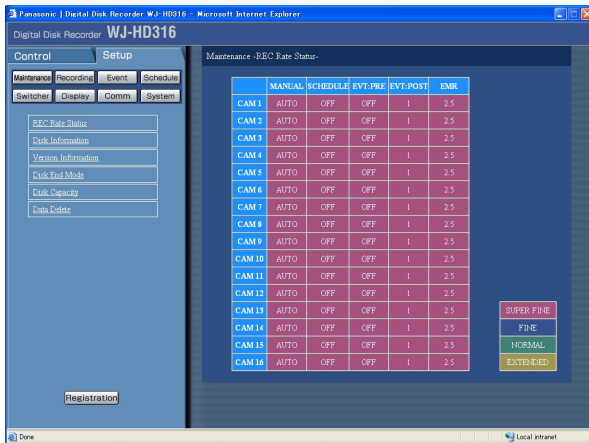
Version information of the software and hardware will be displayed.

Screenshot 1

Start operation after the submenu of the maintenance menu is displayed by clicking the [Maintenance] button in the [Setup] tab. (page 15)

Step 1

Click "Version information".



Screenshot 2

The "Version information" menu will be displayed.

Step 2

Version information of the software and hardware, and MAC address will be displayed.



Settings for actions when the available hard disk space is running out [Disk End Mode]

Settings for actions (overwrite/stop recording) when the available disk space of the built-in hard disk (normal recording area, event recording area and copy area), an external recording devices such as a DVD-RAM disk, CD-R disk or DVD-R disk drive connected to the copy port on the rear panel (COPY 1 and COPY 2) has run out can be performed.

Screenshot 1

Start operation after the submenu of the maintenance menu is displayed by clicking the [Maintenance] button in the [Setup] tab. (page 15)

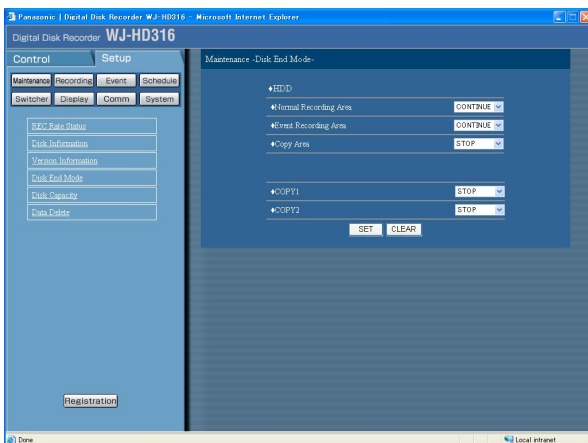
Step 1

Click "Disk End Mode".



Screenshot 2

The "Disk End Mode" menu will be displayed.



Step 2

Perform the settings for the warning action when available disk space of each area or an external recording device has run out by clicking the [✓] button.

CONTINUE: The oldest data will be overwritten and saved as new data when available space has run out.

STOP: Stops recording and copying when available space has run out.

Step 3

Click the [SET] button after completing the settings.

Note:

In case of using a CD-R or DVD-R disk, recording and copying will be canceled when the available disk space has run out, even though "CONTINUE" is selected for "Disk End Mode".

Warning settings for available hard disk space [Disk Capacity]

Performing the settings for the warning action should be done when each available space of the built-in hard disk (normal recording area, event recording area, copy area), an external recording devices such as a DVD-RAM disk, CD-R disk or DVD-R disk drive connected to the copy port on the rear panel (COPY 1 and COPY 2) reaches the set level.

Important:

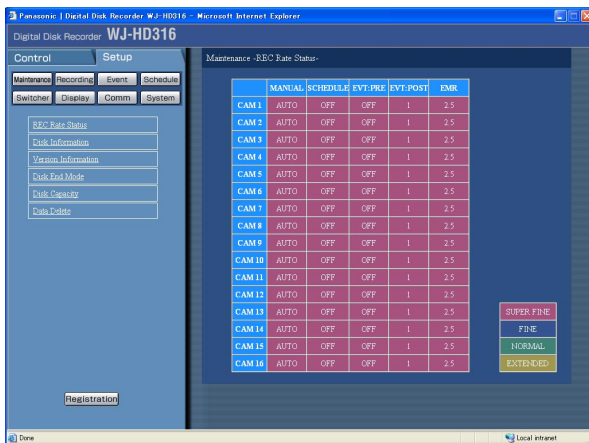
When "CONTINUE" is selected for "Disk End Mode" (page 27), a warning will not be issued.

Screenshot 1

Start operation after the submenu of the maintenance menu is displayed by clicking the [Maintenance] button in the [Setup] tab. (page 15)

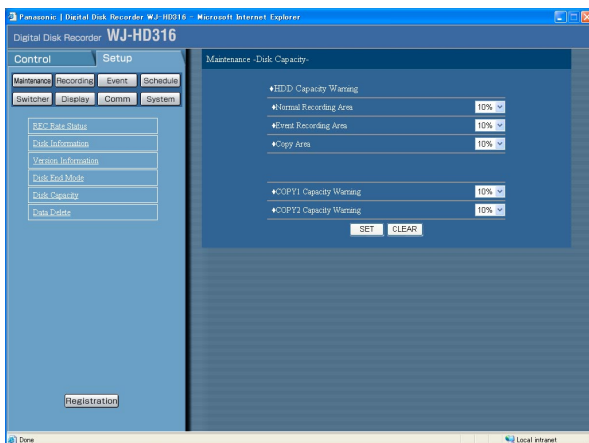
Step 1

Click "Disk Capacity".



Screenshot 2

The "Disk Capacity" menu will be displayed.



Step 2

Perform the settings for the warning action when available disk space of each area or an external recording device has run out by clicking the [√] button. 1% to 10% can be set for this item in 1% intervals. When OFF is selected, the warning action will not be performed.

Step 3

Click the [SET] button after completing the settings.

Note:

When "CONTINUE" is selected for the recording area on the "Disk End Mode" menu, the warning action will not be performed.

Deletion of image data on the hard disk [Data Delete]

Image data on the built-in hard disk will be deleted.

The two ways to delete data are auto deletion and manual deletion.

Initialization (format) of a DVD-RAM disk can be also performed on this menu.

Screenshot 1

Start operation after the submenu of the maintenance menu is displayed by clicking the [Maintenance] button in the [Setup] tab. (page 15)

Step 1

Click "Data Delete".



Step 2

Delete data in the following ways.

■ HDD Auto Delete

Perform the settings to delete image data automatically when the set days have passed the day the images were recorded.

The following days can be set. When OFF is selected, auto deletion will not be performed.

OFF/1 DAYS/2 DAYS/3 DAYS/4 DAYS/5 DAYS/
6 DAYS/7 DAYS/8 DAYS/9 DAYS/10 DAYS/
14 DAYS/30 DAYS/45 DAYS/60 DAYS/90 DAYS/
120 DAYS/150 DAYS/180 DAYS

■ Manual Delete for Normal Recording Area

By setting the time and date, images in the normal recording area of the hard disk that were recorded up until a day before the set time and date will be deleted. Enter a 4-digit number for the year when entering the time and date.

■ Manual Delete for Event Recording Area

By setting the time and date, images in the event recording area of the hard disk that were recorded up until a day before the set time and date will be deleted. Click the [DELETE] button after setting a date.

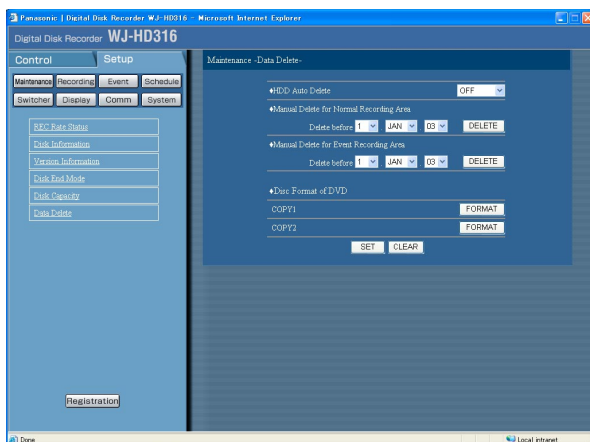
Formatting (initialization) of DVD is also available with this menu.

■ Disk Format of DVD

Initialize a DVD-RAM disk connected to the copy port on the rear panel (COPY 1 and COPY 2) by clicking the [FORMAT] button.

Screenshot 2

The "Data Delete" menu will be displayed.



Functions for recording [Recording]

Perform the settings for recording. Perform the basic settings for recording and the settings for emergency recording.

Basic settings for recording [Recording Setup]

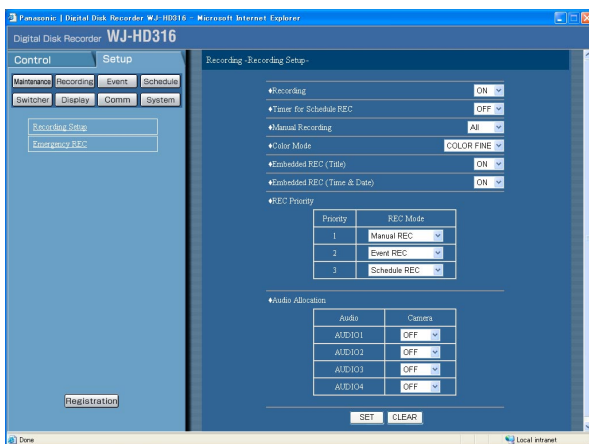
Perform the basic settings for recording.

Screenshot 1

Start operation after the submenu of the recording menu is displayed by clicking the [Recording] button in the [Setup] tab. (page 15)

Step 1

Click "Recording setup".



Screenshot 2

The "Recording setup" menu will be displayed.

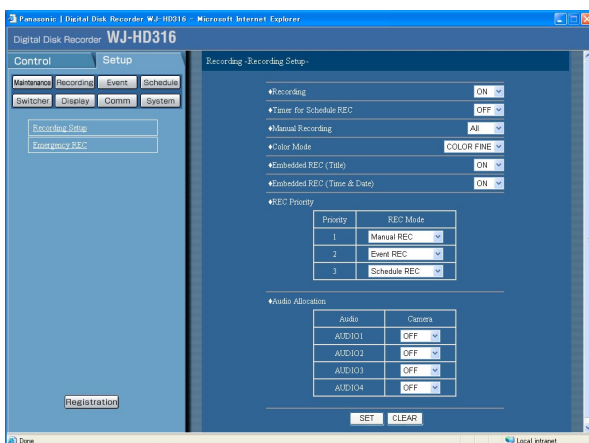
Step 2

Perform the settings for each item.

Refer to page 31 for further information about the settings for each item.

Step 3

Click the [SET] button after completing the settings.



Setup Item

■ Recording

Select ON or OFF to record or not record.

OFF: No recording will be performed.

ON: Recording will be performed.

Important:

When OFF is selected for this setting, no recordings will be performed. Select ON for normal use except when required to stop recording forcibly such as when trouble occurred with the unit.

■ Timer for Schedule REC

Select ON or OFF to determine whether or not to start recording when the power is turned on by the connected external timer (or the switch).

OFF: Manual recording will not start automatically after completing the system check.

ON: Manual recording will start automatically after completing the system check.

Important:

When ON is selected for this item, manual recording will start automatically at startup.

■ Manual Recording

Select a camera channel for manual recording from the following. Refer to the provided operating instructions for further information about manual recording.

MON2: Images from the camera channel currently displayed on monitor 2 will be recorded.

ALL: Images from all the camera channels will be recorded.

Important:

The unit records images from all camera channels when displaying images in the sequential display mode or live image even though MON2 is selected.

■ Colour Mode

Set the colour mode for recording.

COLOUR FINE: Records images in high resolution colour.

COLOUR STD: Records images in colour.

B/W: Records images in black and white.

Important:

Do not select "B/W" for color mode when any of "SFA", "FQA", "NQA" and "EXA" is selected for image quality. Otherwise, it may cause deterioration of the image quality.

■ Embedded REC (Title)

Select ON or OFF to determine whether or not to record a displayed camera title together as a part of the recorded image.

OFF: Does not record camera titles.

ON: Record camera titles together as a part of the recorded image.

■ Embedded REC (Time & Date)

Select ON or OFF to determine whether or not to record the displayed time and date together.

OFF: Does not record the time and date.

ON: Record the time and date together as a part of the recorded image.

Important:

It is possible to select ON or OFF to determine whether or not to display the camera title or the time and date recorded together with the images, even though OFF is selected for "Embedded REC (Title)" or "Embedded REC (Time & Date)" respectively. When ON is selected for "Embedded REC (Title)" or "Embedded REC (Time & Date)" respectively, it is impossible to hide the camera title and the time and date.

■ REC Priority

Assigns priorities to recording modes. Assigns priorities (1 - 3) to each recording mode.

Refer to the provided operating instructions for further information about each recording mode.

Important:

The priority of event recording will be applied for the priority of event pre-recording/post-recording. When event pre-recording and post-recording are to be performed, it is impossible to perform manual recording/schedule recording with lower priorities than the priority of event recording.

■ Audio Allocation

Allocates audio from the audio input connectors (1 - 4) on the rear panel of the unit to camera channels.

Allocate audio in accordance with channels of connected cameras. When OFF is selected, audio will not be heard.

Important:

- Audio will not be heard when operating the unit using a PC via a network.
 - Audio will be recorded regardless of whether you are displaying on a single screen or a multi-screen.
In case of using the HDD pre-recording area, audio will not be recorded when pre-recording.
-

Settings for emergency recording [Emergency REC]

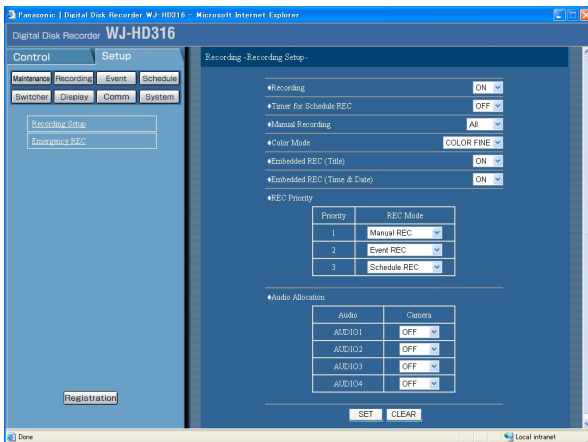
Perform the settings for emergency recording such as recording time or recording rate. Refer to the provided operating instructions for further information about emergency recording.

Screenshot 1

Start operation after the submenu of the recording menu is displayed by clicking the [Recording] button in the [Setup] tab. (page 15)

Step 1

Click "Emergency REC".



Screenshot 2

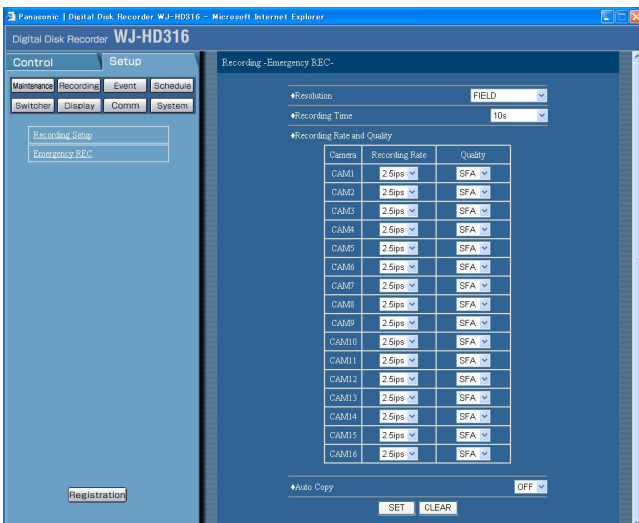
The "Emergency REC" menu will be displayed.

Step 2

Perform the settings for each item. Refer to page 34 for further information about the settings for each item.

Step 3

Click the [SET] button after completing the settings.



Setup Item

■ Resolution

Select a resolution for emergency recording from the following.

FIELD: Standard resolution (720 x 288)

FRAME 3D ON: High resolution (720 x 576) with the motion blur compensation

FRAME 3D OFF: High resolution (720 x 576)

SIF: Low resolution (360 x 288)

Important:

- It is recommended to set same value for the resolution of emergency recording as the resolution of manual recording, event recording and schedule recording.
 - Recording will not be performed for around 4 seconds from the beginning of emergency recording when the resolution is switched.
-

■ Recording Time

Perform the settings for emergency recording such as recording time and recording actions.

The following are available for recording time.

1 s - 10 s (in 1 second intervals)

20 s/30 s/1 m - 10 m (in 1 minute intervals)

20 m/30 m/40 m/50 m/60 m

MANUAL: Recording will continue while the external switch is being held down.

CONTINUE: Recording will not stop unless the [ALARM RESET] button on the front panel of the unit is pressed or the [ALARM RESET] button in the status display area is clicked.

■ Recording Rate and Quality

Perform the settings for emergency recording for each camera channel such as recording rate or image quality. The following are available for recording rate. When OFF is selected for a specified camera channel, images from a camera channel set to OFF will not be recorded. OFF/1.7 ips/2.5 ips/4.2 ips/5 ips/6.3 ips/8.3 ips/12.5 ips/25 ips/50 ips/100 ips

Important:

- The total recording rates of CAM 1 - CAM 10 must be less than 50 ips.
 - When OFF is selected for a specified camera channel, images from a camera channel set to OFF will not be recorded.
 - When "FRAME 3D ON" or "FRAME 3D OFF" is selected, the total recording rates of CAM 1 - CAM 16 (for the WJ-HD316) must be less than 25 ips.
 - When "FIELD" is selected, the total recording rates of CAM 1 - CAM 16 (for the WJ-HD316) must be less than 50 ips.
 - When "SIF" is selected, the total recording rates of CAM 1 - CAM 16 (for the WJ-HD316) must be less than 100 ips.
 - When "FRAME 3D ON", "FRAME 3D OFF" or "SIF" is selected, it is impossible to select 50 ips.
-

The following are available for image quality.

SFA/SFB: Top quality (SUPER FINE)

FQA/FQB: High quality (FINE)

NQA/NQB: Standard quality (NORMAL)

EXA/EXB: Low quality (EXTENDED)

**A is suitable for less dynamic images.

**B is suitable for more dynamic images.

■ Auto Copy

Select ON or OFF to set whether or not to automatically copy images recorded by emergency recording onto the copy area on the built-in hard disk or DVD-RAM disk.

Important:

When OFF is selected for "Auto copy" on "Basic setup" of "System", the auto copy function will not work after emergency recording even though ON is selected for this setting. Select "HDD", "COPY 1" or "COPY 2" for the auto copy setup.

Functions for events [Event]

Perform the settings for event actions of each event type (motion detection, video loss, terminal alarm and command alarm). Refer to the provided operating instructions for further information about each event type.

Basic settings for event actions [Event Setup]

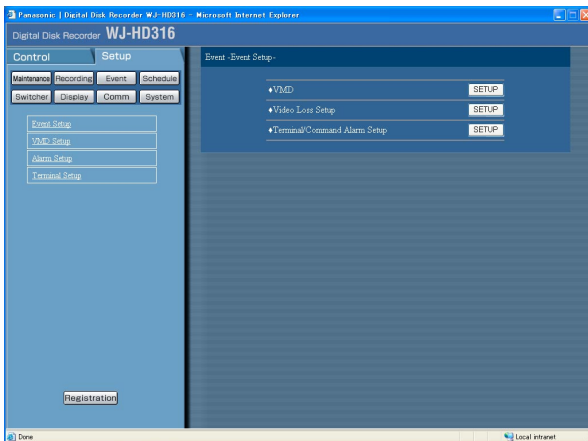
Perform the settings for event actions such as alarm output duration and buzzer duration of each camera channel for each event type (motion detection, video loss, command alarm and terminal alarm).

Important:

Alarm output duration can not be set for video loss. Signals will be supplied continuously from the camera error output terminal (pin no. 17) of the ALARM/CONTROL connector on the rear panel during the period when the video signal is lost.

Screenshot 1

Start operation after the submenu of the event menu is displayed by clicking the [Event] button in the [Setup] tab. (page 15)



Step 1

Click the respective [SETUP] button for the desired event (VMD, video loss, terminal/command alarm) to be set.

Screenshot 2

The window for selection of the event channel/number will be displayed.

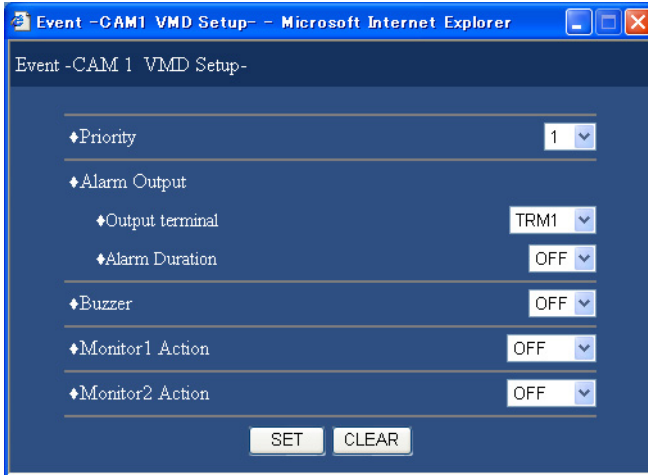


Step 2

Click the respective [SETUP] button for the desired channel/number to be set from the event selected at STEP 1.

Screenshot 3

The window for the settings of the event action for each event type will be displayed.



Setup Item

■ Priority

Assigns priorities to the selected event.

The camera will move to a preset position at an event occurrence if "Follow the priority" is selected for "Priority" of "System" menu or if the priority of the event is set to the same priority level or higher than the priority level of the user who is controlling the camera.

■ Alarm Output

Perform the settings for alarm output such as on/off to supply the alarm signal from a selected camera channel, selection of connectors (TRM 1 – TRM 16) from which the alarm signals are supplied, and the alarm output duration.

The following are available for alarm output duration.

1 s - 30 s (in 1 second intervals)/40 s/50 s/1 m/2 m/3 m/4 m/5 m

EXT: Alarm output will continue until the [ALARM RESET] button on the front panel of the unit is pressed or the [ALARM RESET] button in the status display area is clicked.

OFF: No alarm output is supplied.

Step 3

Perform the settings for each item.

Refer to the following for further information about the settings for each item.

Step 4

Click the [SET] button after completing the settings, and close the windows (the window for selection of the event channel/number, the window for the settings of the event action for each event type) by clicking the [X] button at the top right of the window.

■ Buzzer

Select ON or OFF to set whether or not to sound the buzzer at an event occurrence. The following are available for buzzer sound duration.

1 s - 30 s (in 1 second intervals)/40 s/50 s/1 m/2 m/3 m/4 m/5 m

OFF: The buzzer will not sound.

EXT: The buzzer will keep on sounding until the [ALARM RESET] button on the front panel of the unit is pressed or the [ALARM RESET] button in the status display area is clicked.

■ Actions work with an event occurrence on the monitor 1

Select a camera channel whose image is to be displayed on a single screen display channel whose 1 at an event occurrence. When OFF is selected, images displayed on monitor 1 will not be switched at an event occurrence.

■ Actions work with an event occurrence on the monitor 2

Select a camera channel whose image is to be displayed on a single screen display on monitor 2 at an event occurrence. When OFF is selected, images displayed on monitor 2 will not be switched at an event occurrence.

Settings for the motion detection function [VMD Setup]

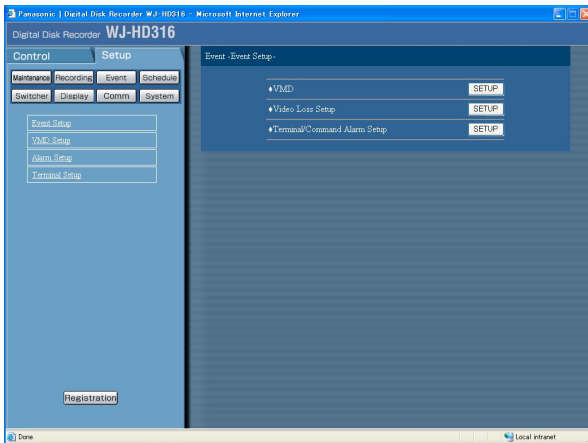
Perform the settings for the auto motion detection area for each camera channel. Up to 4 areas can be set for a camera channel for the detection area. Refer to the provided operating instructions for further information about the auto motion detection function.

Screenshot 1

Start operation after the submenu of the event menu is displayed by clicking the [Event] button in the [Setup] tab. (page 15)

Step 1

Click "VMD Setup".



Screenshot 2

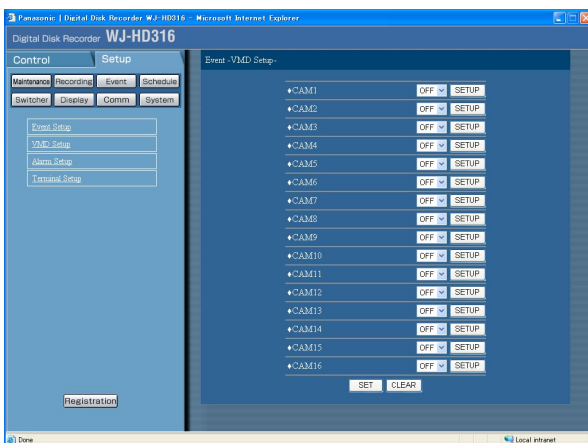
The "VMD Setup" menu will be displayed.

Step 2

Select ON for a desired camera channel and press the SET button.

Step 3

Click the respective [SETUP] button for the desired camera channel to be set.

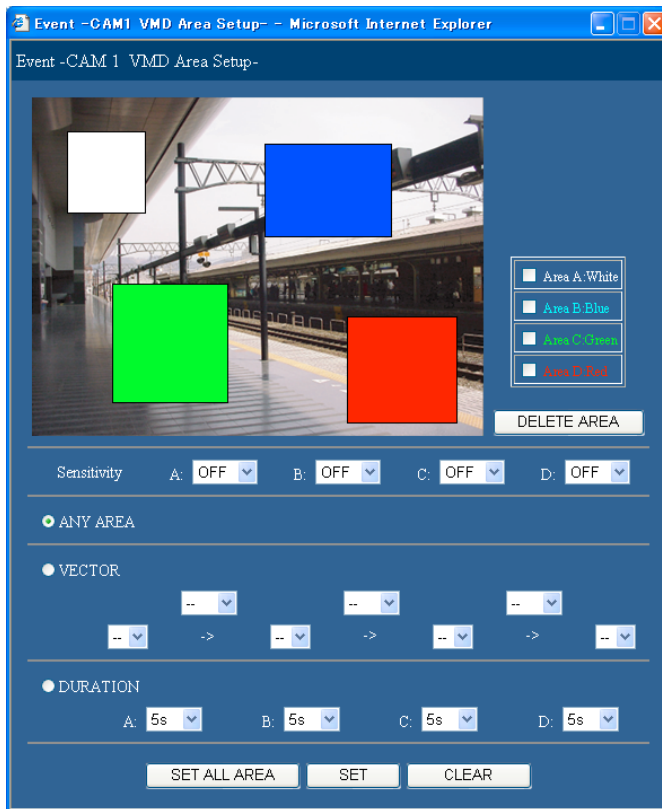


Important:

When OFF is selected for a camera channel, the motion detection function will be disabled for the camera channel.

Screenshot 3

The "VMD Area Setup" menu will be displayed.



Step 4

Set the motion detection areas by dragging the mouse. Up to 4 areas (A, B, C, D) can be set for the detection areas.

- A: White
- B: Blue
- C: Green
- D: Red

Click the [SET ALL AREA] button to set all areas on the monitor as the motion detection area.

To delete a detection area, click the [DELETE AREA] button after selecting a detection area by checking the check box of the desired area to be deleted.

Step 5

Press the [∨] button to select the sensitivity for the selected area from the following.

- OFF: No motion will be detected in this area.
- LOW: Low sensitivity
- MID: Standard sensitivity
- HIGH: High sensitivity

Step 6

Perform the settings of the detection mode (method of detection) in the set detection area. Specifying a method of detection in a detection area is available by setting the detection mode.

Refer to page 39 for further information about each recording mode.

<ANY AREA>

An event action will be performed according to the settings when "motion" is detected in any of the set motion detection areas.

<VECTOR>

Move the cursor to an area for the settings of VECTOR using the arrows button (∨) and rotate the jog dial to select an area. Move the cursor to the parameter box of the selected area using the arrows button (∨) to select an interval time for an object moving between each area from the following.

--/5 s/10 s/20 s/30 s/40 s/50 s/1 m

<DURATION>

Move the cursor to the parameter box of each area using the arrows button (∨) and rotate the jog dial to select a moving duration for an object in each area from the following.

0 s/5 s/10 s/20 s/30 s/40 s/50 s/1 m

Step 7

Click the [SET] button after completing the settings, and close the "VMD Area Setup" window by clicking the [×] button at the top right of the window.

Detection mode

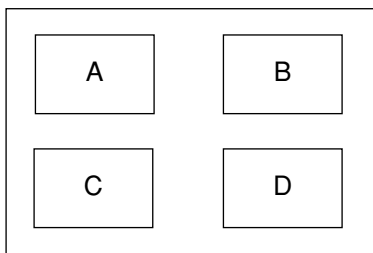
There are three detection modes as follows.

Important:

Activating two or more detection modes simultaneously is not possible.

<ANY AREA mode>

An event action will be performed according to the settings when "motion" is detected in any of the set motion detection areas.

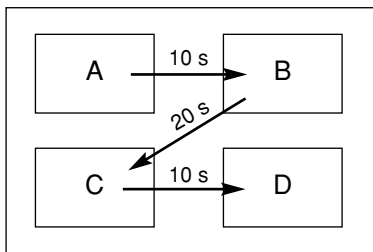


Any motion will be detected anywhere in the A, B, C, D areas.

<VECTOR mode>

An event action will be performed according to the settings when an object moves within the set time to the other detection area in the set order.

The following is an example.



Motion is detected in area B within 10 seconds after being detected in area A.

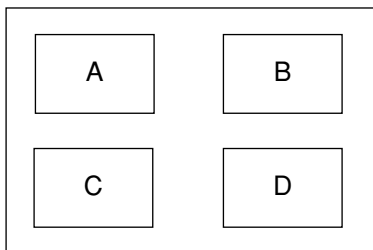
Motion is detected in area C within 20 seconds after being detected in area B.

Motion is detected in area D within 10 seconds after being detected in area C.

When all of the above have occurred, an event action will be performed.

<DURATION mode>

An event action will be performed according to the settings when an object keeps on moving for the set period in the detection area. For example, in case of the following settings; 10 sec. for the area A and B, 20 sec. for area C and 30 sec. for area D:



Settings for alarm display and alarm suspension [Alarm Setup]

Perform the settings for the alarm displaying duration. The alarm display will automatically disappear when the displaying duration has passed. (Alarm Auto Reset)

The following will be performed even if OFF is selected for the "Alarm Auto Reset".

- The ALARM indicator will stop blinking and light steadily
- The displayed event information will disappear
- The buzzer will stop beeping

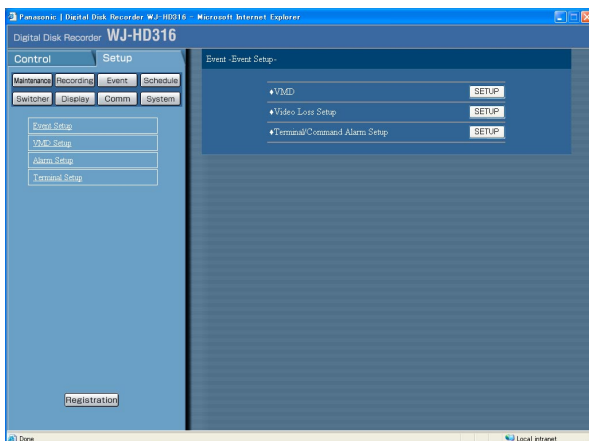
Perform the settings to suspend the set duration when the same type of event (motion detection, video loss, terminal/command alarm) has occurred sequentially so that the event action will not be performed each time. (Alarm suspension)

Screenshot 1

Start operation after the submenu of the event menu is displayed by clicking the [Event] button in the [Setup] tab. (page 15)

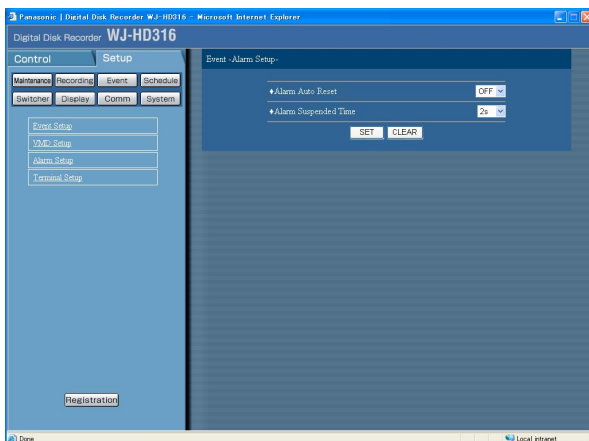
Step 1

Click "Alarm Setup".



Screenshot 2

The "Alarm Setup" menu will be displayed.



Step 2

Select the alarm display duration and the alarm suspension duration by clicking the [✓] button.

■ Alarm Auto Reset

The following are possible for the alarm display duration. When OFF is selected, the alarm display will not automatically disappear.

OFF/1 s - 30 s (in 1 second intervals)
40 s/50 s/1 m/2 m/3 m/4 m/5 m

■ Alarm Suspended Time

The following are possible for the alarm suspension duration.

2 s - 10 s (in 1 second intervals)

Step 3

Click the [SET] button after completing the settings.

Settings for the alarm terminal polarity [Terminal Setup]

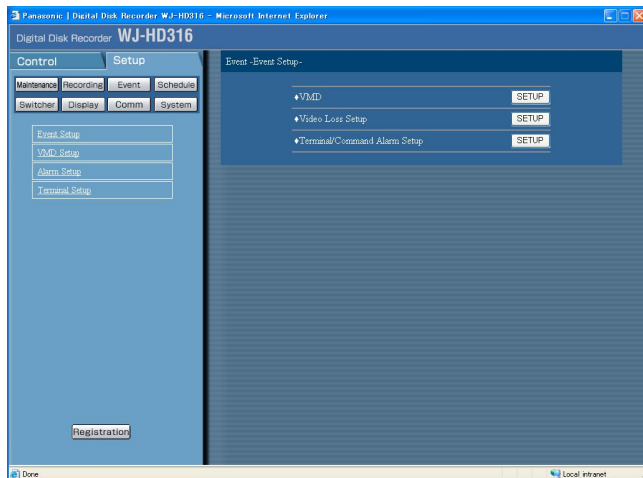
Select how to supply the signal to the alarm terminal.

Screenshot 1

Start operation after the submenu of the event menu is displayed by clicking the [Event] button in the [Setup] tab. (page 15)

Step 1

Click "Terminal Setup".



Screenshot 2

The "Terminal Setup" menu will be displayed.

Step 2

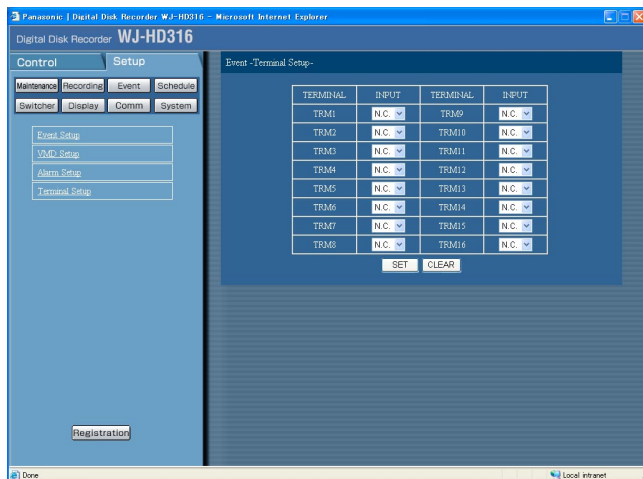
Select polarities for each terminal by clicking the [V] button.

N.O.: Signals will be supplied when open-circuited. (Normally Open)

N.C.: Signals will be supplied when short-circuited. (Normally Closed)

Step 3

Click the [SET] button after completing the settings.



Settings for the recording/event schedule [Schedule]

Perform the settings for the recording schedules of recording and event action by designating a day of the week and time.

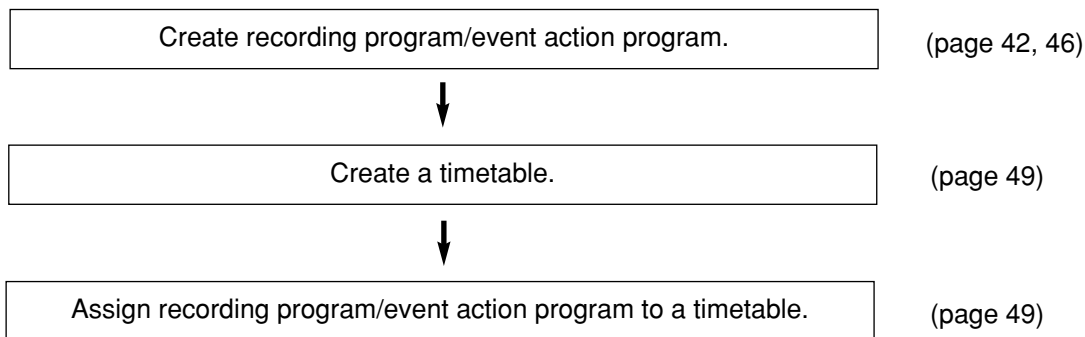
A day can be divided into up to 6 time zones, and recording programs and event action programs can be assigned to each time zone to create a recording schedule.

Up to 4 normal recording programs and up to 4 event action programs can be created. Perform the settings for the recording programs: resolution and recording rate. Perform the settings for the Event program: action mode for each event type and auto copy.

It is possible to create special days apart from the normal schedule, and a recording program of another day of the week can be switched to a special day's program automatically.

Flowchart how to create a schedule

Follow the procedures below to create schedules.



Creating a recording program [REC Program]

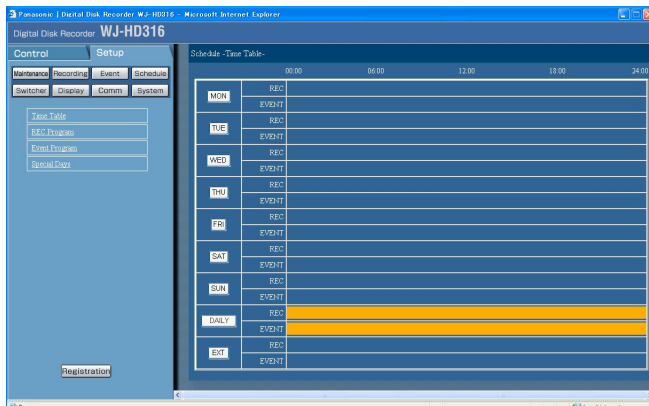
Perform the settings of resolution, and recording rate for each recording mode, and the recording rate and image quality of each camera channel. Up to 4 recording programs can be created.

Screenshot 1

Start operation after the submenu of the schedule menu is displayed by clicking the [Schedule] button in the [Setup] tab. (page 15)

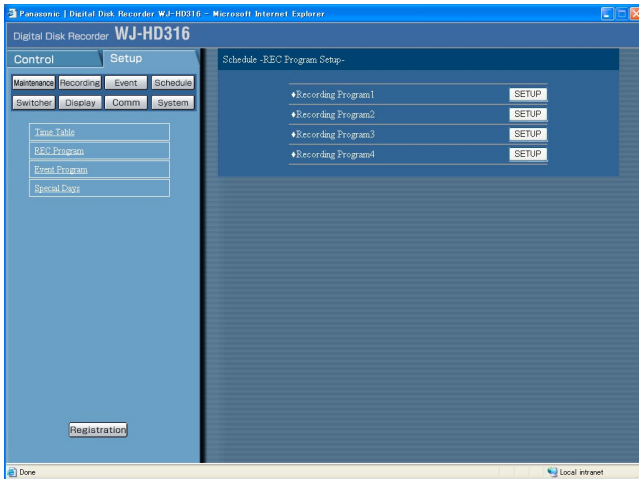
Step 1

Click "REC Program".



Screenshot 2

The "REC Program" menu will be displayed.

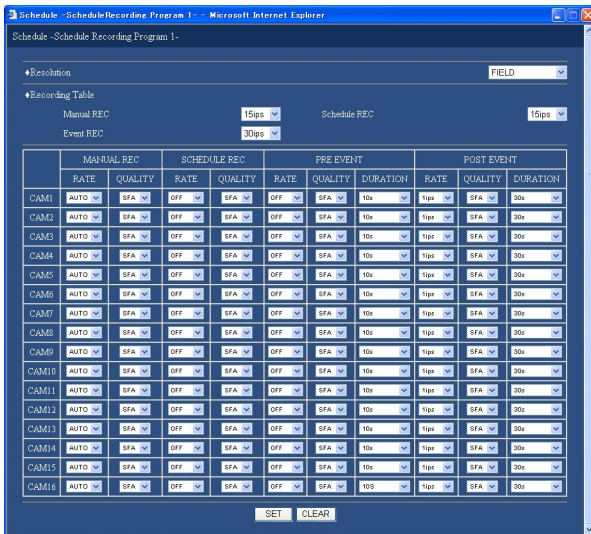


Step 2

Click the respective [SETUP] button for a desired program to create a recording program.

Screenshot 3

The "Schedule Recording Program" menu will be displayed.



Step 3

Perform the settings for each item. Refer to page 44 for further information about the settings for each item.

Step 4

Click the [SET] button after completing the settings, and close the "REC Program" window by clicking the [x] button at the top right of the window.

Setup Item

■ Resolution

Select a resolution for images to be recorded from the following.

FIELD: Standard resolution (720 x 288)

FRAME 3D ON: High resolution (720 x 576), with blurring compensation

FRAME 3D OFF: Standard resolution (720 x 576)

SIF: Low resolution (360 x 288)

Important:

In the following cases, recording will not be performed for around 4 seconds:

- When resolution switched such in case that different resolution is set depending on different time zones
 - When the SETUP MENU is closed after changing the settings
-

■ Recording Rate for Each Recording Mode

Perform the settings of recording rate for each recording mode (manual recording, schedule recording and event recording).

Assign the maximum recording rate according to the resolution for each recording mode.

The following are the maximum recording rate for each resolution.

Resolution	Maximum recording rate
FRAME 3D ON	25 ips
FRAME 3D OFF	25 ips
FIELD	50 ips
SIF	100 ips

The following are available for the recording rate for each resolution.

OFF/1.7 ips/2.5 ips/4.2 ips/5 ips/6.3 ips/8.3 ips/12.5 ips/25 ips/50 ips/100 ips

Important:

- When "FRAME" is selected for "Resolution", "50 ips" and "100 ips" are not available. When "FIELD" is selected, "100 ips" is not available.
- The total recording rates for each recording mode must be less than the maximum recording rate of each resolution.

Examples: When "FIELD" is selected and set, the total recording rates for each recording mode must be less than 50 ips.

Manual recording: 12.5 ips

Schedule recording: 12.5 ips

Event recording: 25 ips

■ Recording Rate and Image Quality for Each Camera Channel

Perform the settings for recording rate, image quality and recording duration for each camera channel (only for event pre-recording and event post-recording).

Perform the settings for each recording mode.

Perform the settings for each recording mode. Assign the recording rate for each camera channel as described in "Recording Rate for Each Recording Mode" above.

The following are the for recording rate. When OFF is selected, images from the selected camera channel will not be recorded.

AUTO: Recording rate will be set automatically. (Not possible for event pre-recording and event post-recording)

0.1 ips/0.2 ips/0.3 ips/0.4 ips/0.5 ips/1 ips/1.7 ips/2.5 ips/4.2 ips/5 ips/6.3 ips/8.3 ips/12.5 ips/25 ips/50 ips/OFF

Important:

- The total recording rates of each camera channels in the same recording mode must be less than the recording rate as described in "Recording Rate for Each Recording Mode" above.

Examples: When selecting "FIELD" for resolution, "15 ips" for manual recording, "15 ips" for schedule recording, "30 ips" for event recording:

Total recording rates of CAM 1 - 16 (manual recording): less than 15 ips

Total recording rates of CAM 1 - 16 (schedule recording): less than 15 ips

Total recording rates of CAM 1 - 16 (event recording): less than 30 ips

- The total recording rates between recording rates of event pre-recording and recording rates of event post-recording for each camera channel must be less than the recording rate as described in "Recording Rate for Each Recording Mode" above.
-

The following are available for image quality.

SFA/SFB: Top quality (SUPER FINE)
FQA/FQB: High quality (FINE)
NQA/NQB: Standard quality (NORMAL)
EXA/EXB: Low quality (EXTENDED)

**A is suitable for less dynamic images.

**B is suitable for more dynamic images.

The following are available for recording duration (only event pre-recording and event post-recording).

1 - 10 s (in 1 second intervals)/20 s/30 s/1 - 10 m (in 1 minute intervals)/20-60 m (in 10 minutes intervals)

MANUAL: Recording duration will be as follows depending on the event type.

- At a terminal alarm occurrence: During the supply of a signal
- At a video loss occurrence: During a video loss occurrence
- At a command alarm: For 8 seconds
- At a motion detection: For 8 seconds

CONTINUE: Recording will not stop unless the [ALARM RESET] button on the front panel of the unit is pressed or the [ALARM RESET] button in the status display area is clicked.

Notes:

- When performing event pre-recording from a camera channel that does not have its own event pre-recording area, recording time of pre-recording will differ depending on the settings of "Resolution" and "Recording Rate and Quality" for event pre-recording. When the set recording time is longer than the maximum possible recording time, the setting will not be applied even though the SET button is clicked in step 4.
 - When performing event pre-recording from a camera channel that has its own event pre-recording area, recording time of pre-recording will differ depending on the capacity of recording area, the setting of "Resolution" and "Recording Rate and Quality" for event pre-recording. When the set recording time is longer than the maximum possible recording time, the setting will not be applied even though the SET button is clicked in step 4. Refer to the Operating Instructions (book) for further information about pre-recording area.
-

Creating recording programs for an event occurrence [Event Program]

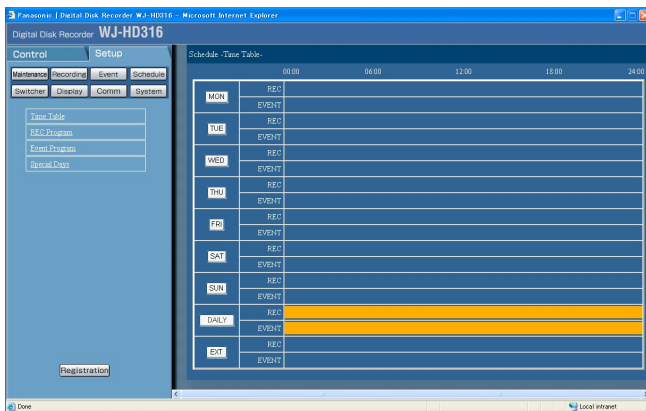
Perform the settings of action mode or alarm mail for each event type (motion detection, video loss, terminal/command alarm).

Screenshot 1

Start operation after the submenu of the schedule menu is displayed by clicking the [Schedule] button in the [Setup] tab. (page 15)

Step 1

Click "Event Program".

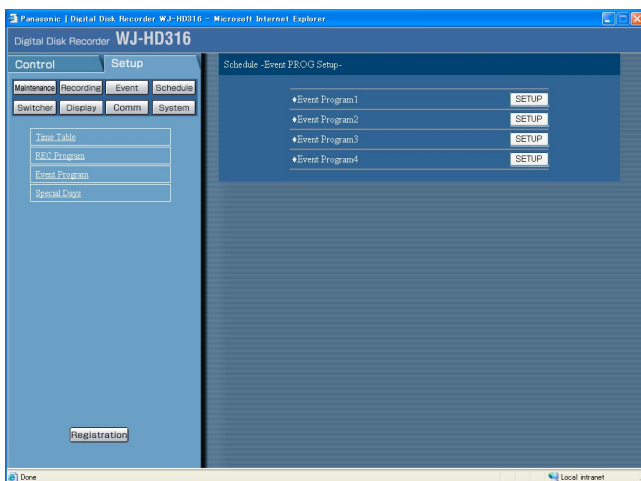


Screenshot 2

The "Event PROG Setup" menu will be displayed.

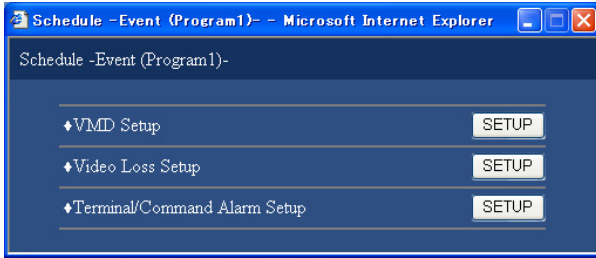
Step 2

Click the respective [SETUP] button for a desired event program to be set.



Screenshot 3

The event program menu will be displayed.



Step 3

Click the respective [SETUP] button for a desired event to be set.

Screenshot 4

The window for selection of the event channel/number will be displayed.



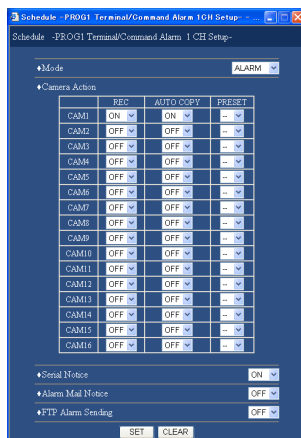
Step 4

Click the respective [SETUP] button for a desired event channel/number to be set.

<When "VMD" is selected>

Screenshot 5

The setup menu for the event action will be displayed.



Step 5

Perform the settings for each item.
Refer to page 48 for further information about the settings for each item.

Step 6

Click the [SET] button after completing the settings, and close the windows (the event program menu, the window for selection of the event channel/number, the setup menu for the event action) by clicking the [X] button at the top right of the window.

Setup Item

■ Action Mode

Perform the settings for the action mode. Refer to the Network Operating Instructions (PDF) for further information about each mode.

ACT DET (Activity Detection Mode): Performs only recording, writing an event log and camera movement to a preset position at an event occurrence. Other event actions will not be performed.

ALARM (Alarm Mode): Performs every event action according to the settings.

■ Camera Action

Performs the settings for camera action for each camera channel at an event occurrence.

REC: Select ON or OFF to set whether or not to record images from the selected camera channel.

Auto Copy: Auto copy is the function to copy recorded images automatically onto the copy area of the hard disk or the DVD-RAM disk. Select ON or OFF to enable or disable the auto copy function.

Preset Position: Determine whether or not to move the selected camera to a preset position registered in advance. Select a preset number registered in advance. When "-" is selected, a camera will not move to a preset position.

Important:

- When "OFF" is selected for "Auto copy" of "Basic Setup" on "System", the auto copy function will not work even though "ON" is selected for this setting. Select "HDD", "COPY 1" or "COPY 2" for "Auto copy".
 - Images recorded (by event pre-recording) in the pre-recording area on the hard disk will not be copied automatically.
-

■ Serial Notice

Select ON or OFF to determine whether to notify an event occurrence using PS-Data (or RS232C) or not.

■ Alarm Mail Notice

Select ON or OFF to determine whether to send alarm mail at event occurrence or not.

Refer to page 79 for descriptions of how to use the mail function such as the settings of the mail server address and the mail address of the recipient.

■ FTP Alarm Sending

Select ON or OFF to determine whether or not to send images to the FTP server at an event occurrence.

Refer to the provided Operating Instructions or the Network Operating Instructions (PDF) for further information about the actions at an event occurrence.

Important:

- Refer to the provided Operating Instructions (book) or the Network Operating Instructions (PDF) for further information about the actions at an event occurrence.
 - It is possible to browse image files (filename.h3r) transmitted to the FTP server using the viewer software. Refer to the Network Operating Instructions (PDF) for descriptions of how to operate the viewer software.
-

Assignment of recording program and event program after setting the time zone [Time Table]

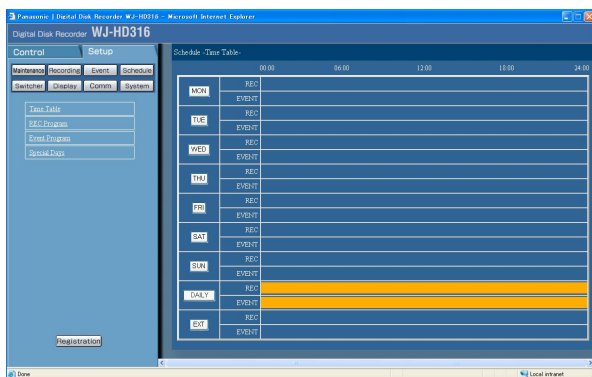
Create recording timetables for each day of the week, and assign recording program and event program to each timetable. Up to 6 recording programs can be created.

Screenshot 1

Start operation after the submenu of the schedule menu is displayed by clicking the [Schedule] button in the [Setup] tab. (page 15)

Step 1

Click [Time Table].

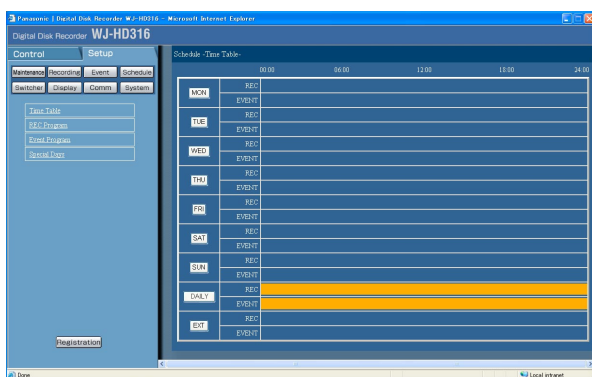


Screenshot 2

The "Time Table" menu will be displayed.

Step 2

Click the button of the desired day of the week.

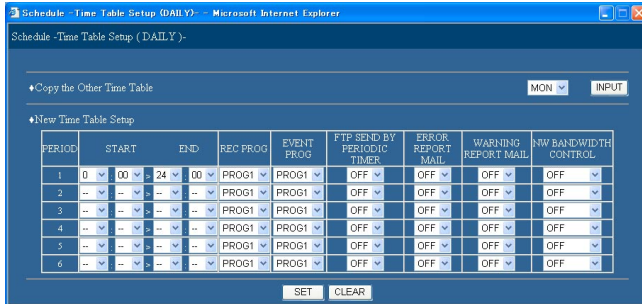


Note:

When a signal is supplied from the ALARM/CONTROL connector (external recording changeover, pin no. 24), the unit will work with the set timetable for "EXT."

Screenshot 3

The timetable of the selected day of the week will be displayed.



Notes:

- To copy a timetable that is set for a different day of the week, click the [INPUT] button of "Copy the Other Time Table" at step 3.
- To set for two or more days of the week, repeat steps 2 to 4.

Step 3

Perform the settings for each item.
Perform the settings of the following item for each time zone.

[START]

Set the start time of the time zone.

[END]

Set the end time of the time zone.

[REC PROG]

Select a desired "REC PROG".

[EVENT PROG]

Select a desired "EVENT PROG".

[FTP SEND BY PERIODIC TIMER]

Perform the settings of "Periodical transmission" on "Network FTP Setup" of the "Comm" menu (page 76) first, and select ON or OFF to determine whether or not to send images to the FTP server periodically.

Note:

It is possible to browse image files (filename.go1) transmitted to the FTP server using the viewer software. Refer to the Network Operating Instructions (PDF) for descriptions of how to operate the viewer software.

[ERROR REPORT MAIL]

Select ON or OFF to determine whether or not to send an error mail when a trouble occurred. Refer to page 98 for further information about error mail.

[WARNING REPORT MAIL]

Select ON or OFF to determine whether or not to send an error mail when the available hard disk space of the copy area or an external recording disk (DVD-RAM disk, DVD-R disk, CD-R disk) is less than the set level, or when the disk has no more available disk space. Refer to page 98 for further information about error mail.

Note:

Refer to page 79 for descriptions of how to use the mail function such as the settings of the mail server address and the mail address of the recipient.

[NW BANDWIDTH CONTROL]

Select a rate for transmission to the FTP server from the following.

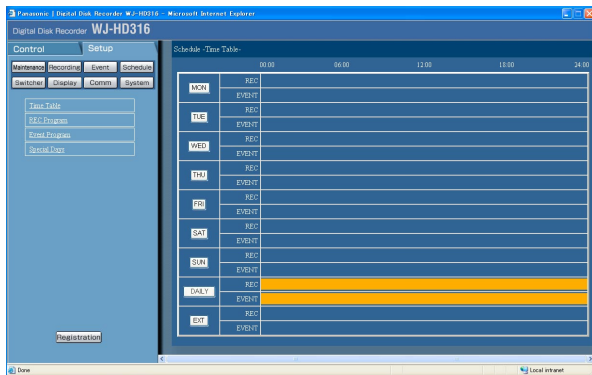
OFF/32 kbps/64 kbps/128 kbps/256 kbps/512 kbps/
1 024 kbps/2 Mbps/5 Mbps/10 Mbps

Step 4

Click the [SET] button after completing the settings, and close window (the timetable of the selected day of the week) by clicking the [X] button at the top right of the window.

Screenshot 4

Returns to the Schedule setup menu.



Step 4

The set timetables and the recording programs or the event programs will be applied.

Recording programs will be displayed with different colours.

Recording program 1/event program 1: Orange

Recording program 2/event program 2: Yellow

Recording program 3/event program 3: Yellowish green

Recording program 4/event program 4: Light blue

Perform the settings of recording programs for special days [Special Days]

Assign timetables to special days aside from other days of the week. Timetables for special days can be set for up to 30 days.

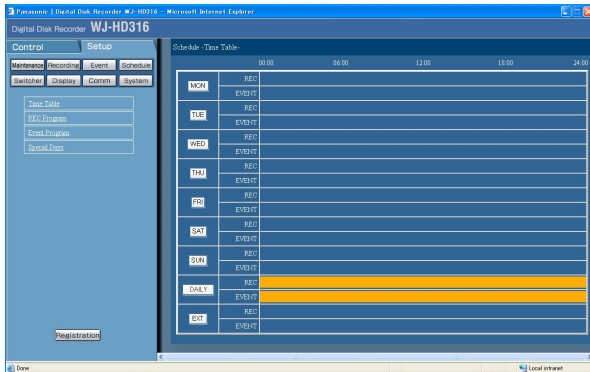
Perform the settings to specify dates as special days and apply recording schedule to the specified special days.

Screenshot 1

Start operation after the submenu of the schedule menu is displayed by clicking the [Schedule] button in the [Setup] tab. (page 15)

Step 1

Click "Special Days".



Screenshot 2

The "Special Days Setup" menu will be displayed.

Step 2

Select date to be set as special day and the recording program to be assigned to the special day.

Step 3

Click the [SET] button after completing the settings.



Settings for switcher function [Switcher]

Perform the settings for image switching such as the sequential display setting or the login window display setting to display on monitors 1, 2 or a monitor of a PC connected to the unit via a network.

Switcher function of monitor 1 [Monitor 1]

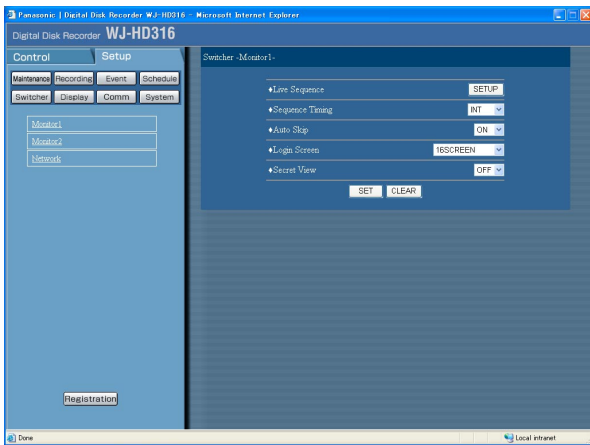
Perform the settings for the switcher function of monitor 1.

Screenshot 1

Start operation after the submenu of the switcher menu is displayed by clicking the [Switcher] button in the [Setup] tab. (page 15)

Step 1

Click "Monitor 1".

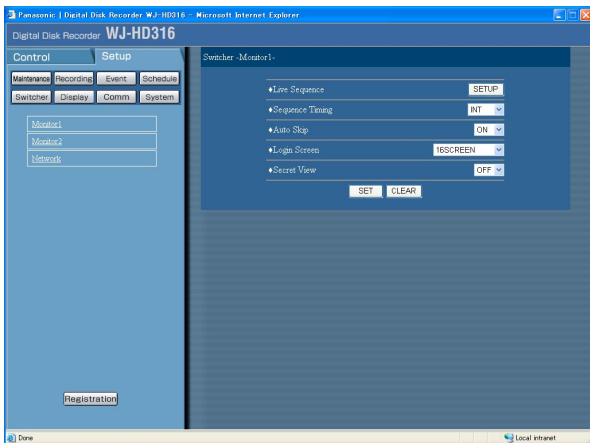


Screenshot 2

The "Monitor 1" menu will be displayed.

Step 2

Perform the settings for each item. Refer to page 54 for further information about the settings for each item.



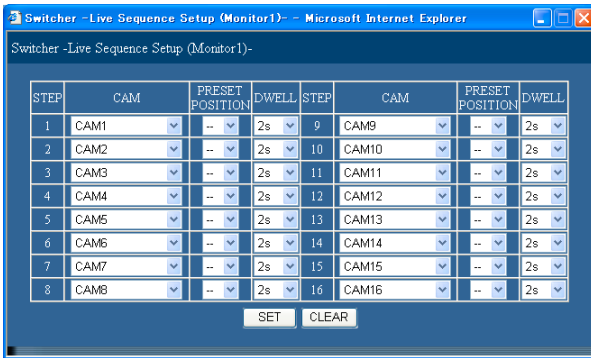
Step 3

Click the [SET] button after completing the settings.

Setup Item

■ Live Sequence

Perform the settings for the sequential display of live images. The following window will be displayed when the [Setup] button is clicked. Perform the settings for each item. Click the [SET] button after completing the settings, and close window by clicking the [X] button at the top right of the window.



[CAM]

Select a camera image to be displayed at each step.

--: Skips the selected step.

CAM1 - 16: Displays an image from the selected camera channel on a single screen.

QUAD1 - 4: Displays images from the camera channels 1 - 4 on a 4-split screen.

QUAD5 - 8: Displays images from the camera channels 5 - 8 on a 4-split screen.

QUAD9 - 12 (only for the WJ-HD316): Displays images from the camera channels 9 - 12 on a 4-split screen.

QUAD13 - 16 (only for the WJ-HD316): Displays images from the camera channels 13 - 16 on a 4-split screen.

9SCREEN1 - 9: Displays images from the camera channels 1 - 9 on a 9-split screen.

9SCREEN10 - 16 (only for the WJ-HD316): Displays images from the camera channels 10 - 16 on a 9-split screen.

[PRESET POSITION]

Select a camera position from the following.

1 - 64: Moves to the selected preset position.

--: Does not move to any of the preset position.

[DWELL]

Select an interval time to go to the next sequential step from 1 - 30 seconds (in 1 second intervals).

■ Sequence Timing

Select an image switching way from the following.

INT: Switches images according to the settings for the live sequence.

EXT: Switches images by signals from an external device.

MON 2: Match with the image switching timing of the live sequence on monitor 2.

■ Auto Skip

Select ON or OFF to determine whether or not to skip the camera channel without supplying video input signal because it is not connected, etc..

OFF: Displays a black screen for a channel not connected.

ON: Skips a channel if it is not connected.

■ Login Screen

Select a camera image to be displayed during the login procedure from the following.

--: No camera image will be displayed (screen in black)

CAM1 - 16: Displays an image from the selected camera channel.

QUAD1 - 4: Displays images from the camera channels 1 - 4 on a 4-split screen.

QUAD5 - 8: Displays images from the camera channels 5 - 8 on a 4-split screen.

QUAD9 - 12: Displays images from the camera channels 9 - 12 on a 4-split screen.

QUAD13 - 16: Displays images from the camera channels 13 - 16 on a 4-split screen.

7SCREEN: Displays images from the camera channels 1 - 7 on a 7-split screen.

9 SCREEN1 - 9: Displays images from the camera channels 1 - 9 on a 9-split screen.

9SCREEN10 - 16 (only for the WJ-HD316): Displays images from the camera channels 10 - 16 on a 9-split screen.

10SCREEN (only for the WJ-HD316): Displays images from the camera channels 1 - 10 on a 10-split screen.

13SCREEN (only for the WJ-HD316): Displays images from the camera channels 1 - 13 on a 13-split screen.

16SCREEN (only for the WJ-HD316): Displays images from the camera channels 1 - 16 on a 16-split screen.

SEQ: Displays images from camera channels sequentially according to the settings performed in advance.

■ Secret View

The secret view is a function that skips camera images displayed with a single screen display on monitor 2 when displaying with the sequential display on monitor 1. Select ON or OFF to determine whether to enable or disable the secret view function.

OFF: Disables the secret view function.

ON: Enables the secret view function. (Camera image displayed with a single screen on monitor 2 on a black screen.)

Switcher function of monitor 2 [Monitor 2]

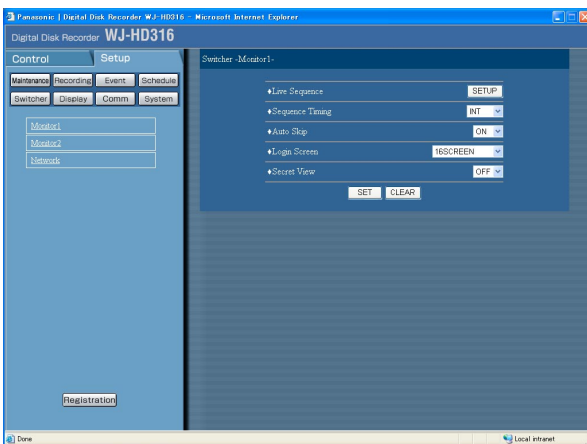
Perform the setting for the switcher function of monitor 2.

Screenshot 1

Start operation after the submenu of the switcher menu is displayed by clicking the [Switcher] button in the [Setup] tab. (page 15)

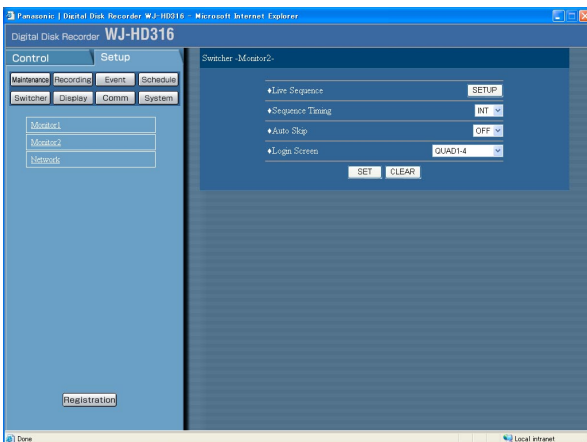
Step 1

Click "Monitor 2".



Screenshot 2

The "Monitor 2" menu will be displayed.



Step 2

Perform the settings for the switcher function. The settings for monitor 2 are the same as the settings for monitor 1.

(However, the setting for the secret view function is not available.)

Refer to page 54 for further information about the settings for each item.

Step 3

Click the [SET] button after completing the settings.

Perform the settings to display on a PC monitor with the switcher function [Network]

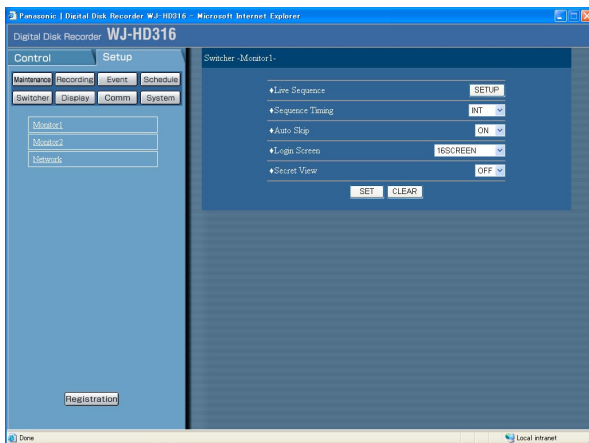
Perform the settings for the switcher function when displaying images on a monitor of a PC connected to this unit via a network.

Screenshot 1

Start operation after the submenu of the switcher menu is displayed by clicking the [Switcher] button in the [Setup] tab. (page 15)

Step 1

Click "Network".

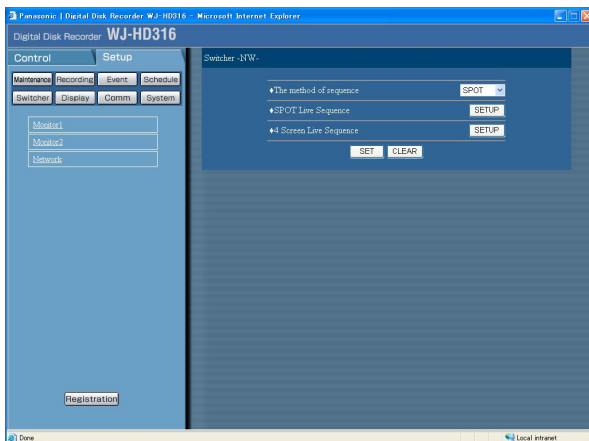


Screenshot 2

The "NW" menu will be displayed.

Step 2

Perform the settings for each item. Refer to page 57 for further information about the settings for each item.



Step 3

Click the [SET] button after completing the settings.

Setup Item

■ The method of sequence

Perform the settings for the sequential display of live images.

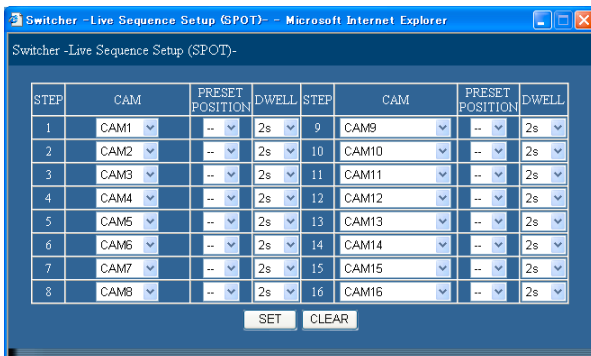
SPOT: Displays images with the sequential display on a single screen.

4 screen: Displays images with the sequential display on a 4-split screen.

■ SPOT Live Sequence

Perform the settings for the sequential display when displaying images with the sequential display on a single screen.

The following window will be displayed when the [Setup] button is clicked. Perform the settings for each item. Click the [SET] button after completing the settings, and close window by clicking the [X] button at the top right of the window.



[CAM]

Select a camera image (CAM 1 - 16) to be displayed at each step.

[PRESET POSITION]

Select a camera position from the following.

1 - 64: Moves to the selected preset position.

--: Does not move to any of the preset position.

[DWELL]

Select an interval time to go to the next sequential step from 1 - 30 seconds (in 1 second intervals).

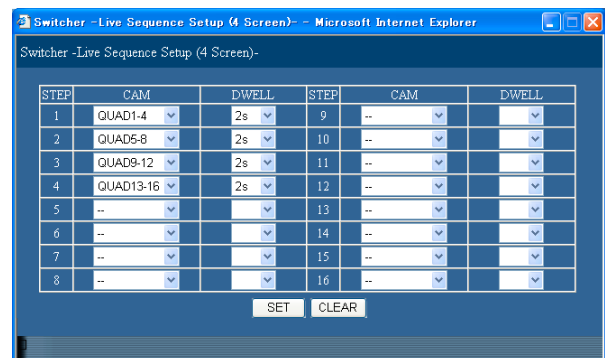
Note:

Depending on the network traffic, the sequential display may not work exactly with the set interval time for [DWELL].

■ 4 Screen Live Sequence

Perform the settings for the sequential display when displaying images with the sequential display on 4-split screen.

The following window will be displayed when the [Setup] button is clicked. Perform the settings of each item. Click the [SET] button after completing the settings, and close window by clicking the [X] button at the top right of the window.



[CAM]

Select a camera image to be displayed at each step from the following.

--: Skips the selected step.

QUAD1 - 4: Displays images from the camera channels 1 - 4 on a 4-split screen.

QUAD5 - 8: Displays images from the camera channels 5 - 8 on a 4-split screen.

QUAD9 - 12 (only for the WJ-HD316): Displays images from the camera channels 9 - 12 on a 4-split screen.

QUAD13 - 16 (only for the WJ-HD316): Displays images from the camera channels 13 - 16 on a 4-split screen.

[DWELL]

Select an interval time to go to the next sequential step from 1 - 30 seconds (in 1 second intervals).

Note:

Depending on the network traffic, the sequential display may not work exactly with the set interval time for [DWELL].

Settings for display [Display]

Perform the display settings for monitors 1 and 2 connected to the unit.

Common setting for monitors [OSD Setup]

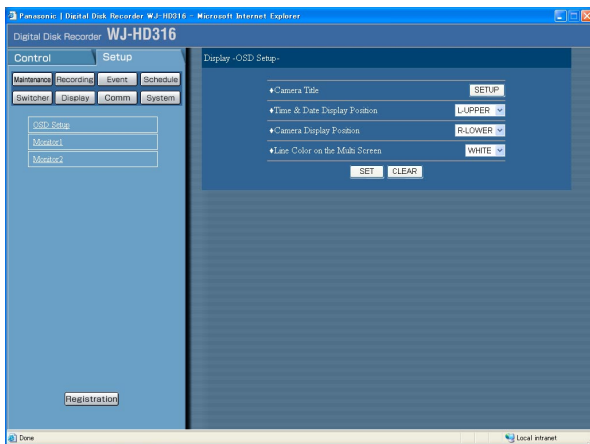
Perform the common display settings for monitor 1 and monitor 2 such as the settings of camera titles or the settings of the time display position.

Screenshot 1

Start operation after the submenu of the display menu is displayed by clicking the [Display] button in the [Setup] tab.(page 15)

Step 1

Click "OSD Setup".



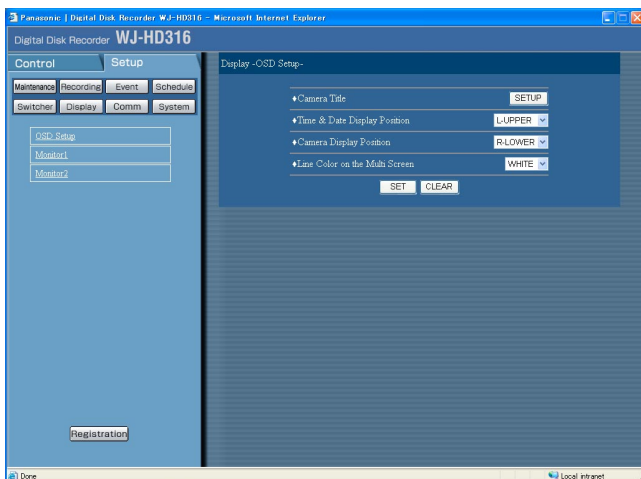
Screenshot 2

The "OSD Setup" menu will be displayed.

Step 2

Perform the settings for each item.

Refer to page 59 for further information about the settings for each item.



Step 3

Click the [SET] button after completing the settings.

Setup item

■ Camera Title

Perform the settings for the camera title.

The following window will be displayed when the [SETUP] button is clicked. Perform the settings for each item.

Click the [SET] button after completing the settings, and close window by clicking the [X] button at the top right of the window.

Camera	Display	Embedded
CAM1	1	1
CAM2	2	2
CAM3	3	3
CAM4	4	4
CAM5	5	5
CAM6	6	6
CAM7	7	7
CAM8	8	8
CAM9	9	9
CAM10	10	10
CAM11	11	11
CAM12	12	12
CAM13	13	13
CAM14	14	14
CAM15	15	15
CAM16	16	16

SET CLEAR

[Display]

Enter a camera title to be displayed on monitor 2. Enter up to 16 alphanumeric characters for a camera title.

[Embedded]

Enter a camera title to be embedded together (recorded with images) and to be displayed when "ON" is selected for "Title embed" on "Basic recording setup" of "Recording" menu and also for displaying camera titles on monitor 1 (page 31). Enter up to 16 alphanumeric characters for a camera title.

The following characters can be entered:

A B C D E F G H I J K L M N O P Q R S T U V W X Y Z
a b c d e f g h i j k l m n o p q r s t u v w x y z 0 1 2 3 4 5
6 7 8 9 "# ()*+, - ./: ; SP

■ Time & Date Display Position

Select a time display position from the following.

When the settings are performed to record images with the time display together, the time display position will be determined on this setting. Refer to page 31 for further information about embedding the time display.

L - UPPER: Displays a camera title at the upper left of the screen.

L - LOWER: Displays a camera title at the lower left of the screen.

R - UPPER: Displays a camera title at the upper right of the screen.

R - LOWER: Displays a camera title at the lower right of the screen.

■ Camera Display Position

Select a camera title display position from the following.

When the settings are performed to record images with a camera title together, the camera title position will be determined on this setting. Refer to page 31 for further information about embedding a camera title.

L - UPPER: Displays a camera title at the upper left of the screen.

L - LOWER: Displays a camera title at the lower left of the screen.

R - UPPER: Displays a camera title at the upper right of the screen.

R - LOWER: Displays a camera title at the lower right of the screen.

CENTRE: Displays a camera title at the centre of the screen.

■ Line Colour on the Multi screen

Select a parting line colour from the following.

WHITE: Displays white parting lines.

GREY: Displays grey parting lines.

BLACK: Displays black parting lines.

Perform the display settings for monitor 1 [Monitor 1]

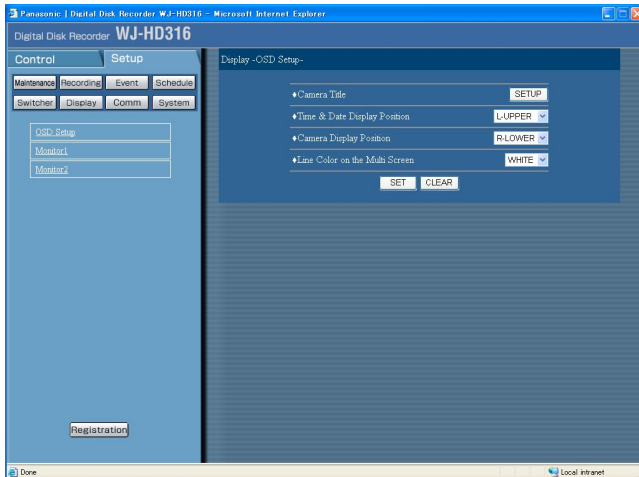
Select ON or OFF to determine whether to display the time, camera title and alarm display on monitor 1 or not.

Screenshot 1

Start operation after the submenu of the display menu is displayed by clicking the [Display] button in the [Setup] tab. (page 15)

Step 1

Click "Monitor 1".



Screenshot 2

The "Monitor 1" menu will be displayed.

Step 2

Perform the display settings for monitor 1.

■ Time & Date Display

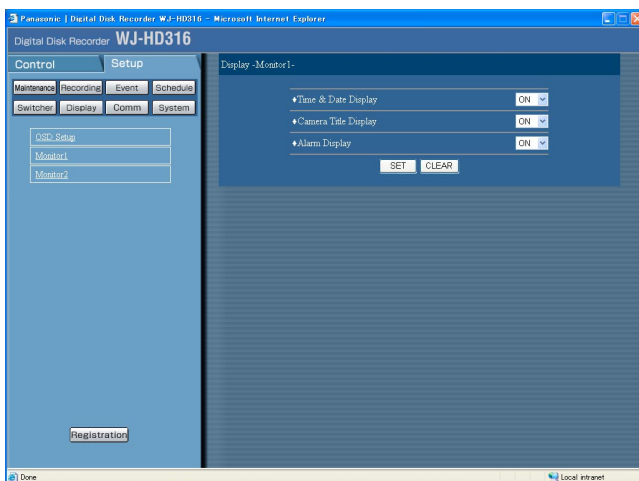
Select ON or OFF to determine whether to enable or disable the time display.

■ Camera Title Display

Select ON or OFF to determine whether or not to display the camera title.

■ Alarm Display

Select ON or OFF to determine whether to enable or disable the alarm display.



Step 3

Click the [SET] button after completing the settings.

Perform the display settings for monitor 2 display [Monitor 2]

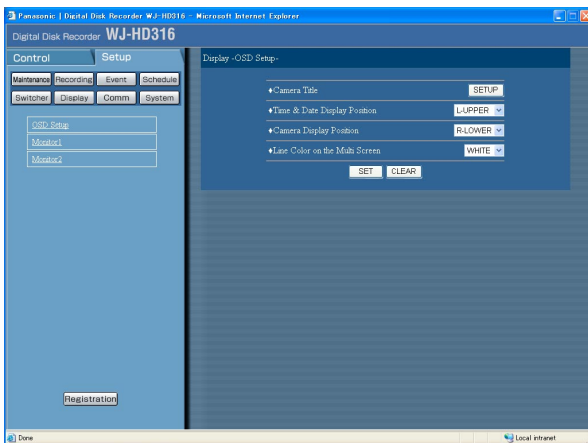
Perform the display settings for monitor 2 such as the task bar style, the time display position and the camera title display, etc.

Screenshot 1

Start operation after the submenu of the display menu is displayed by clicking the [Display] button in the [Setup] tab. (page 15)

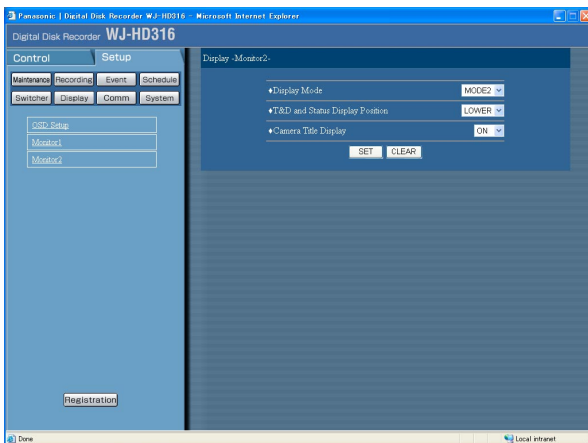
Step 1

Click "Monitor 2".



Screenshot 2

The "Monitor 2" menu will be displayed.



Step 2

Perform the display settings for the monitor 2.

■ Display Mode

Select a display mode (task bar style) from the following. Refer to the provided Operating Instructions for further information about the style of screen.

MODE1: Select [MODE1] for the display mode.

MODE2: Select [MODE2] for the display mode.

MODE3: Select [MODE3] for the display mode.

■ T & D and Status Display Position

Perform the settings for a display position of the time and status when [MODE1] is selected for the screen style.

UPPER: Displays them in the upper part of the screen.

LOWER: Displays them in the lower part of the screen.

■ Camera Title Display

Select ON or OFF to determine whether to enable or disable the camera title display.

Step 3

Click the [SET] button after completing the settings.

Settings for communication with other devices [Comm]

It is required to apply the same settings, for example, the communication speed, the communication protocol, etc. to the external devices such as a controller connected to the DATA port or the serial port (RS232C).

It is also required to perform the network settings such as the IP address, the gateway address, etc. when operating this unit using a PC via a network such as a LAN.

Perform the required settings for communicating with external devices.

Perform the communication settings for camera control [Camera Control]

Perform the communication settings for each camera channel to control cameras.

Screenshot 1

Start operation after the submenu of the communication menu is displayed by clicking the [Comm] button in the [Setup] tab. (page 15)

Step 1

Click "Camera Control".

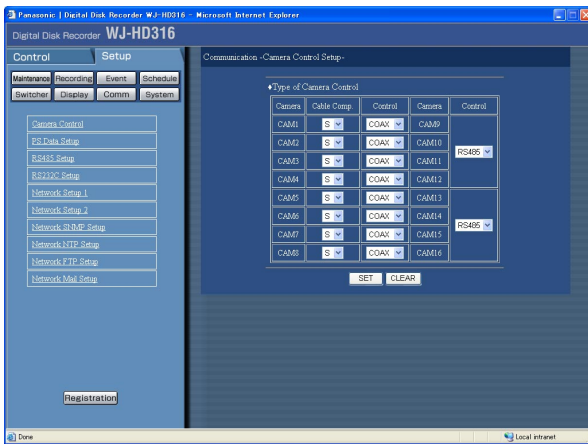


Notes:

- Perform the settings in accordance with cameras connected to this unit.
- Perform the settings for each of 4 cameras for CAM 9-16.
- To control cameras with the coaxial cable, connect cameras to the video input connectors 1-8 (compatible with coaxial cable communication). Use a Panasonic data multiplex unit to control cameras connected to other camera channels with coaxial cables. In this case, select "PSD" for the communication method of the camera to be controlled via the data multiplex unit.
- Set the unused camera channels to OFF.

Screenshot 2

The "Camera Control Setup" menu will be displayed.



Step 2

Click the [✓] button to select a communication method for each camera channel to control cameras from the following.

COAX: Controls cameras with coaxial communication.

(CAM 1 - 8 CH are available for the WJ-HD316,
CAM 1 - 6 CH are available for the WJ-HD309)

PSD: Controls cameras with PS-Data. (CAM 9 - 16 CH
are available for the WJ-HD316, CAM 7 - 9 CH are
available for the WJ-HD309)

RS485: Controls cameras with RS 485 communication.

(CAM 1 - 16 CH are available for the WJ-HD316,
CAM 1 - 9 CH are available for the WJ-HD309)

It is possible to compensate for the video signal transmission loss from the camera when using the VIDEO IN connector 1 - 8. (cable compensation)

Perform the settings for the cable compensation according to the length of cable used.

S: When the length of cable used is shorter than 500 m
M: When the length of cable used is longer than 500 m
and shorter than 900 m

L: When the length of cable used is longer than 900 m
and shorter than 1 200 m

Notes:

- Use 5C-2V cables for the cable compensation.
 - Perform the settings for the cable compensation properly according to the cable length. Otherwise camera pictures may not be displayed/recorded correctly.
-

Step 3

Click the [SET] button after completing the settings.

Settings for PS-Data [PS.Data Setup]

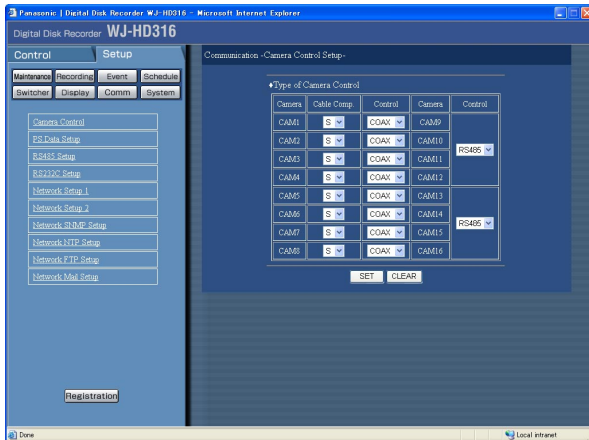
Perform the settings for PS-Data.

Screenshot 1

Start operation after the submenu of the communication menu is displayed by clicking the [Comm] button in the [Setup] tab. (page 15)

Step 1

Click "PS.Data Setup".



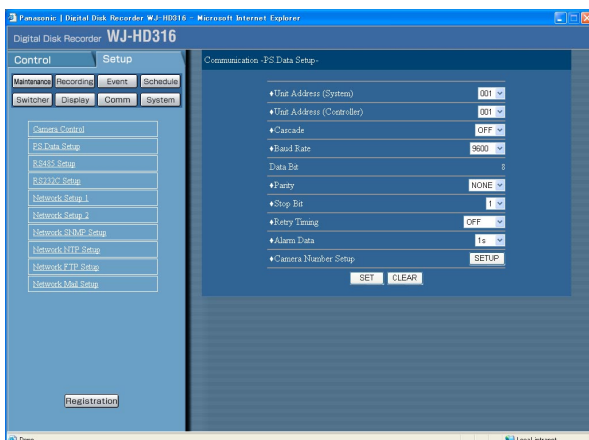
Screenshot 2

The "PS.Data Setup" menu will be displayed.

Step 2

Perform the settings for each item.

Refer to page 65 for further information about the settings for each item.



Step 3

Click the [SET] button after completing the settings.

Setup item

■ Unit Address (System)

A unit address is a unique number to be assigned to each PS·Data device. Each address of the system devices must be unique to identify them when connecting two or more PS·Data compatible devices. Numbers "001" - "099" can be assigned to unit addresses for system devices.

■ Unit Address (Controller)

The unit address (controller) is used to control a PS·Data device connected to this unit. Assign a number from "001" - "099" for a unit address.

■ Cascade

Select ON or OFF to determine whether or not to cascade the units. Set to ON when using two or more units for the cascade connection.

OFF: Do not cascade the units

ON: Cascade the units

■ Baud Rate

Select a communication speed for data transmission with a connected device from the following:

2 400/4 800/9 600/19 200/38 400 bps

■ Data Bit

Data length for communication. Changing the setting value is not possible.

8 bit

■ Parity

Select a method of error check for a transmission at communication from the following:

NONE: No parity check

EVEN: Even parity

ODD: Odd parity

■ Stop Bit

Select a stop bit from the following.

1/2 bit

■ Retry Timing

Select an interval for retrying when the data reception is not confirmed from the following:

OFF/100 ms/200 ms/ 400 ms/1000 ms

■ Alarm Data

Select a method to notify of an event occurrence to the connected controller from the following.

OFF: Do not notify the controller.

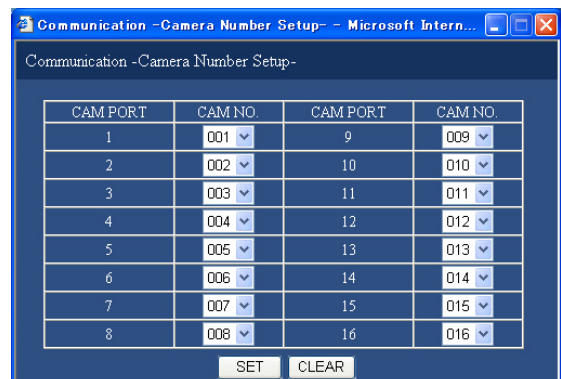
0s: Notify the controller every time an event is detected.

1s/5s: Notify the controller when a specified time has passed after detecting an event.

■ Camera Number Setup

Perform the settings for each camera channel to control cameras using the PS·Data compatible controller.

The following window will be displayed when the [SETUP] button is clicked.



Click the [✓] button to assign camera numbers (001 - 255) to each camera channel. Click the [SET] button after completing the settings, and close window by clicking the [×] button at the top right of the window.

Perform the settings for RS485 [RS485 Setup]

Perform the settings for RS485.

Screenshot 1

Start operation after the submenu of the communication menu is displayed by clicking the [Comm] button in the [Setup] tab. (page 15)

Step 1

Click "RS485 Setup".



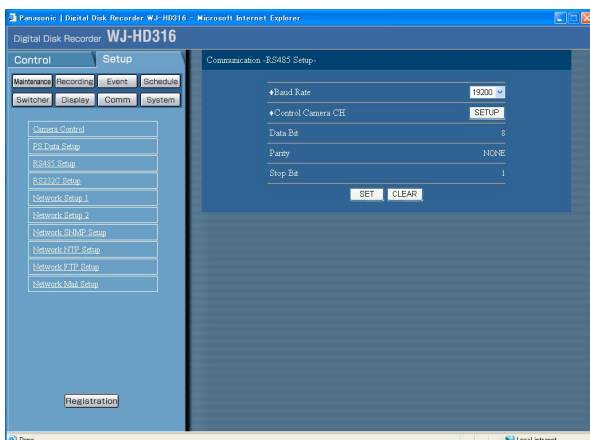
Screenshot 2

The "RS485 Setup" menu will be displayed.

Step 2

Perform the settings for each item.

Refer to page 67 for further information about the settings for each item.



Step 3

Click the [SET] button after completing the settings.

Setup item

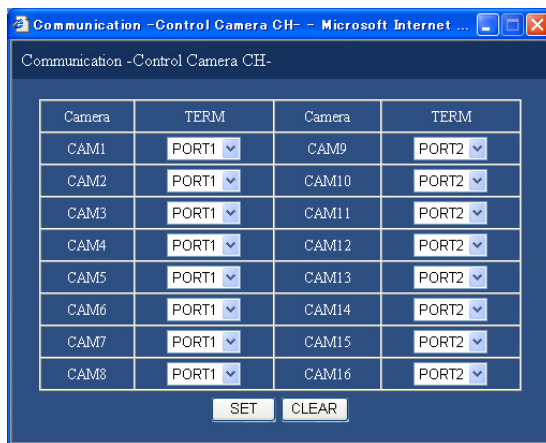
■ Baud Rate

Select a communication speed for data transmission with a connected device from the following.

4 800/9 600/19 200 bps

■ Control Camera CH

Assign camera channels to the RS485 port 1 and port 2. The following window will be displayed when the [SETUP] button is clicked.



Select a port to be controlled from the following for each camera channel. Click the [SET] button after completing the settings, and close window by clicking the [X] button at the top right of the window.

PORT1: Controls from the RS485 port 1.

PORT2: Controls from the RS485 port 2.

■ Data Bit

The data length for communication will be displayed. Changing the setting value is not possible.

■ Parity

Methods of error check for a transmission at communication will be displayed. Changing the setting value is not possible.

■ Stop Bit

Stop bit types will be displayed. Changing the setting value is not possible.

Perform the settings for SERIAL (RS232C) [RS232C Setup]

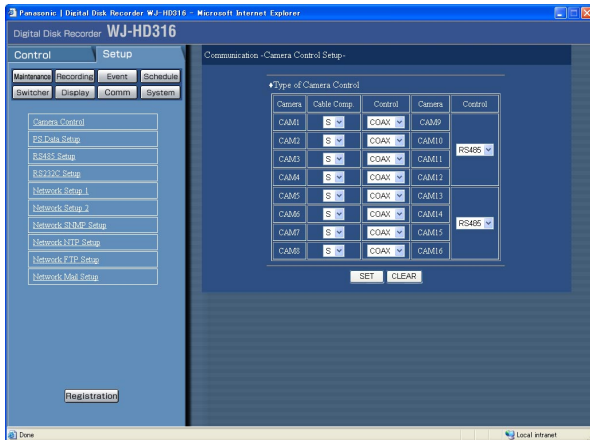
Perform the following settings for RS232C.

Screenshot 1

Start operation after the submenu of the communication menu is displayed by clicking the [Comm] button in the [Setup] tab. (page 15)

Step 1

Click "RS232C Setup".



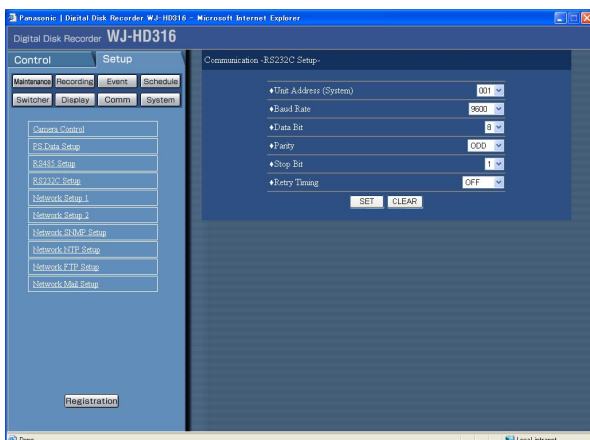
Screenshot 2

The "RS232C Setup" menu will be displayed.

Step 2

Perform the settings for each item.

Refer to page 69 for further information about the settings for each item.



Step 3

Click the [SET] button after completing the settings.

Setup item

■ Unit Address (System)

A unit address is a unique number to be assigned to each device. Each address of system devices must be unique to identify them when connecting two or more system devices. Numbers "001" - "099" are assigned to unit addresses for system devices for instance.

■ Baud Rate

Select a communication speed for data transmission with a connected device from the following.

9 600/19 200/38 400 bps

■ Data Bit

Select a data length for communication from the following.

7/8 bit

■ Parity

Select a method of error check for a transmission at communication from the following.

NONE: No parity check

EVEN: Even parity

ODD: Odd parity

■ Stop Bit

Select a stop bit from the following.

1/2 bit

■ Retry Timing

Select an interval for retrying when the data reception is not confirmed from the following.

OFF/100 ms/200 ms/400 ms/1 000 ms

Basic network settings [Network Setup 1]

Perform the required basic network settings to operate this unit using a PC via a network such as LAN.

Screenshot 1

Start operation after the submenu of the communication menu is displayed by clicking the [Comm] button in the [Setup] tab. (page 15)

Step 1

Click "Network Setup 1".

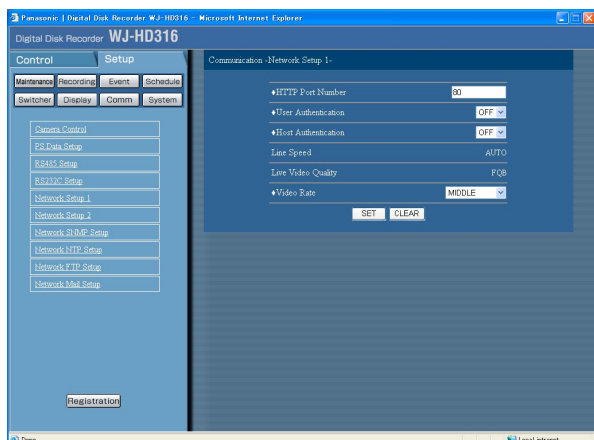


Screenshot 2

The "Network Setup 1" menu will be displayed.

Step 2

Perform the settings for each item. Refer to page 71 for further information about the settings for each item.



Step 3

Click the [SET] button after completing the settings.

Setup item

■ HTTP Port Number

Specify the HTTP port number to be used to send images from the unit. A number from 1 – 65535 is available. It is unnecessary to change it for normal use.

Note:

Depending on the network settings of LAN or Internet service provider, network communication may not be established if the http port number has been changed.

■ User Authentication

Select ON or OFF to determine whether to enable or disable the user authentication when the unit is accessed from a PC.

When "ON" is selected, the authentication window will be displayed when the unit is accessed from a PC. The top page will be displayed if the entered user name and password are registered and correct.

Important:

It is recommended to select ON for the user authentication for security.

■ Host Authentication

Select ON or OFF to determine whether to enable or disable the authentication by IP addresses when the unit is accessed from a PC.

When "ON" is selected, only the PC with the registered IP address can access the unit and control it via a network. It is possible to enhance the network security by setting and enabling both the host authentication and the user authentication.

Notes:

- User authentication will not be performed when accessing the unit using the registered host even though both the settings of "User Authentication" and "Host Authentication" are set to ON.
 - In case that ON is selected for both the user authentication and the host authentication, the user level setting for the accessing user will be applied for operable functions when the user access the unit with the registered host. It is impossible to operate the unit when accessing the unit using an unregistered host.
-

■ Line Speed

Transmission speed will be displayed. Changing the setting value is not possible.

■ Live Video Quality

Changing the setting value is not possible.

■ Video Rate

Select a refresh interval to be displayed in the browser window from the following.

FAST/MIDDLE/SLOW/VERY SLOW

Perform the settings for network connection [Network Setup 2]

Perform the required network settings to operate the unit using a PC via a network such as LAN.

Screenshot 1

Start operation after the submenu of the communication menu is displayed by clicking the [Comm] button in the [Setup] tab. (page 15)

Step 1

Click "Network Setup 2".

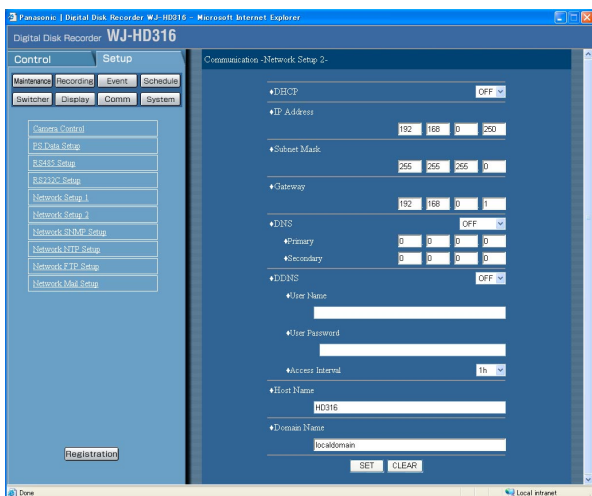


Screenshot 2

The "Network Setup 2" menu will be displayed.

Step 2

Perform the settings for each item. Refer to page 73 for further information about the settings for each item.



Step 3

Click the [SET] button after completing the settings.

Setup item

■ DHCP

Select ON or OFF to determine whether or not to use the DHCP server.

Select "ON" to obtain an IP address, a subnet mask and a gateway address from the DHCP server. Set to "OFF" when entering the addresses above manually.

■ IP Address

When "OFF" is selected for "DHCP", enter an IP address. Enter 4 decimal numbers (0-255) in order.

■ Subnet Mask

Enter a subnet mask according to the network environment when "OFF" is selected for "DHCP".

■ Gateway

Enter the IP address of the gateway according to the network environment when "OFF" is selected for "DHCP".

■ DNS

Select "MANUAL" or "AUTO" to enable IP address searching by the host name using the DNS.

Select "OFF" when not using the DNS.

Selecting "AUTO" is available only when "ON" is selected for "DHCP" (without using the DHCP server).

Selecting "MANUAL" is available regardless of the setting for "DHCP" (with or without using the DHCP server).

When "MANUAL" is selected for the DNS, enter the DNS server addresses in "Preliminary" and "Secondary".

For this unit, enter 4 units of the decimal number (0-255).

■ DDNS

Select ON or OFF to determine whether or not to use the DDNS (Dynamic Domain Name Server).

To select ON for the DDNS, it is required to select "MANUAL" or "AUTO" for "DNS".

When "ON" is selected, perform the following settings.

User Name: Enter a user name registration in the DDNS. Enter up to 32 alphanumeric characters listed below.

Password: Enter a password respective to the entered user name. Enter up to 32 alphanumeric characters listed below.

Access Interval: Select an interval to update the DNS from the following:
10 m/30 m/1 h/6 h/24 h

Note:

The following characters can be entered:

A B C D E F G H I J K L M N O P Q R S T U V W
X Y Z a b c d e f g h i j k l m n o p q r s t u v w x y z 0
1 2 3 4 5 6 7 8 9 ! # \$ % ' () * + , - . / : ; < = > ? @ [\] ^ _ { | } ~

■ Host Name

Enter a host address registered in the DDNS. Enter up to 255 alphanumeric characters. Hyphens (-) and periods (.) are also available for the host name.

■ Domain Name

Enter the domain name of this unit. Enter up to 255 alphanumeric characters. Hyphens (-) and periods (.) are also available for the domain name.

Perform the settings for SNMP network [Network SNMP Setup]

Perform the settings for the SNMP. Perform the settings for the status check of the unit, etc. by connecting the SNMP manager.

Screenshot 1

Start operation after the submenu of the communication menu is displayed by clicking the [Comm] button in the [Setup] tab. (page 15)

Step 1

Click "Network SNMP Setup".



Screenshot 2

The "Network SNMP Setup" menu will be displayed.

Step 2

Perform the settings for the following item.

■ COMMUNITY

Enter a name used for SNMP authentication in alphanumeric characters. Enter up to 32 alphanumeric characters.

■ CONTACT

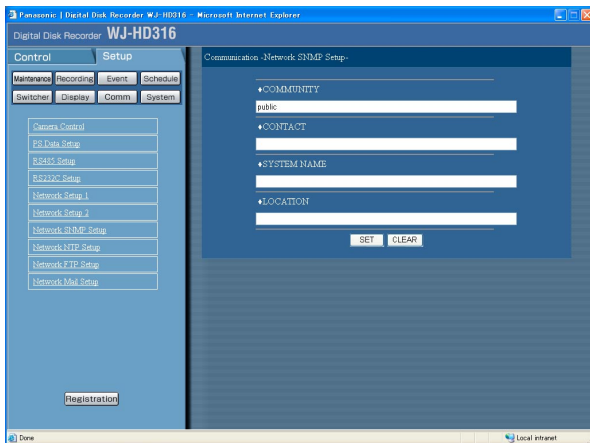
Enter the mail address of an administrator of this unit. Enter up to 255 alphanumeric characters.

■ SYSTEM NAME

Enter a system name in alphanumeric characters to manage this unit by the SNMP system, for example, No.1. Enter up to 255 alphanumeric characters.

■ LOCATION

Enter a location name (location where this unit is installed) in alphanumeric characters, for example, 2F. Enter up to 255 alphanumeric characters.



Note:

The following characters can be entered:
A B C D E F G H I J K L M N O P Q R S T U V W
X Y Z a b c d e f g h i j k l m n o p q r s t u v w x y z 0
1 2 3 4 5 6 7 8 9 ! # \$ % ' & () * + , - . / : ; < = > ? @ [¥] ^ _ ` { } ~

Step 3

Click the [SET] button after completing the settings.

Perform the settings for the time adjustment of a network [Network NTP Setup]

Perform the settings for the time and date.

Screenshot 1

Start operation after the submenu of the communication menu is displayed by clicking the [Comm] button in the [Setup] tab. (page 15)

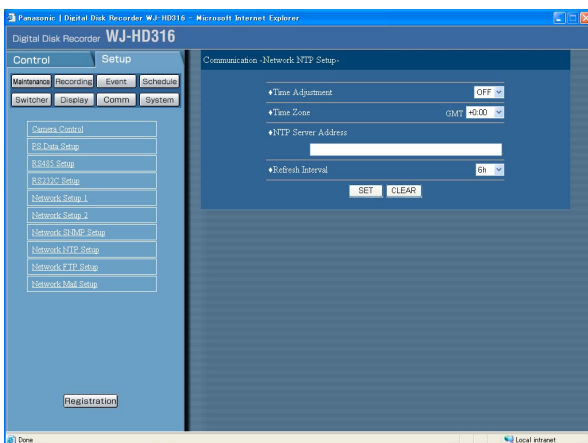
Step 1

Click "Network NTP Setup".



Screenshot 2

The "Network NTP Setup" menu will be displayed.



Important:

Recording will not be performed for around 4 seconds when changing the present time (accurate within ± 5 seconds) by setting the "Time Adjustment" to ON.

Step 2

Perform the settings for the following item.

■ Time Adjustment

Select ON or OFF to determine whether or not to adjust the time according to the NTP server.

■ Time Zone

Perform the settings for the time zone in accordance with the place of use when adjusting the time using the NTP server.

■ NTP Server Address

Enter the NTP server address when adjusting the time using the NTP server.

■ Refresh Interval

Select an interval of time inquiry to the NTP server from the following.

1 h/2 h/6 h/12 h/24 h

Step 3

Click the [SET] button after completing the settings.

Perform the settings for the FTP server. [Network FTP Setup]

Perform the settings for the FTP server.

Perform the required settings for [Network FTP Setup] to periodically send images from a camera connected to this unit to a designated FTP server.

Screenshot 1

Start operation after the submenu of the communication menu is displayed by clicking the [Comm] button in the [Setup] tab. (page 15)

Step 1

Click "Network FTP Setup".



Screenshot 2

The "Network FTP Setup" menu will be displayed.

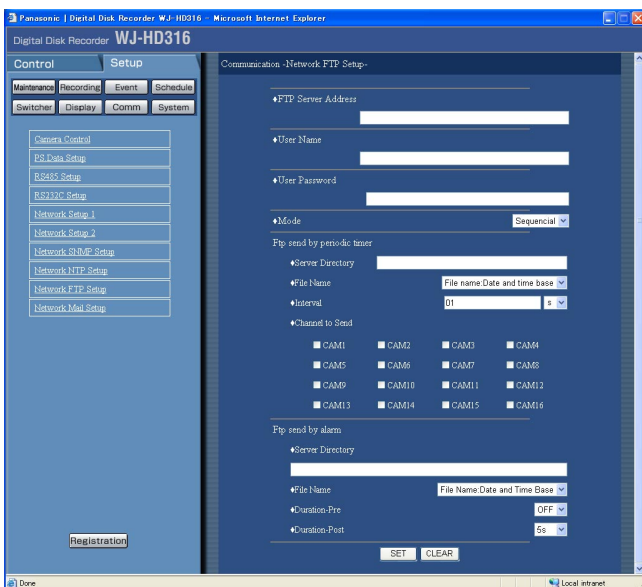
Step 2

Perform the settings for each item.

Refer to page 77 for further information about the settings for each item.

Step 3

Click the [SET] button after completing the settings.



Setup item

■ FTP Server Address

Enter an address or name (up to 255 characters) of the FTP server that receives images. To enter an FTP server name, it is necessary to select "MANUAL" or "AUTO" for "DNS".

■ User Name

Enter a user name (login name) to access the FTP server.

Enter up to 32 alphanumeric characters.

The available characters are the characters listed below.

■ User Password

It is necessary to register a password when sending images to the FTP server. Enter up to 32 alphanumeric characters.

The available characters are the characters listed below.

Entered character for the password will be displayed as "*" .

■ Mode

Select an action mode for sending images to the FTP server. Change to "Passive" when sending images is difficult with "Sequential".

Periodical transmission

Perform the following settings when periodically sending recorded images.

Ftp send by periodic timer

Perform the following settings to periodically send recorded images. Perform the setting to determine whether or not to send recorded images to the FTP server using the timetable (page 49).

■ Server Directory

Enter a directory of the server. Enter up to 32 alphanumeric characters.

The available characters are the characters listed below except (* : < > ? \ | ~).

■ File Name

Perform the settings for the rules about the file name to be sent.

Select whether to "Use the time and date as a file name" or "Use a number as a file name".

■ Interval

Enter a transmission interval. Select whether it will be "s" (seconds) or "m" (minutes) for the interval unit.

■ Channel to Send

CAM 1-16: Select a camera channel from which images will be sent periodically.

Images from the checked camera channel will be sent to the FTP server.

Ftp send by alarm

Perform the following settings to send images recorded in the location where an alarm occurred. Perform the setting to determine whether or not to send images recorded in the location where an alarm occurred to the FTP server using the timetable (page 49).

■ Server Directory

Enter a directory of the server. Enter a case-sensitive directory name. Enter up to 32 alphanumeric characters.

The available characters are the characters listed below except (* : < > ? \ | ~).

■ File Name

Perform the settings for the rules about the file name to be sent.

Select whether to "Use the time and date as a file name" or "Use a number as a file name".

■ Duration-Pre

Select the transmission duration for the pre-recorded images from the following.

OFF/1 s - 10 s (in 1 second intervals)

Important:

Pre-recorded images will not be transmitted when event pre-recording is not to be performed. Perform event pre-recording to transmit the pre-recorded images. Refer to page 44 for further information about the event pre-recording settings.

■ Duration-Post

Select the transmission duration for the post-recorded images from the following.

OFF/1 s - 10 s (in 1 second intervals)

Note:

The following characters can be entered:

A B C D E F G H I J K L M N O P Q R S T U V W

X Y Z a b c d e f g h i j k l m n o p q r s t u v w x y z 0

1 2 3 4 5 6 7 8 9 ! # \$ % ' () * + , - . / : ; < = > ? @ [\] ^ _ ` { } ~

Perform the settings for mail notification. [Network Mail Setup]

Perform the settings to use the mail functions (Alarm mail notice (page 48), Error report mail (page 50), Warning report mail (page 50)).

Screenshot 1

Start operation after the submenu of the communication menu is displayed by clicking the [Comm] button in the [Setup] tab. (page 15)

Step 1

Click "Network Mail Setup".



Screenshot 2

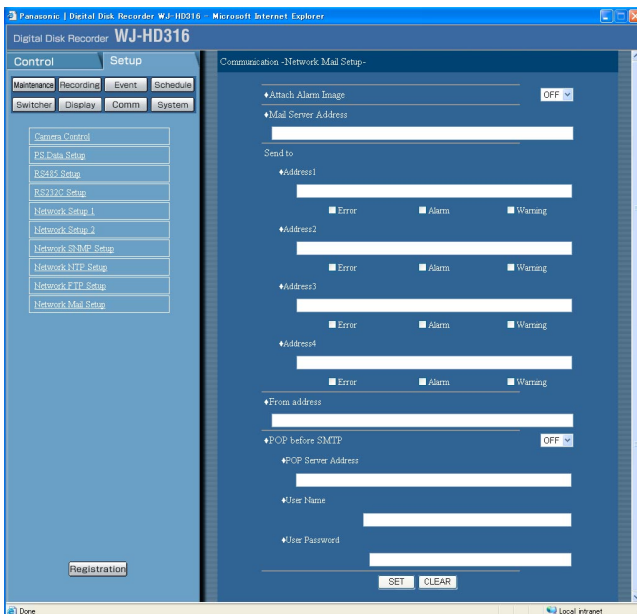
The "Network Mail Setup" menu will be displayed.

Step 2

Perform the settings for each item. Refer to page 80 for further information about the settings for each item.

Step 3

Click the [SET] button after completing the settings.



Setup item

■ Attach Alarm Image

Select ON or OFF to determine whether or not to attach an image to an e-mail to be sent at an event occurrence.

■ Mail Server Address

Enter an IP address or a name of the SMTP server to send e-mails to. To enter an SMTP server name, it is necessary to select "MANUAL" or "AUTO" for "DNS". Enter up to 255 alphanumeric characters (including hyphens (-) and periods (.))

Send to

Perform the settings for a destination of any alarm mails (refer to the network operation instructions), problem mails (page 97) and error mails (page 98). Enter mail addresses after checking "Destination 1 - 4".

Up to 4 destination can be registered.

Check the desired mail type (problem/alarm/error) to be sent.

■ From address

Enter the mail address of a sender. Entered mail addresses will be displayed in the "From" (sender) line.

Enter up to 255 alphanumeric characters.

Entering hyphens (-) and periods (.) is possible.

■ POP Server address

Select ON or OFF to determine whether to enable or disable the POP server authentication before sending e-mails using the SMTP server.

When "ON" is selected, perform the following settings.

■ User Password

Enter a password to access the POP server.

Enter up to 32 alphanumeric characters including hyphens (-) and periods (.).

The available characters are the characters listed below.

■ User Name

Enter a user name (login name) to access the POP server.

Enter up to 32 alphanumeric characters.

The available characters are the characters listed below.

■ Password

Register a password to access the POP server. Enter up to 32 alphanumeric characters. An entered character for the password will be displayed as "***".

Note:

The following characters can be entered:

A B C D E F G H I J K L M N O P Q R S T U V W
X Y Z a b c d e f g h i j k l m n o p q r s t u v w x y z 0
1 2 3 4 5 6 7 8 9 ! # \$ % ' () * + , - . / : ; < = > ? @ [\] ^ _ { | } ~

Perform the settings for the system [System]

Perform the settings for the system of this unit.

Perform the basic settings for the system [Basic Setup]

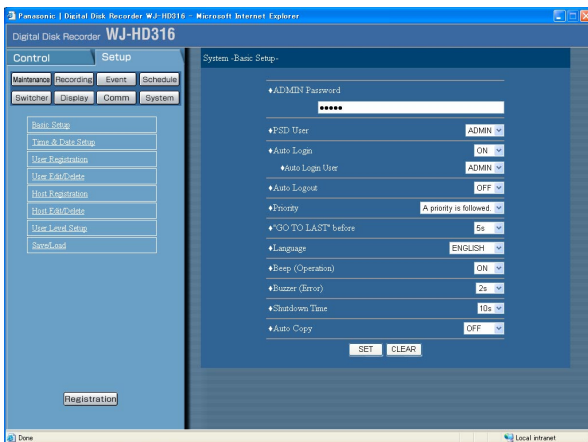
Perform the settings for the basic operations of this unit.

Screenshot 1

Start operation after the submenu of the communication menu is displayed by clicking the [System] button in the [Setup] tab. (page 15)

Step 1

Click "Basic Setup".

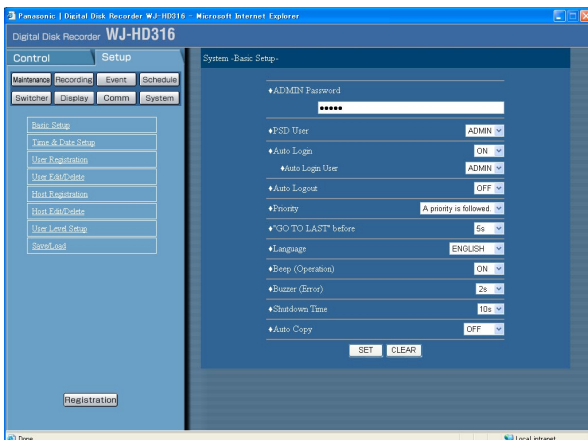


Screenshot 2

The "Basic Setup" menu will be displayed.

Step 2

Perform the settings for each item. Refer to page 82 for further information about the settings for each item.



Step 3

Click the [SET] button after completing the settings.

Setup item

■ ADMIN Password

Set a password for an administrator.
Enter 4 to 8 alphanumeric characters.

Important:

To enhance the security, change the password for an administrator periodically.

■ PSD User

Perform the settings for a user when using a PS-Data compatible controller. A PSD user should be one of the registered users for this unit.

■ Auto Login

Select ON or OFF to determine whether to activate or deactivate the auto login function.

OFF: Deactivate the auto login function. Authentication will be required each time this unit starts up.

ON: Activates the auto login function.

■ Auto Login User

When ON is selected for "Auto Login", the user registered as auto login user in this setting can log in the unit automatically.

An auto login user should be one of the users registered in this unit.

■ Auto Logout

Perform the settings to log out a user automatically when the set time has passed from the time a user logged in.

OFF: Deactivate the auto logout function.

1/2/3/4/5/30 m: Activates the auto logout function after the selected time has passed from the time a user logged in.

Important:

When ON is selected for the auto login function, the auto logout function will not work.

■ Priority

Perform the settings to assign priorities to operate this unit in case two or more users access this unit simultaneously.

A priority is followed.: Users with higher priority can operate this unit.

Pre-priority: A user who accessed the unit first can operate it regardless of the priorities.

Post-priority: A user who accessed the unit last can operate it regardless of the priorities.

■ "GO TO LAST" before

Select a time to be skipped to when the [Go To LAST] button is pressed during playback from the following.

5 s/10 s/30 s/1 m/5 m

■ Language

Select a language for the SETUP MENU from the following.

JAPANESE/ENGLISH/FRENCH/SPANISH/GERMAN/ITALIAN

Important:

Displaying language of the browser used to access the unit from a PC will not be changed even though this setting is changed.

■ Beep (Operation)

Select ON or OFF to determine whether or not to sound the buzzer when the button is pressed.

■ Buzzer (Error)

Perform the settings for sounding a buzzer at an error occurrence.

OFF: A buzzer will not sound at an error occurrence.

1 s - 30 s (in 1 second intervals)/40 s/50 s/1 m/3 m/4 m/5 m (in 1 minute intervals):

The buzzer that started sounding at an error occurrence will sound for the selected period.

EXT: The buzzer that started sounding at an error occurrence will keep on sounding until the [ALARM RESET] button on the front panel of the unit is pressed or the [ALARM RESET] button in the status display area is clicked.

■ Shutdown Time

Determine when the safe shutdown starts after a power outage alert signal is supplied to this unit.

10 s/20 s/30 s/1 m/2 m/3 m/4 m/5 m

■ Auto Copy

Perform the settings to copy recorded images automatically to the copy area of the hard disk or the DVD-RAM disk.

OFF: Images will not be copied.

COPY 1: Images will be copied to the DVD-RAM disk connected to the copy 1 port.

COPY 2: Images will be copied to the DVD-RAM disk connected to the copy 2 port. **HDD:** Images will be copied to the copy area of the hard disk of this unit.

Important:

- When "OFF" is selected, the auto copy function will be disabled even for an emergency recording and auto copy at an event occurrence.
 - Auto copy will not function without connecting to a DVD-RAM disk even if "COPY 1" or "COPY 2" is selected.
 - Images recorded (by event pre-recording) in the pre-recording area on the hard disk will not be copied automatically.
-

Perform the settings for the time and date [Time & Date Setup]

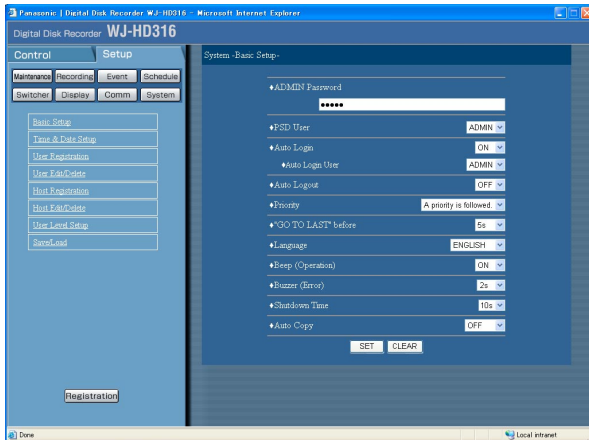
Perform the settings for the time and date.

Screenshot 1

Start operation after the submenu of the communication menu is displayed by clicking the [System] button in the [Setup] tab. (page 15)

Step 1

Click "Time & Date Setup".



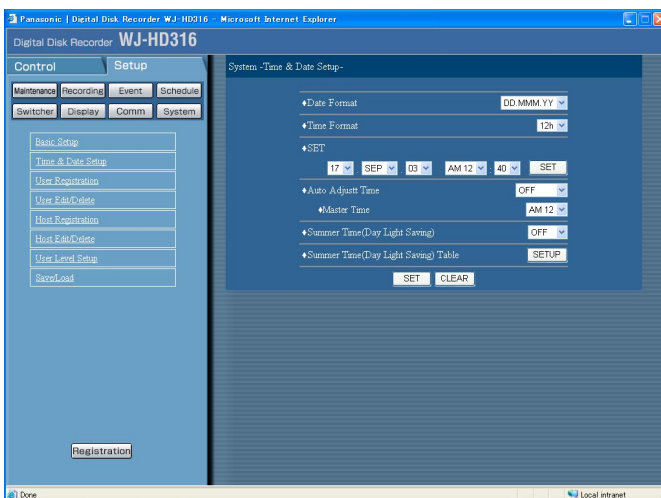
Screenshot 2

The "Time & Date Setup" menu will be displayed.

Step 2

Perform the settings for each item.

Refer to page 85 for further information about the settings for each item.



Step 3

Click the [SET] button after completing the settings.

Setup item

■ Date Format

Select a date format to be displayed from the following.

(Example for April 1, 2003)

YY.MM.DD: 03.4.1

MMM.DD.YY: APR.1.03

DD.MMM.YY: 1.APR.03

■ Time Format

Select a time format to be displayed from the following.

(Example for 3 o'clock in the afternoon)

24 h: 15:00:00

12 h: 3:00:00 PM

■ SET (Clock settings)

Adjust the current time and date.

Enter numbers in order for year, month, day, hour and minute, and then click the [SET] button.

Important:

Recording will stop for around 4 seconds just after setting the clock.

■ Auto Adjust Time

Select a method of auto clock adjustment from the following.

When "MASTER" is selected, signals will be supplied from the ALARM/CONTROL connector to inform the clock of the MASTER unit (see below) at a set time.

OFF: Does not adjust time automatically.

SLAVE: Receives a signal from the MASTER unit and adjusts the clock.

MASTER: A signal will be supplied from the ALARM/CONTROL connector on the rear panel of the MASTER unit to the other connected devices and the other devices will adjust their clocks with reference to the clock of this unit.

■ Master Time

Set the clock for a signal to be supplied from the ALARM/CONTROL connector (time adjustment I/O, pin. no. 20) of the ALARM/CONTROL connector on the rear pane of the unit.

■ Summer Time (Day Light Saving)

Perform the settings for summer time from the following.

OFF: Does not apply summer time.

ON: Applies summer time.

AUTO: Applies summer time automatically in accordance with the settings for switching to summer time (Refer to the following).

■ Summer Time (Day Light Saving) Table

Set the start (ON)/end (OFF) date and time for summer time.

The following window will be displayed when the [SETUP] button is clicked. Click the [SET] button after completing the settings, and close window by clicking the [X] button at the top right of the window.

Enter the last 2 digits for the year.

Up to 10 times and dates for switching to summer time can be set.

Row	Mode	Day	Month	Year	Hour	Minute
1	ON	--	--	--	--	--
	OFF	--	--	--	--	--
2	ON	--	--	--	--	--
	OFF	--	--	--	--	--
3	ON	--	--	--	--	--
	OFF	--	--	--	--	--
4	ON	--	--	--	--	--
	OFF	--	--	--	--	--
5	ON	--	--	--	--	--
	OFF	--	--	--	--	--
6	ON	--	--	--	--	--
	OFF	--	--	--	--	--
7	ON	--	--	--	--	--
	OFF	--	--	--	--	--
8	ON	--	--	--	--	--
	OFF	--	--	--	--	--
9	ON	--	--	--	--	--
	OFF	--	--	--	--	--
10	ON	--	--	--	--	--
	OFF	--	--	--	--	--

Registration of a user who operates this unit [User Registration]

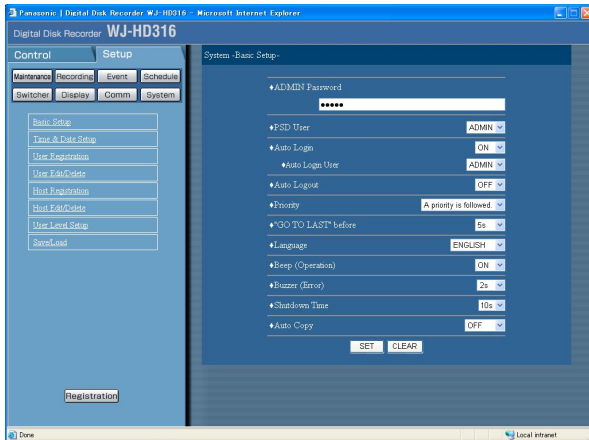
Register user information such as a user name and password.

Screenshot 1

Start operation after the submenu of the communication menu is displayed by clicking the [System] button in the [Setup] tab. (page 15)

Step 1

Click "User Registration".



Screenshot 2

The "User Registration" menu will be displayed.

Step 2

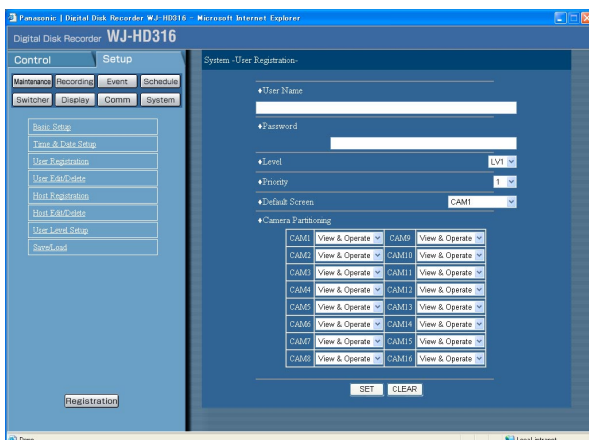
Perform the settings for each item. Refer to page 87 for further information about the settings for each item.

Step 3

Click the [SET] button after completing the settings.

Note:

Repeat steps 2 and 3 to register two or more users.



Setup item

■ User Name

Enter a user name. Enter 4 to 14 alphanumeric characters for a user name.

■ Password

Enter a password. Enter 4 to 8 alphanumeric characters for a password.

Important:

Set unique password, not something that would be easily guessed by a third person. Password also should be memorable.

■ Level

Select a user level from the following. Operable functions for each level can be set in "User Level Setup" menu (page 92).

LV1/LV2/LV3

■ Priority

Assign a priority from 1 (lowest priority) to 16 (highest priority) to every user.

■ Default Screen

Select a startup display to be displayed after login from the following.

CAM1-16 (for the WJ-HD316)/**CAM1-9** (for the WJ-HD309): Displays live images from the selected camera channel on a single screen.

QUAD1-4: Displays live images from the camera channels 1 - 4 on a 4-split screen.

QUAD5-8: Displays live images from the camera channels 5 - 8 on a 4-split screen.

QUAD9-12 (for the WJ-HD316)/**CAM9** (for the WJ-HD309): Displays live images from the camera channels 9 - 12 on a 4-split screen. (When WJ-HD309 is used, live images from only camera channel 9 will be displayed on the upper left screen of a 4-split screen.)

QUAD13-16 (only for the WJ-HD316): Displays live images from the camera channels 13 - 16 on a 4-split screen.

7SCREEN: Displays images on a 7-split screen.

9SCREEN1-9: Displays images from the camera channels 1 - 9 on a 9-split screen.

9SCREEN10-16 (only for the WJ-HD316): Displays images from the camera channels 10 - 16 on a 9-split screen.

10SCREEN (only for the WJ-HD316): Displays images on a 10-split screen.

13SCREEN (only for the WJ-HD316): Displays images on a 13-split screen.

16SCREEN (only for the WJ-HD316): Displays images on a 16-split screen.

SEQ: Images will be displayed in the sequential display.

■ Camera Partitioning

Select a controllable range for each camera channel from the following.

View & Operate: Both displaying live images and controlling cameras are available.

View: Only displaying live images is possible. Controlling cameras is not possible.

--: Neither displaying live images nor controlling cameras are possible.

Edit/delete registered user information [User Edit/Delete]

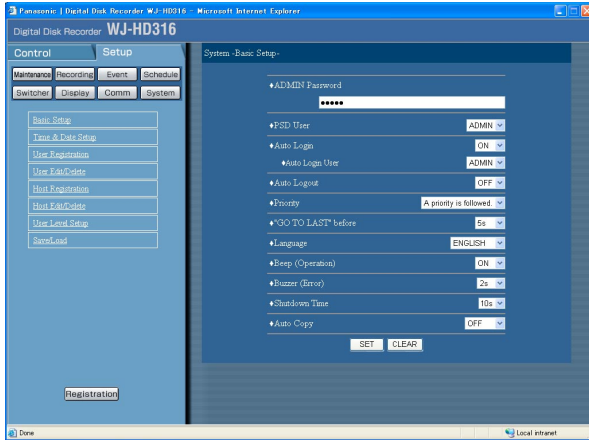
Edit or delete a registered user information.

Screenshot 1

Start operation after the submenu of the communication menu is displayed by clicking the [System] button in the [Setup] tab. (page 15)

Step 1

Click "User Edit/Delete".

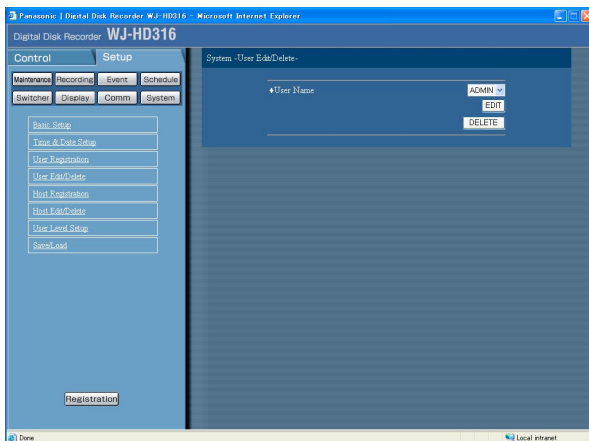


Screenshot 2

The "User Edit/Delete" menu will be displayed.

Step 2

Click the [✓] button to select a desired user information to be edited or deleted.



Step 3

- Click the [EDIT] button to edit the selected user information.
The "Edit user information" window will be displayed with information of the registered user. Edit user information in the same way as the user registration. (page 86)
- Click the [DELETE] button to delete the selected user.

Registration of a PC (host) accessible to this unit [Host Registration]

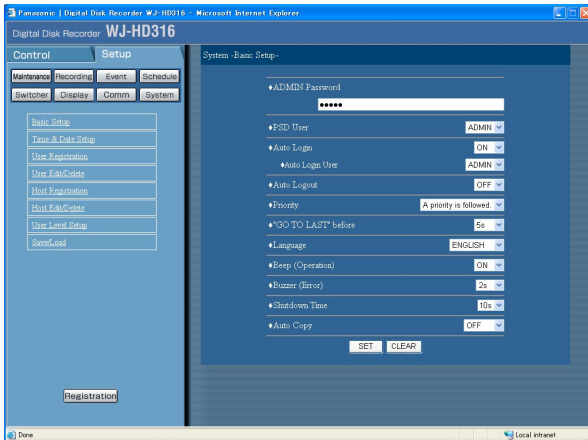
Register information of a PC (host) that accesses this unit via a network such as a LAN.

Screenshot 1

Start operation after the submenu of the communication menu is displayed by clicking the [System] button in the [Setup] tab. (page 15)

Step 1

Click "Host Registration".



Screenshot 2

The "Host Registration" menu will be displayed.

Step 2

Perform the settings for each item.

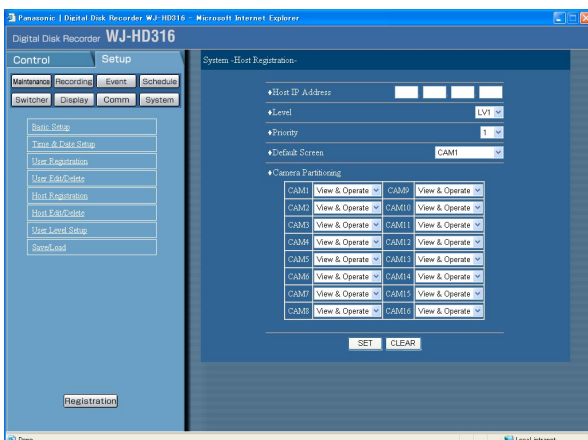
Refer to page 90 for further information about the settings for each item.

Step 3

Click the [SET] button after completing the settings.

Note:

Repeat steps 2 and 3 to register two or more users.



Setup item

■ Host IP Address

Enter an IP address. Enter 4 units from the decimal numbers (0-254).

Notes:

- Entering "*" validates all numbers.
 - It is impossible to register "0.0.0.0" or "*. *. *. *".
-

■ Level

Select a level from the following. Operable functions for each level can be set in "User Level Setup" menu (page 92).

LV1/LV2/LV3

■ Priority

Assign a priority from 1 (lowest priority) to 16 (highest priority) to every host.

■ Default Screen

Select a startup display to be displayed after login from the following.

CAM1-16 (for the WJ-HD316)/**CAM1-9** (for the WJ-HD309): Displays live images from the selected camera channel on a single screen.

QUAD1-4: Displays live images from the camera channels 1 - 4 on 4-split screen.

QUAD5-8: Displays live images from the camera channels 5 - 8 on 4-split screen.

QUAD9-12 (for the WJ-HD316)/**CAM9** (for the WJ-HD309): Displays live images from the camera channels 9 - 12 on a 4-split screen. (When WJ-HD309 is used, live image from only the camera channel 9 will be displayed on the upper left screen of a 4-split screen.)

QUAD13-16 (only for the WJ-HD316): Displays live images from the camera channels 13 - 16 on a 4-split screen.

7SCREEN: Displays images on a 7-split screen.

9SCREEN1-9: Displays images from the camera channels 1 - 9 on a 9-split screen.

9SCREEN10-16 (only for the WJ-HD316): Displays images from the camera channels 10 - 16 on a 9-split screen.

10SCREEN (only for the WJ-HD316): Displays images on a 10-split screen.

13SCREEN (only for the WJ-HD316): Displays images on a 13-split screen.

16SCREEN (only for the WJ-HD316): Displays images on a 16-split screen.

SEQ: Images will be displayed in the sequential display.

■ Camera Partitioning

Select a controllable range for each camera channel from the following.

View & Operate: Both displaying live images and controlling cameras are possible.

View: Only displaying live images is possible. Controlling cameras is not possible.

--: Neither displaying live images nor controlling cameras are possible.

Edit/delete a registered host information [Host Edit/Delete]

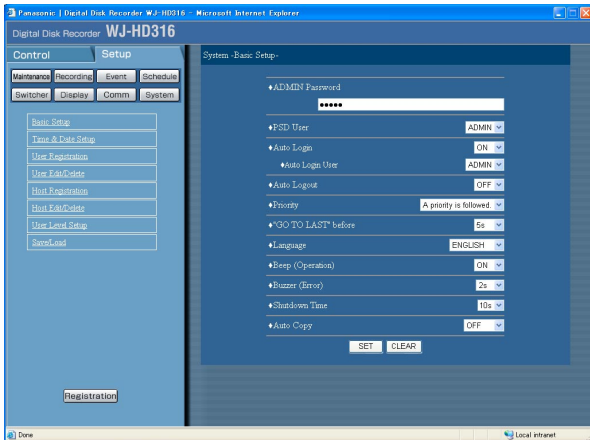
Edit or delete a registered host information.

Screenshot 1

Start operation after the submenu of the communication menu is displayed by clicking the [System] button in the [Setup] tab. (page 15)

Step 1

Click "Host Edit/Delete".

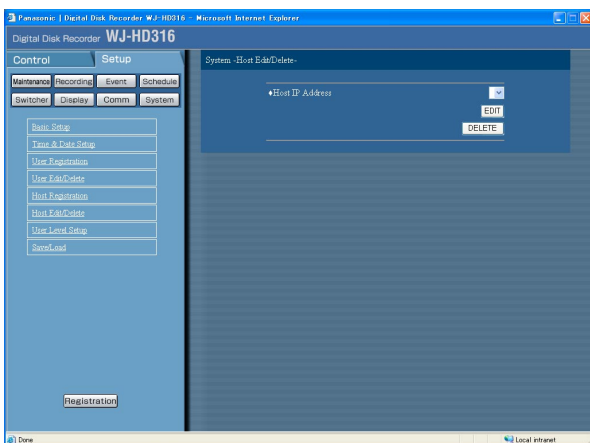


Screenshot 2

The "Host Edit/Delete" menu will be displayed.

Step 2

Click the [✓] button to select the desired host information to be edited or deleted.



Step 3

- Click the [EDIT] button to edit the selected host information.
The "Edit host information" window will be displayed with information of the registered host. Corrections can be performed in the same way as registration. (page 89)
- Click the [DELETE] button to delete the selected host IP address.

Setting of operation level [User Level Setup]

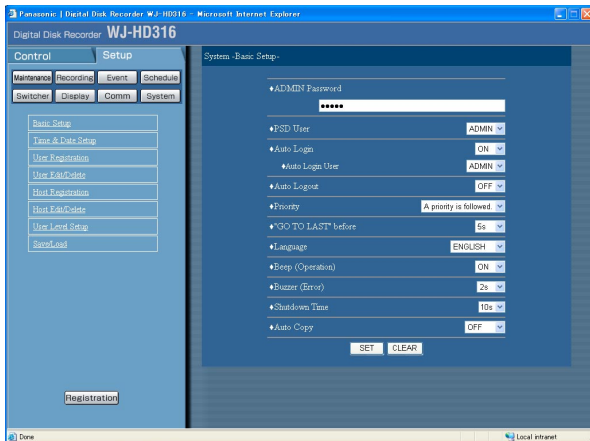
Assign a level (LV 1/LV 2/LV 3) to every user to restrict operable functions.

Screenshot 1

Start operation after the submenu of the communication menu is displayed by clicking the [System] button in the [Setup] tab. (page 15)

Step 1

Click "User Level Setup".



Screenshot 2

The "User Level Setup" menu will be displayed.

Step 2

Check the desired functions to allow to operate. To not allow a user to operate certain functions, do not check the respective function.

Refer to the next page for further information about each function.

Step 3

Click the [SET] button after completing the settings.



Notes:

- Each parameter of user level is as follows:
 - LV1:** Possible to perform all the operations (Administrators)
 - LV2:** Possible to refer the settings of the unit and the access log, and to perform the alarm reset (Head of operators)
 - LV3:** Possible to monitor or play the images (Operators)
- The default settings are shown as in the magnified picture above.

About functions that can be restricted

The following functions can be made restricted according to the levels.

Function	Description
WJ-HD300 Setup	The SETUP MENU is displayed and the settings can be performed.
WJ-HD300 Setup Status	Only the SETUP MENU can be displayed. The settings cannot be performed.
Camera Setup	The setting menu of the camera is displayed and the settings can be performed.
Event Log Status	The SETUP MENU is displayed and you can refer to the event log. (Refer to page 14.) You also can refer to the network log. Refer to the Network Operating Instructions (PDF) for further information.
Access Log Status	The SETUP MENU is displayed and you can refer to the access log. (Refer to page 14.)
Trouble Log Status	The SETUP MENU is displayed and you can refer to the trouble log. (Refer to page 14.)
Alarm Reset	An event action can be canceled. (Refer to the Network Operating Instructions (PDF).)
Alarm Disarm Time	An event action can be suspended. (Refer to the Operating Instructions (book).)
Copy	A recorded image can be manually copied. (Refer to the Network Operating Instructions (PDF).)
Normal Recording Erase	Image data in the normal recording area of the hard disk can be manually deleted.
Event Recording Operation	Image data in the event recording area of the hard disk can be manually deleted.
Manual Recording Operation	Manual recording can be started and stopped.
Playback Operation	A recorded image can be played.
Network Access	This unit can be logged into from a PC via a network.

Saving and loading of settings of SETUP MENU [Save/Load]

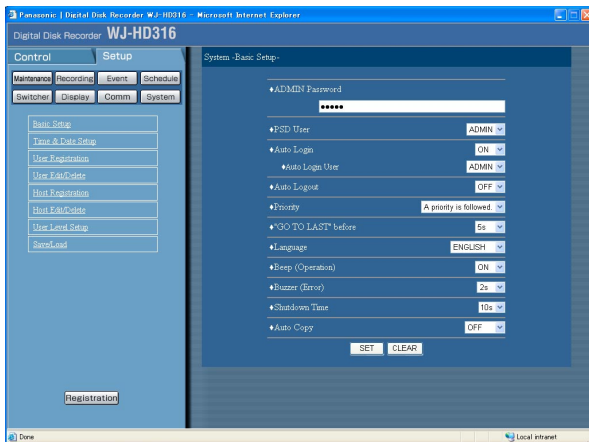
Save the settings of the SETUP MENU in this unit.
Call up saved settings. (Load)

Screenshot 1

Start operation after the submenu of the communication menu is displayed by clicking the [System] button in the [Setup] tab. (page 15)

Step 1

Click "Save/Load".

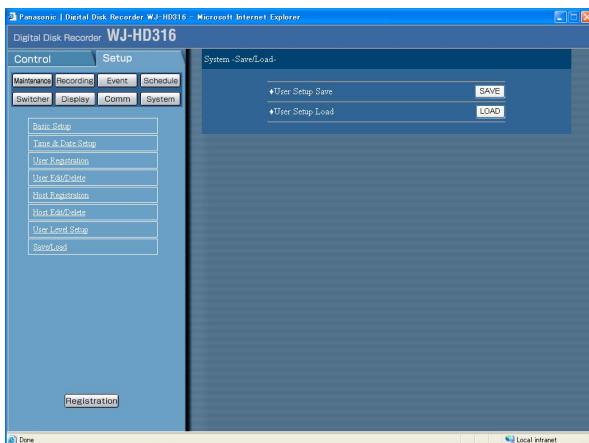


Screenshot 2

The "Save/Load" menu will be displayed.

Step 2

- Save the settings of the SETUP MENU in this unit.
- Click the [LOAD] button to call up the saved settings.



Notification by e-mail

Alarm mail notification

The following mail will be sent to notify of an alarm occurrence to a registered address when an alarm occurs.

```
HD316 (192.168.0.250), alarm was occurred.  
Alarm date:    xx-xxx-xxxx xx:xx:xx (Example: 1-JAN-2004 12:00:00)  
Cause of alarm:    Displays an event type and a camera channel or an alarm number (Example: VMD5CH)  
File name of alarm image:    The file name of the image attached to an e-mail.
```

It is possible to edit the contents of the alarm mail that notifies of the event occurrence with the time and date of the event occurrence.

To edit the alarm mail, perform the following.

Step 1

Edit the contents using text editing software and save in the text format.

Depending on the item (time and date at an event occurrence, cause of alarm, host address, etc.) to be displayed, characters to be entered will be different. Refer to the following list of characters to be replaced when editing the contents of the mail. Save the edited mail contents as the file name of "almmail.tmpl".

Step 2

Start up the FTP software and enter the IP address of the unit to connect to the unit.

Enter the user name and password as follows.

User Name: ADMIN

Password: Password entered for ADMIN on the SETUP MENU. (The default password is 12345.)

Refer to a system administrator for further information about the settings of user name and password.

Step 3

Transfer the edited file (almmail.tmpl) in the text format.

The directory to be sent is as follows.

/user/HD300/HTML_FILES

ist of characters to be replaced

Item to be displayed	Display style of entered characters	Example
Time and date when the alarm occurred	%#05100000	Day, month, year (4-digit), hour, minute, second (1 - JAN - 2004 12:00:00)
Year when the alarm occurred (4-digit)	%#05000000	4-digit display (2002 - 2099)
Month when the alarm occurred (number)	%#05000100	1 or 2-digit display (1 - 12)
Month when the alarm occurred (3 letters)	%#05000200	Displays first 3 letters (Jan, Feb ... Dec)
Day when the alarm occurred	%#05000300	1 or 2-digit display (1 - 31)
Time when the alarm occurred	%#05000400	24-hour display (15:00:00)
Mail address of the sender	%#05000500	
Host name of HD316	%#05000600	HD316
IP Address of HD316	%#05000700	192.168.0.250
Cause of the alarm	%#05000800	Terminal: Terminal, VMD: VMD, Command: Command, Video loss: VideoLoss, Emergency recording: Emergency
Alarm number	%#05000900	1 or 2-digit (1 - 32) + CH
File name of the alarm image	%#05001000	xx_ALMyymmddhhmmss.GO4 Remains blank when no alarm image exists. xx: Camera channel number yymmdd: Time and date when the alarm occurred hhmmss: Time (hour, minute, second) when the alarm occurred

Problem mail notification

The following mail will be sent to notify of a trouble occurrence to a registered address when a trouble occurs.

WJ-HD316 (192.168.0.250) STATUS REPORT.
 DATE: xx-xxx-xxxx xx:xx:xx 1-JAN-2004 12:00:00 AM
 STATUS: THERMAL ERROR

Display	Description
DATE	Time and date when the trouble occurred will be displayed.
STATUS	<p>The description of a trouble will be displayed.</p> <p>Thermal trouble: THERMAL ERROR</p> <p>Alteration detection: ALTERED</p> <p>HDD read/write error detection: DISK ERROR XX XX indicates disk number (sequential serial number) 1: Disk no.1 of the unit 2: Disk no.2 of the unit 3: Disk no.1 of the connected extension unit (Continues if more disks are connected/installed)</p> <p>HDD smart warning: DISK WARNING XX XX indicates disk number (sequential serial number) 1: Disk no.1 of the unit 2: Disk no.2 of the unit 3: Disk no.1 of the connected extension unit (Continues if more disks are connected/installed)</p> <p>HDD Capacity warning*¹: <except FULL> HDD-NORMAL CAPACITY REMAINS ** % HDD-EVENT CAPACITY REMAINS ** % ** indicates set value (%) - 0 <FULL> HDD-NORMAL IS FULL HDD-EVENT IS FULL</p> <p>HDD hour meter warning: HDD HOUR METER WARNING</p> <p>Power outage detection: POWER LOSS</p> <p>Remove auto links: LOGICALLY REMOVED HDD XX XX indicates disk number (sequential serial number) 1: Disk no.1 of the unit 2: Disk no.2 of the unit 3: Disk no.1 of the connected extension unit (Continues if more disks are connected/installed)</p> <p>Fan trouble: FAN ERROR</p> <p>Copy media trouble: MEDIUM ERROR</p> <p>Other troubles: UNDEFINED ERROR</p>

* 1: HDD capacity warning

A problem mail with the contents of <except FULL> will be sent when the available disk space becomes less than the set value for "Capacity warning" in the "Maintenance" menu. After a problem mail is sent, a problem mail with the <except FULL> content will be sent each time 1% of the available disk space is reduced, and a problem mail with the <FULL> content will be sent when there is no available disk space.

Note:

It is impossible to edit a problem mail.

About error mail

An error mail with the following contents will be sent to a registered address when the available hard disk space of the copy area or an external recording disk (DVD-RAM disk, DVD-R disk, CD-R disk) is less than the set level, or when the disk has no available disk space.

WJ-HD316 (192.168.0.250) STATUS REPORT.

DATE: xx-xxx-xxxx xx:xx:xx 1-JAN-2004 12:00:00 AM
STATUS: THERMAL ERROR

Display	Description
DATE	Time and date when an error occurred will be displayed.
STATUS	The description of the capacity warning will be displayed. <except FULL> HDD-COPY CAPACITY REMAINS ** % COPY1 CAPACITY REMAINS **% COPY2 CAPACITY REMAINS **% ** indicates set value (%) - 0 <FULL> HDD-COPY IS FULL COPY1 IS FULL COPY2 IS FULL

HDD capacity warning

A problem mail with the <except FULL> content will be sent when the available disk space becomes less than the set value for "Capacity warning" in the "Maintenance" menu. After a problem mail is sent, a problem mail with the <except FULL> content will be sent each time 1% of the available disk space is reduced, and a problem mail with the <FULL> content will be sent when there is no available disk space.

Note:

It is impossible to edit a problem mail.

Troubleshooting

Before asking for repairs, check the symptoms with the following table.

Refer to the dealer if the respective solutions can not solve the problems or the symptom is not described in the following table.

Symptom	Cause/solution	Reference pages
Can not access from the browser.	<ul style="list-style-type: none"> Is the Ethernet cable connected to the 10/100BASE-T port firmly? Confirm the cable is connected firmly. 	-
	<ul style="list-style-type: none"> Is the connection indicator of the 10/100BASE-T port lit? When it is not lit, connection to a LAN is not established or a network is not working correctly. Confirm that the connection indicator of the 10/100BASE-T port is lit. Refer to a system administrator if it is not lit. 	-
	<ul style="list-style-type: none"> Is the valid IP address set? Refer to a system administrator for further information. 	73
	<ul style="list-style-type: none"> Aren't you accessing the wrong IP address? Check the connection as follows: >ping "IP address of this unit" If there is a reply from this unit, the connection is normal. If not, check the settings of the IP address and the subnet mask. 	-
	<ul style="list-style-type: none"> Isn't the same IP address provided to other devices? Refer to a system administrator for further information. 	73
	<ul style="list-style-type: none"> Aren't there contradictions between the address and the network subnet to be accessed? Or isn't "Use Proxy Server" for the setting of the browser checked? When accessing this unit in the same subnet, entering the address of this unit in the "Don't Use Proxy For These Addresses" box is recommended. 	73

Symptom	Cause/solution	Reference pages
The image is not refreshed.	<ul style="list-style-type: none"> Depending on the traffic of the network, there might be difficulties in displaying images. Press the [F5] button on the keyboard to request images. 	-
Can not close the authentication window displayed when displaying the basic operation window.	<ul style="list-style-type: none"> Are the correct user name and password entered? Confirm the correct user name and password. 	87
Audio sounds fragmentary when using the viewer software.	Audio may sound fragmentary when playing images recorded with high recording rate.	-

Matsushita Electric Industrial Co., Ltd.

Osaka, Japan

<http://www.panasonic.co.jp/global/>