



Telecamera MULTIPROTOCOLLO ottica 2.8~12mm da 2,1Mp Motorizzata

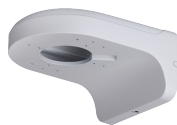
Telecamera Dome da 2,1Mp, multiprotocollo AHD/CVI/TVI/CVBS, da esterno/interno IP66 con sensore progressivo 1/2.9", risoluzione 1.080p con 25Fps, ICR meccanico, ottica 2.8~12mm motorizzata, privacy mask 16 zone, led IR portata fino a 35mt, 2/3D, WDR, 1 uscita video AHD/CVI/TVI/CVBS (controller per settaggio protocollo telecamere integrato), alimentazione 12Vdc <4.2W

PIXVIDEO

ACCESSORI (OPTIONAL)



ACM213



ACM254



ACM262

CARATTERISTICHE TECNICHE

Model	HD2V6M/4-1
Resolution	1920*1080P(30fps)
Image Sensor	1/2.9" Sony CMOS IMX323LQN
Effective Pixels	1985 (H) × 1105 (V) Approx. 2.19M pixels
S/N Ratio	≥52dB(AGC OFF)
Min. Illumination	COLOR: 0.5Lux@(F2.0, AGC ON) B&W: 0.001Lux@(F2.0, AGC ON) DSS ON
Lens	2.8-12mm Motorised lens
IR Leds	2pcs 3rd Generation IR Leds
IR Range	30-35M
Day & Night	EXT,COLOR, B&W, AUTO
White Balance	AUTO/AUTO EXT/PRESET/Manual
DNR	2D+3D NR(off/low/middle/high)
Wide Dynamic Range	WDR
Defog	OFF/ON
IRIS	AUTO, MANUAL
SENS-UP	OFF/2X/4X/6X/8X/16X/32X
PICTURE Mode	NORMAL/BLC/HLC/TURE WDR
PRIVACY MASK	ON/OFF(16 Zones)
MOTION DET	ON/OFF(4 Zones)
Mirror	ON/OFF
H-V- REV	ON/OFF
Two Motor Lens	Auto/Manual
Video Output	AHD/CVI/TVI/CVBS
HD Distance	BNC cable 75-5 transmission up to 500M
Working Temperature	-10°C ~50°C
Power Supply	DC12V
Dimension	φ119mm×85.5mm