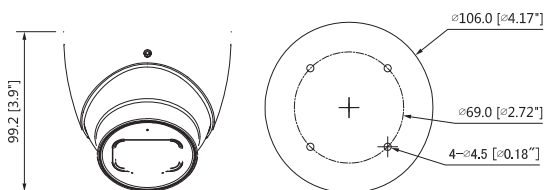




## Telecamera HDCVI STARLIGHT da 5Mp Ottica 2.8mm, IR 50mt

Telecamera Dome HDCVI STARLIGHT da 5Mp a 20Fps o 4Mp a 25fps, da esterno/interno IP67, sensore CMOS progressivo 1/2.8", ICR meccanico, ottica 2.8mm, luminosità 0.005Lux/F1.6 (0Lux IR on), led IR portata fino a 50mt, 1 ingresso audio con microfono incorporato, 2-3D, WDR, 1 uscita video HDCVI o CVBS, OSD su cavo coassiale, alimentazione 12Vdc <7W



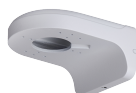
### ACCESSORI (OPTIONAL)



ACM219



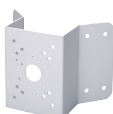
ACM221



ACM254



ACM262



ACM202

## CARATTERISTICHE TECNICHE

<b>Camera</b>	<b>HDF500S</b>		
Image Sensor	1/2.8" CMOS		
Effective Pixels	2592(H)×1944(V), 5MP		
Scanning System	Progressive		
Electronic Shutter Speed	PAL: 1/4s~1/100,000s NTSC: 1/3s~1/100,000s		
Minimum Illumination	0.005Lux/F1.6, 30IRE, 0Lux IR on		
S/N Ratio	More than 65dB		
IR Distance	Up to 50m (164feet)		
IR On/Off Control	Auto / Manual		
IR LEDs	2		
<b>Lens</b>			
Lens Type	Fixed lens / Fixed iris		
Mount Type	Board-in		
Focal Length	2.8mm		
Max Aperture	F1.6		
Angle of View	H: 79° (98°/49.5°)		
Focus Control	Auto / Manual		
Close Focus Distance	1300mm (800mm, 3000mm) 51.2" (31.5", 118")		
<b>Pan / Tilt / Rotation</b>			
Pan/Tilt/Rotation	Pan: 0° ~ 360° Tilt: 0° ~ 78° Rotation: 0° ~ 360°		
<b>Video</b>			
Resolution	5MP (2592×1944)		
Frame Rate	20fps@5MP, 25/30fps@4MP, 25/30fps@1080P		
Video Output	1-channel BNC high definition video output / CVBS video output (DIP switch)		
Day/Night	Auto (ICR) / Manual		
OSD Menu	Multi-language		
BLC Mode	BLC / HLC / WDR		
WDR	120dB		
Gain Control	AGC		
Noise Reduction	2D/3D		
White Balance	Auto / Manual		
Smart IR	Auto / Manual		
<b>DORI Distance</b>			
Note: The DORI distance is a "general proximity" of distance which makes it easy to pinpoint the right camera for your needs. The DORI distance is calculated based on sensor specification and lab test result according to EN 62676-4 which defines the criteria for Detect, Observe, Recognize and Identify respectively.			
	DORI Definition	Distance	
Detect	25px/m (8px/ft)	2.8mm:56m(184ft) 3.6mm:72m(236ft) 6mm:120m(394ft)	
	Observe	63px/m (19px/ft)	2.8mm:22m(72ft) 3.6mm:29m(95ft) 6mm:48m(157ft)
		Recognize	125px/m (38px/ft)
Identify			250px/m (76px/ft)
	<b>Interface</b>		
	Audio Interface	1ch in & Built-in Mic	
<b>Electrical</b>			
Power Supply	12V DC ±30%		
Power Consumption	Max. 7W (12V DC, IR on)		
<b>Environmental</b>			
Operating Conditions	-40°C ~ +60°C (-40°F ~ +140°F) / Less than 90% RH * Start up should be done at above -40°C (-40°F)		
Storage Conditions	-40°C ~ +60°C (-40°F ~ +140°F) / Less than 90% RH		
Ingress Protection & Vandal Resistance	IP67		
<b>Construction</b>			
Casing	Aluminium		
Dimensions	Φ106mm×99.2mm (Φ4.17"×3.9")		
Net Weight	0.48kg (1.56lb)		
Gross Weight	0.63kg (1.39lb)		