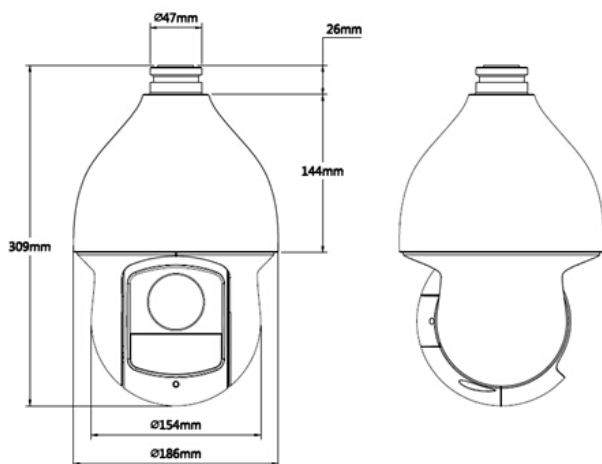




IR speed dome IP STARLIGHT, H.265, 2Mp, zoom da 25x

IR speed dome IP STARLIGHT, H.265, risoluzione 2Mp con 50Fps, da esterno/interno IP66 termoventilata con protezione scariche fino a 6KV, sensore CMOS progressivo 1/2.8", rotazione PAN 360° endless (0.1°~300°/s) / TILT -15°~90° auto flip (0.1°~200°/s), ICR meccanico, modulo zoom da 25x (4.8~120mm f1.6~4,4) + 16x digitale, luminosità 0,005Lux F1.6 (0Lux IR on), led IR portata fino a 150mt, porta LAN 10/100, 2 ingressi e 1 uscite di allarme, 1 ingresso e 1 uscita audio, 1 slot MICRO SD-Card per backup (max 128Gb), fino a 300 preset, 8 tour e 5 pattern, AutoPan, AutoScan, ULTRADNR (2D-3D), D-WDR, programmatore orario, analisi video intelligente, autotracking avanzato, privacy mask 24 aree, alimentazione 24Vac < 13~23W o PoE+, in dotazione staffa da muro e alimentatore, compatibile ONVIF.

PIXVIDEO



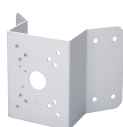
ACCESSORI (OPTIONAL)



ACM204



ACM203



ACM202

CARATTERISTICHE TECNICHE

Camera	NSP250SR
Image Sensor	1/2.8" STARVIS™ CMOS
Effective Pixels	1920(H) x 1080(V), 2 Megapixels
RAM/ROM	1024M/128M
Scanning System	Progressive
Electronic Shutter Speed	1/1s~1/300,000s
Minimum Illumination	Color: 0.005Lux@F1.6; 0Lux@F1.6 (IR on)
S/N Ratio	More than 55dB
IR Distance	Distance up to 150m (492ft)
IR On/Off Control	Auto/Manual
IR LEDs	4
Lens	
Focal Length	4.8mm~120mm
Max. Aperture	F1.6 ~ F4.4
Angle of View	H: 59.2° ~ 2.4°
Optical Zoom	25x
Focus Control	Auto/Manual
Close Focus Distance	100mm~1000mm
DORI Distance	
*Note: The DORI distance is a "general proximity" of distance which makes it easy to pinpoint the right camera for your needs.	
Detect	Observe: Recognize - Identify
1613m(5292ft)	646m(2119ft); 323m(1060ft) - 161m(528ft)
PTZ	
Pan/Tilt Range	Pan: 0° ~ 360° endless; Tilt: -15° ~ 90°, auto flip 180°
Manual Control Speed	Pan: 0.1° ~ 300° /s; Tilt: 0.1° ~ 200° /s
Preset Speed	Pan: 400° /s; Tilt: 300° /s
Presets	300
PTZ Mode	5 Pattern, 8 Tour, Auto Pan, Auto Scan
Speed Setup	Human-oriented focal length/ speed adaptation
Power up Action	Auto restore to previous PTZ and lens status after power failure
Idle Motion Protocol	Activate Preset/ Scan/ Tour/ Pattern if there is no command in the specified period
	DH-SD
Intelligence	
Auto Tracking	Support
IVS	Tripwire, Intrusion, Abandoned/Missing, Face Detection
Video	
Compression	H.265/H.264 / MJPEG
Streaming Capability	3 Streams
Resolution	1080P(1920×1080) / 1.3M(1280×960) / 720P(1280× 720) / D1(704×576/704×480) / CIF(352×288/352×240)
Frame Rate	Main stream: 1080P/720P/1.3M(1 ~ 50/60fps) Sub stream1: D1/CIF(1 ~ 25/30fps) Sub stream2: 1080P/1.3M/720P/D1/ CIF (1 ~ 25/30fps)
Bit Rate Control	CBR/VBR
Bit Rate	H.265/H.264: 448K ~ 8192Kbps, MJPEG: 5120K ~ 10240Kbps
Day/Night	Auto(ICR) / Color / B/W
Backlight Compensation	BLC / HLC / WDR (120dB)
White Balance	Auto, ATW, Indoor, Outdoor, Manual
Gain Control	Auto / Manual
Noise Reduction	Ultra DNR (2D/3D)
Motion Detection	Support
Region of Interest	Support
Electronic Image Stabilization (EIS)	Support
Defog	Support
Digital Zoom	16x
Flip	180°
Privacy Masking	Up to 24 areas
Audio	
Compression	G.711a/G.711Mu/AAC/G.722 / G.726/G.729/MPEG2-L2
Network	
Ethernet	RJ-45 (10/100Base-T)
Protocol	IPv4/IPv6, HTTP, HTTPS, SSL, TCP/IP, UDP, UPnP, ICMP, IGMP, SNMP, RTSP, RTP, SMTP, NTP, DHCP, DNS, PPPoE, DDNS, FTP, IP Filter, QoS, Bonjour, 802.1x
Interoperability	ONVIF, PSIA, CGI
Streaming Method	Unicast / Multicast
Max. User Access	20 users
Edge Storage	NAS (Network Attached Storage), Local PC for instant recording, Micro SD card 128GB
Web Viewer	IE, Chrome, Firefox, Safari
Management Software	Smart PSS, DSS
Smart Phone	IOS, Android
Interface	
Video Interface	N/A
Audio Interface	1/1
RS485	N/A
Alarm	2/1
Electrical	
Power Supply	AC24V/3A(±10%), PoE+(802.3at)
Power Consumption	13W, 23W (IR on)
Environmental	
Operating Conditions	-40°C ~ 70°C (-40°F ~ +158°F) / Less than 90% RH
Ingress Protection	IP66
Vandal Resistance	N/A
Construction	
Casing	Metal
Dimensions	Ø186.0(mm) x 309(mm)
Net Weight	3.5kg(7.72lb)
Gross Weight	6.8kg(14.99lb)